

VCP-550^{Q&As}

VMware Certified Professional - Data Center Virtualization

Pass VMware VCP-550 Exam with 100% Guarantee

Free Download Real Questions & Answers **PDF** and **VCE** file from:

<https://www.leads4pass.com/vcp-550.html>

100% Passing Guarantee
100% Money Back Assurance

Following Questions and Answers are all new published by VMware
Official Exam Center

- ⚙ **Instant Download** After Purchase
- ⚙ **100% Money Back** Guarantee
- ⚙ **365 Days** Free Update
- ⚙ **800,000+** Satisfied Customers



QUESTION 1

Which two steps can an administrator take to upgrade an existing VMFS2 datastore to VMFS5? (Choose two.)

- A. Attach the VMFS2 datastore to an ESX 3.x host and upgrade it to VMFS3
- B. Attach the VMFS2 datastore to the vSphere 5 host and upgrade it to VMFS3
- C. Upgrade the datastore from VMFS3 to VMFS5 on a vSphere 5 host
- D. Upgrade the ESX host attached to the storage to vSphere 5

Correct Answer: AC

QUESTION 2

A number of virtual machines in a vSphere 5.5 DRS cluster are connected to the same virtual switch port group. After several of these VMs are migrated to another host, an administrator notices that they have lost network connectivity. The

Events tab in vCenter Server shows this error message:

Failed to initialize ethernet0.

The vmkernel log file on the host running the affected VMs contains this message:

Can't connect device:\\port group name\\: Out of resources.

Which caused this issue?

- A. Network I/O Control was enabled.
- B. The DRS cluster containing the VMs was set to Fully Automated with the Migration Threshold set to Conservative.
- C. There were insufficient uplinks configured on the virtual switches.
- D. The virtual switch port allocation was changed from the default setting.

Correct Answer: D

QUESTION 3

A vSphere administrator observes a problem with the Virtual SAN Cluster Setting as shown: -- Exhibit -

Cluster Site A Actions ▾

Getting Started Summary Monitor **Manage** Related Objects

Settings Alarm Definitions Tags Permissions Scheduled Tasks

Services
vSphere DRS
vSphere HA
Virtual SAN
General
Disk Management
Configuration
General
Virtual SAN Licensing
VMware EVC
DRS Groups
DRS Rules
VM Overrides
Host Options
Profiles

Virtual SAN is Turned ON Edit...

Add disks to storage Automatic

Resources

Hosts	3 hosts
SSD disks in use	3 of 3 eligible
Data disks in use	3 of 3 eligible
Total capacity of VSAN datastore	39.50 GB
Free capacity of VSAN datastore	39.50 GB
Network status	⚠ Misconfiguration

-- Exhibit -Which action should the administrator take on the vmkernel portgroup on all hosts used by Virtual SAN cluster to resolve this problem?

- A. Select the Virtual SAN traffic option
- B. Increase the MTU value
- C. Change the DNS server address
- D. Increase the Port Speed

Correct Answer: A

QUESTION 4

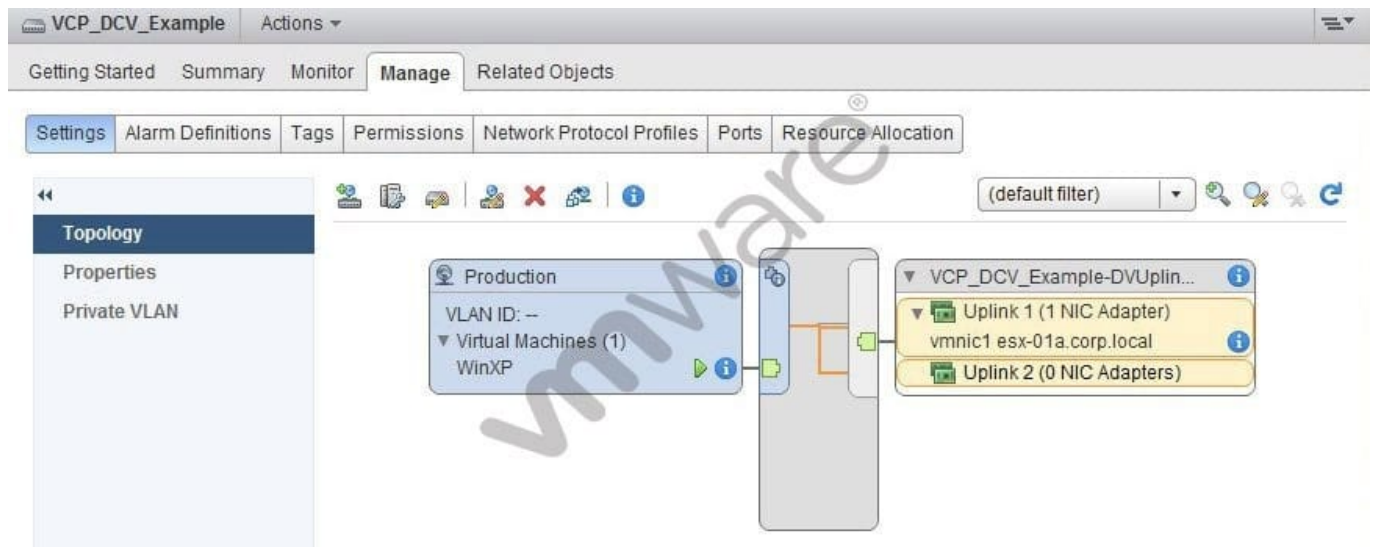
Which minor badge scores are used to calculate the Health score in vCenter Operations Manager?

- A. Time remaining, Capacity remaining, Stress
- B. Workload, Anomalies, Faults
- C. Stress, Faults, Risk
- D. Reclaimable Waste, Density

Correct Answer: B

QUESTION 5

-- Exhibit -



-- Exhibit -Users accessing the WinXP virtual machine shown in the exhibit report intermittent connectivity to the corporate network.

The configuration is as follows:

This virtual machine runs in a DRS/HA cluster of two ESXi hosts.

The VCP_DCV_Example vSphere Distributed Switch was recently created.

The WinXP virtual machine was recently migrated from another vSphere Distributed Switch.

The WinXP virtual machine was able to connect prior to migration to this switch.

No changes to the VCP_DCV_Example switch have been made since creation.

Which step should the administrator take to resolve the WinXP virtual machine's intermittent connectivity to the corporate network?

- A. Add the ESXi host to the switch where the virtual machine is currently running
- B. Disable Port Blocking on the VCP_DCV_Example switch
- C. Disable Port Blocking on the Production port group
- D. Enable Network I/O Control on the switch to better balance I/O

Correct Answer: A

QUESTION 6

An administrator removes a virtual machine from a resource pool and places it in the DRS root resource pool. Users report the performance of the application running on the virtual machine has improved. The virtual machine relocation was the only change that occurred.

What explains the change in application performance?

- A. The memory, storage, and/or CPU settings of the original resource pool restricted access to resources for the virtual machine.
- B. The configured memory, storage and/or CPU shares on the root resource pool are higher than the original resource pool.
- C. The memory, storage and/or CPU settings on the root resource pool restricted access to resources for the virtual machine
- D. The configured memory storage and/or CPU reservations on the root resource pool are higher than the original resource pool.

Correct Answer: A

QUESTION 7

What should an administrator do to configure multi-pathing using software iSCSI?

- A. Bind the VMkernel ports to the software iSCSI initiator
- B. Configure Zoning between the hosts and SAN switches
- C. Configure NIC teaming on the associated uplinks
- D. Ensure jumbo frames are enabled end-to-end

Correct Answer: A

QUESTION 8

An administrator needs to manage a virtual machine that cannot be accessed directly from an external network. Which solution should the administrator choose?

- A. Power off the virtual machine and use the vSphere Web Client to open a console to the virtual machine.
- B. Install the Client Integration Plug-in in the Web browser and open a console to the running virtual machine.
- C. Install the DCUI plug-in in the Web browser and open a console to the running virtual machine.
- D. Power off the virtual machine, install the Client Integration plug-in, and open a console to the virtual machine.

Correct Answer: B

QUESTION 9

An administrator is using esxtop to troubleshoot a storage performance issue.

Which parameter should the administrator check to monitor any storage-related vSphere overhead?

- A. DAVG
- B. KAVG
- C. GAVG
- D. CMDS

Correct Answer: B

QUESTION 10

Which action should an administrator take to increase the size of a VMFS5 datastore from 2TB to 32TB?

- A. Dynamically expand the original LUN and add a second share for the NFS datastore
- B. Dynamically expand the original LUN and increase the size of the VMFS datastore
- C. Dynamically expand the original LUN and add extents to the VMFS datastore
- D. Dynamically expand the original LUN and add extents to the NFS datastore

Correct Answer: B

QUESTION 11

A vSphere administrator needs to upgrade a single extent VMFS3 datastore to VMFS5 and expand it to 4TB in size. The storage administrator has already expanded the underlying LUN to 4TB. Which steps should the vSphere administrator take?

- A. Expand the VMFS3 datastore to 4TB and then upgrade to VMFS5
- B. Upgrade the datastore to VMFS5, manually change the partition scheme to GPT, and then expand the datastore to 4TB
- C. Upgrade the datastore to VMFS5 and then expand it to 4TB
- D. Change the block size of the VMFS3 datastore to 1MB, upgrade the datastore to VMFS5, and expand it to 4TB

Correct Answer: C

QUESTION 12

A Distributed Resource Scheduler (DRS) cluster is displaying a message that recommends the migration of virtual machines, even though the cluster is currently balanced. What is the likely reason for this?

- A. The DRS cluster does not satisfy the resource pool reservations.
- B. The DRS cluster is not configured with shared storage.
- C. The DRS cluster is in a critical state.
- D. The DRS cluster contains hosts with CPU compatibility issues.

Correct Answer: A

QUESTION 13

An administrator using vCenter Operations Manager notices an increase in resource consumption by virtual machines over a period of time. The administrator needs to understand how adding more hosts or increasing resources in existing hosts will address the growing resource requirements of the virtual machines.

Which vCenter Operations Manager feature can provide this information?

- A. Host or Cluster Capacity Optimization Report
- B. What-if Scenarios
- C. Density and Reclaimable Waste badges
- D. Virtual Machine Optimization Report

Correct Answer: B

QUESTION 14

While troubleshooting a crash event on an ESXi 5.x host, an administrator determines the log files related to the event are NOT present. Which action should the administrator take to resolve the logging issue?

- A. Increase the amount of memory committed to log storage.
- B. Increase the statistic data collection level to 4.
- C. Change the roll-up type to maximum.
- D. Create a persistent scratch location.

Correct Answer: D

QUESTION 15

A vSphere administrator needs to place an ESXi host in maintenance mode to replace a hardware component. This host is a member of a Virtual SAN cluster that uses Automatic Mode Disk Groups. Availability of virtual machines running on this host is critical. HA and DRS are enabled on the Virtual SAN Cluster. Otherwise, the Virtual SAN cluster uses default values.

Which action should the administrator take to automatically guarantee availability of virtual machines with the fastest migration time?

- A. Select Enter Maintenance Mode and accept the default values
- B. Select Enter Maintenance Mode and select Full Data Migration option
- C. Select Enter Maintenance Mode and select No Data Migration option
- D. Migrate the virtual machines to another host and datastore then select Enter Maintenance Mode

Correct Answer: A

[VCP-550 Practice Test](#)

[VCP-550 Study Guide](#)

[VCP-550 Braindumps](#)