

VCP-510^{Q&As}

VMware Certified Professional on VSphere 5

Pass VMware VCP-510 Exam with 100% Guarantee

Free Download Real Questions & Answers **PDF** and **VCE** file from:

<https://www.leads4pass.com/vcp-510.html>

100% Passing Guarantee
100% Money Back Assurance

Following Questions and Answers are all new published by VMware
Official Exam Center

-  **Instant Download** After Purchase
-  **100% Money Back** Guarantee
-  **365 Days** Free Update
-  **800,000+** Satisfied Customers



QUESTION 1

Users have reported performance issues with an application running on a Windows VM. Performance analysis shows high CPU activity on the ESXi host but low CPU activity on the Windows VM. A high value in which overview graph and counter on the virtual machine's Performance tab would confirm the results of the performance analysis?

- A. CPU (%) / Wait
- B. CPU Usage (Mhz) / Wait
- C. CPU Usage (Mhz) / Ready
- D. CPU (%) / Ready

Correct Answer: D

QUESTION 2

What happens to the total number of shares available to the children of a resource pool if a virtual machine is powered off inside the resource pool?

- A. It remains the same
- B. It decreases
- C. It increases
- D. It remains the same only if a custom share value was configured

Correct Answer: B

QUESTION 3

Assuming VLANs are not configured, which of the following is true about traffic from a virtual machine connected to a port group on a vNetwork Standard Switch with no uplinks?

- A. Virtual machines in any port group on the virtual switch can receive the traffic.
- B. The virtual switch will drop the packets if no uplink is present.
- C. Virtual machines on any virtual switch on the same ESX Server can receive the traffic.
- D. Only virtual machines in the same port group on the virtual switch can receive the traffic.

Correct Answer: A

QUESTION 4

Which three tasks can be selected from the home page of an ESXi 5.x host? (Choose three.)

- A. Browse objects managed by the host
- B. Browse NFS mounts for this host
- C. Download VMware vCenter or the vSphere client from vmware.com
- D. Shutdown or restart the host
- E. Download the PowerCLI installer

Correct Answer: ABC

QUESTION 5

What are two considerations when using resource pools in a vSphere cluster? (Choose two.)

- A. Default shares are equal for all sibling resource pools, regardless of virtual machines or child pools
- B. By default, Reservations can be exceeded
- C. vMotion must be setup prior to creating Resource Pools
- D. DRS rules cannot violate Resource Pool membership

Correct Answer: AB

QUESTION 6

What virtual machine action listed below can be performed on a template?

- A. Power on
- B. Clone
- C. Edit Settings
- D. Migrate

Correct Answer: B

QUESTION 7

An administrator has received calls about a virtual machine experiencing intermittent application issues during the evening. To troubleshoot, the administrator needs to capture the virtual machine in the state it is in during the evening hours for later analysis. Which two tasks would accomplish this requirement? (Choose two)

- A. Create a scheduled task to clone the virtual machine once per evening
- B. Create an alarm that is triggered when a loss of VMware Tools heartbeat to the virtual machine occurs.
- C. Use esxtop in batch mode and capture metrics during the evening hours.

D. Create a scheduled task to create a snapshot of the virtual machine once per evening

Correct Answer: CD

QUESTION 8

What options must be configured in the vCenter Server settings before email alerts can be sent? (Choose two.)

- A. Sender email address
- B. SNMP address information
- C. SMTP server information
- D. Email authentication information

Correct Answer: AC

QUESTION 9

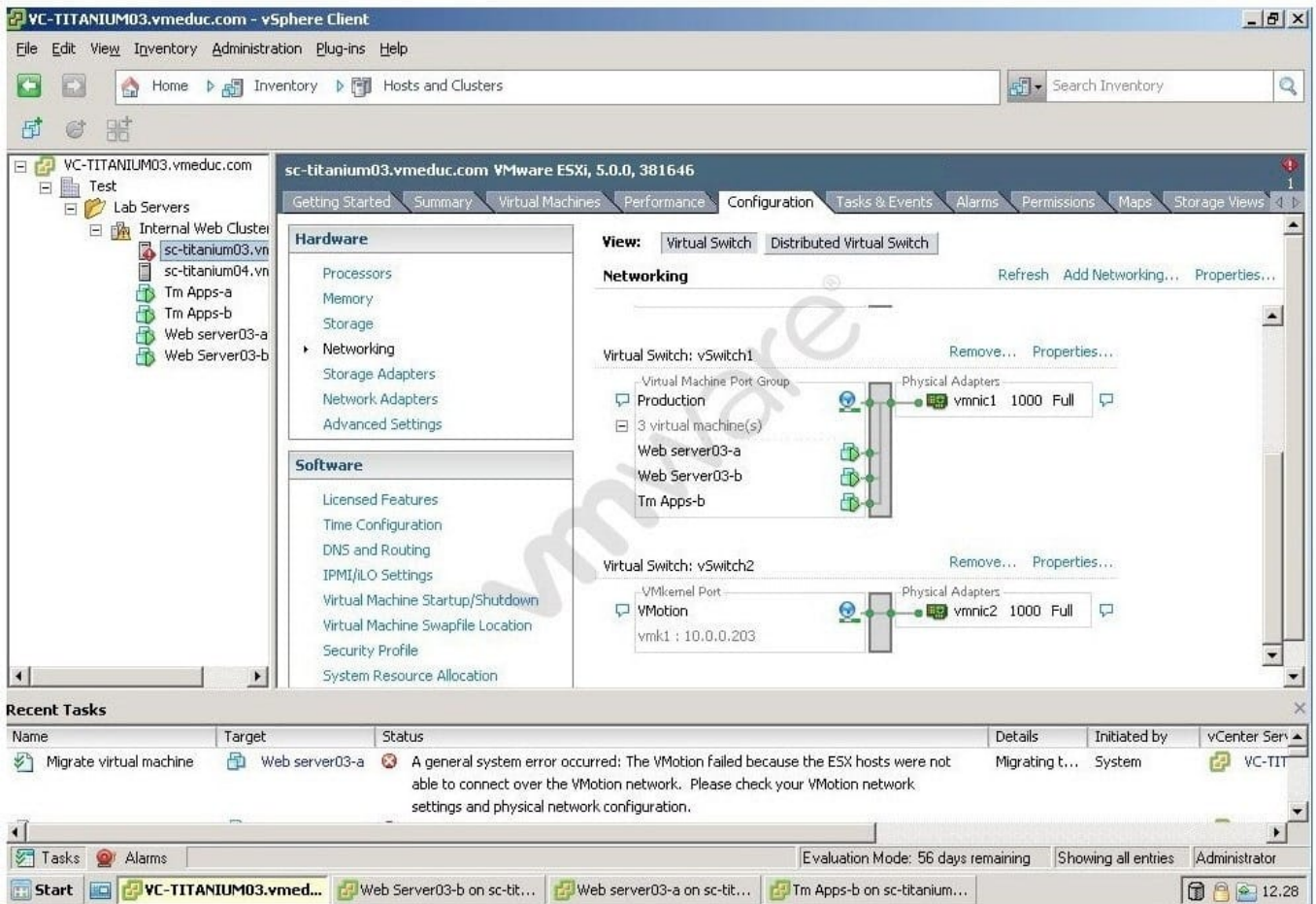
When using a hardware iSCSI initiator with an ESXi host, which two tasks are performed by VMKernel? (Choose two)

- A. Encapsulation of iSCSI PDUs TCP/IP packets
- B. Mapping requests for blocks on the virtual disk to blocks on the appropriate physical device
- C. Issuing iSCSI commands to the virtual disk
- D. Encapsulation of I/O requests into iSCSI Protocol Data Units (PDUs)

Correct Answer: BC

QUESTION 10

Click the Exhibit button. An administrator has deployed a two-node cluster with HA and DRS enabled. DRS has been configured for fully automated mode. The management and vMotion interfaces have been configured on separate physical networks. Initial DRS testing on this cluster reveals that virtual machines are not being migrated despite great disparity in resource use between the ESX hosts in the cluster. The exhibit shows the error and the network configuration for one of the hosts. Which task would successfully resolve this problem?



- A. Add a vmnic to the VMkernel port
- B. Configure the DRS Migration Threshold to Aggressive
- C. Connect the network cable to the correct physical network
- D. Migrate virtual machines manually using vMotion

Correct Answer: C

QUESTION 11

When writes from a virtual machine are delivered to a Fibre Channel storage array, which two actions are taken by the VMkernel? (Choose two)

- A. The modified I/O request is sent from the physical HBA to the device driver.
- B. The file corresponding to the virtual machine is located on the VMFS datastores.
- C. The request for blocks on the virtual disk is mapped to blocks on the appropriate physical device.
- D. The I/O request is converted from binary data form to optical data form.

Correct Answer: BC

QUESTION 12

What happens to the total number of shares available to the children of a resource pool if a virtual machine is powered off inside the resource pool?

- A. It remains the same
- B. It decreases
- C. It increases
- D. It remains the same only if a custom share value was configured

Correct Answer: B

QUESTION 13

The vSwitch or vSwitch port group policy setting that allows a virtual machine to listen to traffic other than that which is specifically destined for the given VM is:

- A. MAC Address Changes
- B. Promiscuous Mode
- C. Forged Transmits
- D. Traffic Shaping

Correct Answer: B

QUESTION 14

A request has been made to the SAN administrator to provision a new LUN. A LUN (LUN 6) is created, and the SAN administrator presents the LUN to an ESXi 5.x host, using the storage array SAN management software. The administrator looks at the Storage configuration for the ESXi host, and does not see the new LUN. Other LUNs from the same storage array are visible. Which two conditions are most likely to cause the error described? (Choose two.)

- A. The administrator has not performed a Rescan All on the ESXi host.
- B. The multipathing policy has been set to Fixed for the LUN.
- C. Zoning on the Fibre Channel switches is not configured correctly.
- D. The LUN was not presented to the correct ESXi host.

Correct Answer: AD

QUESTION 15

What is a valid traffic shaping adjustment?

- A. Burst time in seconds
- B. Burst size in KB
- C. Minimum bandwidth adjusted in Kbps
- D. Peak bandwidth adjusted in Mbps

Correct Answer: B

[VCP-510 Practice Test](#)

[VCP-510 Study Guide](#)

[VCP-510 Exam Questions](#)