

UIPATH-ARDV1^{Q&As}

UiPath Advanced RPA Developer v1.0 Exam (UiARD)

Pass UiPath UIPATH-ARDV1 Exam with 100% Guarantee

Free Download Real Questions & Answers **PDF** and **VCE** file from:

<https://www.leads4pass.com/uipath-ardv1.html>

100% Passing Guarantee
100% Money Back Assurance

Following Questions and Answers are all new published by UiPath
Official Exam Center

- ⚙ **Instant Download** After Purchase
- ⚙ **100% Money Back** Guarantee
- ⚙ **365 Days** Free Update
- ⚙ **800,000+** Satisfied Customers



QUESTION 1

A developer creates a Dispatcher process which extracts information from a Microsoft Excel file and uploads that information into an Orchestrator queue. Based on best practice, what is the recommended way to avoid creating duplicate Queue Items?

- A. Enable the Enforce unique references field of the queue Add a descriptive "Reference" in the Add Queue Item activity
- B. Add a descriptive "Reference" in the Add Queue Item activity Ensure that the "Reference" does not equal the "Reference" of the Queue Item last loaded
- C. Create an Excel file of processed Queue Items Loop through the list to check if the current Queue Item to upload has been uploaded before
- D. Disable the Enforce unique references field of the queue Enable the "Auto Retry" of the queue

Correct Answer: A

QUESTION 2

What UiPath tool ensures that your project meets high quality and reliability standards?

- A. Diagnostic Tool
- B. UI Explorer
- C. Test Manager
- D. Workflow Analyzer

Correct Answer: D

Workflow Analyzer is a static code analyzer that ensures your project meets high quality and reliability standards. A static code analyzer checks for inconsistencies without actually executing the project, as opposed to dynamic analyzers which step in during execution. Workflow Analyzer uses a set of rules to check for various inconsistencies unrelated to project execution. The rules are based on Automation Best Practices and take into consideration variable and argument naming, empty sequences or workflows, package restrictions, and so on. The analyzer does not identify errors in execution or compilation.

QUESTION 3

What is an argument?

- A. A variable
- B. An input/output parameter of the workflow
- C. A variable type

Correct Answer: B

QUESTION 4

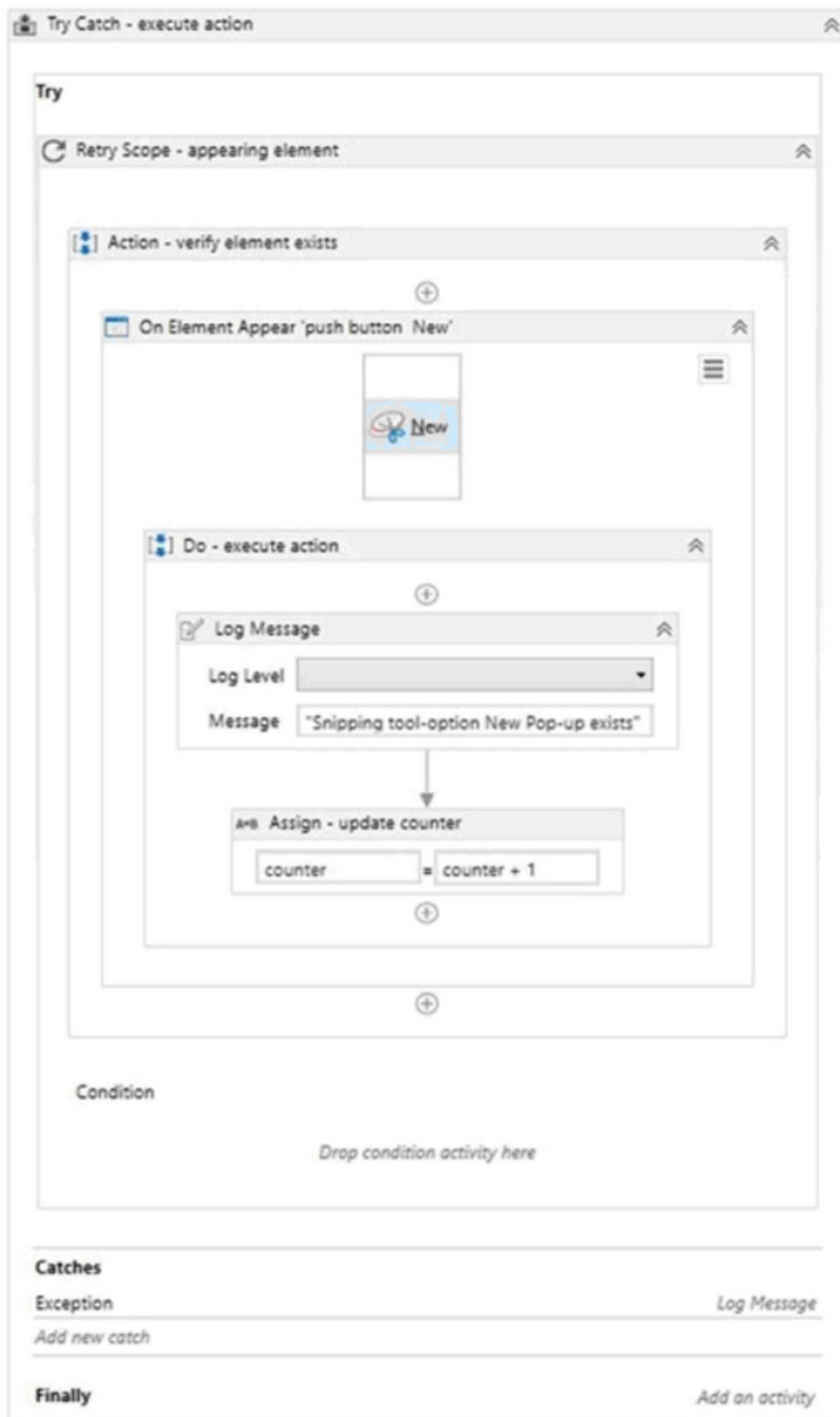
Where can you trigger an unattended robot from? Select all the options that apply

- A. The UiPath Robot icon in the system tray
- B. UiPath Studio
- C. Remotely, from Orchestrator

Correct Answer: AC

QUESTION 5

A developer created the following sequence:



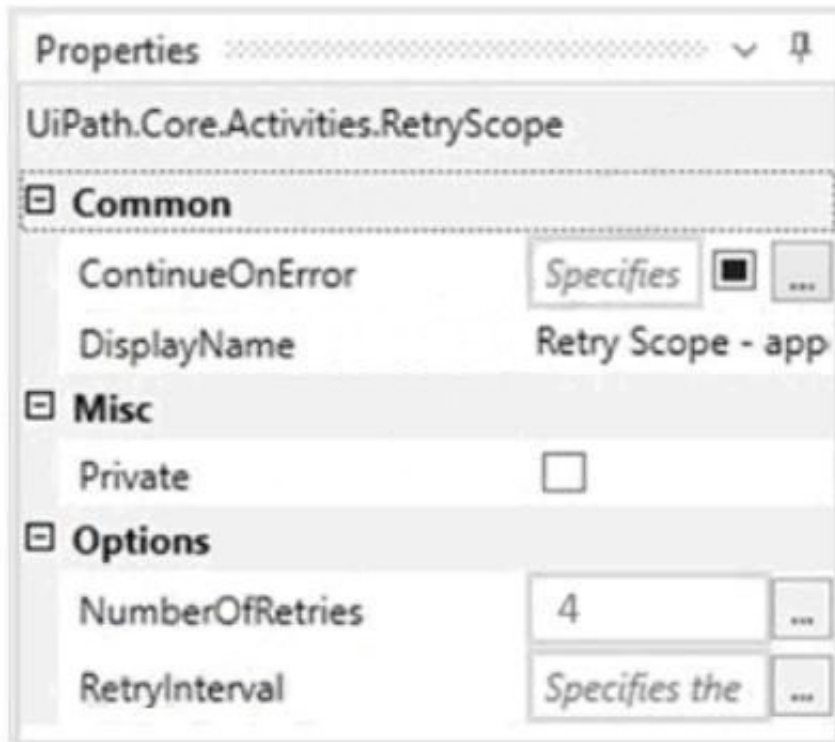
The following reflects the Catches block for the Try Catch activity:

The screenshot shows the 'Try Catch - execute action' dialog box. The 'Catches' tab is selected, displaying a table of exceptions. The first exception, 'exception', is highlighted. Below the table, there is a 'Log Message' activity configuration. The 'Log Level' is set to 'Error' and the 'Message' is 'Value of counter is: ' + counter.ToString'. The 'Finally' section is currently empty, with an 'Add an activity' button at the bottom right.

The Variable tab appears below:

Name	Variable type	Scope	Default
counter	Int32	Main	1
Create Variable			

The Properties for the Retry Scope activity are shown below:



The Properties for the On Element Appear activity are as follows:

Properties

UiPath.Core.Activities.OnUiElementAppear

Common

ContinueOnError
Specifies

DisplayName
On Element Appea

Input

Target

ClippingRegion

Element
Enter a VB ex

Selector
"<wnd app=

Timeout (milliseconds)
5000

WaitForReady
Before pe

Misc

Private

Options

RepeatForever
True

WaitActive
When thi

WaitVisible
True

Output

FoundElement
The resulted

Based on the configurations shown in the exhibits, which output is displayed in the Output panel when the target exists at runtime and it is not visible on the screen?

- A. Snipping tool-option New Pop-up exists Snipping tool-option New Pop-up exists Snipping tool-option New Pop-up exists
- B. Snipping tool-option New Pop-up exists Snipping tool-option New Pop-up exists Snipping tool-option New Pop-up exists
- C. Value of counter is: 4
- D. Snipping tool-option New Pop-up exists Snipping tool-option New Pop-up exists Snipping tool-option New Pop-up exists Value of counter is: 4

Correct Answer: D

QUESTION 6

A developer wants to automate a process in an internal ERP system. The robot needs to log in to the system using login and password. What is the correct approach to using credentials in UiPath?

- A. The developer should store login and password in the Config file.
- B. The credentials should be stored in Orchestrator and retrieved using Get Credential activity.
- C. The credentials should be stored in Orchestrator and retrieved using Get Asset activity.
- D. The developer should write login and password directly in Type Into activity.

Correct Answer: B

Gets a specified Orchestrator credential by using a provided AssetName, and returns a username and a secure password.

QUESTION 7

A developer created a process with the Robotic Enterprise (RE) Framework, uploaded the package on the Orchestrator, and created a job for it. Once these steps are performed, the job is started from the Orchestrator and begins to process transactions. After two processed transactions, the job is stopped from Orchestrator.

At which point in the workflow will this job stop?

- A. After the currently running workflow is executed because the stop command is propagated to the robot and the execution will be ended.
- B. Next time the Get Transaction Data state is executed, the stop command is detected and the execution transitions to the End Process state.
- C. Immediately, because the stop command is propagated to the robot and the execution will be ended.
- D. After the current transaction is finished, the Process Transaction state will detect the stop command and transitions

to the End Process state.

Correct Answer: B

QUESTION 8

During the development of a process, a certain label text must be retrieved. After retrieving the text, a button must be clicked and the following occurs:

1.

The loading of the label text element takes longer than 30 seconds.

2.

The loading of the button takes longer than 30 seconds.

3.

The retrieving of the data or clicking the button must be tried until successful.

Based on UiPath best practices, what must the developer use to ensure that an error is thrown if the label text or the button element does not load?

A. Use the Get Text activity with the default timeout and set the ContinueOnError property to "True". Use the Click activity in the Retry Scope activity.

B. Use the Get Text activity with the default properties in a Retry Scope activity. Use the Click activity with the default properties in a Retry Scope activity.

C. Modify the Get Text activity by increasing the timeout property. Use the Click activity to click the button with the default settings.

D. Use the Get Text activity with the default timeout and set the WaitForReady property to "None" in a Retry Scope activity. Modify the Click activity by increasing the timeout property and set the ContinueOnError property to "True".

Correct Answer: B

QUESTION 9

A developer is creating an automation project which creates a temporary password in the company\\s system for new employees and later enters it into a desktop application. To protect this sensitive information, how can the developer avoid the password from being displayed on screen when it is entered into the desktop application?

A. Ensure the password variable is of the SecureString variable type

B. Check the Private property on all activities that reference the password variable

C. Store the temporary password in an Excel file that the process can access

D. Check the Isolated property when invoking a workflow with the password variable

Correct Answer: A

QUESTION 10

A developer wants to run a VBA code in Excel using the Execute Macro activity. The developer wants to pass 3 arguments: string value, a value from a Config file and a boolean value. What is the correct setting in the MacroParameters property?

- A. ("Some Text", Config("ValueFromOrchestrator").ToString, TRUE)
- B. {"Some Text", Config("ValueFromOrchestrator").ToString, "TRUE"}
- C. {"Some Text", Config("ValueFromOrchestrator").ToString, TRUE}
- D. {"Some Text", Config(ValueFromOrchestrator).ToString, TRUE}

Correct Answer: C

To pass parameters to a VBA macro, place values into curly brackets { } in the format that is accepted in the macro (string, integer, boolean and so on). Example: Write {"Hello", 5} if the macro accepts a string variable and an integer variable.

QUESTION 11

Which of the following are considered best practices?

- A. Deleting disabled code.
- B. Removing unreferenced variables.
- C. Leaving target applications opened.

Correct Answer: AC

QUESTION 12

What type of assets can be stored in Orchestrator?

- A. Array, Datatable, Bool, String
- B. Bool, String, Integer, Credential
- C. Integer, Passowrd, GenericValue, String

Correct Answer: B

QUESTION 13

Which activity can you use if you want to loop through a collection of items?

- A. If activity
- B. Assign activity
- C. For Each activity
- D. Flow Decision activity

Correct Answer: C

QUESTION 14

A developer wants to design a process in which multiple decision points will be used to accommodate complex scenarios. In UiPath Studio, which recommended type of workflow meets this requirement?

- A. State Machine
- B. Sequence
- C. Global Exception Handler
- D. Flowchart

Correct Answer: A

Reference: <https://docs.uipath.com/studio/docs/workflow-design>

QUESTION 15

A process uses the Robotic Enterprise (RE) Framework without access to Orchestrator. Based on best practices, what is the recommended way to ensure a transaction will be retried in the event of an Application Exception while processing that transaction?

- A. Use a Retry Scope activity within the Process Transaction state
- B. Use a Try Catch activity with a Retry Scope activity in the Catch block defined for Application Exceptions
- C. Set the MaxRetryNumber in the Config.xlsx file to a number greater than 0
- D. Create a Queue in Orchestrator with the "Max # of retries" greater than 0

Correct Answer: C

Reference: <https://jignesh2882.wordpress.com/2019/04/07/uipath-certificate-question-answer-update/>