

QV_DEVELOPER_01^{Q&As}

QlikView 11 Developer Certification Examination

Pass QlikView QV_DEVELOPER_01 Exam with 100% Guarantee

Free Download Real Questions & Answers **PDF** and **VCE** file from:

https://www.leads4pass.com/qv_developer_01.html

100% Passing Guarantee
100% Money Back Assurance

Following Questions and Answers are all new published by QlikView
Official Exam Center

-  **Instant Download** After Purchase
-  **100% Money Back** Guarantee
-  **365 Days** Free Update
-  **800,000+** Satisfied Customers



QUESTION 1

A customer with a complex chart is experiencing performance issues when the organization's users view the chart without first applying several filters.

A designer needs to place a restriction on the chart so that the users are forced to make a selection before QlikView will calculate and render the chart.

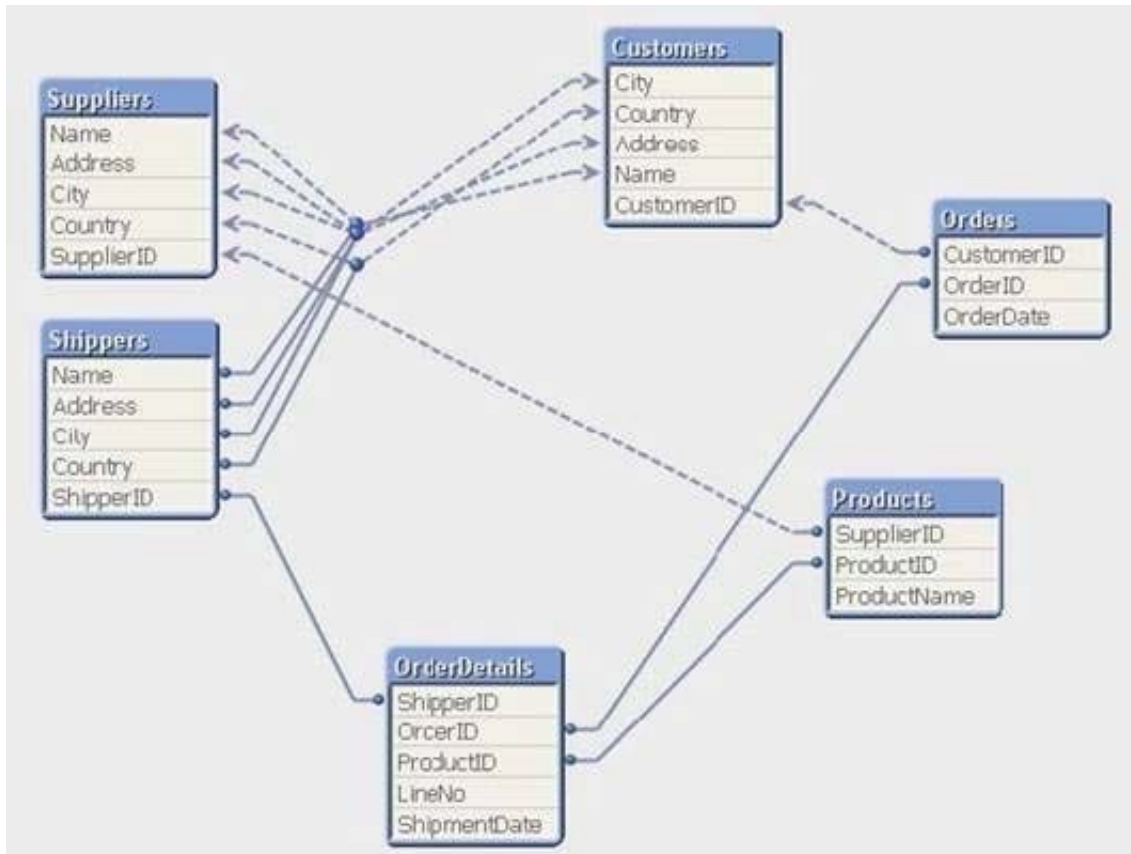
Which common object property can the designer use to accomplish this?

- A. the Help Text property on the Caption tab to enter instructions directing the user to make a selection and filter their data before performing their analysis
- B. the Auto Minimize property on the Caption tab so that the chart will be minimized and not calculate or render until the user has first made a selection and restored the chart
- C. the Calculate Condition property on the General tab to create a control condition that will keep the chart from calculating until user has filtered the data
- D. the size to Data property on the Layout tab to automatically select the filter criteria to the chart

Correct Answer: C

QUESTION 2

A customer has an Actual sales fact table aggregated at the transactional level and a Budgeted sales fact table aggregated at the monthly level. The tables share many of the same dimensional fields.



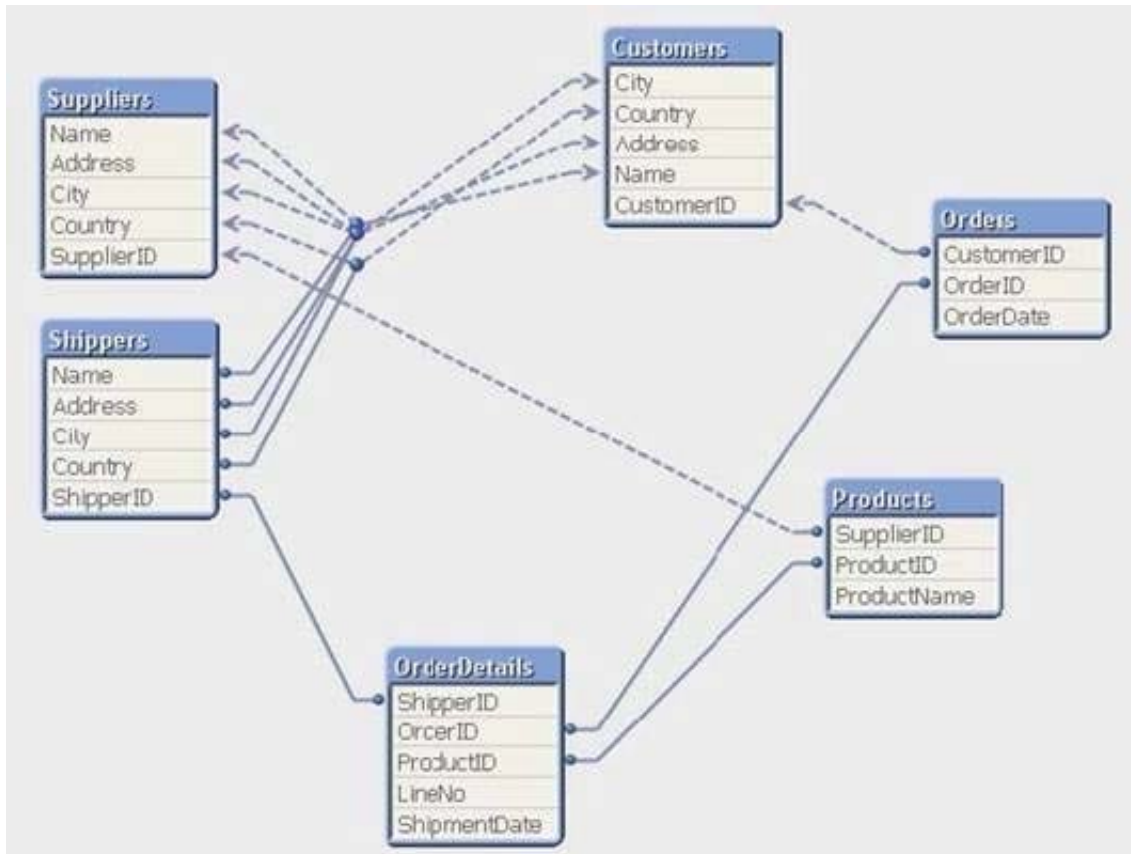
How can a developer form the data model?

- A. qualify both tables and Unqualify all shared fields
- B. left join the Budgeted sales table onto the fact table using Month as the key
- C. concatenate Load the Budgeted sales table into the Actual sales table loading shared fields as NULL
- D. create a link table containing the dimensional fields then link each fact table using a concatenated key

Correct Answer: D

QUESTION 3

Refer to the exhibit to the right.



Which technique should be used by a developer to eliminate the circular reference in the data model displayed in the exhibit?

- A. qualify all the fields in the data model ending with '\ID\'
- B. qualify the fields Name, Address, City, and Country in the shippers and suppliers tables
- C. rename the fields shipperID in the shippers table and supplierID in the suppliers table
- D. rename the fields OrderID in the OrderDetails table and supplierID in the Products table

Correct Answer: B

QUESTION 4

A customer has sales data containing a fact table, sales and dimension tables, Customer, Item, and Vendor. After loading the data, the Entity Relationship Diagram (ERD) has a synthetic table containing the fields Name and Address from the Vendor and Customer tables.

How can a developer eliminate the synthetic keys and appropriately link the data?

- A. qualify all tables
- B. alias all primary key fields

- C. left join the Customer data onto the sales table
- D. qualify all tables and then unqualify all key fields

Correct Answer: D

QUESTION 5

A global sales organization needs sales figures in both the local currencies and the corporate standard of \$USD.

How can a developer achieve this goal and enable users to only consume a single Document CAL?

- A. create a separate QVW containing values in the data model for both the local and \$USD currency amounts
- B. create a single QVW and add a table containing currency multipliers while using \$USD as a baseline currency
- C. create a separate QVW for each currency (\$USD is considered its own currency) and document chain them all together
- D. create a single QVW with duplicate tables for each currency in data islands and associate each data island to each user or group

Correct Answer: B

QUESTION 6

A customer needs an application to reload in a short time period. The source tables are log files that are appended to on a daily basis.

Which performance tuning option should a developer use?

- A. the QVD files to store the source tables
- B. the Partial Reload command with the append option
- C. the Load prefix Buffer with the incremental option
- D. the Load prefix Buffer and set the Keep Outdated QVD Buffers in the Document Properties

Correct Answer: C

QUESTION 7

What must a developer consider when loading a table after the section Access statement and before the section Applicationstatement?

- A. All field names must start with a \$ sign.

- B. All field names must be written in uppercase.
- C. The field Access must be the first field loaded.
- D. The fields Access, User, and Password must be loaded.

Correct Answer: B

QUESTION 8

A customer has 30 target values that are used to evaluate the quality of an organization's facilities. At least half the target values are changed monthly by the business users.

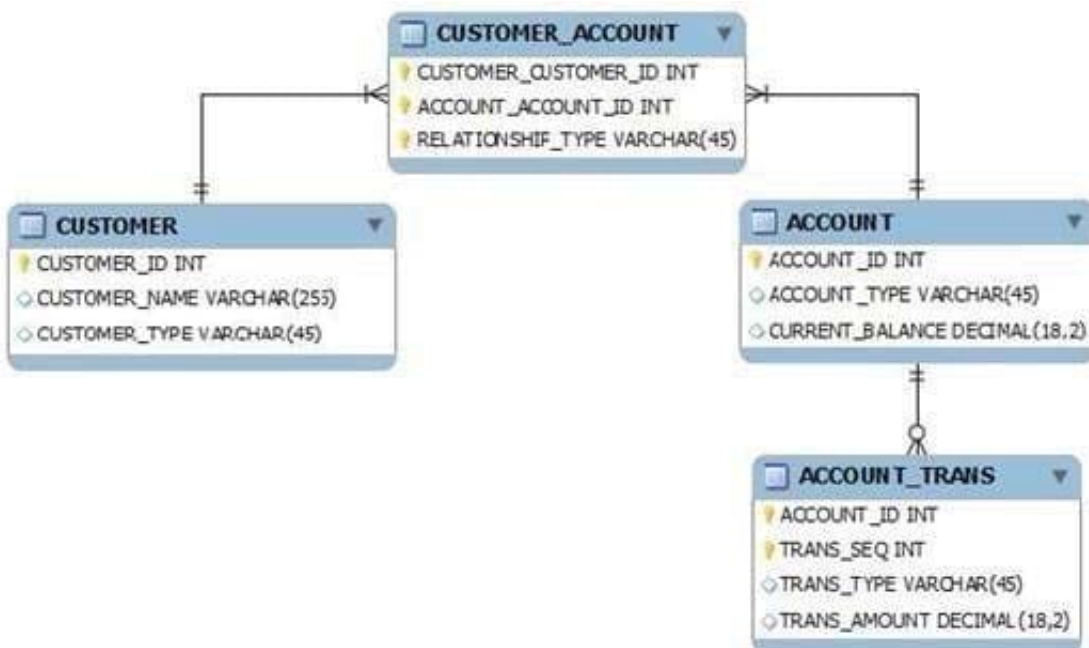
What is the most efficient way for the developer to store, access, and maintain the target values?

- A. save the target names and values in an external file, load them into a QlikView table, and use a FOR loop to assign the values to variables
- B. manually create a variable for each value in Expression Overview and maintain them in Expression Overview
- C. create a Variables tab in the load script and use 30 LET statements to assign the values to variables
- D. embed the target values into each expression in which they are required

Correct Answer: A

QUESTION 9

Refer to the exhibit to the right.



What is the cardinality of the relationship between CUSTOMER and ACCOUNT?

- A. many-to-many
- B. one-to-many
- C. one-to-none
- D. one-to-one

Correct Answer: A

QUESTION 10

An Address Book table has a Country Code field. A standard lookup table exists in Excel to translate the Country Code to a Country description.

The Country Code will be US for any Address Book record with no Country Code value.

Which technique should a developer use to ensure a Country description is loaded for all Address Book records?

- A. load the Address Book records and perform a Left Join of the Excel data to the Address Book table
- B. load the Excel data and then load the Address Book data ensuring the Country Code field has the same name in both tables
- C. load the Excel data as a Mapping table and use Applymap with a default mapping value when loading the Address Booktable
- D. load the Excel data, then load the Address Book data using an If function to default Country Code to US, and then use the Peek function to retrieve the Country description

Correct Answer: C

QUESTION 11

A customer needs to analyze Products by Product Grouping. The relationship between Product and Product Group is undefined in the original data source.

How can the Product Grouping be defined within the QlikView script?

- A. by using Input Box to enter the lookup table
- B. by using AutoGenerate to load the lookup table
- C. by generating a lookup table using the Inline wizard
- D. by loading the lookup table using an Include statement

Correct Answer: C

QUESTION 12

A customer needs to have QlikView deployed to tablet devices.

When creating the QVW application, which two actions must a developer take to meet the customer's need? (Choose two.)

- A. convert the QVW application into a .mob document on the server
- B. ensure that screen resolution is appropriate for the device
- C. convert the QVW application into a HTML5 document
- D. create a specific QVW application for each device
- E. use only sheet objects suitable for tablet devices

Correct Answer: BE

QUESTION 13

In which two places in the Chart Properties of a Gauge can expressions be entered? (Choose two.)

- A. Calculation Condition of the object
- B. Number of major/minor units for the scale
- C. show Condition of the object
- D. X and Y position of the object
- E. Auto Minimize of the object

Correct Answer: AC

QUESTION 14

A customer has a set of date values in different formats.

Some dates are in Julian date format; Some dates are text strings.

How can a developer ensure the data is loaded in a consistent format?

- A. change the default DateFormat variable assignment on the Main script tab
- B. use the Date function to format the field during load
- C. use the Alt function with different Date# functions

D. use the Lookup function with a format table

Correct Answer: C

QUESTION 15

Refer to the exhibit to the right.

SalesOrderID	SalesAmount	City	Country
1	329	Chicago	US
2	931	New York	US
4	906	L.A.	US
5	17	LA	USA
6	547	Los Angeles	US
7	526	Berlin	DE
8	474	Hong Kong	CN
9	791	HongKong	CN
10	404	London	UK
11	198	London	US
12	606	Berlin	GER
13	141	Moscow	RU
14	223	NY	US
15	383	N.Y.	US

Which two data quality issues exist within the data set displayed in the exhibit? (Choose two.)

- A. multiple spellings of the same City
- B. the City value London is associated with two different Country values
- C. the Country values and salesOrderID values do not relate properly
- D. the salesAmount field name does not contain a space
- E. inconsistent Country abbreviations
- F. duplicate key values

Correct Answer: AF

[Dumps](#)