

PL-500^{Q&As}

Microsoft Power Automate RPA Developer

Pass Microsoft PL-500 Exam with 100% Guarantee

Free Download Real Questions & Answers **PDF** and **VCE** file from:

<https://www.leads4pass.com/pl-500.html>

100% Passing Guarantee
100% Money Back Assurance

Following Questions and Answers are all new published by Microsoft
Official Exam Center

-  **Instant Download** After Purchase
-  **100% Money Back** Guarantee
-  **365 Days** Free Update
-  **800,000+** Satisfied Customers



QUESTION 1

HOTSPOT

You develop automation solutions for a company.

You need to implement actions to meet the company's requirements.

What should you do? To answer, select the appropriate options in the answer area.

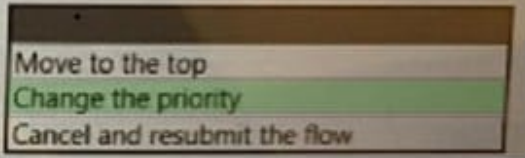
NOTE: Each correct selection is worth one point.

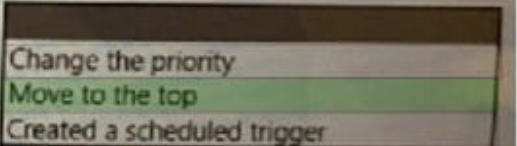
Hot Area:

Scenario	Requirement
You have a desktop flow that is currently in queue.	You must ensure that the flow is the next flow to run.
Action	
<input type="checkbox"/> Move to the top	
<input type="checkbox"/> Change the priority	
<input type="checkbox"/> Cancel and resubmit the flow	

Scenario	Requirement
You have a business-critical desktop flow that runs on a virtual machine. The virtual machine also handles multiple ad-hoc desktop flows.	You must ensure that the business-critical flow runs when it is needed.
<input type="checkbox"/> Change the priority	
<input type="checkbox"/> Move to the top	
<input type="checkbox"/> Created a scheduled trigger	

Correct Answer:

Scenario	Requirement
You have a desktop flow that is currently in queue.	You must ensure that the flow is the next flow to run.
<p style="text-align: center;">Action</p> 	

Scenario	Requirement
You have a business-critical desktop flow that runs on a virtual machine. The virtual machine also handles multiple ad-hoc desktop flows.	You must ensure that the business-critical flow runs when it is needed.
	

QUESTION 2

You plan to use a cloud flow.

The flow must be contained within a solution.

You need to add the cloud flow to a solution.

Solution: Add an existing cloud flow from a managed solution to a new unmanaged solution.

Does the solution meet the goal?

- A. Yes
- B. No

Correct Answer: B

QUESTION 3

You are creating a solution that will use a Choice field for approvals. You need to ensure that other users can use the Choice field with their Microsoft Dataverse tables. What should you use?

- A. Environment variable

B. Local choice

C. Global choice

Correct Answer: C

QUESTION 4

You are designing a user interface automation that uses a Power Automate for desktop flow.

The solution must allow you to use wildcard characters including question marks and asterisks to define a window

You need to select the window mode for the automation.

Which window mode should you use?

A. By window UI element

B. By title and/or class

C. By window instance/handle

D. By variable

Correct Answer: B

Windows title/class accept Text Value and wildcard like ?/* could be used <https://learn.microsoft.com/en-us/power-automate/desktop-flows/actions-reference/uiautomation#focuswindowbase>

QUESTION 5

You are developing a solution for a medical practice. The solution must use an artificial intelligence (AI) model to evaluate medical X-ray images and detect broken bones.

You need to create the AI model for the solution.

Solution: Use Azure machine learning to create the model.

Does the solution meet the goal?

A. Yes

B. No

Correct Answer: B

QUESTION 6

A Power Automate developer created the following script for the Member Management System desktop flow:

```
DF01 function ExecuteScript(){  
DF02     document.GetElementsByClassName("address")[0].children[0].innerText  
DF03 }
```

You need to resolve the document processing issue.

Which two components should you verify? Each correct answer presents part of the solution.

NOTE: Each correct selection is worth one point.

- A. The document processor flow is turned on.
- B. The email importer flow is set to include attachments.
- C. The document automation validator flow includes business logic.
- D. The shared mailbox is set in the email importer flow.

Correct Answer: AD

QUESTION 7

DRAG DROP

A company publishes a list of contacts each day as an HTML table on a web page. The company has a customer relationship management (CRM) application that runs on employee desktop devices.

You need to implement an RPA solution that reads data from the HTML table and create records in the CRM application.

Which four actions should you perform in sequence? To answer, move the appropriate actions from the list of actions to the answer area and arrange them in the correct order.

Select and Place:

Actions

- Launch a new web browser instance.
- Use the Get details of element on web page action to read data from the HTML table into a variable.
- Use the Run application action to start the CRM application.
- Use the Extract data from web page action to read data from the HTML table into a variable.
- Use a dynamic selector to save data from the HTML table into a variable.
- Use a For each loop to write data from the variable to the CRM application.

Answer Area

[Four empty green bars for answer input]

Correct Answer:

The image shows a screenshot of a quiz interface. At the top, under the heading "Actions", there is a list of six actions in separate boxes:

- Launch a new web browser instance.
- Use the Get details of element on web page action to read data from the HTML table into a variable.
- Use the Run application action to start the CRM application.
- Use the Extract data from web page action to read data from the HTML table into a variable.
- Use a dynamic selector to save data from the HTML table into a variable.
- Use a For each loop to write data from the variable to the CRM application.

Below this list is a blue header for the "Answer Area". Underneath, there are four boxes containing the following actions:

- Launch a new web browser instance.
- Use the Extract data from web page action to read data from the HTML table into a variable.
- Use the Run application action to start the CRM application.
- Use a For each loop to write data from the variable to the CRM application.

QUESTION 8

You need to configure the desktop action for the MaintenanceScheduler cloud flow. Which two actions should you perform? Each correct answer presents part of the solution. NOTE: Each correct selection is worth one point.

- A. Select machine settings in Power Automate for desktop.
- B. Select the Timeout property and update the duration to PT20M.
- C. Select the Timeout property and update the duration to P20M.
- D. Launch Power Automate for desktop.
- E. Navigate to Desktop flow action settings in the cloud flow.

Correct Answer: BE

<https://learn.microsoft.com/en-us/power-platform-release-plan/2020wave2/power-automate/ui-flows-execute-powershell->

exe-commands

QUESTION 9

You must create new flows within a solution and import existing flows into the solution. You need to configure the solution.

Which three actions can you perform?

Each correct answer presents a complete solution. NOTE: Each correct selection is worth one point.

- A. Create the flows within the solution to automatically create connection references.
- B. Add credential information to each connection reference.
- C. Modify each trigger and action when you add a flow into the solution to use connection references instead of connections.
- D. Select connections for connection references when you import solutions into an environment
- E. Add an existing connection reference into the solution in the same environment.

Correct Answer: ACD

QUESTION 10

You need to address the issue with the capacity planning flow. What should you do?

- A. Increase the CPU and memory of the machine on which the gateway is hosted.
- B. Create a gateway cluster.
- C. Configure the system to send alerts when the gateway fails.
- D. Create a machine group and add machines to the group to handle requests.

Correct Answer: B

According to the scenario, the capacity planning flow fails when the gateway is offline. To avoid this issue, you can create a gateway cluster that consists of two or more gateways that share the same configuration and data sources. This way, if one gateway is offline, another gateway in the cluster can handle the requests and ensure high availability for your flow.

QUESTION 11

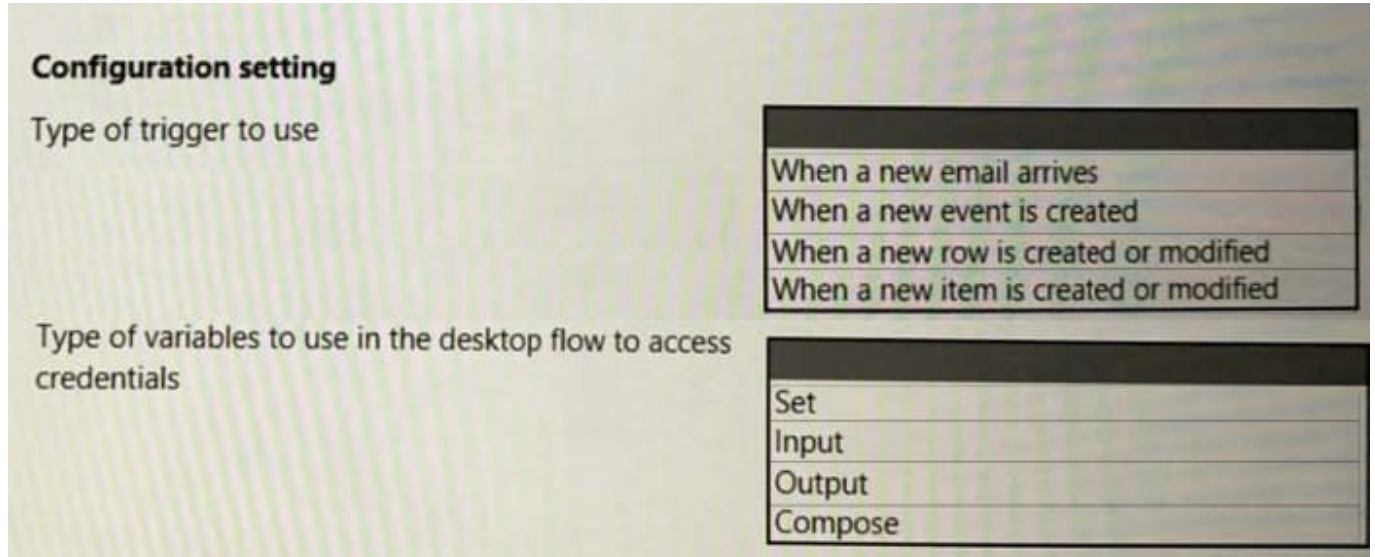
HOTSPOT

You need to configure sharing for MaintenanceScheduler.

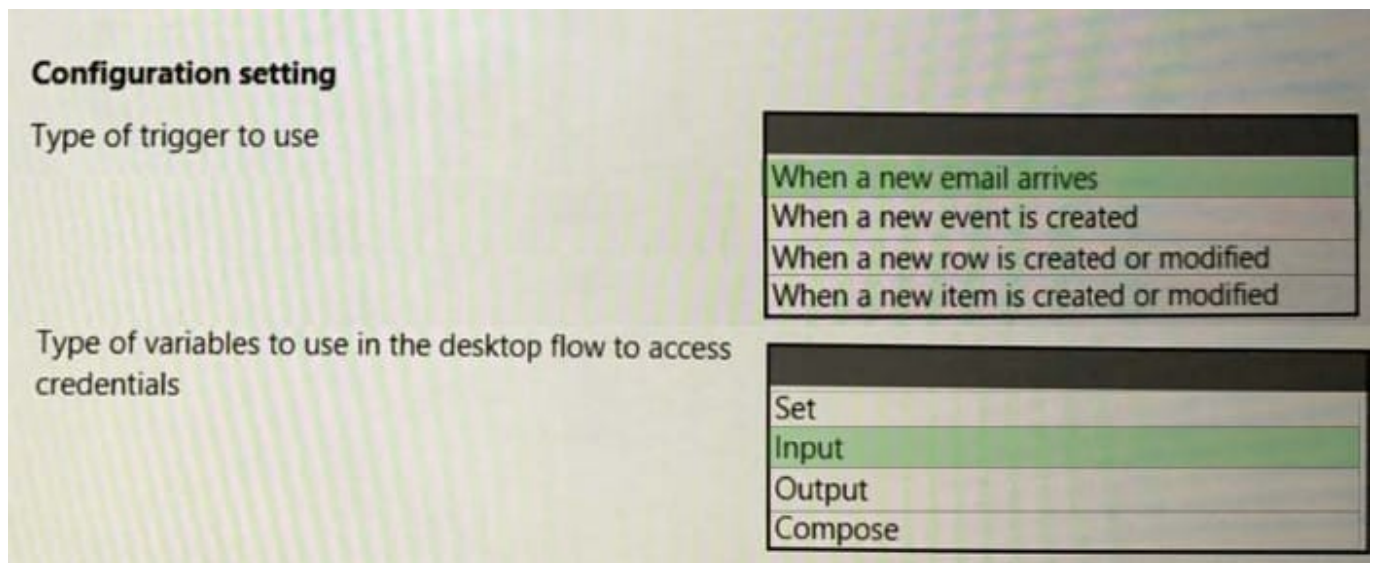
Which sharing methods should you use? To answer, select the appropriate options in the answer area.

NOTE: Each correct selection is worth one point.

Hot Area:



Correct Answer:



QUESTION 12

You are preparing to share a desktop flow. You need to share the flow with another user. Which two methods can you use? Each correct answer presents a complete solution. NOTE: Each correct selection is worth one point.

- A. Share the desktop flow by using the Microsoft Power Platform admin center.
- B. Share the desktop flow by using the Power Automate portal. Grant the user permissions to access the flow.

- C. Export a solution that contains the desktop flow and provide the solution to the user.
- D. Create a managed solution that contains the desktop flow and share the solution with another user.

Correct Answer: BC

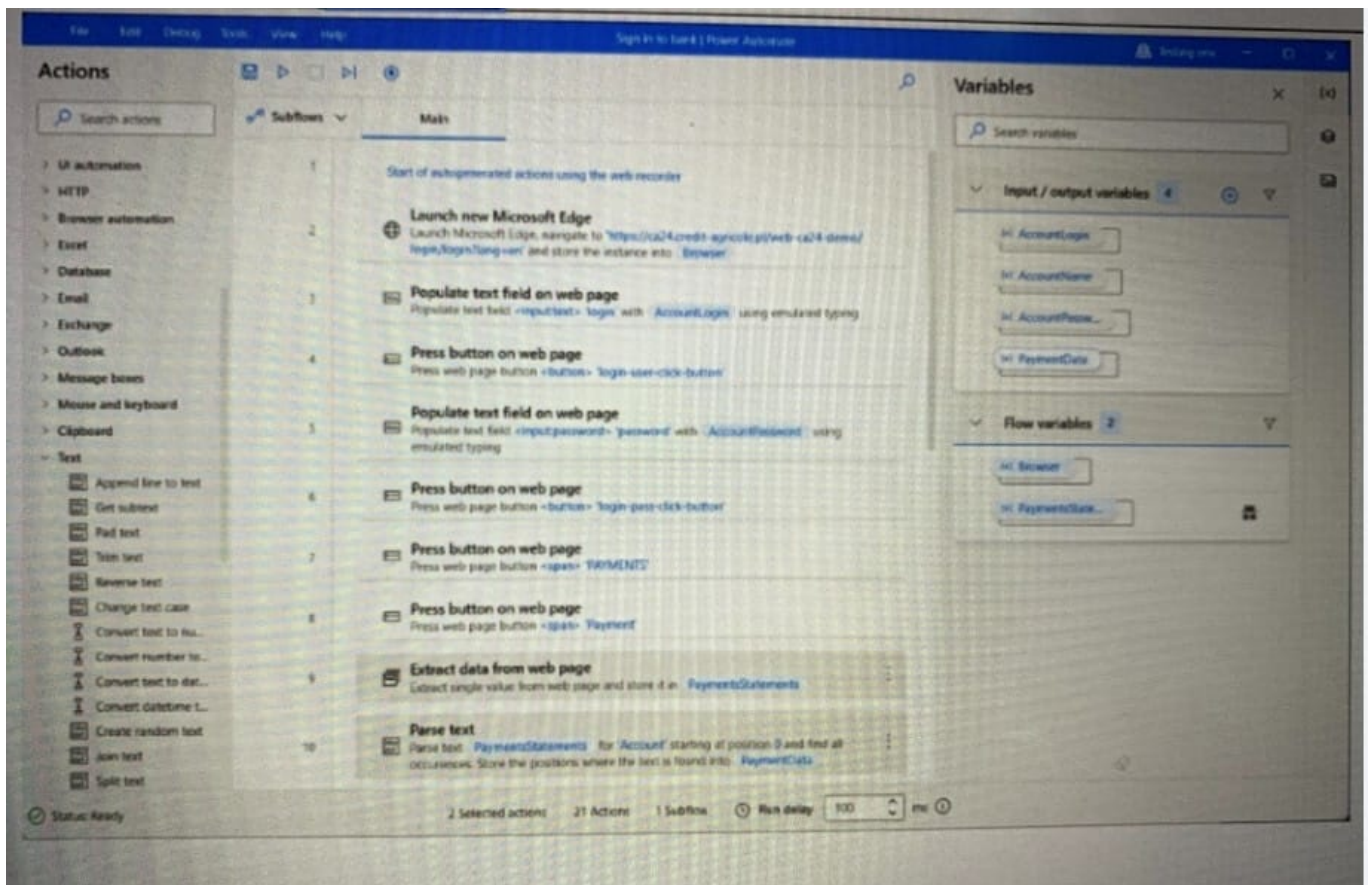
QUESTION 13

HOTSPOT

You are developing an automation solution for a bank. The solution will use a cloud flow and a desktop flow. The cloud flow retrieves sensitive information from Azure Key Vault and must pass the information to the desktop flow.

You configure a Get secret action as shown in the Get secret exhibit. (Click the Get Secret tab.)

You configure the desktop flow as shown in the Desktop flow exhibit. (Click the Desktop flow tab.)



You need to ensure that no one can preview sensitive information by viewing the cloud flow or desktop flow run details.

For each of the following statements, select Yes if the statement is true. Otherwise, select No.

NOTE: Each correct selection is worth one point.

Hot Area:

Statement	Yes	No
The Get Secret action is configured to protect sensitive data in the cloud flow.	<input type="radio"/>	<input type="radio"/>
The desktop flow is configured to protect account login and password data.	<input type="radio"/>	<input type="radio"/>
Data extracted by the desktop flow is visible to users.	<input type="radio"/>	<input type="radio"/>

Correct Answer:

Statement	Yes	No
The Get Secret action is configured to protect sensitive data in the cloud flow.	<input checked="" type="radio"/>	<input type="radio"/>
The desktop flow is configured to protect account login and password data.	<input type="radio"/>	<input checked="" type="radio"/>
Data extracted by the desktop flow is visible to users.	<input type="radio"/>	<input checked="" type="radio"/>

QUESTION 14

You create a process map by using Process advisor. You plan to create a cloud flow based on the process map. You need to develop the cloud flow. Which two Process advisor features can you use? Each correct answer presents a complete solution. NOTE: Each correct selection is worth one point.

- A. Automatically build a cloud flow based on the process map.
- B. Recommend automation opportunities based on the process map,
- C. Suggest input variables to use in the cloud flow.
- D. Suggest connectors to use in the cloud flow.

Correct Answer: BD

QUESTION 15

You develop a desktop flow. The flow performs five actions in sequence.

If an error occurs, you must restart the flow from the first action. You add the five actions to an On block error action.

You need to configure error handling.

Which two actions should you perform? Each correct answer presents part of the solution.

NOTE: Each correct selection is worth one point.

- A. Change the exception handling mode to Go to the beginning of the block.
- B. Select Continue flow run.
- C. Select Throw error.
- D. Change the exception handling mode to Go to next action.
- E. Configure an On error condition for the first action.

Correct Answer: AB

[PL-500 PDF Dumps](#)

[PL-500 Practice Test](#)

[PL-500 Braindumps](#)