

PEGAPCRSA80V1_2019^{Q&As}

Pega Certified Robotics System Architect 80V1 2019

Pass Pegasystems PEGAPCRSA80V1_2019 Exam with 100% Guarantee

Free Download Real Questions & Answers **PDF** and **VCE** file from:

https://www.leadspass.com/pegapcrsa80v1_2019.html

100% Passing Guarantee
100% Money Back Assurance

Following Questions and Answers are all new published by
Pegasystems Official Exam Center

-  **Instant Download** After Purchase
-  **100% Money Back** Guarantee
-  **365 Days** Free Update
-  **800,000+** Satisfied Customers



QUESTION 1

Your log on automation is failing and you cannot proceed because the Submit button is not enabled. After searching the HTML code, you discover that the Submit button is enabled only after the Password field experiences a key press. How do you resolve the automation issue?

- A. On the Password field, add an Enabled property and set it to True.
- B. On the Password field, add a RaiseEvent method with onkeypress.
- C. On the Submit button, add a Disabled property and set it to True.
- D. On the Submit button, add a RaiseEvent method with onkeypress.

Correct Answer: A

QUESTION 2

DRAG DROP

When interrogating a Windows control, the drag and drop Default interrogation method does not work. You decide to use the Create Control option to interrogate the control. From the Interrogation Steps list, move all of the options to the Ordered Interrogation Steps column and place them in the correct order.

Select and Place:

Interrogation Steps

On the application's designer tab, select the **Windows** tab.

Navigate to the window containing the control.

Click **List Windows**.

Confirm the control using **Highlight**.

Expand the windows to locate the control.

Select **Create Control** from the right-click menu.

Ordered Interrogation Steps

Correct Answer:

Interrogation Steps

Ordered Interrogation Steps

Navigate to the window containing the control.

On the application's designer tab, select the **Windows** tab.

Expand the windows to locate the control.

Confirm the control using **Highlight**.

Click **List Windows**.

Select **Create Control** from the right-click menu.

QUESTION 3

You are evaluating business requirements and reviewing each adapter in a project.

Prior to interrogating the application, what three actions do you perform during application discovery? (Choose three.)

- A. Identify the technology on which the application is built (web, Windows, text).
- B. Verify the match rules on all interrogated controls.
- C. Verify the interactions between all applications in the solution.
- D. Verify the number of application instances accessed by the user at the same time.
- E. Verify how the application launches outside of Pega Robot Studio.

Correct Answer: BCD

Reference: http://help.openspan.com/191/Adapters_Interrogation/interrogator_and_match_rules2.htm

QUESTION 4

A developer adds a diagnostic log component to an automation and checks the log file.

```

Info | 02:28:36.568 | EM | 25 | MTA | Playback | | CRM_E_CRMChild_Created-64125524 | Link*sessionId=0c00d382-ba28-4400-
Info | 02:28:36.569 | EM | 25 | MTA | Automation | CRM_E_CRMChild_Created | CRMAdapterPrj | Automation: CRM_E_CRMChild_Created
Info | 02:28:36.571 | EM | 25 | MTA | Automation | | | | Creating Seat Component - CompID
Warning | 02:28:36.572 | EM | 25 | MTA | Automation | | | | *****Starting Interaction*****
Info | 02:28:36.573 | EM | 25 | MTA | Playback | | CRM_E_CRMChild_Created-64125524 | Link*sessionId=0c00d382-ba28-4400-
Info | 02:28:36.574 | EM | 25 | MTA | Automation | CRM_E_CRMChild_Created | CRMAdapterPrj | Automation: CRM_E_CRMChild_Created
Warning | 02:28:36.576 | EM | 25 | MTA | ExecutionTracker | | | | ExecutionTracker EnterWait() - Dash
  
```

Based on the image, how did the developer configure the diagnostic log component settings?

A.

<input type="checkbox"/> Design	
(Name)	diagnosticsLog1
FullName on ACME_P_Sign	ACME_P_SignIn.diagnosticsLog1
Uniqueid on ACME_P_SignI	Automator-8D51549BCC7F4EE\Di
<input type="checkbox"/> Diagnostics	
Category	Automation
Mode	On
Type	Info

B.

<input type="checkbox"/> Design	
(Name)	diagnosticsLog1
FullName on CRM_E_CRMC	CRM_E_CRMChild_Created.diagn
UniqueID on CRM_E_CRMC	Automator-8D5156BC78BC6B9\D
<input type="checkbox"/> Diagnostics	
Category	Automation
Mode	On
Type	Warning

C.

<input type="checkbox"/> Design	
(Name)	diagnosticsLog1
FullName on ACME_P_Sign	ACME_P_SignIn.diagnosticsLog1
Uniqueid on ACME_P_SignI	Automator-8D51549BCC7F4EE\Di
<input type="checkbox"/> Diagnostics	
Category	*****Starting Interaction*****
Mode	On
Type	Warning

D.

<input type="checkbox"/> Design	
(Name)	diagnosticsLog1
FullName on CRM_E_CRMC	CRM_E_CRMChild_Created.diagn
UniqueID on CRM_E_CRMC	Automator-8D5156BC78BC6B9\D
<input type="checkbox"/> Diagnostics	
Category	Automation
Mode	Off
Type	Warning

- A. Option A
- B. Option B
- C. Option C
- D. Option D

Correct Answer: B

QUESTION 5

A project requirement is to run the solution in multiple environments: Development and Production. Which two items can be added to the two Project Configuration files? (Choose two.)

- A. Variable values
- B. Citrix Context properties
- C. Adapter Text MatchRules
- D. Project properties

Correct Answer: AD

QUESTION 6

You add a MessageDialog component to an automation. Based on the following image, which option shows the configuration settings that generates the message dialog?



- A.
- | | |
|--|---|
| | <ul style="list-style-type: none"> Appearance <ul style="list-style-type: none"> Buttons: YesNoCancel Caption: DefaultButton: Button2 Icon: Question Behavior <ul style="list-style-type: none"> TopMost: True Data <ul style="list-style-type: none"> Message: Design <ul style="list-style-type: none"> (Name): messageDialog2 |
|--|---|
- B.
- | | |
|--|---|
| | <ul style="list-style-type: none"> Appearance <ul style="list-style-type: none"> Buttons: YesNoCancel Caption: DefaultButton: Button2 Icon: Question Behavior <ul style="list-style-type: none"> TopMost: True Data <ul style="list-style-type: none"> Message: Design <ul style="list-style-type: none"> (Name): messageDialog2 |
|--|---|
- C.
- | | |
|--|---|
| | <ul style="list-style-type: none"> Appearance <ul style="list-style-type: none"> Buttons: YesNoCancel Caption: DefaultButton: Button2 Icon: None Behavior <ul style="list-style-type: none"> TopMost: True Data <ul style="list-style-type: none"> Message: Design <ul style="list-style-type: none"> (Name): messageDialog2 |
|--|---|
- D.
- | | |
|--|---|
| | <ul style="list-style-type: none"> Appearance <ul style="list-style-type: none"> Buttons: YesNoCancel Caption: DefaultButton: Button1 Icon: Question Behavior <ul style="list-style-type: none"> TopMost: True Data <ul style="list-style-type: none"> Message: Design <ul style="list-style-type: none"> (Name): messageDialog2 |
|--|---|

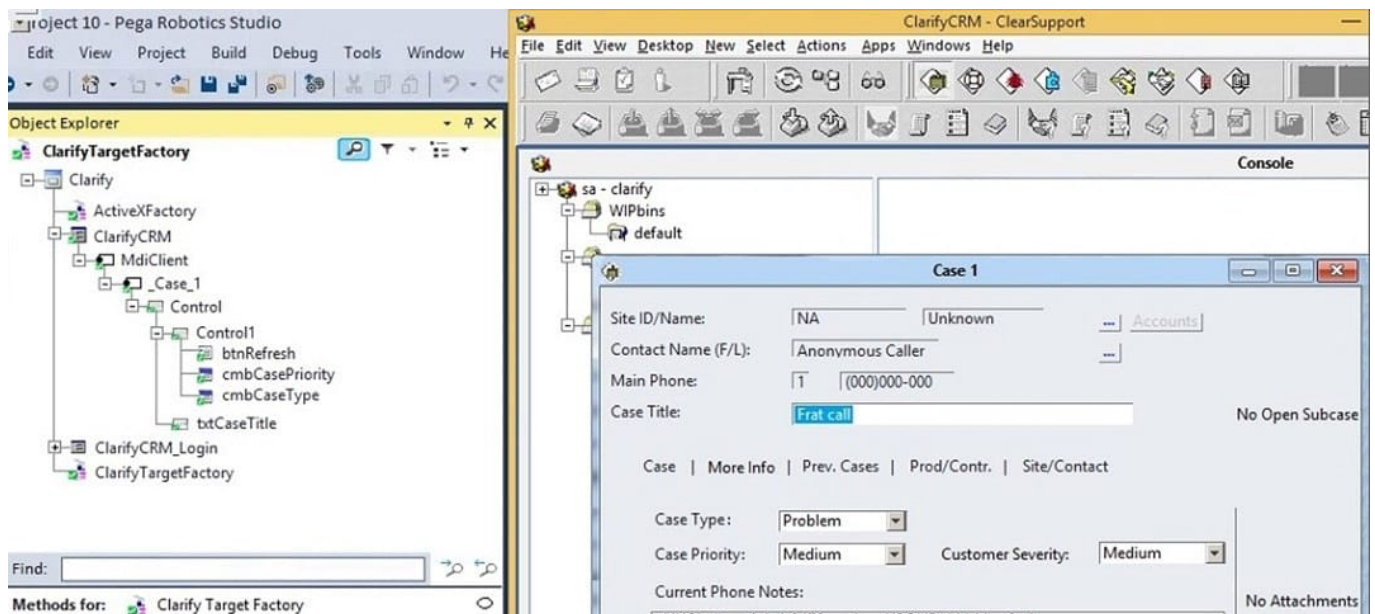
- A. Option A
- B. Option B
- C. Option C
- D. Option D

Correct Answer: D

QUESTION 7

During application discovery of a Clarify application, you determine that the user accesses more than one customer case concurrently within the application, which creates multiple windows of the same type. This requires you to enable the UseKeys property on an application\\'s object.

Based on the image that shows the application and the matched controls in the Object Explorer, which control\\'s UseKeys property must be set to True?



- A. ClarifyCRM
- B. MdiClient
- C. _Case_1
- D. Control

Correct Answer: A

Reference: <https://community.pega.com/knowledgebase/articles/how-do-i-use-keys-navigate-between-multiple-instances-object>

QUESTION 8

A service request manager, who responds to 1000 active service tickets per week, receives a ticket for new account creation. This ticket has been marked as the highest priority and contains all the necessary details for an account creation.

The manager creates an activity and assigns all the context values with appropriate values.

Which two activity methods of the account creation ticket can be used to close the ticket within priority? (Choose two.)

- A. StartNowAndWait
- B. Start
- C. StartAndWait
- D. StartNow

Correct Answer: BC

QUESTION 9

HOTSPOT

Pega Robot Studio provides five rules on how to differentiate between cloneable application objects when using key assignments in automations. The first rule states that an event creates the instance to set the context of a cloneable object. The remaining four rules state the requirements for a key assignment.

In the Answer Area, determine if each rule description requires a key assignment.

Hot Area:

Answer Area

<u>Rule Description</u>	<u>Key Assignment Required?</u>
An event from Child Context to Parent Context	<input type="checkbox"/> Requires a key assignment <input type="checkbox"/> Does not require a key assignment
An event from Parent Context to Child Context	<input type="checkbox"/> Requires a key assignment <input type="checkbox"/> Does not require a key assignment
Logic within the same context	<input type="checkbox"/> Requires a key assignment <input type="checkbox"/> Does not require a key assignment
An event from No Context to a Context	<input type="checkbox"/> Requires a key assignment <input type="checkbox"/> Does not require a key assignment

Correct Answer:

Answer Area

Rule Description

Key Assignment Required?

An event from Child Context to Parent Context

	▼
Requires a key assignment	
Does not require a key assignment	

An event from Parent Context to Child Context

	▼
Requires a key assignment	
Does not require a key assignment	

Logic within the same context

	▼
Requires a key assignment	
Does not require a key assignment	

An event from No Context to a Context

	▼
Requires a key assignment	
Does not require a key assignment	

QUESTION 10

There are two basic types of automations: events and procedures.

Which three statements describe a procedure automation? (Choose three.)

- A. It performs business logic and may interact with applications.
- B. It is triggered by a user or application action.
- C. It may contain more than one starting block.
- D. It contains an entry point and should contain at least one exit point.
- E. It should return a string value for messaging.

Correct Answer: CDE

[Latest PEGAPCRSA80V1_2019 Dumps](#)

[PEGAPCRSA80V1_2019 Practice Test](#)

[PEGAPCRSA80V1_2019 Braindumps](#)