

OMG-OCUP-200^{Q&As}

OMG-Certified UML Professional Intermediate Exam

Pass OMG OMG-OCUP-200 Exam with 100% Guarantee

Free Download Real Questions & Answers **PDF** and **VCE** file from:

<https://www.leads4pass.com/omg-ocup-200.html>

100% Passing Guarantee
100% Money Back Assurance

Following Questions and Answers are all new published by OMG
Official Exam Center

-  **Instant Download** After Purchase
-  **100% Money Back** Guarantee
-  **365 Days** Free Update
-  **800,000+** Satisfied Customers



QUESTION 1

Which statements apply to arguments of interaction occurrences? (Choose two)

- A. The arguments may be constants (literals).
- B. The arguments may refer to parameters of the enclosing interaction.
- C. An argument of an interaction occurrence must only have simple types.
- D. Arguments to interaction occurrences must always correspond to IN-parameters.
- E. Arguments to interaction occurrences only apply when the corresponding interaction is value returning.

Correct Answer: AB

QUESTION 2

What situation results from an ApplyFunctionAction?

- A. produces output values
- B. performs any set of UML actions
- C. reads objects and produces output values
- D. writes objects and produces output values
- E. reads objects, write objects, and produces output values

Correct Answer: A

QUESTION 3

What characteristic does a ConnectableElement possess?

- A. can own connectors
- B. can have associations
- C. represents the end of a communication channel
- D. can be connected to other elements by connectors

Correct Answer: D

QUESTION 4

What is the notation for gates?

- A. circular disc at the interaction frame
- B. point on the fragment frame with an optional name
- C. small arrow either into or out from the fragment frame
- D. small rectangle on the fragment frame with associated name

Correct Answer: B

QUESTION 5

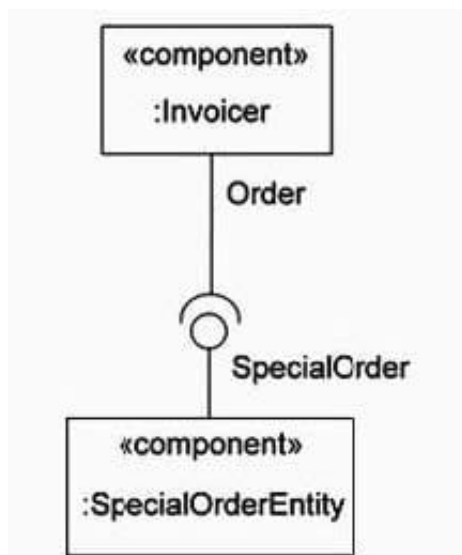
What value should insertAt be set to when adding a new value to the end of a 5-element ordered structural feature using an AddStructuralFeatureValueAction?

- A. -1
- B. 0
- C. any integer greater than 5
- D. infinity

Correct Answer: D

QUESTION 6

Which relationships would make the model in the exhibit ill-formed?



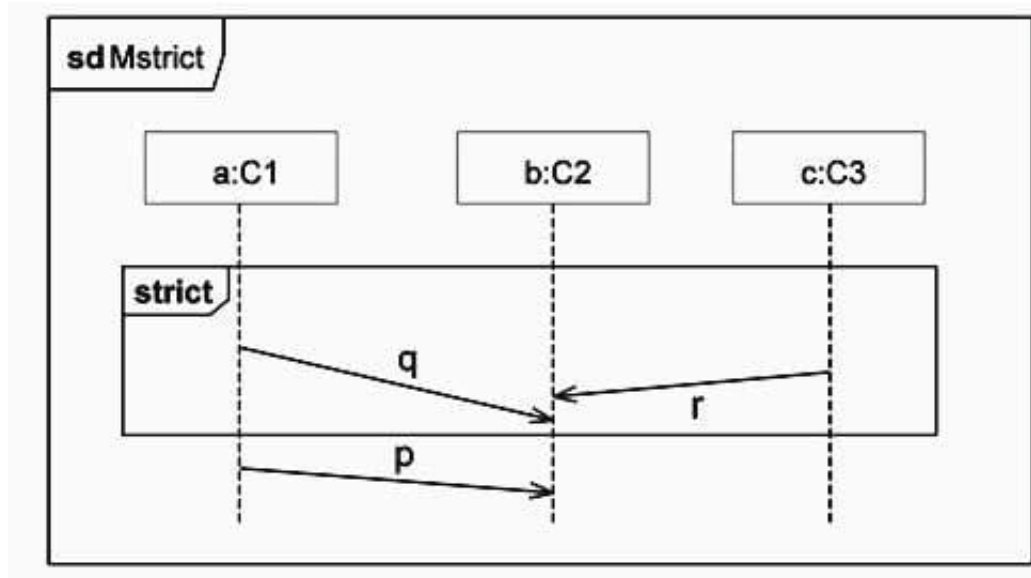
- A. SpecialOrder is a subtype of Order.
- B. Order is a subtype of SpecialOrder.
- C. SpecialOrder and Order are related to each other via a dependency.

D. SpecialOrder and Order are related to each other via an association.

Correct Answer: B

QUESTION 7

In the exhibit, what is true about Mstrict?



- A. The whole Mstrict has only one legal trace.
- B. Sending r precedes sending p in all legal traces.
- C. Sending q precedes reception of r in all legal traces.
- D. Within the strict combined fragment, sending a signal will immediately be followed by the reception of that signal.

Correct Answer: C

QUESTION 8

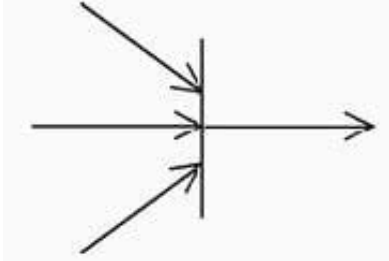
What objects receive a signal sent by a BroadcastSignalAction?

- A. all objects
- B. objects are determined by semantic variation
- C. all objects that have a reception for the signal
- D. objects that are on the same node as the actions
- E. objects that are instantiated from classes in the package of the action

Correct Answer: B

QUESTION 9

In the exhibit, how many of the arrows must provide values for the outgoing arrow to be given a value?



- A. none
- B. one
- C. two
- D. three

Correct Answer: D

QUESTION 10

When either a message m or a message q is to be sent-but not both-what kind of operator for combined fragment would be used?

- A. opt
- B. alt
- C. var
- D. par
- E. break

Correct Answer: B

QUESTION 11

What is the difference between a stereotype and a metaclass?

- A. Stereotypes can be specialized, but metaclasses cannot be specialized.
- B. Metaclasses can be specialized, but stereotypes cannot be specialized.
- C. A metaclass is a limited kind of a stereotype that can only be used in conjunction with one of the stereotypes it limits.

D. A stereotype is a limited kind of a metaclass that can be only be used in conjunction with one of the metaclasses it extends.

E. A stereotype is a specialization of a metaclass that can be used by itself, whereas a metaclass must be used with a stereotype.

Correct Answer: D

QUESTION 12

What is true when deferrable triggers of a state specify triggering events?

A. are of lower priority

B. are ignored in that state

C. will be consumed after the state is exited

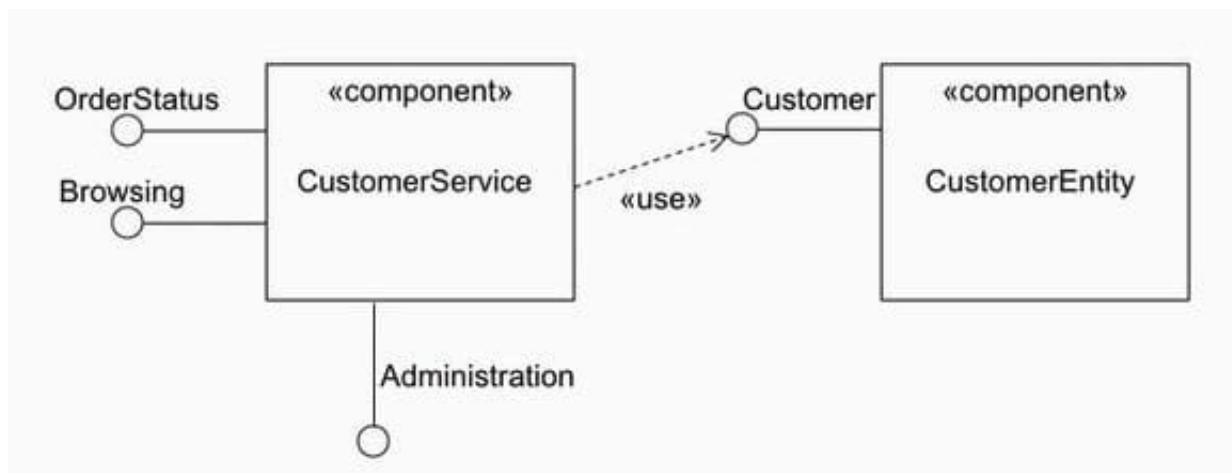
D. will be consumed when a state in which they are no longer deferred is reached

Correct Answer: D

QUESTION 13

Refer to the exhibit.

How many interfaces does the CustomerService component make visible to its clients?



A. 0

B. 1

C. 2

D. 3

E. 4

Correct Answer: D

QUESTION 14

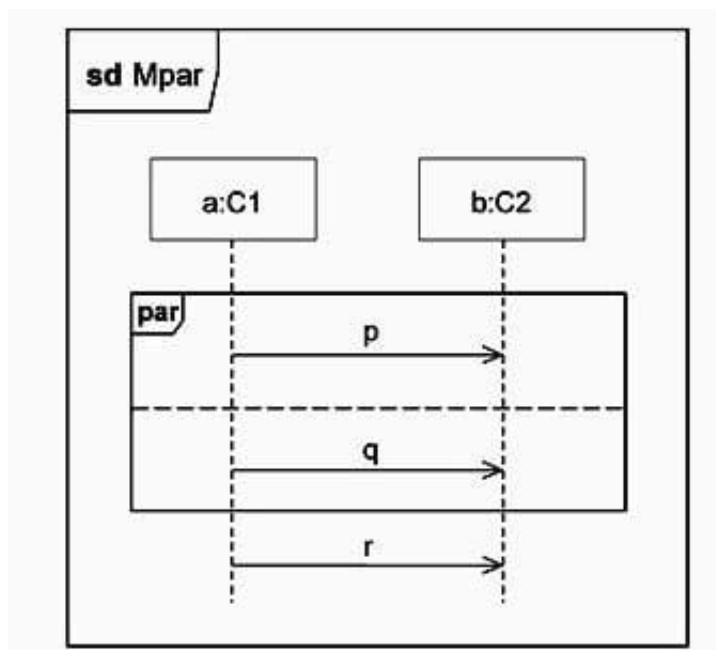
How many arrows can point from a flow final node?

- A. none
- B. one
- C. two
- D. any number

Correct Answer: A

QUESTION 15

In the exhibit, what is true about Mpar?



- A. Every trace contains all three messages.
- B. Sending p must always precede sending q.
- C. Receiving p must always precede receiving q.
- D. There are legal traces that do not contain message q.

Correct Answer: A

[OMG-OCUP-200 VCE
Dumps](#)

[OMG-OCUP-200 Study
Guide](#)

[OMG-OCUP-200
Braindumps](#)