

## NSE5<sup>Q&As</sup>

Fortinet Network Security Expert 5 Written Exam (500)

### Pass Fortinet NSE5 Exam with 100% Guarantee

Free Download Real Questions & Answers **PDF** and **VCE** file from:

<https://www.leads4pass.com/nse5.html>

100% Passing Guarantee  
100% Money Back Assurance

Following Questions and Answers are all new published by Fortinet  
Official Exam Center

-  **Instant Download** After Purchase
-  **100% Money Back** Guarantee
-  **365 Days** Free Update
-  **800,000+** Satisfied Customers



## QUESTION 1

Which of the following items is NOT a packet characteristic matched by a firewall service object?

- A. ICMP type and code
- B. TCP/UDP source and destination ports
- C. IP protocol number
- D. TCP sequence number

Correct Answer: D

---

## QUESTION 2

What are the limitations when creating a chart using the Custom Chart wizard? (Choose two.)

- A. You cannot search multiple log types (for example, \$log-traffic, \$log-webfilter).
- B. You cannot select the format of the data ?all charts are table charts by default.
- C. You can only create custom charts within the root ADOM only.
- D. You can only select from two variable charts.

Correct Answer: AD

---

## QUESTION 3

Which one of the following statements is correct about raw log messages?

- A. Logs have a header and a body section. The header will have the same layout for every log message. The body section will change layout from one type of log message to another.
- B. Logs have a header and a body section. The header and body will change layout from one type of log message to another.
- C. Logs have a header and a body section. The header and body will have the same layout for every log message.

Correct Answer: A

---

## QUESTION 4

WAN optimization is configured in Active/Passive mode. When will the remote peer accept an attempt to initiate a tunnel?

- A. The attempt will be accepted when the request comes from a known peer and there is a matching WAN optimization passive rule.

- B. The attempt will be accepted when there is a matching WAN optimization passive rule.
- C. The attempt will be accepted when the request comes from a known peer.
- D. The attempt will be accepted when a user on the remote peer accepts the connection request.

Correct Answer: A

---

**QUESTION 5**

In the example dataset, where does it state to limit the results to a specific time period? `SELECT dstip as domain, count(*) as session FROM $log WHERE $filter and dstip is not null GROUP BY dstip ORDER BY session desc LIMIT 7 OFFSET 1`

- A. count(\*)
- B. LIMIT 7
- C. There is no time period set in this query
- D. \$filter

Correct Answer: D

---

**QUESTION 6**

What output profiles can you configure for report event notifications? (Choose two.)

- A. SMS
- B. Forward to another FortiAnalyzer device
- C. Upload to a server
- D. Email

Correct Answer: CD

---

**QUESTION 7**

Which of the following products is designed to manage multiple FortiGate devices?

- A. FortiGate device
- B. FortiAnalyzer device
- C. FortiClient device
- D. FortiManager device
- E. FortiMail device

F. FortiBridge device

Correct Answer: D

### QUESTION 8

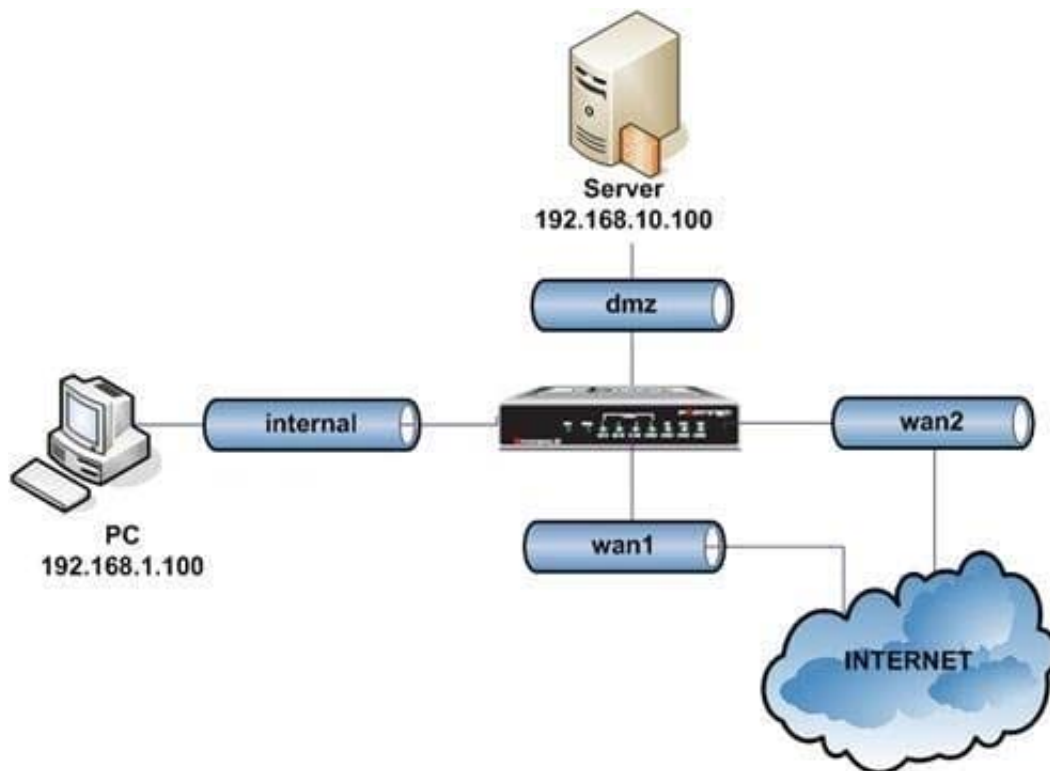
In addition to AntiVirus services, the FortiGuard Subscription Services provide IPS, Web Filtering, and \_\_\_\_\_ services.

A. antispam

Correct Answer: A

### QUESTION 9

An intermittent connectivity issue is noticed between two devices located behind the FortiGate dmz and internal interfaces. A continuous sniffer trace is run on the FortiGate unit that the administrator will convert into a .cap file for an off-line analysis with a sniffer application.



Given the high volume of global traffic on the network, which of the following CLI commands will best allow the administrator to perform this troubleshooting operation?

A. diagnose sniffer packet any

B. diagnose sniffer packet dmz "" 3

C. diagnose sniffer packet any "host 192.168.1.100 and host 192.168.10.100 " 3

D. diagnose sniffer packet any "host 192.168.1.100 and host 192.168.10.100 " 4

Correct Answer: C

---

**QUESTION 10**

Which Fortinet products and features could be considered part of a comprehensive solution to monitor and prevent the leakage of sensitive data? (Select all that apply.)

- A. Archive non-compliant outgoing e-mails using FortiMail.
- B. Restrict unofficial methods of transferring files such as P2P using Application Control lists on a FortiGate.
- C. Monitor database activity using FortiAnalyzer.
- D. Apply a DLP sensor to a firewall policy.
- E. Configure FortiClient to prevent files flagged as sensitive from being copied to a USB disk.

Correct Answer: ABD

---

**QUESTION 11**

SSL Proxy is used to decrypt the SSL-encrypted traffic. After decryption, where is the traffic buffered in preparation for content inspection?

- A. The file is buffered by the application proxy.
- B. The file is buffered by the SSL proxy.
- C. In the upload direction, the file is buffered by the SSL proxy. In the download direction, the file is buffered by the application proxy.
- D. No file buffering is needed since a stream-based scanning approach is used for SSL content inspection.

Correct Answer: A

---

**QUESTION 12**

Which of the following items is NOT a packet characteristic matched by a firewall service object?

- A. ICMP type and code
- B. TCP/UDP source and destination ports
- C. IP protocol number
- D. TCP sequence number

Correct Answer: D

---

## QUESTION 13

Which of the statements below are true regarding firewall policy disclaimers? (Select all that apply.)

- A. User must accept the disclaimer to proceed with the authentication process.
- B. The disclaimer page is customizable.
- C. The disclaimer cannot be used in combination with user authentication.
- D. The disclaimer can only be applied to wireless interfaces.

Correct Answer: AB

---

## QUESTION 14

How can DLP file filters be configured to detect Office 2010 files? (Select all that apply.)

- A. File Type. Microsoft Office(msoffice)
- B. File Type. Archive(zip)
- C. File Type. Unknown Filetype(unknown)
- D. File Name. "\*.ppt", "\*.doc", "\*.xls"
- E. File Name. "\*.pptx", "\*.docx", "\*.xlsx"

Correct Answer: BE

---

## QUESTION 15

Which of the following are valid components of the Fortinet Server Authentication Extensions (FSAE)? (Select all that apply.)

- A. Domain Local Security Agent.
- B. Collector Agent.
- C. Active Directory Agent.
- D. User Authentication Agent.
- E. Domain Controller Agent.

Correct Answer: BE