

## NSE4\_FGT-6.0<sup>Q&As</sup>

Fortinet NSE 4 - FortiOS 6.0

### Pass Fortinet NSE4\_FGT-6.0 Exam with 100% Guarantee

Free Download Real Questions & Answers **PDF** and **VCE** file from:

[https://www.leads4pass.com/nse4\\_fgt-6-0.html](https://www.leads4pass.com/nse4_fgt-6-0.html)

100% Passing Guarantee  
100% Money Back Assurance

Following Questions and Answers are all new published by Fortinet Official Exam Center

- ⚙️ **Instant Download** After Purchase
- ⚙️ **100% Money Back** Guarantee
- ⚙️ **365 Days** Free Update
- ⚙️ **800,000+** Satisfied Customers



QUESTION 1

Examine the IPS sensor configuration shown in the exhibit, and then answer the question below.

### IPS Sensor

Name:  [View IPS Signatures]

Comments:  0 / 255

#### IPS Signatures

+ Add Signatures Delete Edit IP Exemptions

Name	Exempt IPs	Severity	Target	Service	OS	Action	Packet Logging
<b>No matching entries found</b>							

#### IPS Filters

+ Add Filter Edit Filter Delete

Filter Details	Action	Packet Logging
Location:server OS:Windows	<input checked="" type="checkbox"/> Block	<input checked="" type="checkbox"/>

Apply

### Forward Traffic Logs

Refresh Download Add Filter

#	Date/Time	Source	Destination	Application Name	Result	Policy
1	10:09:03	10.200.1.254	10.200.1.200	HTTPS	✓ 1.30kB/2.65 kB	2(Web-Server-Access-IPS)
2	10:09:03	10.200.1.254	10.200.1.200	HTTPS	✓ 1.30kB/2.65 kB	2(Web-Server-Access-IPS)
3	10:09:02	10.200.1.254	10.200.1.200	HTTPS	✓ 1.30kB/2.65 kB	2(Web-Server-Access-IPS)
4	10:09:02	10.200.1.254	10.200.1.200	HTTPS	✓ 1.30kB/2.65 kB	2(Web-Server-Access-IPS)
5	10:09:01	10.200.1.254	10.200.1.200	HTTPS	✓ 1.30kB/2.65 kB	2(Web-Server-Access-IPS)
6	10:08:59	10.200.1.254	10.200.1.200	HTTPS	✓ 1.30kB/2.65 kB	2(Web-Server-Access-IPS)
7	10:08:57	10.200.1.254	10.200.1.200	HTTPS	✓ 1.30kB/2.65 kB	2(Web-Server-Access-IPS)
8	10:08:57	10.200.1.254	10.200.1.200	HTTPS	✓ 1.30kB/2.65 kB	2(Web-Server-Access-IPS)
9	10:08:57	10.200.1.254	10.200.1.200	HTTPS	✓ 1.30kB/2.65 kB	2(Web-Server-Access-IPS)
10	10:08:57	10.200.1.254	10.200.1.200	HTTPS	✓ 1.30kB/2.65 kB	2(Web-Server-Access-IPS)

An administrator has configured the WINDOS\_SERVERS IPS sensor in an attempt to determine whether the influx of HTTPS traffic is an attack attempt or not. After applying the IPS sensor, FortiGate is still not generating any IPS logs for the HTTPS traffic.

What is a possible reason for this?

- A. The IPS filter is missing the Protocol: HTTPS option.
- B. The HTTPS signatures have not been added to the sensor.
- C. A DoS policy should be used, instead of an IPS sensor.
- D. The firewall policy is not using a full SSL inspection profile.

Correct Answer: D

**QUESTION 2**

View the exhibit:

Status	Name	VLAN ID	Type	IP/Netmask
<b>Physical(12)</b>				
	port1		Physical Interface	10.200.1.1 255.255.255.0
	port1-VLAN1	1	VLAN	10.200.5.1 255.255.255.0
	port1-VLAN10	10	VLAN	10.0.10.1 255.255.255.0
	port2		Physical Interface	10.200.2.1 255.255.255.0
	port2-VLAN1	1	VLAN	10.0.5.1 255.255.255.0
	port2-VLAN10	10	VLAN	10.0.20.254 255.255.255.0
	port3		Physical Interface	10.0.1.254 255.255.255.0

Which statement about the exhibit is true? (Choose two.)

- A. Broadcast traffic received in port1-VLAN10 will not be forwarded to port2-VLAN10.
- B. port-VLAN1 is the native VLAN for the port1 physical interface.
- C. port1-VLAN10 and port2-VLAN10 can be assigned to different VDOMs.
- D. Traffic between port1-VLAN1 and port2-VLAN1 is allowed by default.

Correct Answer: AC

**QUESTION 3**

Which statements about DNS filter profiles are true? (Choose two.)

- A. They can inspect HTTP traffic.
- B. They can redirect blocked requests to a specific portal.
- C. They can block DNS requests to known botnet command and control servers.
- D. They must be applied in firewall policies with SSL inspection enabled.

Correct Answer: BC

### QUESTION 4

View the exhibit.

The exhibit shows two configuration panels for IPsec tunnels. The left panel is for TunnelB, showing a destination of 172.13.24.0/255.255.255.0, interface TunnelB, administrative distance 5, and priority 30. The right panel is for TunnelA, showing the same destination, interface TunnelA, administrative distance 10, and priority 0. Both tunnels are currently enabled.

Which of the following statements are correct? (Choose two.)

- A. This setup requires at least two firewall policies with the action set to IPsec.
- B. Dead peer detection must be disabled to support this type of IPsec setup.
- C. The TunnelB route is the primary route for reaching the remote site. The TunnelA route is used only if the TunnelB VPN is down.
- D. This is a redundant IPsec setup.

Correct Answer: CD

### QUESTION 5

View the exhibit.



```
Local-FortiGate # diagnose sys ha checksum cluster

===== FGVM010000058290 =====

is_manage_master()=1, is_root_master()=1
debugzone
global: 85 26 52 f2 f9 6e 3c c9 f5 21 1a 78 69 b6 20 bd
root: 30 51 63 1b 2d ef 77 aa f7 50 00 25 4d 42 a9 7d
all: 38 28 3d e4 24 8f 5b 10 8a 64 30 f2 34 13 c1 35

checksum
global: 85 26 52 f2 f9 6e 3c c9 f5 21 1a 78 69 b6 20 bd
root: 30 51 63 1b 2d ef 77 aa f7 50 00 25 4d 42 a9 7d
all: 38 28 3d e4 24 8f 5b 10 8a 64 30 f2 34 13 c1 35

===== FGVM010000058289 =====

is_manage_master()=0, is_root_master()=0
debugzone
global: 85 26 52 f2 f9 6e 3c c9 f5 21 1a 78 69 b6 20 bd
root: 30 51 63 1b 2d ef 77 aa f7 50 00 25 4d 8a 55 8b
all: 38 28 3d e4 24 8f 5b 10 8a 64 30 f2 34 dc 9a 43

checksum
global: 85 26 52 f2 f9 6e 3c c9 f5 21 1a 78 69 b6 20 bd
root: 30 51 63 1b 2d ef 77 aa f7 50 00 25 4d 8a 55 8b
all: 38 28 3d e4 24 8f 5b 10 8a 64 30 f2 34 dc 9a 43
```

Based on this output, which statements are correct? (Choose two.)

- A. The all VDOM is not synchronized between the primary and secondary FortiGate devices.
- B. The root VDOM is not synchronized between the primary and secondary FortiGate devices.
- C. The global configuration is synchronized between the primary and secondary FortiGate devices.
- D. The FortiGate devices have three VDOMs.

Correct Answer: BC

QUESTION 6

Examine the following web filtering log.

```
Date=2016-08-31 time=12:50:06 logid=0316013057 type=utm subtype=webfilter eventtype=ftgd_blk level=warning  
vd=root policyid=1 sessionid=149645 user= " " scrip=10.0.1.10 sroport=52919 srcintf= "port3"  
dstip=54.230.128.169 dstport=80 dstintf= "port1" proto=6 service="HTTP" hostname= "miniclip.com"  
profile= "default" action=blocked reqtype=direct url= "/" sentbyte=286 rcvbyte=0 direction=outgoing msg= "URL  
belongs to a category with warnings enabled" method=domain cat=20 catdesc="Games" crscore=30 crlevel=high
```

Which statement about the log message is true?

- A. The action for the category Games is set to block.
- B. The usage quota for the IP address 10.0.1.10 has expired
- C. The name of the applied web filter profile is default.
- D. The web site miniclip.com matches a static URL filter whose action is set to Warning.

Correct Answer: C

QUESTION 7

View the exhibit.

ID	Name	Source	Destination	Schedule	Service	Applications	URL Category	Action	NAT	Security Profiles	Log	Bytes
port 3 → port 1												
2	Video/Audio	all	all	always	ALL	Video/Audio	+	DENY		SSL certificate-inspection	All	76.74 kB
4	Social_Media	all	all	always	ALL	Social Media	Social Networking	DENY		SSL certificate-inspection	All	940.57 kB
3	ALLOW_ALL	all	all	always	ALL			ACCEPT	Custom		UTM	97.72 kB
Implicit												
0	Implicit Deny	all	all	always	ALL			DENY			Disabled	3.58 MB

Based on the configuration shown in the exhibit, what statements about application control behavior are true? (Choose two.)

- A. Access to all unknown applications will be allowed.
- B. Access to browser-based Social.Media applications will be blocked.
- C. Access to mobile social media applications will be blocked.
- D. Access to all applications in Social.Media category will be blocked.

Correct Answer: AB

QUESTION 8

What types of traffic and attacks can be blocked by a web application firewall (WAF) profile? (Choose three.)

- A. Traffic to botnetservers
- B. Traffic to inappropriate web sites
- C. Server information disclosure attacks
- D. Credit card data leaks
- E. SQL injection attacks

Correct Answer: ACE

---

## QUESTION 9

An administrator has configured central DNAT and virtual IPs. Which of the following can be selected in the firewall policy Destination field?

- A. A VIP group
- B. The mapped IP address object of the VIP object
- C. A VIP object
- D. An IP pool

Correct Answer: C

---

## QUESTION 10

Which statements about the firmware upgrade process on an active-active HA cluster are true? (Choose two.)

- A. The firmware image must be manually uploaded to each FortiGate.
- B. Only secondary FortiGate devices are rebooted.
- C. Uninterruptable upgrade is enabled by default.
- D. Traffic load balancing is temporarily disabled while upgrading the firmware.

Correct Answer: BD

---

## QUESTION 11

Which of the following are purposes of NAT traversal in IPsec? (Choose two.)

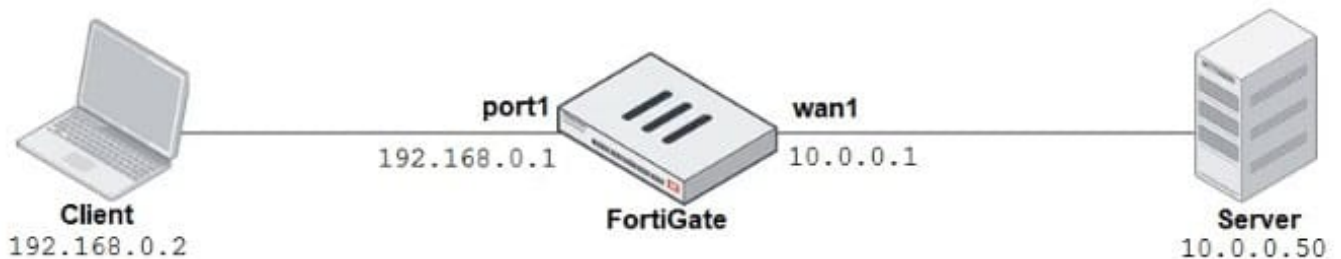
- A. To detect intermediary NAT devices in the tunnel path.
- B. To dynamically change phase 1 negotiation mode aggressive mode.
- C. To encapsulation ESP packets in UDP packets using port 4500.

D. To force a new DH exchange with each phase 2 rekey.

Correct Answer: AC

## QUESTION 12

Examine this network diagram:



Examine this explicit web proxy configuration:

### Explicit Proxy

Explicit Web Proxy

Listen on Interfaces: port1 + ✕

HTTP port: 8080

HTTPS port: Use HTTP Port Specify

FTP over HTTP:

Proxy auto-config (PAC):

Proxy FQDN: default.fqdn

Max HTTP request length: 4 KB

Max HTTP message length: 32 KB

Unknown HTTP version: Best Effort Reject

Realm: default

Default Firewall Policy Action: Accept Deny

What filter can be used in the command diagnose sniffer packet to capture the traffic between the client and the explicit web proxy?

A. `host 10.0.0.50 and port 8080\`

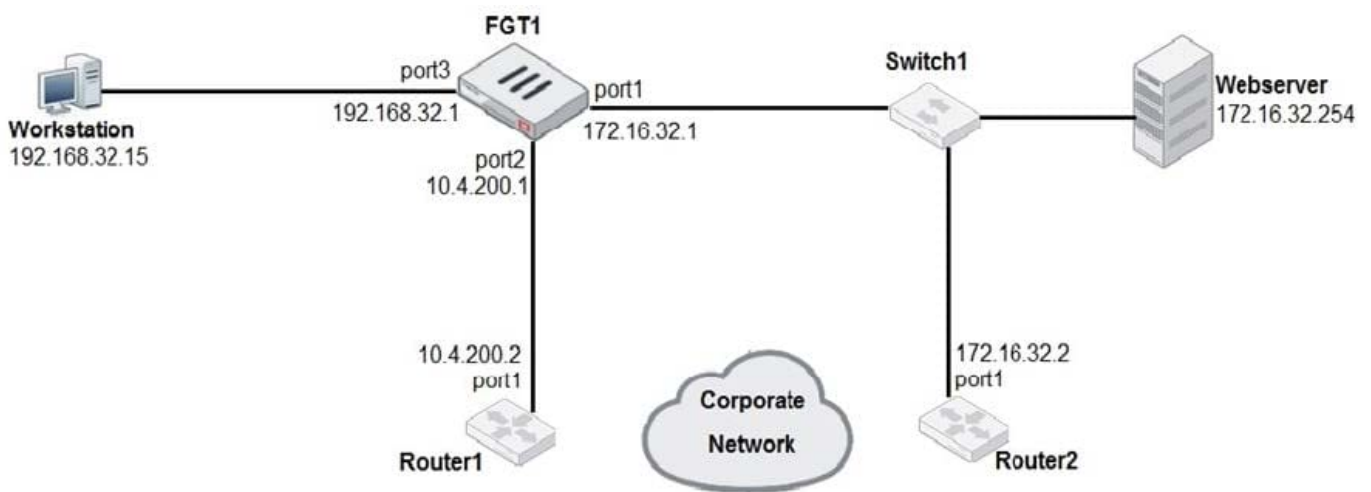


- B. `host 10.0.0.50 and port 80\`
- C. `host 192.168.0.2 and port 8080\`
- D. `host 192.168.0.1 and port 80\`

Correct Answer: C

**QUESTION 13**

Examine the network diagram shown in the exhibit, then answer the following question:



Which one of the following routes is the best candidate route for FGT1 to route traffic from the Workstation to the Web server?

- A. 172.16.0.0/16 [50/0] via 10.4.200.2, port2 [5/0]
- B. 0.0.0.0/0 [20/0] via 10.4.200.2, port2
- C. 10.4.200.0/30 is directly connected, port2
- D. 172.16.32.0/24 is directly connected, port1

Correct Answer: D

**QUESTION 14**

An administrator has configured a route-based IPsec VPN between two FortiGate devices. Which statement about this IPsec VPN configuration is true?

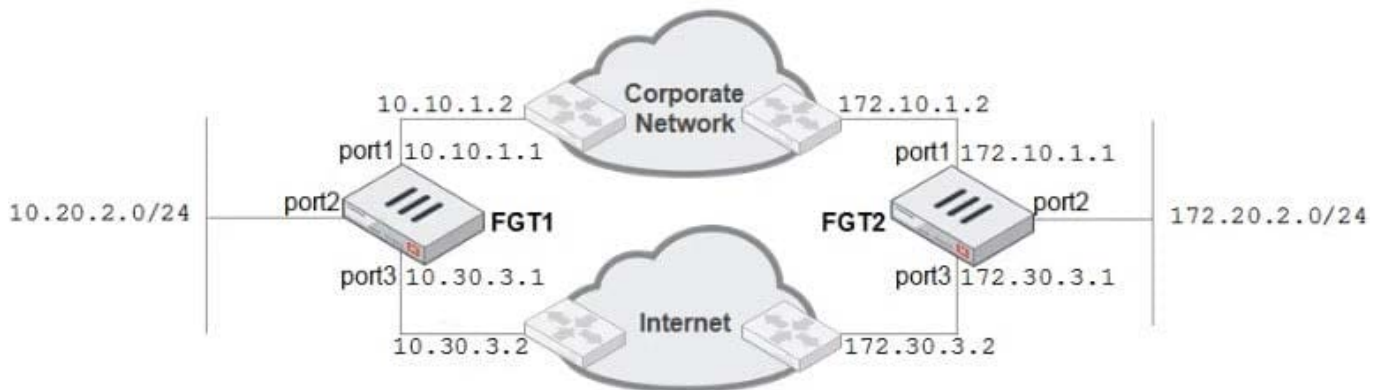
- A. A phase 2 configuration is not required.
- B. This VPN cannot be used as part of a hub-and-spoke topology.
- C. A virtual IPsec interface is automatically created after the phase 1 configuration is completed.

D. The IPsec firewall policies must be placed at the top of the list.

Correct Answer: C

## QUESTION 15

Examine the network diagram shown in the exhibit, and then answer the following question:



A firewall administrator must configure equal cost multipath (ECMP) routing on FGT1 to ensure both port1 and port3 links are used at the same time for all traffic destined for 172.20.2.0/24. Which of the following static routes will satisfy this requirement on FGT1? (Choose two.)

- A. 172.20.2.0/24 (1/0) via 10.10.1.2, port1 [0/0]
- B. 172.20.2.0/24 (25/0) via 10.30.3.2, port3 [5/0]
- C. 172.20.2.0/24 (25/0) via 10.10.1.2, port1 [5/0]
- D. 172.20.2.0/24 (1/150) via 10.30.3.2, port3 [10/0]

Correct Answer: BC

[Latest NSE4\\_FGT-6.0 Dumps](#)

[NSE4\\_FGT-6.0 VCE Dumps](#)

[NSE4\\_FGT-6.0 Practice Test](#)