

NS0-175^{Q&As}

Cisco and NetApp FlexPod Design Specialist

Pass NetApp NS0-175 Exam with 100% Guarantee

Free Download Real Questions & Answers **PDF** and **VCE** file from:

<https://www.leads4pass.com/ns0-175.html>

100% Passing Guarantee
100% Money Back Assurance

Following Questions and Answers are all new published by NetApp
Official Exam Center

-  **Instant Download** After Purchase
-  **100% Money Back** Guarantee
-  **365 Days** Free Update
-  **800,000+** Satisfied Customers



QUESTION 1

You are working with a customer on a new FlexPod solution. The customer advises you that they want a single point of contact for support issues.

In this scenario, which two support solutions should you offer the customer? (Choose two.)

- A. Cisco SmartNet Total Care
- B. NetApp SupportEdge Expert
- C. NetApp Solution Support for FlexPod
- D. Cisco Solution Support

Correct Answer: AC

QUESTION 2

Your environment currently has a 12-node NetApp cluster serving iSCSI. You need to add at least four more nodes to serve FC to your environment.

In this scenario, what should you do?

- A. You can safely add up to 4 more storage controllers in the current cluster
- B. You can safely add up to 6 more storage controllers in the current cluster
- C. You must create a new cluster with the new storage controllers
- D. You can safely add up to 12 more storage controllers in the current cluster

Correct Answer: A

QUESTION 3

You are sizing a FlexPod Datacenter solution for multitenancy use.

What are two important platform scaling considerations in this scenario? (Choose two.)

- A. maximum NetApp ONTAP cluster limits
- B. maximum NetApp ONTAP storage VM limits
- C. maximum Cisco vPC interfaces between Fabric Interconnects
- D. maximum Cisco L1, L2 interfaces between Fabric Interconnects

Correct Answer: AD

QUESTION 4

A customer wants to replace their Cisco UCS 6248UP with the current Cisco UCS 6454. They are currently using six 16 Gbit uplinks per Fabric Interconnect for FC and do not want to change the speed and number of ports used.

In this scenario, what is the minimum number of unified ports that must be configured for FC for a comparable configuration?

- A. 8
- B. 6
- C. 16
- D. 12

Correct Answer: A

Reference: https://www.cisco.com/c/en/us/td/docs/unified_computing/ucs/ucs-manager/GUI-User-Guides/Network-Mgmt/4-0/b_UCSM_Network_Mgmt_Guide_4_0/b_UCSM_Network_Mgmt_Guide_4_0_chapter_0100.html

QUESTION 5

A customer with a FlexPod solution wants to expand their NetApp ONTAP 9.7 switchless cluster. The new hardware must support expansion slots. In addition, they will also upgrade to a 100 Gbps-capable cluster interconnect switch for future growth.

In this scenario, which two additional components will satisfy the requirement? (Choose two.)

- A. Nexus 3232C
- B. Nexus N3132Q-V
- C. NetApp FAS2720
- D. NetApp AFF A400

Correct Answer: AB

Reference: https://docs.netapp.com/us-en/flexpod/pdfs/sidebar/FlexPod_Datacenter_Technical_Specifications.pdf (26)

QUESTION 6

A customer has decided to deploy Red Hat OpenShift on a FlexPod solution, based in a published Cisco Validated Design. The customer intends to use the NetApp Trident to attach persistent storage to the customer's containers from the customer's NetApp AFF controllers.

In this scenario, which two storage protocols are supported? (Choose two.)

- A. iSCSI
- B. FC
- C. NFS
- D. SMB

Correct Answer: BC

QUESTION 7

Click the Exhibit button. Exhibit 1.

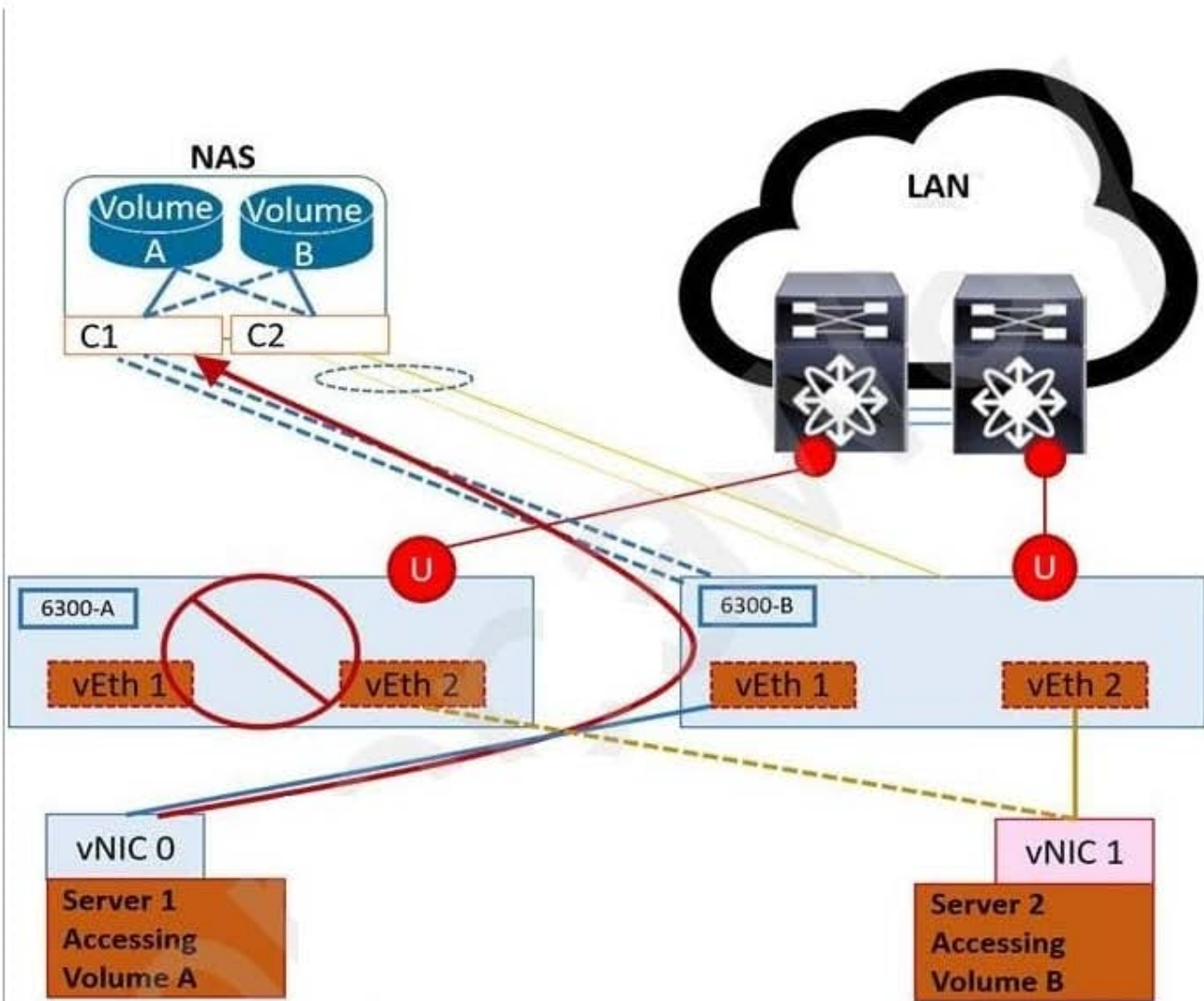


Figure 1

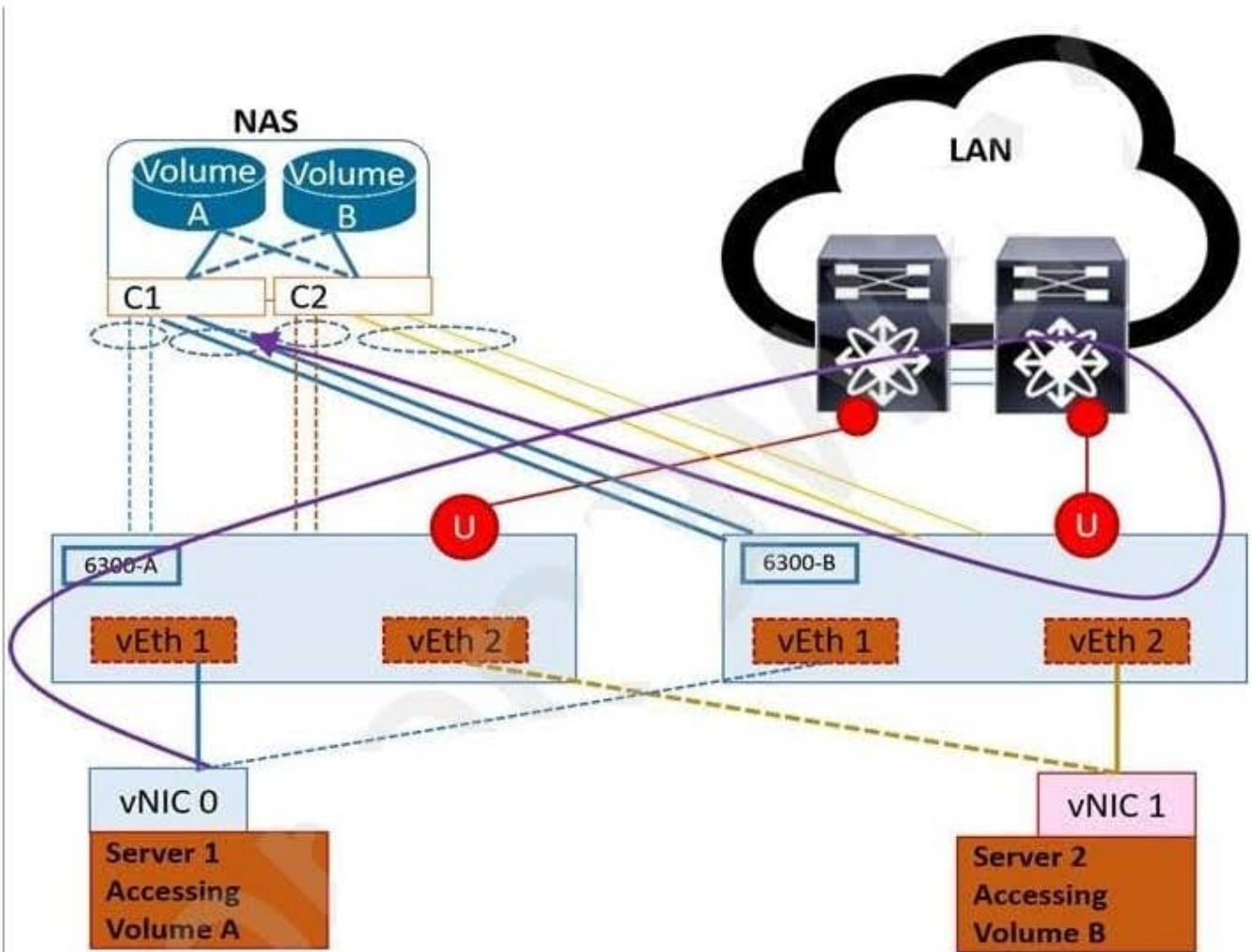
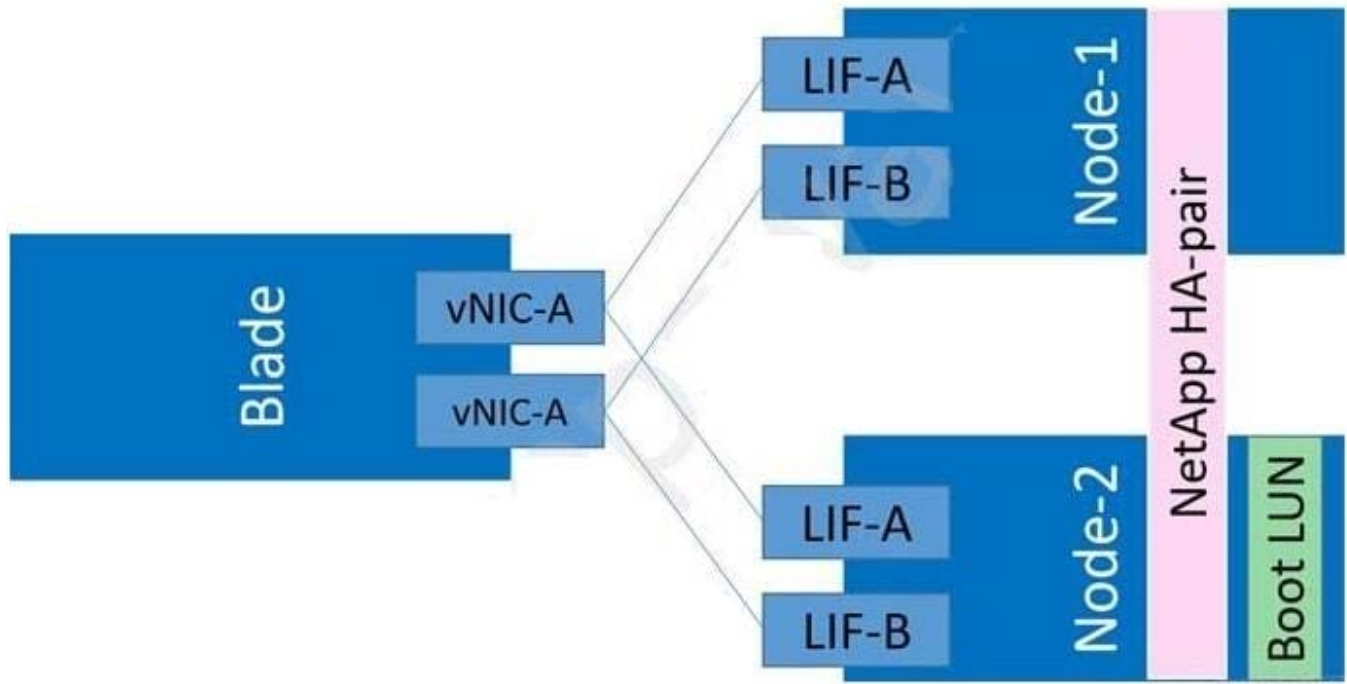


Figure 2

Exhibit 2.



Referring to the exhibit, UCS Fabric Interconnect 6300-A fails as shown in Figure 1. Due to the storage LIF configuration, after UCS Fabric Interconnect 6300-A is restored, traffic flows as shown in Figure 2.

To enable this capability, on which two UCS port types should storage VLANs be accessible? (Choose two.)

- A. uplink ports
- B. appliance ports
- C. fabric ports
- D. switch ports

Correct Answer: AB

Reference: https://www.cisco.com/c/en/us/td/docs/unified_computing/ucs/ucs-manager/GUI-User-Guides/Getting-Started/3-2/b_UCSM_Getting_Started_Guide_3_2/b_UCSM_Getting_Started_Guide_3_2_chapter_010.pdf (8)

QUESTION 8

You are sizing a FlexPod Virtual Desktop solution for a customer with 500 virtual desktops in a shared Remote Desktop Services (RDS) topology.

In this scenario, which Cisco best practice should you use?

- A. You should avoid placing more than 20 users per physical host
- B. You should avoid over-committing physical CPU resources for virtual machines

- C. You should avoid changing the virtual host disk queue depth
- D. You should avoid multiple vCPUs per individual virtual machine

Correct Answer: B

Reference: https://www.vmware.com/content/dam/digitalmarketing/vmware/en/pdf/techpaper/View51_on_FlexPod_Design_Guide.pdf

QUESTION 9

What are the 1U, rack mountable, Fabric Extenders (FEX) used for in a FlexPod environment?

- A. to allow for the UCS C-Series to be connected to the Fabric Interconnects
- B. to allow for the UCS S-Series to be connected to the Fabric Interconnects
- C. to allow for extra UCS Blade Chassis to use the Fabric Interconnects
- D. to allow for the UCS B-Series to be connected to the Fabric Interconnects

Correct Answer: A

QUESTION 10

You have a customer that wants to deploy a new data center environment and take advantage of server portability. You propose that they use Cisco UCS servers to take advantage of stateless computing operations.

In this scenario, which Cisco UCS feature would help the customer achieve their objective?

- A. SEL logs
- B. MAC address pools
- C. Service Profiles
- D. VSANs

Correct Answer: C

Reference: <https://community.cisco.com/t5/data-center-documents/what-is-stateless-computing-in-ucs/tap/3116244>

[NS0-175 PDF Dumps](#)

[NS0-175 Practice Test](#)

[NS0-175 Exam Questions](#)