

MD-100^{Q&As}

Windows Client

Pass Microsoft MD-100 Exam with 100% Guarantee

Free Download Real Questions & Answers **PDF** and **VCE** file from:

<https://www.leads4pass.com/md-100.html>

100% Passing Guarantee
100% Money Back Assurance

Following Questions and Answers are all new published by Microsoft
Official Exam Center

- ⚙️ **Instant Download** After Purchase
- ⚙️ **100% Money Back** Guarantee
- ⚙️ **365 Days** Free Update
- ⚙️ **800,000+** Satisfied Customers



QUESTION 1

Note: This question is part of a series of questions that present the same scenario. Each question in the series contains a unique solution that might meet the stated goals. Some question sets might have more than one correct solution, while

others might not have a correct solution.

After you answer a question in this section, you will NOT be able to return to it. As a result, these questions will not appear in the review screen.

You manage devices that run Windows 10.

Ten sales users will travel to a location that has limited bandwidth that is expensive. The sales users will be at the location for three weeks.

You need to prevent all Windows updates from downloading for the duration of the trip. The solution must not prevent access to email and the Internet.

Solution: From Network and Internet in the Settings app, you set the network connections as metered connections.

Does this meet the goal?

- A. Yes
- B. No

Correct Answer: B

<https://www.makeuseof.com/tag/5-ways-temporarily-turn-off-windows-update-windows-10/>

QUESTION 2

Your network contains an Active Directory domain named Contoso.com.

A user named User1 has a personal computer named Computer that runs Windows 10 Pro. User1 has a VPN connection to the corporate network. You need to ensure that when User1 connects to the corporate network.

You need to ensure that when user1 connects to the VPN, network traffic uses a proxy located in the corporate network. The solution must ensure that User1 can access the internet when disconnected from the VPN.

What should you do?

- A. From the Settings app, modify the properties of the VPN connection.
- B. From the Setting app, modify proxy settings for the local computer.
- C. From Control panel, modify the properties of the VPN connection
- D. From Control Panel, modify the Windows Defender Firewall settings

Correct Answer: A

QUESTION 3

HOTSPOT

You have 50 Windows 8.1 devices.

You plan to migrate the devices to Windows 10.

You need to install the following tools on a local computer:

Deployment Image Servicing and Management (DISM)

Windows System Image Manager (Windows SIM)

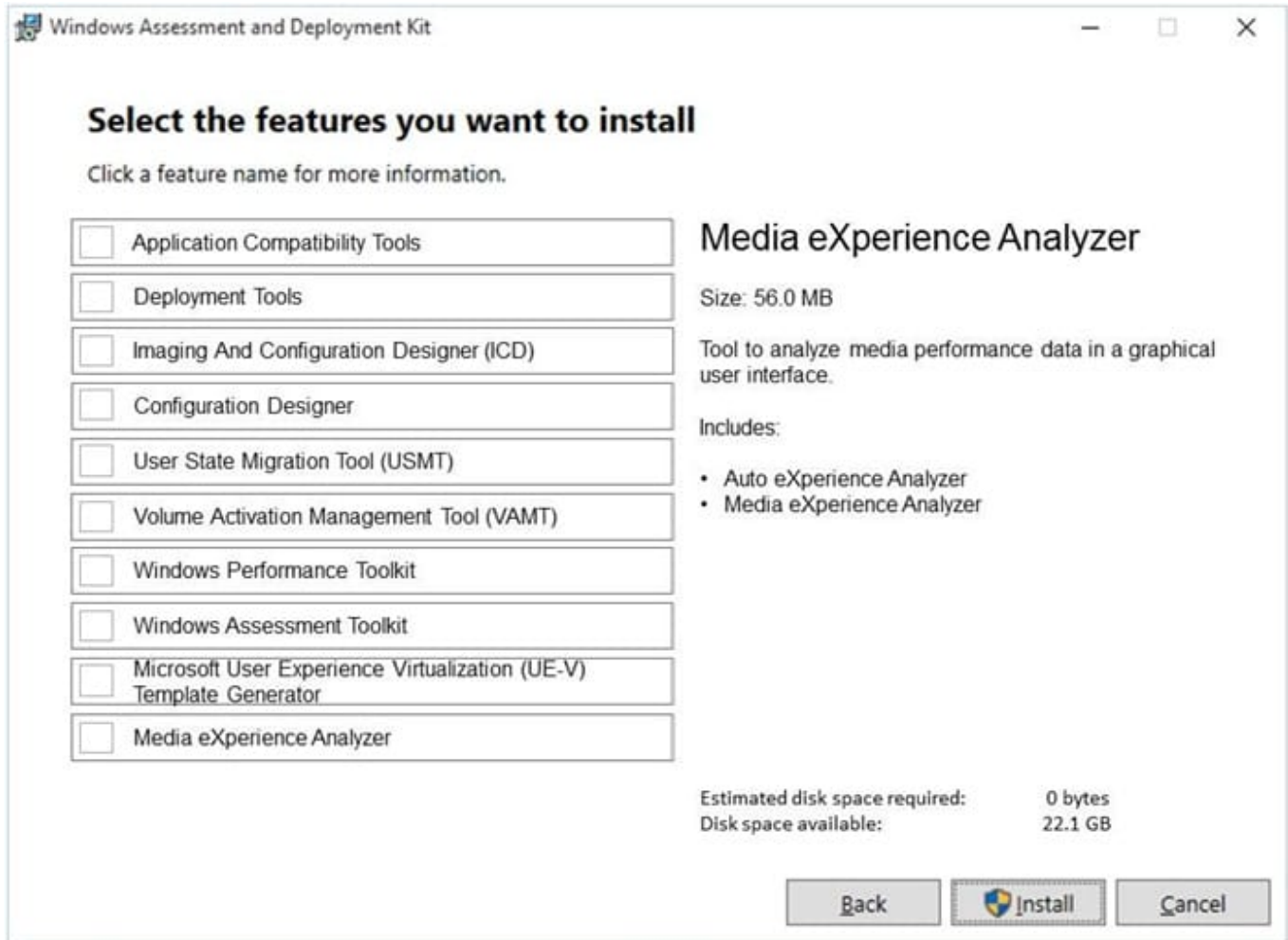
OEM Activation 3.0 (OA 3.0)

ScanState

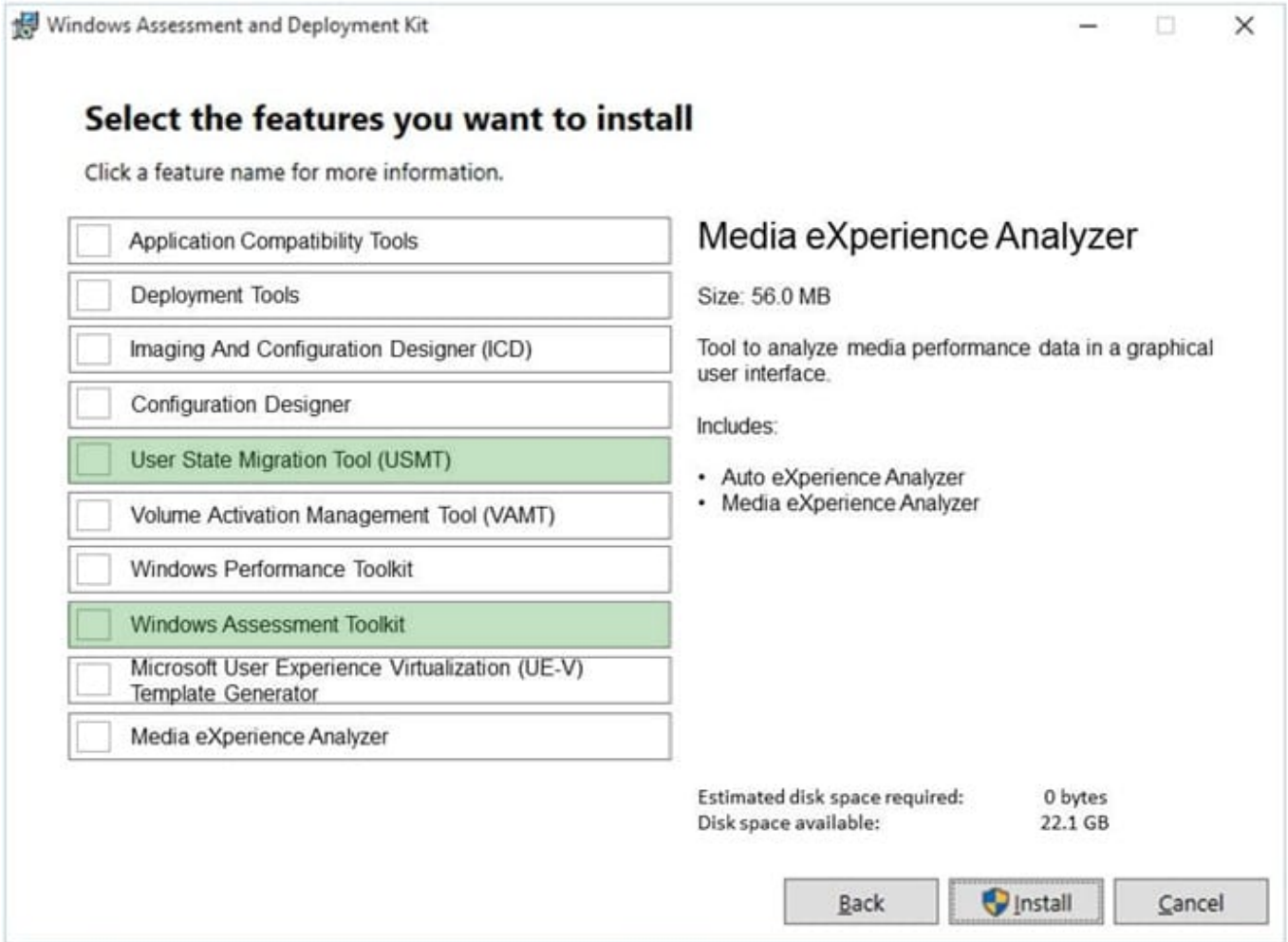
LoadState

Which two features in the Windows Assessment and Deployment Kit should you select? To answer, select the nodes in the answer area. NOTE: Each correct selection is worth one point.

Hot Area:



Correct Answer:



Box 1: User State Migration Tool (USMT)

ScanState

LoadState

The User State Migration Tool (USMT) is included with the Windows Assessment and Deployment Kit (Windows ADK) for Windows 10.

USMT includes three command-line tools:

ScanState.exe

LoadState.exe

UsmtUtils.exe

Box 2: Windows Assessment

Deployment Image Servicing and Management (DISM)

Windows System Image Manager (Windows SIM)

OEM Activation 3.0 (OA 3.0)

Windows Assessment and Deployment Kit (Windows ADK)

DISM is installed with Windows, and it is also distributed in the Windows Assessment and Deployment Kit (Windows ADK).

Windows SIM is included with the Windows ADK. Download the Windows ADK from this website.

Reference:

<https://learn.microsoft.com/en-us/windows/deployment/usmt/usmt-technical-reference>

<https://learn.microsoft.com/en-us/windows-hardware/get-started/adk-install>

QUESTION 4

You need to meet the technical requirements for the helpdesk users.

What should you do? To answer, select the appropriate options in the answer area.

NOTE: Each correct selection is worth one point.

Hot Area:

Answer Area

Add the help desk users to:

The local Administrators group on the Windows 10 computers
The Domain Computrers group in the domain group
The Event Log Readers group in the domain group
The local Event Log Readers group on the Windows 10 computers
The Group Policy Creators Owners group in the domain group
The local Power Users group on the Windows 10 computers

Troubleshooting tool that the helpdesk users should use:

Get-GPOReport
GPRresult
GPOUpdate
Group Policy Object Editor

Correct Answer:

Answer Area

Add the help desk users to:

The local Administrators group on the Windows 10 computers
The Domain Computrers group in the domain group
The Event Log Readers group in the domain group
The local Event Log Readers group on the Windows 10 computers
The Group Policy Creators Owners group in the domain group
The local Power Users group on the Windows 10 computers

Troubleshooting tool that the helpdesk users should use:

Get-GPOReport
GPRresult
GPOUpdate
Group Policy Object Editor

References: <https://www.itprotoday.com/compute-engines/what-group-policy-creator-owners-group>

QUESTION 5

Your network contains an Active Directory domain. The domain contains a user named User1.

User1 creates a Microsoft account.

User1 needs to sign in to cloud resources by using the Microsoft account without being prompted for credentials.

Which settings should User1 configure?

- A. User Accounts in Control Panel
- B. Email and app accounts in the Settings app
- C. Users in Computer Management
- D. Users in Active Directory Users and Computers

Correct Answer: B

<https://support.microsoft.com/en-za/help/4028195/microsoft-account-how-to-sign-in>

QUESTION 6

A user purchases a new computer that has Windows 10 Home preinstalled. The computer has a biometric fingerprint reader.

You need to ensure that the user can use the fingerprint reader to sign in to the computer by using an Azure Active Directory (Azure AD) account.

What should you do first?

- A. Register the computer to Azure AD.
- B. Install the latest feature updates on the computer.
- C. Upgrade the computer to Windows 10 Enterprise.
- D. Upgrade the computer to Windows 10 Pro.

Correct Answer: D

Install new features first if you plan to upgrade to other version in totally unnecessary, in other words, wasted time. Pro is the answer...

QUESTION 7

You have a workgroup computer named Computer1 that runs Windows 10. Computer1 contains five local user accounts. You need to ensure that all users who sign in to Computer1 see a picture named image1.jpg as the desktop background.

What should you do?

- A. Desktop.jpg and copy the picture to the C:\Users\Default\Desktop folder
- B. From the Settings app, modify the Background settings.
- C. From the local Group Policy Editor, modify the Desktop settings.
- D. Rename Image1.jpg as Desktop.jpg and copy the picture to the C:\Windows\system32\ folder.

Correct Answer: B

QUESTION 8

Your network contains an on-premises Active Directory domain. The domain contains two computers named Computer1 and Computer2 that run Windows 10.

You install Windows Admin Center on Computer1.

You need to manage Computer2 from Computer1 by using Windows Admin Center.

What should you do on Computer2?

- A. Add an inbound Microsoft Defender Firewall rule.
- B. Allow Windows Remote Management (WinRM) through the Microsoft Defender firewall.
- C. Update the TrustedHosts list.
- D. Run the Enable-PSRemoting cmdlet.

Correct Answer: B

Are you connecting to a workgroup machine on a different subnet?

To connect to a workgroup machine that is not on the same subnet as the gateway, make sure the firewall port for WinRM (TCP 5985) allows inbound traffic on the target machine.

Note: Troubleshooting Windows Admin Center include:

Make sure the Windows Remote Management (WinRM) service is running on both the gateway machine and managed node

Open the run dialog with WindowsKey + R

Type services.msc and press enter

In the window that opens, look for Windows Remote Management (WinRM), make sure it is running and set to automatically start

Incorrect:

Not D: The Enable-PSRemoting cmdlet configures the computer to receive PowerShell remote commands that are sent by using the WS-Management technology. WS-Management based PowerShell remoting is currently supported only on

Windows platform.

PowerShell remoting is enabled by default on Windows Server platforms. You can use Enable-PSRemoting to enable PowerShell remoting on other supported versions of Windows and to re-enable remoting if it becomes disabled.

Reference: <https://docs.microsoft.com/en-us/windows-server/manage/windows-admin-center/support/troubleshooting>

QUESTION 9

You need to meet the technical requirements for the San Diego office computers. Which Windows 10 deployment method should you use?

- A. wipe and load refresh
- B. in-place upgrade
- C. provisioning packages
- D. Windows Autopilot

Correct Answer: D

The requirement states: The computers in the San Diego office must be upgraded automatically to Windows 10 Enterprise and must be joined to Azure AD the first time a user starts each new computer. End users must not be required to accept the End User License Agreement (EULA).

Windows Autopilot is a collection of technologies used to set up and pre-configure new devices, getting them ready for productive use. You can also use Windows Autopilot to reset, repurpose and recover devices.

The OEM Windows 10 installation on the new computers can be transformed into a “business-ready” state, applying settings and policies, installing apps, and even changing the edition of Windows 10 being used (e.g. from Windows 10 Pro to

Windows 10 Enterprise) to support advanced features.

The only interaction required from the end user is to connect to a network and to verify their credentials. Everything beyond that is automated.

References:

<https://docs.microsoft.com/en-us/windows/deployment/windows-autopilot/windows-autopilot>

QUESTION 10

HOTSPOT

You have a computer that runs Windows 10.

A feature update is installed automatically.

You need to roll back the feature update.

Up to how many days after the feature update is installed can you roll back the installation, and what should you use to perform the roll back? To answer, select the appropriate options in the answer area.

NOTE: Each correct selection is worth one point.

Hot Area:

Answer Area

To roll back the feature update, use:

<input type="checkbox"/>
<input type="checkbox"/> Go back to the previous version of Windows 10
<input type="checkbox"/> Reset this PC option
<input type="checkbox"/> Uninstall an update in Control Panel

The rollback can be performed up to:

<input type="checkbox"/>
<input type="checkbox"/> 7 days after
<input type="checkbox"/> 10 days after
<input type="checkbox"/> 35 days after

Correct Answer:

Answer Area

To roll back the feature update, use:

Go back to the previous version of Windows 10
Reset this PC option
Uninstall an update in Control Panel

The rollback can be performed up to:

7 days after
10 days after
35 days after

Reference: <https://www.howtogeek.com/235474/how-to-roll-back-builds-and-uninstall-updates-on-windows-10/>

QUESTION 11

You have a computer that runs Windows 10.

You need to be able to recover the computer by using System Image Recovery.

What should you use to create a system image?

- A. Windows System Image Manager (Windows SIM)
- B. Backup and Restore (Windows 7)
- C. File History
- D. System Protection

Correct Answer: B

Reference: https://answers.microsoft.com/en-us/windows/forum/windows_10/how-to-create-a-system-image-in-windows-10/84fa6683-e3ac-4e93-9139-368af9267869

QUESTION 12

You have a Microsoft Azure Active Directory (Azure AD) tenant. Some users sign in to their computer by using Windows Hello for Business.

A user named User1 purchases a new computer and joins the computer to Azure AD.

User1 attempts to configure the sign-in options and receives the error message shown in the exhibit.

Sign-in options

***Some settings are hidden or managed by your organization.**



Windows Hello

Sign in to Windows, apps and services by teaching Windows to recognize you.

Windows Hello isn't available on this device.

[See how it works and find compatible devices.](#)

You open Device Manager and confirm that all the hardware works correctly.

You need to ensure that User1 can use Windows Hello for Business facial recognition to sign in to the computer.

What should you do first?

- A. Purchase an infrared (IR) camera.
- B. Upgrade the computer to Windows 10 Enterprise.
- C. Enable UEFI Secure Boot.
- D. Install a virtual TPM driver.

Correct Answer: B

<https://docs.microsoft.com/en-us/windows/security/identity-protection/hello-for-business/hello-planning-guide>

QUESTION 13

HOTSPOT

You need to create a virtual machines shown in the following table:

Name	Operating system	Requirement
VM1	64-bit version of Windows 8.1 Pro	Start from a floppy disk.
VM2	32-bit version of Windows 10 Pro	Start from the network.
VM3	64-bit version of Windows 10 Pro	Start from an SCSI VHD.

Which generations should you use for each virtual machine? To answer, select the appropriate options in the answer area. NOTE: Each correct selection is worth one point.

Hot Area:

VM1: ▼
Generation 1 only
Generation 2 only
Generation 1 or generation 2

VM2: ▼
Generation 1 only
Generation 2 only
Generation 1 or generation 2

VM3: ▼
Generation 1 only
Generation 2 only
Generation 1 or generation 2

Correct Answer:

VM1: ▼
Generation 1 only
Generation 2 only
Generation 1 or generation 2

VM2: ▼
Generation 1 only
Generation 2 only
Generation 1 or generation 2

VM3: ▼
Generation 1 only
Generation 2 only
Generation 1 or generation 2

QUESTION 14

You have a computer named Client1 that runs Windows 11. You perform the following actions on Client1:

1.

Enable Hyper-V.

2.

Create a virtual machine that runs Windows 11 Pro.

You need to connect to VM1 by using enhanced session mode. What should you do first?

A. Enable Remote Assistance on Client1.

B. Enable Remote Assistance on VM1.

C. Enable Remote Desktop on VM1.

D. Enable Remote Desktop on Client1.

Correct Answer: B

QUESTION 15

You have a computer named Computer1 that runs Windows 10.

Computer1 was off for one year. During that time, two feature updates and 12 quality updates were released.

From the Microsoft Update Catalog website, you download the missing updates and save the updates to Computer1.

You need to ensure that Computer1 runs the latest version of Windows 10 and is fully updated. The solution must minimize the amount of time required to update the computer.

What should you do?

A. Install the last feature update, and then install the last quality update.

B. Install the last quality update, and then install both feature updates.

C. Install the last quality update, and then install the last feature update.

D. Install the last feature update, and then install all the quality updates released after the feature update.

E. Install all the quality and feature updates in the order in which they were released.

Correct Answer: A

Reference: <https://docs.microsoft.com/en-us/windows/deployment/update/get-started-updates-channels-tools>