

# MCD-LEVEL1<sup>Q&As</sup>

MuleSoft Certified Developer - Level 1 (Mule 4)

## Pass Mulesoft MCD-LEVEL1 Exam with 100% Guarantee

Free Download Real Questions & Answers **PDF** and **VCE** file from:

<https://www.leads4pass.com/mcd-level1.html>

100% Passing Guarantee  
100% Money Back Assurance

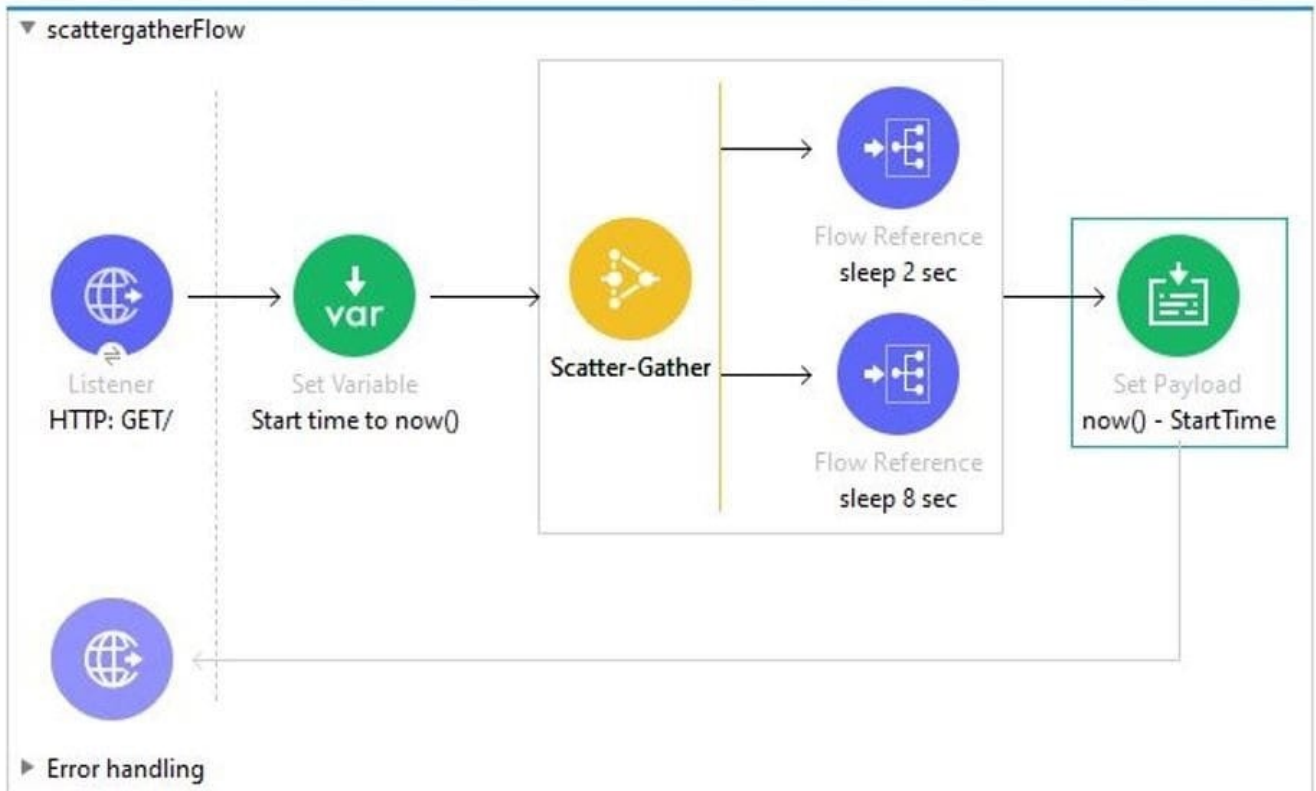
Following Questions and Answers are all new published by Mulesoft  
Official Exam Center

- ⚙️ **Instant Download** After Purchase
- ⚙️ **100% Money Back** Guarantee
- ⚙️ **365 Days** Free Update
- ⚙️ **800,000+** Satisfied Customers



**QUESTION 1**

In the execution of scatter gather, the "sleep 2 sec" Flow Reference takes about 2 sec to complete, and the "sleep 8 sec" Flow Reference takes about 8 sec to complete. About how many sec does it take from the Scatter-Gather is called until the "Set Payload" transformer is called?



- A. 8
- B. 0
- C. 2
- D. 10

Correct Answer: A

Correct answer is 8 as events are processed in parallel in case of scatter gather router

**QUESTION 2**

Which of the below activity doesn't support parallel execution?

- A. Scatter-Gather Router
- B. First Successful Router

C. Parallel For Each

D. Batch job

Correct Answer: C

The First Successful router iterates through a list of configured processing routes until one of the routes executes successfully. This is sequential execution. In all other options mentioned in the question ,we can achieve parallel execution.

---

### QUESTION 3

What should this endpoint return? <http://dev.acme.com/api/patients?name=John&surname=Bell>

A. Patient with name as John

B. Patient with surname as bell

C. Patients with either name as John or surname as Bell

D. Patients with name as John and surname as Bell

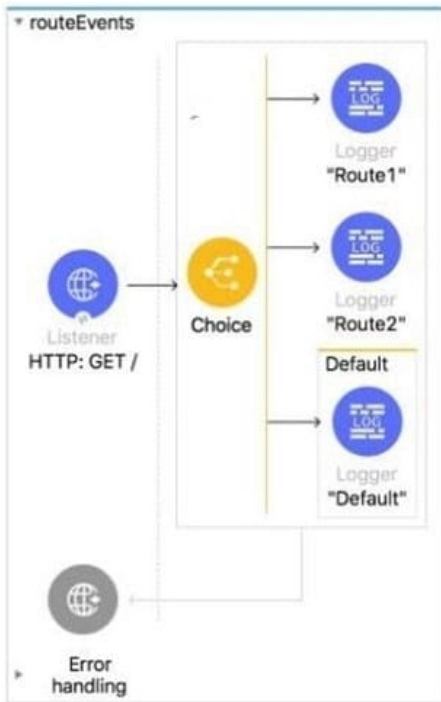
Correct Answer: D

Query parameters are a defined set of parameters attached to the end of a url. They are extensions of the URL that are used to help define specific content or actions based on the data being passed. To append query params to the end of a URL, a '?' is added followed immediately by a query parameter. To add multiple parameters, an '&' is added in between each. Hence coming back to question, endpoint would return Patients with name as John and (and is very important here) surname as Bell

---

### QUESTION 4

Refer to the exhibits.



```
<flow name="routeEvents" >
  <http:listener doc:name="HTTP: GET /" config-ref="HTTP_Listener_config"
    path="/" />
  <choice doc:name="Choice" >
    <when expression="true" >
      <logger level="INFO" doc:name="'Route1'" message="Route1"/>
    </when>
    <when expression="true" >
      <logger level="INFO" doc:name="'Route2'" message="Route2"/>
    </when>
    <otherwise >
      <logger level="INFO" doc:name="'Default'" message="Default"/>
    </otherwise>
  </choice>
</flow>
```

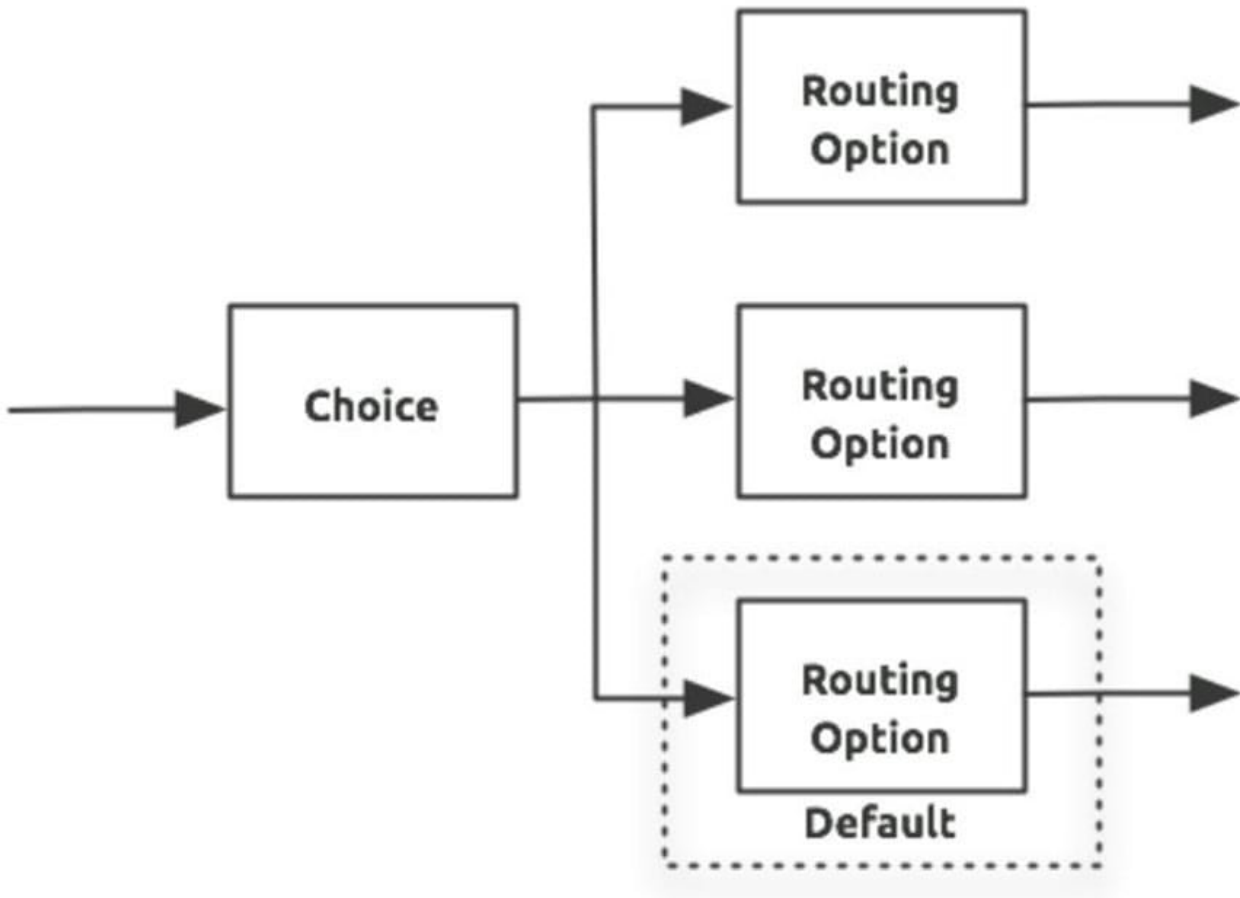
All three of the conditions for the Choice router are true. What messages are written in the application log?

- A. Route1
- B. Route2
- C. Route1,Route2
- D. Route1,Route2,Default

Correct Answer: A

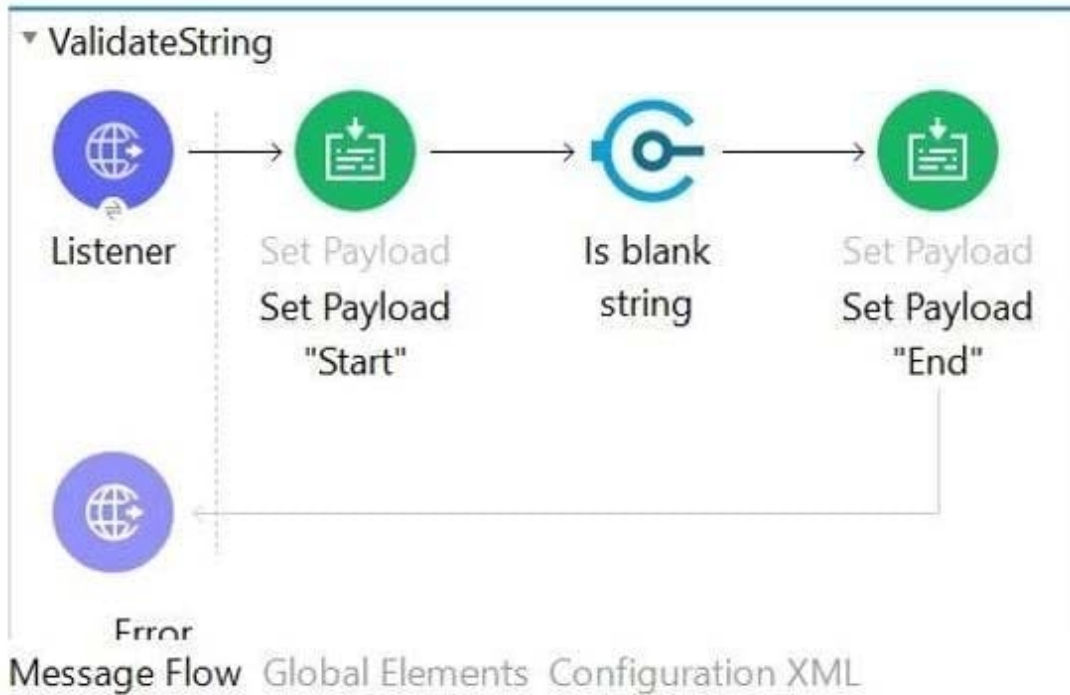
Only one of the routes in the Choice router executes, meaning that the first expression that evaluates to true triggers that route1 execution and the others are not checked. If none of the expressions are true, then the default route executes. Hence only Route1 will be executed as it is the first expression. hence output of logger is Route1. MuleSoft Doc Ref : <https://docs.mulesoft.com/mule-runtime/4.3/choice-router-concept> The Choice router dynamically routes messages through a flow according to a set of DataWeave expressions that evaluate message content. Each expression is associated with a different routing option. The effect is to add conditional processing to a flow, similar to an if/then/else code block in most programming languages.

Only one of the routes in the Choice router executes, meaning that the first expression that evaluates to true triggers that route's execution and the others are not checked. If none of the expressions are true, then the default route executes.



**QUESTION 5**

Refer to the exhibits.



```
<flow name="ValidateString" doc:id="a369617b-3785-4683-a73d-f86fa219cf73" >  
  <http:listener doc:name="Listener" doc:id="be71c0ed-fc36-4bb8-bcb9-93a6499a33a4" config-ref="HTTP_Listener" />  
  <set-payload value="Start" doc:name="Set Payload" doc:id="4ba91bd9-36bd-41ba-8067-d58af7d54cc4" />  
  <validation:is-blank-string doc:id="e8047a53-e787-4a40-aae8-7f8e6c7888cd" value="#[payload]" />  
  <set-payload value="End" doc:name="Set Payload" doc:id="19954653-ab79-40d6-9740-cd7ae25eadb9" />  
</flow>
```

A web client submits the request to the HTTP Listener. What response message would be returned to web client?

- A. End
- B. String is not blank
- C. No response would be sent back to client and request will get errored out in Mule
- D. Start

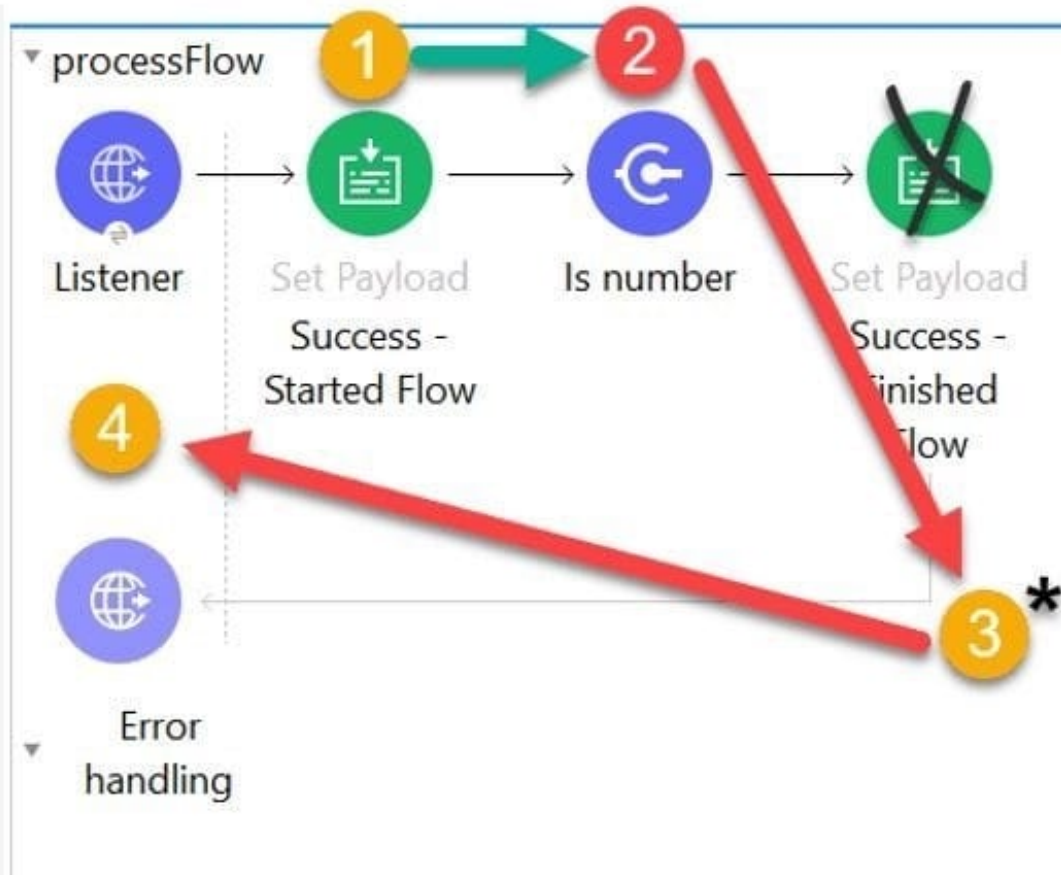
Correct Answer: B

Correct answer is String is not blank.

----- Here\\'s specifically what is happening here:

- 1) Payload is successfully set to "Start"
- 2) The Is Blank String validator creates an Error Object because the payload is string "Start". Execution stops  
#[error.description] = "String is not blank"
- 3) Because no error handler is defined, the Mule default error handler handles the error. Remember, at its heart, the Mule Default Error handler is an error handling scope with just an on error propagate
- 4) "String is not blank" is the error message returned to the requestor in the body of the HTTP request HTTP Status

Code: 500 Reference Diagram:



**\* Note that the Mule Default Error Handler is not configurable and therefore is not visually depicted in the flow.**

## QUESTION 6

A flow has a JMS Publish consume operation followed by a JMS Publish operation. Both of these operations have the default configurations. Which operation is asynchronous and which one is synchronous?

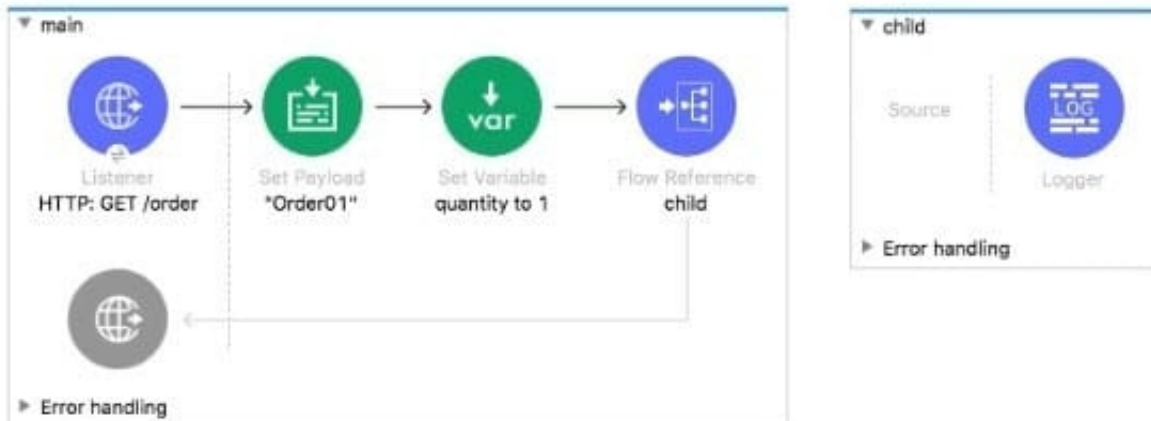
- A. Publish consume: Synchronous. Publish: Asynchronous.
- B. Publish consume: Asynchronous. Publish: Synchronous
- C. Publish consume: Asynchronous. Publish: Asynchronous
- D. Publish consume: Synchronous. Publish: Synchronous

Correct Answer: A

Publish consume: Synchronous. Publish: Asynchronous.

## QUESTION 7

Refer to the exhibit.



The main flow contains a Flow Reference for the child flow.

What values are accessible in the child flow after a web client submits a request to `http://localhost:8Q81/order?color=red`?

- A. payload
- B. payload quantity var
- C. payload color query param
- D. payload quantity var color query param

Correct Answer: D

Correct answer is payload quantity var color query param

## QUESTION 8

How are query parameters dynamically passed to an outbound REST request using an HTTP Request operation?

- A. As query parameters in the HTTP Request operation
- B. As URI parameters in the HTTP Request operation
- C. In the Mule event's payload
- D. As flow variables

Correct Answer: A

In General > Request > Query Parameters, click the plus icon (+) to add a parameter to a request. Type a name and value for the parameter or use a DataWeave expression to define the name and value.



http://\${training.host}:\${training.port}\${training.basepath}/united/flights/{dest}

Request

Method: GET (Default)

Path: /united/flights/{dest}

URL:

Body Headers Query Parameters URI Parameters

Name	Value
"Key"	"request_key"

Send correlation id: -- Empty --

### QUESTION 9

Does a root element required when creating a XML response using Dataweave?

- A. Depends on requirement
- B. Not required
- C. Always required
- D. None of these

Correct Answer: C

Root element is always required while creating XML response in DataWeave transformation

### QUESTION 10

A Mule project contains a DataWeave module like WebStore.dwl that defines a function named loginUser. The module file is located in the project's src/main/resources/libs/etl folder.

What is correct DataWeave code to import all of the WebStore.dwl file's functions and then call the loginUser function for the login "Todd.Pal@mulesoft.com"?

- A. 1. import libs.etl
- 2.
- 2. --
- 3.
- 3. WebStore.loginUser("Todd.Pal@mulesoft.com")

B. 1. 1. import \* from libs::etl

2.

2. --

3.

3. WebStore::loginUser("Todd.Pal@mulesoft.com")

C. 1. 1. import libs.etl.WebStore

2.

2. --

3.

3. loginUser("Todd.Pal@mulesoft.com")

D. 1. 1. import \* from libs::etl::WebStore

2.

2. --

3.

3. loginUser("Todd.Pal@mulesoft.com")

Correct Answer: D

\*

To use custom modules, you need to import the module or functions you want to use by adding the import directive to the head of your DataWeave script, for example:

1) Does not identify any functions to import from the String module:

```
import dw::core::Strings
```

2) To identify a specific function to import from the String module:

```
import camelize, capitalize from dw::core::Strings
```

3) To import all functions from the String module:

```
import * from dw::core::Strings
```

The way you import a module impacts the way you need to call its functions from a DataWeave script. If the directive does not list specific functions to import or use \* from to import all functions from a function module, you need to specify the

module when you call the function from your script.

\*

In given scenario, it's mentioned to import all of the WebStore.dwl So correct answer is:

Reference: <https://docs.mulesoft.com/mule-runtime/4.3/dw-functions>

---

### QUESTION 11

Refer to the exhibit.

```
1 %dw 2.0
2 output application/xml
3 var conductorIds = [592, 921]
4 ---
5
6
7
8
9
10
```

```
<?xml version='1.0' encoding='UTF-8'?>
<trains>
  <train>
    <engineerId>592</engineerId>
  </train>
  <train>
    <engineerId>921</engineerId>
  </train>
</trains>
```

What DataWeave expression transforms the conductorIds array to the XML output?

A. 

```
  {(  
    trains: conductorIds map ( (engId, index) ->  
      train: {  
        engineerId: engId  
      }  
    )  
  )}
```

B. 

```
trains:  
  conductorIds map ( (engId, index) ->  
    train: {  
      engineerId: engId  
    }  
  )
```

C. 

```
trains:  
{(  
  conductorIds map ( (engId, index) ->  
    train: {  
      engineerId: engId  
    }  
  )  
)}
```

D. 

```
{  
  trains: conductorIds map ( (engId, index) ->  
    train: {  
      engineerId: engId  
    }  
  )  
}
```

A. Option A

B. Option B

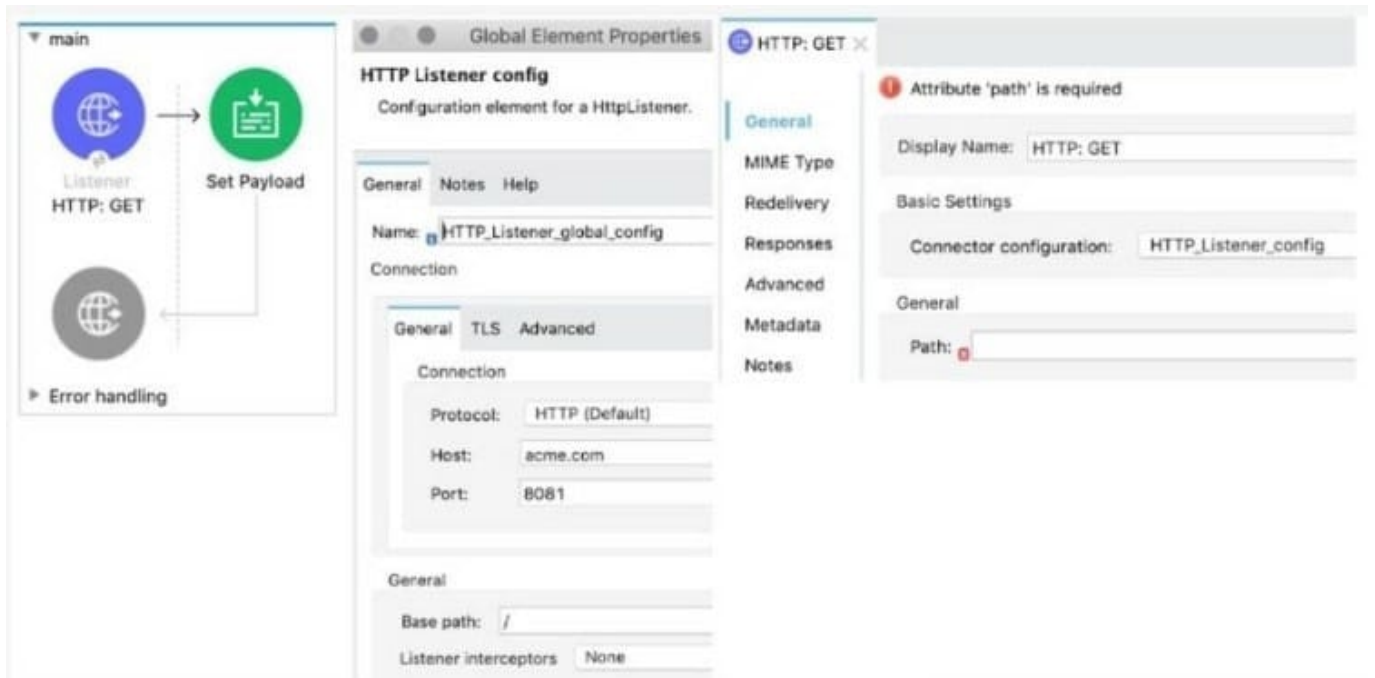
C. Option C

D. Option D

Correct Answer: C

## QUESTION 12

Refer to the exhibits.



The Mule application implements a REST API that accepts GET requests from web clients on the URLs: `http://acme.com/order/status` and `http://acme.com/customer/status`. What path value can be set in the HTTP GET event source to accept web client requests from both of these URLs?

- A. `*[order,customer]/status`
- B. `*/status`
- C. `?[order,customer]/status`
- D. `*status`

Correct Answer: B

**QUESTION 13**

Refer to the exhibit.

How should the WHERE clause be changed to set the city and state values from the configured input parameters?

## Query

## SQL Query Text:

```
SELECT * FROM accounts
WHERE city = attributes.queryParams.city AND
state = attributes.queryParams.state
```

## Input Parameters:

```
1 {
2   city: attributes.queryParams.city,
3   state: attributes.queryParams.state
4 }
```

- A. `WHERE city = :city AND state = :state`
- B. `WHERE city = attributes.city AND state = attributes.state`
- C. `WHERE city := ${city} AND state := ${state}`
- D. `WHERE city = #[city] AND state = #[state]`

A. Option A

B. Option B

C. Option C

D. Option D

Correct Answer: A

**QUESTION 14**

What should this endpoint return considering the API is build using standard practices?

<http://dev.acme.com/api/patients?year=2021>

A. Patient with id 2021

B. Patients from year 2021

C. No patients

D. All patients

Correct Answer: B

Correct answer is Patients from year 2021.

The thing to note here is that year is not a query parameter and not the uri parameter. Hence it will filter all the patients and return the ones for whom year is 2021

---

## QUESTION 15

In the Database On Table Row operation, what does the Watermark column enable the On Table Row operation to do?

A. To avoid duplicate processing of records in a database.

B. To delete the most recent records retrieved from a database to enable database caching

C. To enable duplicate processing of records in a database

D. To save the most recent records retrieved from a database to enable database caching

Correct Answer: A

The correct answer is To avoid duplicate processing of records in a database. If a watermark column is provided, the values taken from that column are used to filter the contents of the next poll, so that only rows with a greater watermark value are returned. If an ID column is provided, this component automatically verifies that the same row is not picked twice by concurrent polls. Mule doc reference : <https://docs.mulesoft.com/db-connector/1.8/database-documentation#listener>

[MCD-LEVEL1 PDF Dumps](#)

[MCD-LEVEL1 Practice Test](#)

[MCD-LEVEL1 Braindumps](#)