

JN0-660^{Q&As}

Service Provider Routing and Switching, Professional

Pass Juniper JN0-660 Exam with 100% Guarantee

Free Download Real Questions & Answers **PDF** and **VCE** file from:

<https://www.leads4pass.com/jn0-660.html>

100% Passing Guarantee
100% Money Back Assurance

Following Questions and Answers are all new published by Juniper
Official Exam Center

- ⚙ **Instant Download** After Purchase
- ⚙ **100% Money Back** Guarantee
- ⚙ **365 Days** Free Update
- ⚙ **800,000+** Satisfied Customers



QUESTION 1

Router R5 has the overload parameter configured. Which statement is true?

- A. R5 will purge its LSAs from the network until the overload condition is cleared.
- B. R5 will increase its link metrics to 65535 and will stop forwarding transit traffic to OSPF destinations.
- C. R5 will increase its link metrics to 65535 and will continue to forward transit traffic to OSPF destinations.
- D. R5 will send an overload LSA to its neighbors to indicate it is in the overload state.

Correct Answer: C

QUESTION 2

Which operational mode command displays the number of configured forwarding classes?

- A. show interfaces queue ge-1/0/0
- B. show interfaces terse
- C. show class-of-service interface
- D. show forwarding classes

Correct Answer: A

QUESTION 3

What does an operation (op) script do?

- A. Instructs the Junos OS to perform a set of actions whenever the script is run manually or called by another script
- B. Instructs the Junos OS to perform a set of actions based on its location in the configuration.
- C. Instructs the Junos OS to perform a set of actions during the process of activating configuration changes.
- D. Instructs the Junos OS to perform a set of actions automatically based on operational status of the device.

Correct Answer: A

QUESTION 4

Which neighbor state indicates that two BGP neighbors have full connectivity?

- A. Idle
- B. Connect

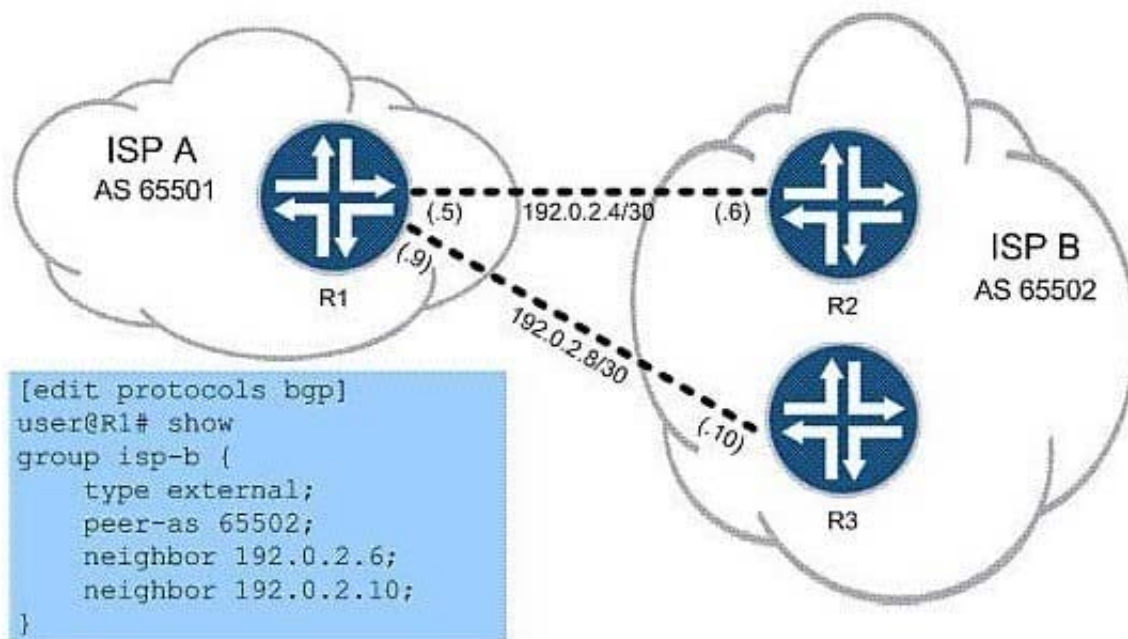
C. Open Confirm

D. Established

Correct Answer: D

QUESTION 5

Click the Exhibit button.



In the exhibit, ISP A is charged a higher rate for traffic sent to R2. You are asked to lower costs for ISP A by configuring R1 to send traffic to R3 whenever possible. What are two ways to do this? (Choose two.)

- A. set protocols bgp group isp-b neighbor 192.0.2.6 local-preference 120
- B. set protocols bgp group isp-b neighbor 192.0.2.6 local-preference 80
- C. set protocols bgp group isp-b neighbor 192.0.2.10 local-preference 120
- D. set protocols bgp group isp-b neighbor 192.0.2.10 local-preference 80

Correct Answer: BC

QUESTION 6

Click the Exhibit button.

```
[edit]
user@host# show class-of-service
schedulers {
    voice {
        transmit-rate percent 40;
        priority strict-high;
    }
    critical {
        transmit-rate percent 25;
        priority high;
    }
    less-critical {
        transmit-rate percent 15;
        priority medium-high;
    }
    data {
        transmit-rate percent 10;
        priority medium-low;
    }
    left-over {
        transmit-rate percent 5;
        priority low;
    }
}
```

On your MX Series router, traffic using the voice scheduler has exceeded its transmit rate. All other data is currently in profile. Referring to the exhibit, which statement is correct?

- A. The voice queue is serviced later than the less-critical queue.
- B. The voice queue is serviced later than the left-over queue.
- C. The voice queue is serviced before the critical queue.
- D. The voice queue is serviced after data queue.

Correct Answer: C

QUESTION 7

You are hired at an ISP and your new employer asks you to become familiar with the routing policy. The `42 +.*[21112]$` regular expression is in one of the policies. Which three AS paths match the regex statement? (Choose three.)

- A. 42 42 42 42 6
- B. 42 42 42 27 21
- C. 42 42 42 42 12
- D. 42 69 2112 112

E. 42 69 212112

Correct Answer: BCE

QUESTION 8

Click the Exhibit button.

```
[edit]
user@host# show class-of-service
schedulers {
    voice {
        transmit-rate percent 40;
        priority strict-high;
    }
    critical {
        transmit-rate percent 25;
        priority high;
    }
    less-critical {
        transmit-rate percent 15;
        priority medium-high;
    }
    data {
        transmit-rate percent 10;
        priority medium-low;
    }
    left-over {
        transmit-rate percent 5;
        priority low;
    }
}
```

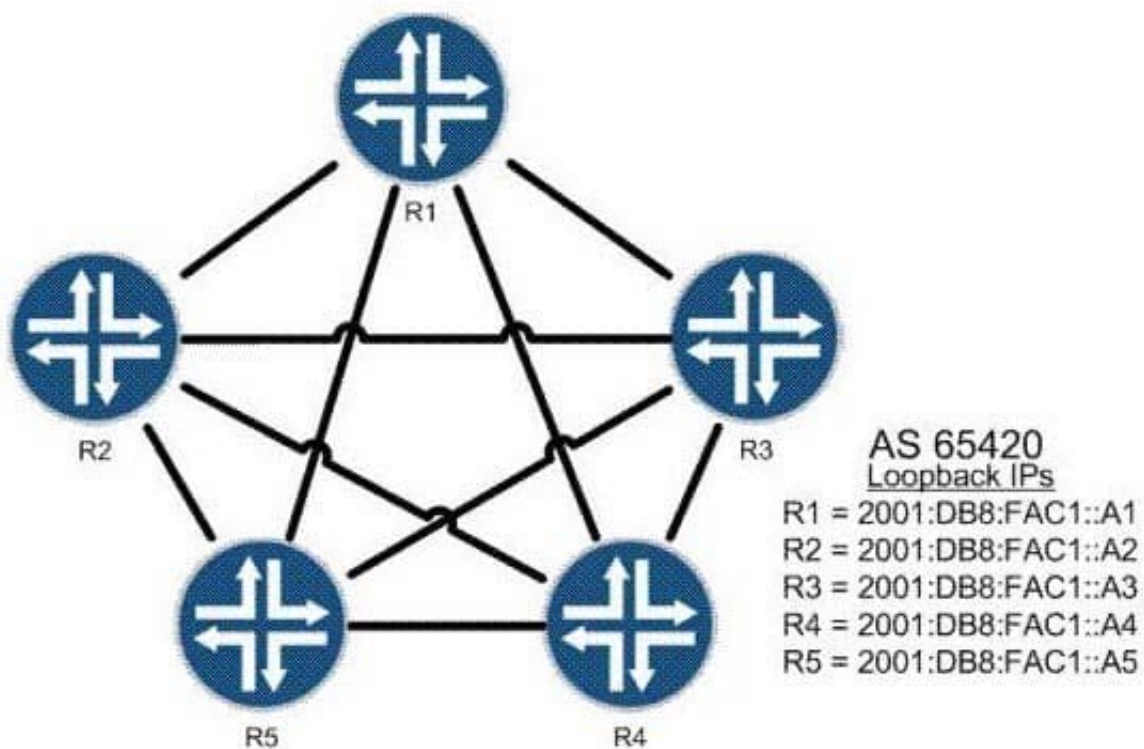
On your MX Series router, traffic using the critical scheduler is out of profile. All other data is currently in profile. Referring to the exhibit, which statement is correct?

- A. The critical queue is serviced before the less-critical queue.
- B. The critical queue is serviced after the left-over queue.
- C. The critical queue is serviced before the data queue.
- D. The critical queue is serviced before the voice queue.

Correct Answer: B

QUESTION 9

Click the Exhibit button.



The routers shown in the exhibit are connected in a full BGP mesh. R1 is the route reflector and R2 through R5 are clients. R3 should only receive one copy of all routes sent from R4. Which configuration is valid?

- ☐ A. [edit protocols bgp]
root@R2# show
group AS65420 {
 type internal;
 local-address 2001:db8:fac1::a2;
 cluster 10.1.1.1;
 neighbor 2001:db8:fac1::a1;
 neighbor 2001:db8:fac1::a3;
 neighbor 2001:db8:fac1::a4;
 neighbor 2001:db8:fac1::a5;
}
- ☐ B. [edit protocols bgp]
root@R2# show
group AS65420 {
 type internal;
 local-address 2001:db8:fac1::a2;
 no-client-reflect;
 neighbor 2001:db8:fac1::a1;
 neighbor 2001:db8:fac1::a3;
 neighbor 2001:db8:fac1::a4;
 neighbor 2001:db8:fac1::a5;
}
- ☐ C. [edit protocols bgp]
root@R1# show
group AS65420 {
 type internal;
 local-address 2001:db8:fac1::a1;
 cluster 10.1.1.1;
 no-client-reflect;
 neighbor 2001:db8:fac1::a2;
 neighbor 2001:db8:fac1::a3;
 neighbor 2001:db8:fac1::a4;
 neighbor 2001:db8:fac1::a5;
}
- ☐ D. [edit protocols bgp]
root@R1# show
group AS65420 {
 type internal;
 local-address 2001:db8:fac1::a1;
 no-client-reflect;
 neighbor 2001:db8:fac1::a2;
 neighbor 2001:db8:fac1::a3;
 neighbor 2001:db8:fac1::a4;
 neighbor 2001:db8:fac1::a5;
}

A. Option A

B. Option B

C. Option C

D. Option D

Correct Answer: C

QUESTION 10

Click the Exhibit button.


```
routing-options {
  interface-routes {
    rib-group inet ifrg;
  }
  rib-groups {
    ifrg {
      import-rib [ inet.0 inet.2 ];
    }
    mcrfg {
      export-rib inet.2;
      import-rib inet.2;
    }
  }
}
protocols {
  msdp {
    rib-group mcrfg;
    group lab {
      peer 192.168.6.18 {
        local-address 192.168.6.17;
      }
    }
  }
  pim {
    dense-groups {
      224.0.1.39/32;
      224.0.1.40/32;
    }
    rib-group inet mcrfg;
    rp {
      local {
        address 192.168.1.1;
      }
    }
    interface all {
      mode sparse-dense;
      version 1;
    }
  }
}
```

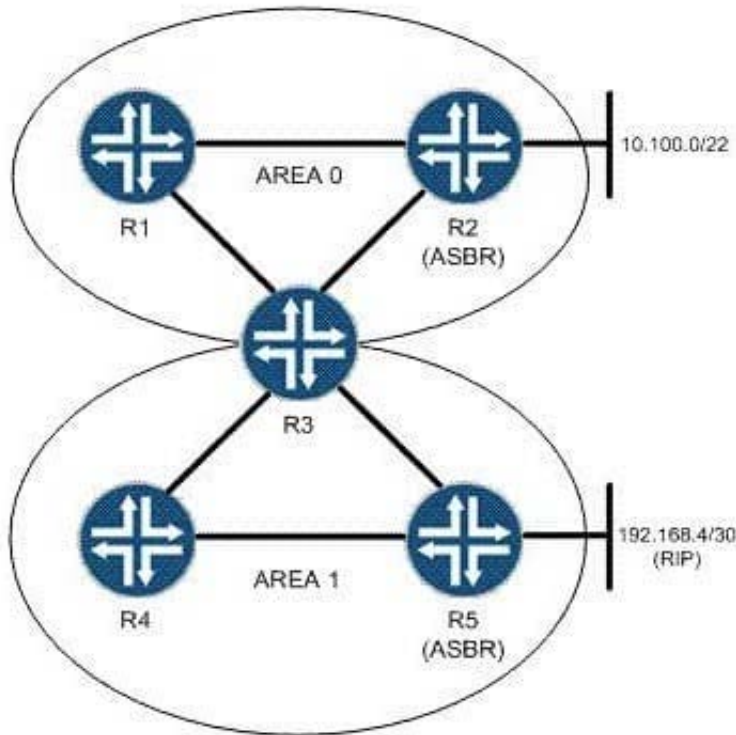
What is the significance of RIB groups, as shown in the exhibit?

- A. RIB groups alter the multicast RPF check table to inet.0.
- B. RIB groups alter the multicast RPF check table to inet.2.
- C. RIB groups alter the multicast RPF check table to inet.4.
- D. RIB groups alter the multicast RPF check table to inet.3.

Correct Answer: B

QUESTION 11

Click the Exhibit button.



You are asked to configure an OSPF network based on the topology shown in the exhibit. Area 1 must not receive Type 5 LSAs from the backbone, but must be capable of containing ASBRs.

What will accomplish this?

- A. Area 1 should be configured as a stub area, which by default meets the network's requirements.
- B. R3 should be configured with no-externals for Area 1, which will suppress Type 5 announcements.
- C. R3 should be configured with no-summaries for Area 1, which will suppress Type 5 announcements.
- D. Area 1 should be configured as an NSSA, which by default meets the network's requirements.

Correct Answer: D

QUESTION 12

You operate a Layer 3 VPN for multiple customers. To support advanced route filtering on your PE routers, you must advertise more than one BGP community on advertised VPN routes to remote PE routers. Which routing-instance

configuration parameter supports this requirement?

- A. vrf-import
- B. vrf-export
- C. vrf-target import
- D. vrf-target export

Correct Answer: B

QUESTION 13

You are configuring CoS schedulers on an M Series router. For some queues, you want to limit throughput to the configured transmit rate, and buffer excess traffic. Which two transmission rate options can you use? (Choose two.)

- A. exact
- B. rate-limit
- C. remainder
- D. shaping-rate

Correct Answer: AD

QUESTION 14

You are configuring a Layer 2 circuit. Which two configuration steps are required? (Choose two.)

- A. Configure LDP on the interfaces between PE and CE routers.
- B. Configure circuit or translational cross-connects between PE routers and between PE and P routers.
- C. Configure circuit or translational cross-connects between PE and CE routers.
- D. Configure LDP on the interfaces between PE routers and between PE and P routers.

Correct Answer: CD

QUESTION 15

You have recently configured an aggregated Ethernet interface between two devices in your network. The member links do not all reside within the same PFE complex. You must ensure that the bandwidth and burst size defined in a policer applied to this aggregated Ethernet interface are properly enforced when the traffic falls out of profile.

Which configuration parameter should you use?

- A. committed-information-rate

- B. committed-burst-size
- C. shared-bandwidth-policer
- D. physical-interface-policer

Correct Answer: C

[Latest JN0-660 Dumps](#)

[JN0-660 Study Guide](#)

[JN0-660 Braindumps](#)