

## JN0-647<sup>Q&As</sup>

Enterprise Routing and Switching Exam

**Pass Juniper JN0-647 Exam with 100% Guarantee**

Free Download Real Questions & Answers **PDF** and **VCE** file from:

<https://www.leads4pass.com/jn0-647.html>

100% Passing Guarantee  
100% Money Back Assurance

Following Questions and Answers are all new published by Juniper  
Official Exam Center

-  **Instant Download** After Purchase
-  **100% Money Back** Guarantee
-  **365 Days** Free Update
-  **800,000+** Satisfied Customers



**QUESTION 1**

Which two statements is true regarding the next hop attribute? (Choose two.)

- A. it is not changed when sent across EBGP sessions
- B. it is changed to self for IBGP routes learned from EBGP
- C. it is not changed for IGBP routes learned from EBGP
- D. it is Changed by default when sent across EBGP sessions

Correct Answer: CD

---

**QUESTION 2**

Which two statements are true about OSPFv3? (Choose two.)

- A. OSPFv3 packets are sent using local subnet addressing.
- B. OSPFv3 packets are sent using link local addressing.
- C. The authentication mechanisms in OSPFv3 are the same mechanisms used in OSPFv2.
- D. The authentication mechanisms from OSPFv2 are not present in OSPFv3.

Correct Answer: BD

---

**QUESTION 3**

Which protocol is a multicast routing protocol?

- A. OSPF
- B. BGP
- C. PIM
- D. IS-IS

Correct Answer: C

---

**QUESTION 4**

You created a firewall rule to protect the Routing Engine. After applying the rule, your OSPF adjacencies dropped.

How would you solve this problem?

- A. Create a firewall term that allows IP protocol 89.

- B. Define a router ID under the [edit routing-options] hierarchy.
- C. Configure the loopback interface under the [edit protocols ospf] hierarchy.
- D. Apply the firewall filter to the physical ports.

Correct Answer: A

---

#### QUESTION 5

Which two statements are true about PIM source-specific multicast (SSM)? (Choose two.)

- A. The receiver DR builds a source-base tree to the RP.
- B. S, G is always used.
- C. A different group address must be used by each source.
- D. IGMPv3 is required.

Correct Answer: BD

---

#### QUESTION 6

Click the Exhibit button.

```
[edit policy-options]
user@router# show
as-path regex "65100 . (65200|65300) +21870";
```

Which AS path matches the AS path regular expression shown in the exhibit?

- A. 65100 65200 21870 21870
- B. 65100 65101 65200 21870 21870
- C. 65100 21870 65200 65300
- D. 65100 65101 65200 65300 21870

Correct Answer: B

---

#### QUESTION 7

Click the Exhibit button.

```
user@switch1> show spanning-tree mstp configuration
MSTP information
Context identifier : 0
Region name : MSTP-TEST
Revision : 1
Configuration digest : 0x41d7ceff27df8ac51350907ee0a1af2

MSTI Member VLANs
0    0-9, 11-19, 21-29, 31-39, 41-49, 51-4094
1    10, 20
2    30, 40
3.   50
```

```
user@switch2> show spanning-tree mstp configuration
MSTP information
Context identifier : 0
Region name : MSTP-TEST
Revision : 1
Configuration digest : 0x41d7ceff27df8ac51350907ee0a1af2

MSTI Member VLANs
0    0-9, 11-19, 21-29, 31-39, 41-49, 51-4094
1    10, 20
2    30, 40
3.   50
```

```
user@switch3> show spanning-tree mstp configuration
MSTP information
Context identifier : 0
Region name : MSTP-TEST
Revision : 1
Configuration digest : 0x41d7ceff27df8ac51350907ee0a1af2

MSTI Member VLANs
0    0-9, 11-19, 21-39, 41-49, 51-4094
1    10, 20, 30
2    40
3.   50
```

You have three switches, each with a trunk connection allowing all VLANs to the switches. CIST will converge, however MSTP will not.

Referring to the exhibit, which statement is correct?

- A. Switch1 is the CIST root bridge.
- B. Switch2 is the MSTI root bridge.

C. Switch3's context identifier must be changed.

D. Switch3's configuration digest is different than for switch1 and for switch2.

Correct Answer: D

---

#### QUESTION 8

Which statement is correct about CoS policers on Junos devices?

A. Traffic that exceeds a policer's traffic profile can be dropped or assigned to a specific drop profile.

B. A policer can assign in-profile traffic to a specific forwarding class.

C. A policer does not alter in-profile traffic.

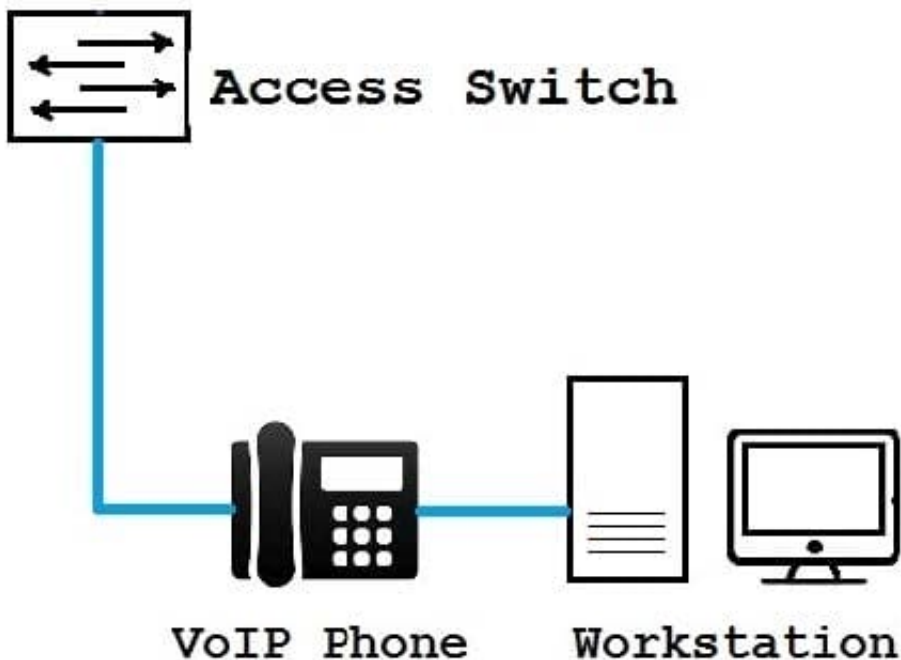
D. Policers can be configured to buffer traffic that exceeds the policer's traffic profile.

Correct Answer: C

---

#### QUESTION 9

Click the Exhibit button.



You have configured 802.1X single supplicant mode on the access switch. The VoIP phone does not support 802.1X authentication.

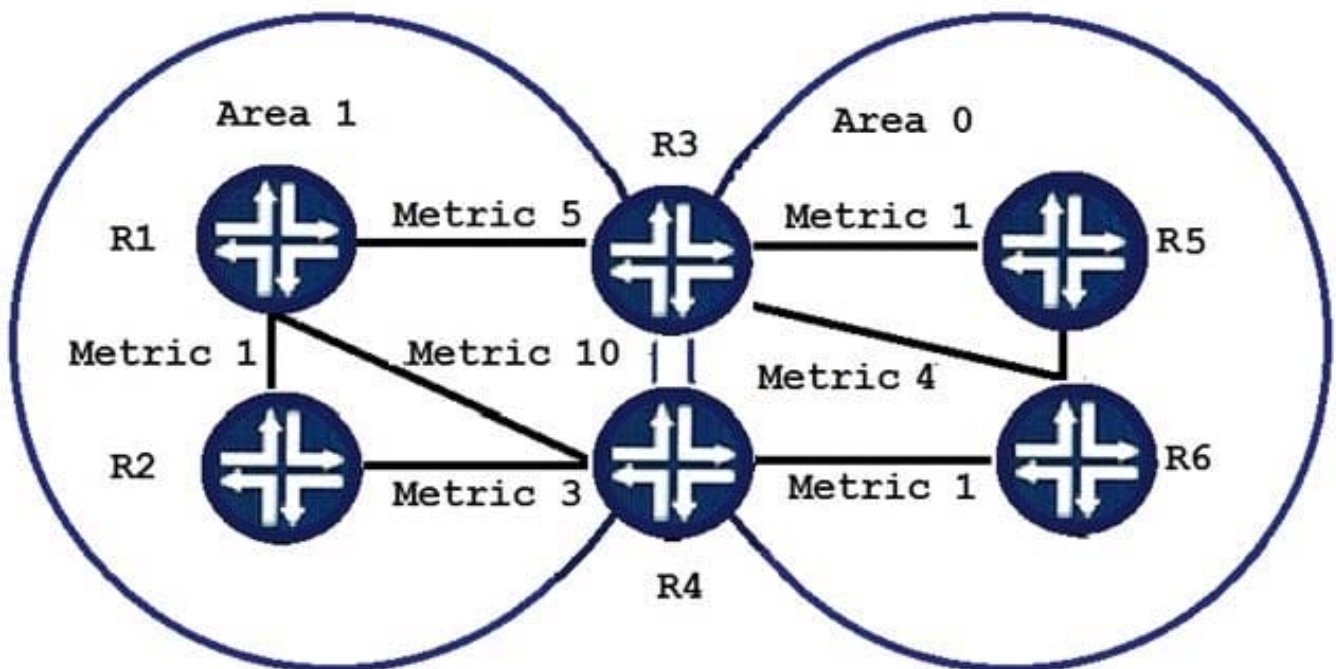
Referring to the exhibit, which statement is true?

- A. MAC bypass must be configured for the VoIP phone for this solution to work.
- B. Authentication must be changed to multiple supplicant mode for this solution to work.
- C. The VoIP phone will be able to communicate over the network after the workstation authenticates.
- D. The VoIP phone will not be able to communicate over the network.

Correct Answer: C

**QUESTION 10**

Click the Exhibit button.



```
[edit protocols ospf]
user@R3# show area 1
stub default-metric 11 no-summaries;
interface ge-0/0/3.0;
```

```
[edit protocols ospf]
user@R4# show area 1
stub default-metric 12 no-summaries;
interface ge-0/0/2.0;
interface ge-0/0/3.0;
```

Referring to the exhibit, Area 1 is a stub area.

Which two statements are correct in this scenario? (Choose two.)

- A. R2 will send traffic to unknown destinations using R1 or R4.
- B. R1 will send traffic to unknown destinations using R3 or R4.
- C. R1 will send traffic to unknown destinations using only R3.
- D. R2 will send traffic to unknown destinations using only R4.

Correct Answer: CD

---

**QUESTION 11**

Which statement is correct regarding the isolated ports?

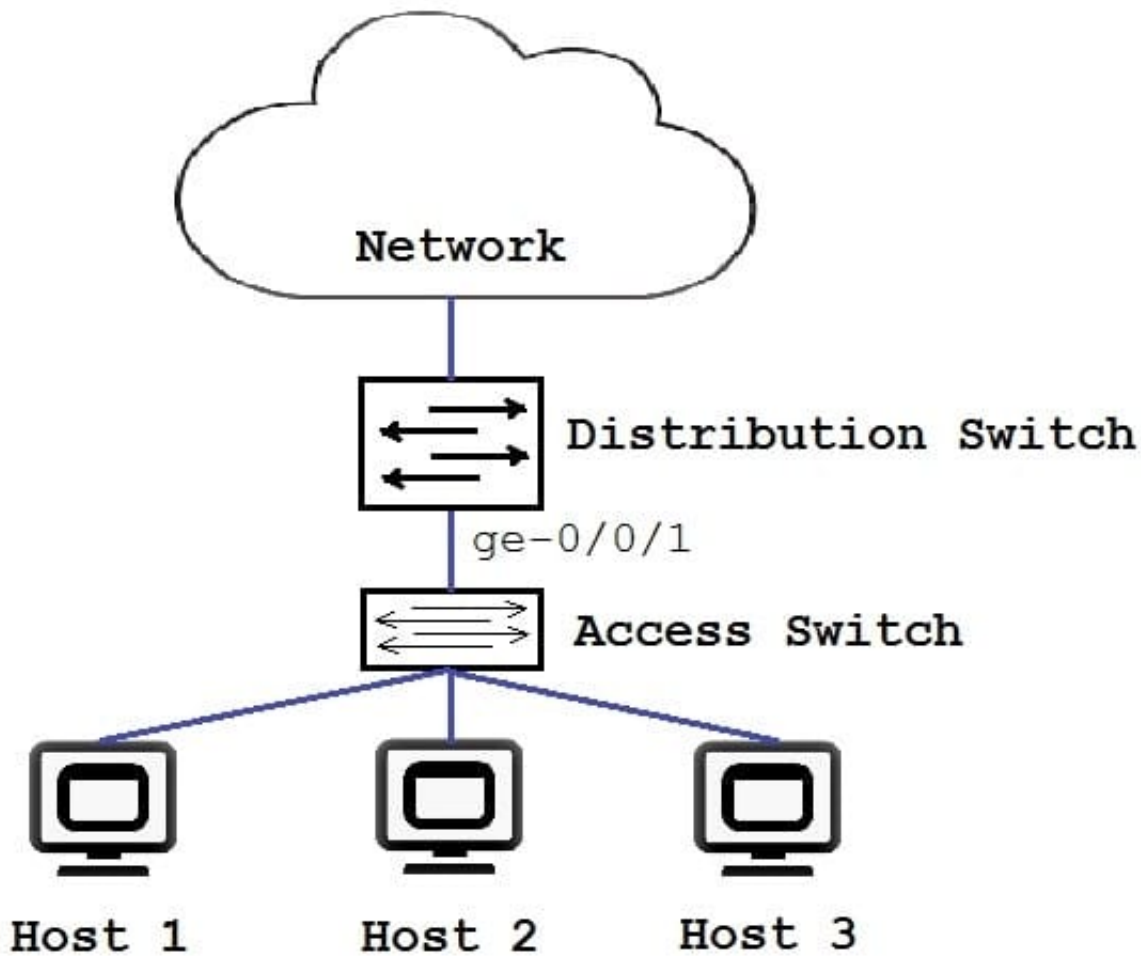
- A. isolated ports are trunk ports that have layer 2 connectivity with all other ports
- B. isolated port are access ports that only have layer 2 connectivity with other isolated port
- C. isolated port are access port that only have layer 2 connectivity with promiscuous ports
- D. isolated port are trunk ports that have layer 2 connectivity with all community ports

Correct Answer: C

---

**QUESTION 12**

Click the Exhibit button.



```
{master: 0} [edit]
user@switch#show protocols dot1x
authenticator {
  interface {
    ge-0/0/1.0 {
      supplicant single;
    }
  }
}
```

You have deployed the access control configuration to the distribution switch. Referring to the exhibit, which statement is true?

- A. All hosts connected to the access switch require authentication to access the network.
- B. All hosts connected to the access switch will have access to the network after one host authenticates.



- C. All hosts connected to the access switch will have access to the network without authentication.
- D. Only the first host to authenticate will have access to the network, other hosts will be blocked.

Correct Answer: B

---

### QUESTION 13

Click the exhibit.

```
[edit class-of-service schedulers]
user@router# show
s-1 {
    transmit-rate percent 30;
    priority high;
}
s-2 {
    transmit -rate percent 5;
    priority medium-high;
}
s-3 {
    transmit-rate percent 30;
    priority medium-low;
}
s-4 {
    transmit-rate percent 35;
    priority low;
}
```

Referring to the exhibit, traffic handled by the s-1 scheduler is out of profile. Assuming bandwidth is available in this scenario, which statement is correct?

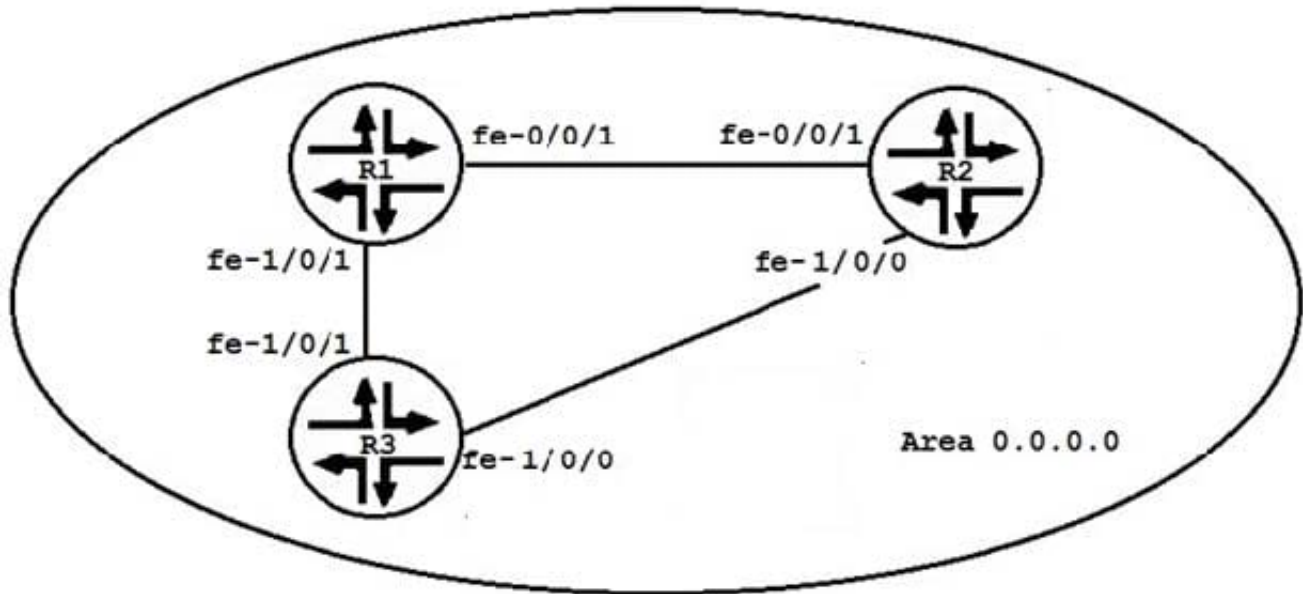
- A. Traffic handled by the s-1 scheduler is serviced immediately after traffic being serviced by the s-4 scheduler.
- B. Traffic handled by the s-1 scheduler is serviced immediately before traffic being serviced by the s-4 scheduler.
- C. Traffic handled by the s-1 scheduler is serviced immediately before traffic being serviced by the s-2 scheduler.
- D. Traffic handled by the s-1 scheduler is serviced immediately after traffic being serviced by the s-2 scheduler.

Correct Answer: D

---

### QUESTION 14

Click the Exhibit button.



Your network is experiencing congestion across the link between R2 and R3. You must make changes to alleviate traffic congestion from R3 to R2.

Referring to the exhibit, which two commands would accomplish this task? (Choose two.)

- A. [edit protocol ospf]  
user@R1# set reference-bandwidth 10g
- B. [edit protocol ospf]  
user@R3# set reference-bandwidth 10g
- C. [edit protocols ospf area 0.0.0.0 ]  
user@R1# set interface fe-1/0/1 metric 5
- D. [edit protocols ospf area 0.0.0.0 ]  
user@R3# set interface fe-1/0/1 metric 5

A. B. C. D.

Correct Answer: BD

**QUESTION 15**

Click the Exhibit button.

```
user@R1> show ospf database extensive
OSPF link state database, area 0.0.0.100
Type      ID          Adv Rtr      Seq          Age      Opt      Cksum      Len
Router    10.100.1.1  10.100.1.1  0x8000531    166     0x22     0xfc35     36
Bits 0x2, link count 1
Id 10.100.0.2, data 10.100.0.1, Type Transit (2)
TOS count 0, TOS 0 metric 10
Aging timer 00:57:13
Installed 00:02:42 ago, expires in 00:57:14, sent 00:02:40 ago
Router 192.168.129.200 192.168.129.200 0x8000015a 548 0x2 0x517e 84
Bits 0x2, link count 5
Id 192.168.128.0, data 255.255.255.0, Type Stub (3)
TOS count 0, TOS 0 metric 1
Id 10.100.0.2, data 10.100.0.2, Type transit (2)
TOS count 0, TOS 0 metric 1
Id 10.100.2.1, data 10.100.2.1, Type transit (2)
TOS count 0, TOS 0 metric 1
Id 10.100.3.1, data 10.100.3.1, Type transit (2)
TOS count 0, TOS 0 metric 1
Id 192.168.129.0, data 255.255.255.0, Type Stub (3)
TOS count 0, TOS 0 metric 1
Aging timer 00:50:51
Installed 00:09:05 ago, expires in 00:50:52, sent 00:09:03 ago
Router *192.168.135.138 192.168.135.138 0x800001c3 2687 0x2 0x2b08 60
Bits 0x0, link count 3
Id 10.100.3.1, data 10.100.3.2, Type transit (2)
TOS count 0, TOS 0 metric 1
Id 10.100.2.1, data 10.100.2.2, Type transit (2)
TOS count 0, TOS 0 metric 1
Id 192.168.135.138, data 255.255.255.0, Type Stub (3)
TOS count 0, TOS 0 metric 0
Gen timer 00:05:12
Aging timer 00:15:12
Installed 00:44:47 ago, expires in 00:15:13, sent 00:44:45 ago
Ours
```

Referring to the exhibit, which statement is true?

- A. R1 is an ASBR.
- B. R1 has the B bit set.
- C. R1 is a backbone router.
- D. R1 is an ABR.

Correct Answer: A