

## JN0-348<sup>Q&As</sup>

Enterprise Routing and Switching, Specialist

### Pass Juniper JN0-348 Exam with 100% Guarantee

Free Download Real Questions & Answers **PDF** and **VCE** file from:

<https://www.lead4pass.com/jn0-348.html>

100% Passing Guarantee  
100% Money Back Assurance

Following Questions and Answers are all new published by Juniper  
Official Exam Center

-  **Instant Download** After Purchase
-  **100% Money Back** Guarantee
-  **365 Days** Free Update
-  **800,000+** Satisfied Customers



## QUESTION 1

In which two STP states is a port active and a MAC address learned? (Choose two.)

- A. blocking
- B. forwarding
- C. disabled
- D. learning

Correct Answer: BD

---

## QUESTION 2

Which two statements are correct regarding the root bridge election process when using STP? (Choose two.)

- A. A lower system MAC address is preferred.
- B. A higher bridge priority is preferred.
- C. A lower bridge priority is preferred.
- D. A higher system MAC address is preferred.

Correct Answer: AC

---

## QUESTION 3

What are two characteristics of OSPF ABRs? (Choose two.)

- A. ABRs transmit routing information between the backbone and other areas.
- B. ABRs cannot be part of the backbone and another area at the same time.
- C. ABRs inject routing information from outside the OSPF domain.
- D. ABRs link two OSPF areas.

Correct Answer: AD

---

## QUESTION 4

You have a conference room with an open network port that is used by employees to connect to the network. You are concerned about rogue switches being connected to this port.

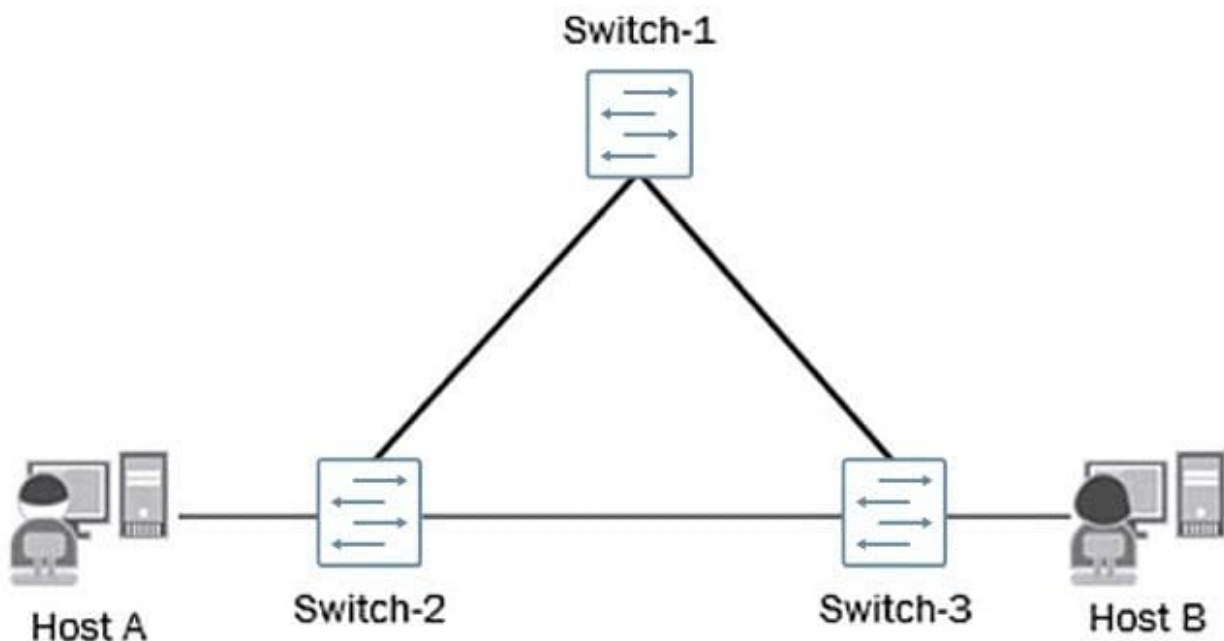
Which two features should you enable on your switch to limit access to this port? (Choose two.)

- A. DHCP snooping
- B. dynamic ARP inspection
- C. MAC limiting
- D. 802.1X

Correct Answer: AB

#### QUESTION 5

Click the Exhibit button.



A number of reports from end users indicate that internal and external communications are intermittent and not reliable. You verified the status of the switch ports and have determined that they are up and operational. You also noticed a very high level of link bandwidth utilization on those same ports. The current topology of the affected environment is shown in the exhibit.

What would be the cause of the reported issues?

- A. A misconfigured interior gateway protocol (IGP).
- B. A lack of a loop-prevention mechanism or protocol.
- C. A lack of port-based ACLs filtering the traffic flows.
- D. A malformed route-based ACL improperly filtering traffic flows.

Correct Answer: B

**QUESTION 6**

Which statement is correct about trunk ports?

- A. Trunk ports must have an IRB assigned to accept VLAN tagged traffic.
- B. By default, trunk ports accept only VLAN tagged traffic.
- C. By default, a trunk port can have only a single VLAN assigned.
- D. trunk ports must have an IRB assigned to accept untagged traffic.

Correct Answer: B

---

**QUESTION 7**

Which three mechanisms are associated with the bridging process? (Choose three.)

- A. blocking
- B. flooding
- C. aging
- D. filtering
- E. listening

Correct Answer: BCD

---

**QUESTION 8**

Click the Exhibit button.

```
[edit]
user@router# show interfaces
...
lo0 {
    unit 0 {
        family inet {
            address 1.1.1.1/32;
        }
        family iso {
            address 49.0001.1921.6800.1001.00;
        }
    }
}
```

Which statement is correct about the ISO NET address shown in the exhibit?

- A. The system identifier is 6800.1001.00
- B. The area identifier is 0001
- C. The authority and format identifier (AFI) is 00
- D. This is not a valid NET address

Correct Answer: B

---

#### QUESTION 9

When configuring firewall filters, which function does the interface-specific parameter enable on an EX Series switch?

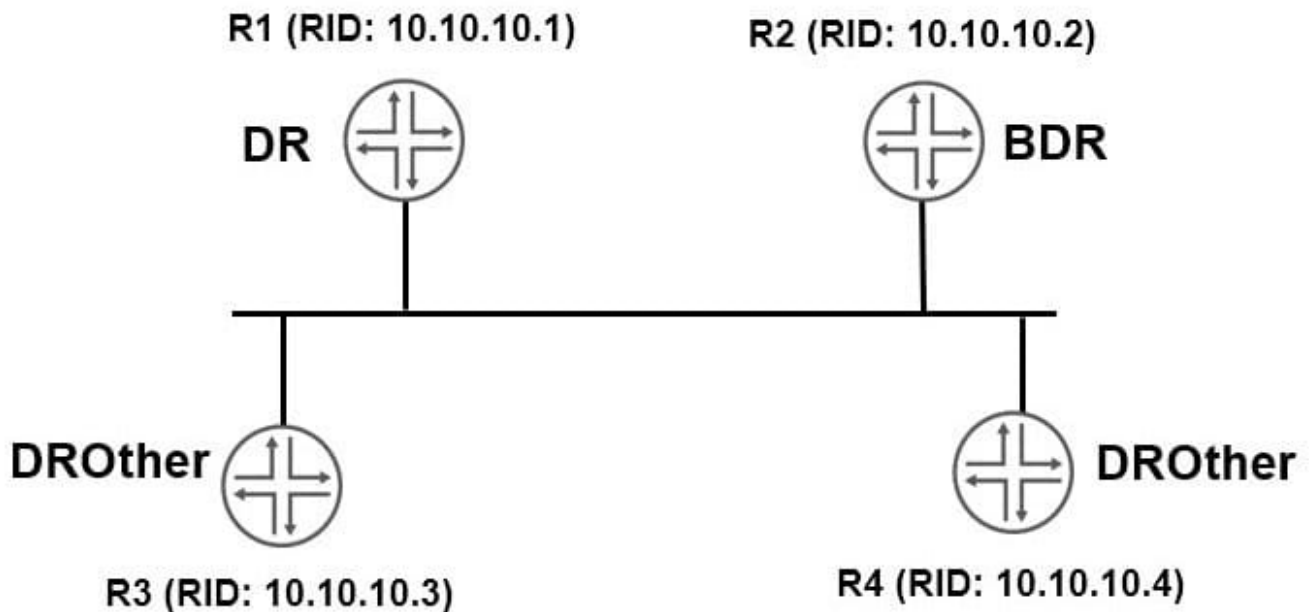
- A. The interface-specific parameter is required to configure port-specific counters.
- B. The interface-specific parameter is required to configure VLAN-specific counters.
- C. The interface-specific parameter is required to configure VLAN-based filters.

D. The interface-specific parameter is required to configure port-based firewall filters.

Correct Answer: A

#### QUESTION 10

Click the Exhibit button.



You have configured OSPF routing as shown in the exhibit. You notice that all interfaces have formed full adjacencies, with the exception of the interfaces connecting R3 and R4 with a status of 2Way.

What is the reason for this status?

- A. The two routers must both be configured as DR routers.
- B. DROther routers will not form a full adjacency with each other.
- C. The two routers must be configured in different areas.
- D. The interface-type is not configured as p2p.

Correct Answer: B

#### QUESTION 11

Click the Exhibit button.

```
[edit protocols isis]
user@router-1# show
level 2 disable;
level 1 wide-metrics-only;
interface all;
```

```
[edit protocols isis]
user@router-2# show
level 1 disable;
interface all;
```

Referring to the exhibit, what will be the IS-IS adjacency result of the configurations?

- A. No IS-IS adjacencies will form.
- B. A level 1 and level 2 IS-IS adjacency will form.
- C. A level 2 IS-IS adjacency will form.
- D. A level 1 IS-IS adjacency will form.

Correct Answer: A

---

## QUESTION 12

Click the Exhibit button.

```
user@router> show route 11.0.0/24
inet.0: 128 destinations, 173 routes (128 active, 0 holddown, 0 hidden)
+ = Active Route, - = Last Active, * = Both

11.0.0.102/32      * [IS-IS/18] 3w0d 01:23:29, metric 15
                  to 11.101.102.2 via ge-0/0/5.0
                  > to 11.111.112.2 via ge-0/0/6.0
11.0.0.108/32      * [IS-IS/18] 3w0d 01:23:29, metric 65
                  > to 11.101.102.2 via ge-0/0/5.0
                  to 11.111.112.2 via ge-0/0/6.0
11.0.0.109/32      * [IS-IS/18] 3w0d 01:23:19, metric 75
                  > to 11.101.102.2 via ge-0/0/5.0
                  to 11.111.112.2 via ge-0/0/6.0
11.0.0.199/32      * [IS-IS/18] 3w0d 01:23:16, metric 65545
                  > to 11.101.105.2 via ge-0/1/1.0

user@router> show route forwarding-table
Routing table: default.inet
Internet:

Destination          Type RtRef Next hop          Type Index      NhRef Netif
11.0.0.102/32        user   1          11.111.112.2      ucst   699         6 ge-
0/0/6.0
11.0.0.108/32        user   0          11.101.102.2     ucst   698         6 ge-
0/0/5.0
                    11.111.112.2     ucst   699         6 ge-
0/0/6.0
11.0.0.109/32        user   0          11.101.102.2     ucst   698         6 ge-
0/0/5.0
```

Referring to the output shown in the exhibit, which statement is correct?

- A. 11.0.0.108/32 is being per-flow load-balanced
- B. 11.0.0.102/32 is being per-packet load-balanced
- C. 11.0.0.102/32 is being per-flow load-balanced
- D. 11.0.0.108/32 is being per-packet load-balanced

Correct Answer: D

### QUESTION 13

What are two interarea OSPF LSA types? (Choose two.)

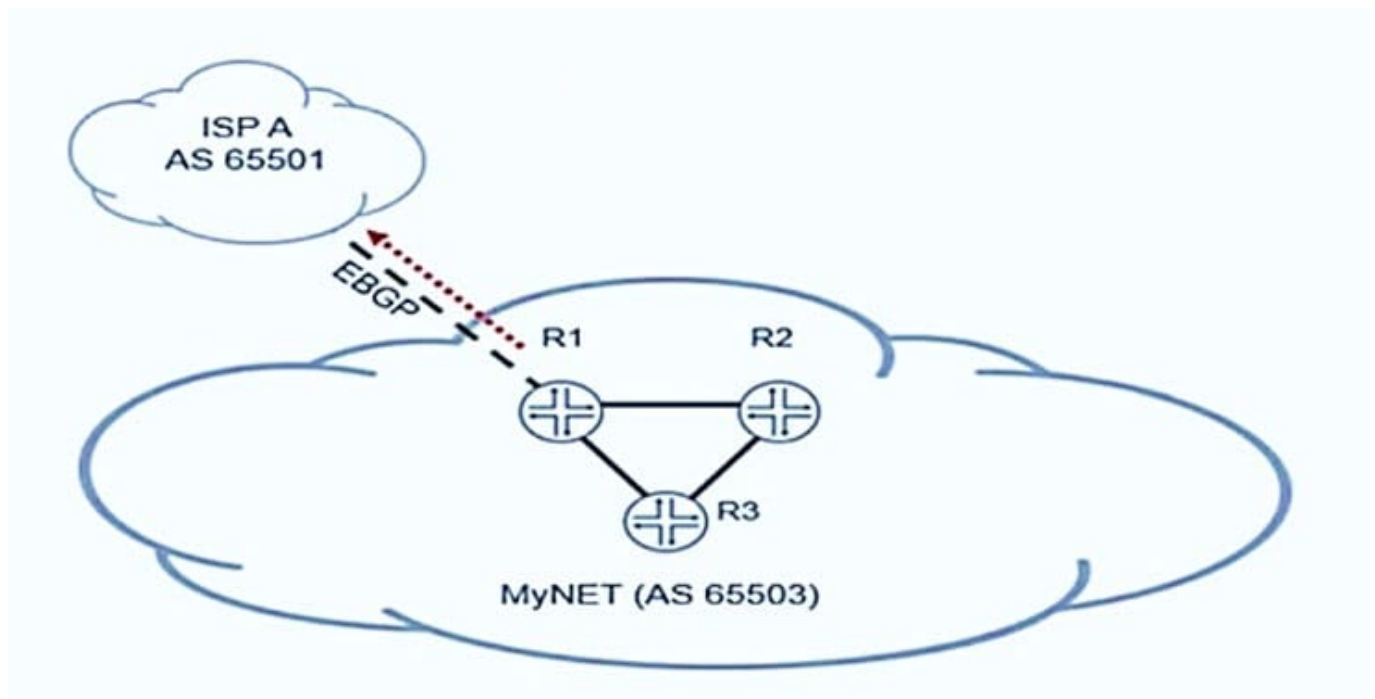


- A. Type 1 router LSAs
- B. Type 3 summary LSAs
- C. Type 4 ASBR summary LSAs
- D. Type 2 network LSAs

Correct Answer: BC

#### QUESTION 14

Click the Exhibit button.



Referring to the exhibit, which two statements about BGP prefixes advertised by R1 to AS 65501 are true? (Choose two.)

- A. R1 will modify the originator ID attribute in prefixes advertised to AS 65501
- B. R1 will modify the AS path attribute in prefixes advertised to AS 65501
- C. R1 will modify the next-hop attribute in prefixes advertised to AS 65501
- D. R1 will modify the cluster list attribute in prefixes advertised to AS 65501

Correct Answer: AC

#### QUESTION 15

How many bytes of overhead are added to a packet traversing a GRE tunnel?

A. 20

B. 24

C. 12

D. 16

Correct Answer: B

[Latest JN0-348 Dumps](#)

[JN0-348 VCE Dumps](#)

[JN0-348 Exam Questions](#)