

JN0-212^{Q&As}

Cloud-Associate (JNCIA-Cloud)

Pass Juniper JN0-212 Exam with 100% Guarantee

Free Download Real Questions & Answers **PDF** and **VCE** file from:

<https://www.leads4pass.com/jn0-212.html>

100% Passing Guarantee
100% Money Back Assurance

Following Questions and Answers are all new published by Juniper
Official Exam Center

-  **Instant Download** After Purchase
-  **100% Money Back** Guarantee
-  **365 Days** Free Update
-  **800,000+** Satisfied Customers



QUESTION 1

Which two statements are true about cSRX firewalls? (Choose two.)

- A. The host OS can be different from the guest OS
- B. The host OS and image OS must match
- C. The cSRX does not use static CPU reservations
- D. The cSRX uses static CPU reservations

Correct Answer: AD

QUESTION 2

Which message type is supported by the Junos Telemetry interface?

- A. GPB
- B. OpenShift
- C. JET
- D. YANG

Correct Answer: A

QUESTION 3

What are two protocols used by NorthStar Controller to discover the network topology? (Choose two)

- A. SNMP
- B. OSPF-TE
- C. NETCONF
- D. BGP-LS

Correct Answer: BD

QUESTION 4

What are two roles of sandboxing in Sky ATP? (Choose two)

- A. To test the operation of security rules
- B. To analyze the behavior of potential security threats

- C. To validate the operation of third-party components
- D. To store infected files for further analysis

Correct Answer: BD

QUESTION 5

You are deploying a Layer 2 underlay network with 2,000 devices and hosts. Which two statements are correct?

- A. Network routing tables can become very large and unmanageable
- B. RPF is used for loop prevention
- C. The MAC tables can become very large and unmanageable
- D. RSTP can be used for loop prevention

Correct Answer: CD

QUESTION 6

What are two reasons to use a vMX over a physical MX Series devices in your deployment? (Choose two)

- A. A vMX provides more routing features.
- B. A vMX accelerates adding new services
- C. A vMX has a lower barrier of entry
- D. A vMX increases analytic capabilities

Correct Answer: BC

QUESTION 7

AppFormix alarm notification are sent to an HTTP server using which format?

- A. plain text
- B. XML
- C. CSV
- D. JSON

Correct Answer: D

QUESTION 8

Which statement is true regarding Layer 3 underlay fabric networks?

- A. Layer 3 underlay fabric networks can only be used across public networks
- B. Layer 3 underlay fabric networks rely on IPsec tunnels to interconnect tenants
- C. Layer 3 underlay fabric networks rely on Layer 2 loop prevention protocols
- D. Layer 3 underlay fabric networks are more scalable than Layer 2 fabric underlay networks

Correct Answer: D

QUESTION 9

What is an advantage of the Junos Telemetry Interface(JTI) over SNMP?

- A. JTI can pull data more frequently
- B. JTI always transfers data over HTTP
- C. JTI never transfers data over UDP
- D. JTI can push data more frequently

Correct Answer: D

QUESTION 10

Which statement is true about Junos Space security director?

- A. Security director is a standalone management platform
- B. Security director is a centralized security policy manager
- C. Security director is an SDN controller
- D. Security director is a network orchestrator

Correct Answer: B

QUESTION 11

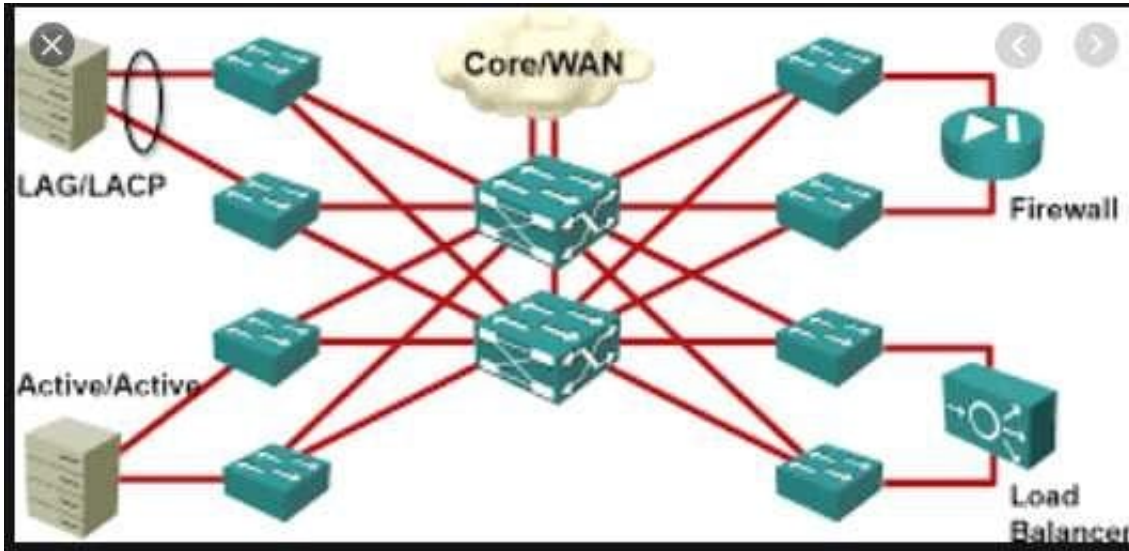
Which two statements are true about an SDN controller? (Choose two.)

- A. An SDN controller automates repetitive tasks in a network
- B. An SDN controller regulates traffic transmission rates in a network
- C. An SDN controller centralizes control and configuration of a network
- D. An SDN controller stores and manages software images

Correct Answer: AC

QUESTION 12

Exhibit: Which type of the topology is shown in the exhibit?



- A. EGP topology
- B. spine-and-leaf topology
- C. tree topology
- D. hub-and-spoke topology

Correct Answer: B

QUESTION 13

You need to control and steer application traffic while maintaining an end-to-end view of the WAN and LAN.

Which Juniper cloud product will satisfy the requirements in this scenario?

- A. Sky ATP
- B. Contrail Service Orchestration
- C. Contrail Cloud
- D. Sky Enterprise

Correct Answer: C

QUESTION 14

You must set up multiple collection points across your network to look for malware and rogue SSH attempts.

What will allow you to accomplish this task?

- A. AppFormix
- B. NorthStar
- C. networking
- D. JATP

Correct Answer: D

QUESTION 15

What are two characteristics of cloud computing? (Choose two.)

- A. customer-owned equipment
- B. measured service
- C. resource pooling
- D. unrestricted public access to all resources

Correct Answer: BC

[JN0-212 Practice Test](#)

[JN0-212 Study Guide](#)

[JN0-212 Exam Questions](#)