

JN0-1302^{Q&As}

Data Center Design Specialist (JNCDS-DC)

Pass Juniper JN0-1302 Exam with 100% Guarantee

Free Download Real Questions & Answers **PDF** and **VCE** file from:

<https://www.leads4pass.com/jn0-1302.html>

100% Passing Guarantee
100% Money Back Assurance

Following Questions and Answers are all new published by Juniper
Official Exam Center

-  **Instant Download** After Purchase
-  **100% Money Back** Guarantee
-  **365 Days** Free Update
-  **800,000+** Satisfied Customers



QUESTION 1

You are designing a Layer 3 Clos fabric architecture for a new data center network infrastructure. You use IBGP for the underlay control plane of the fabric.

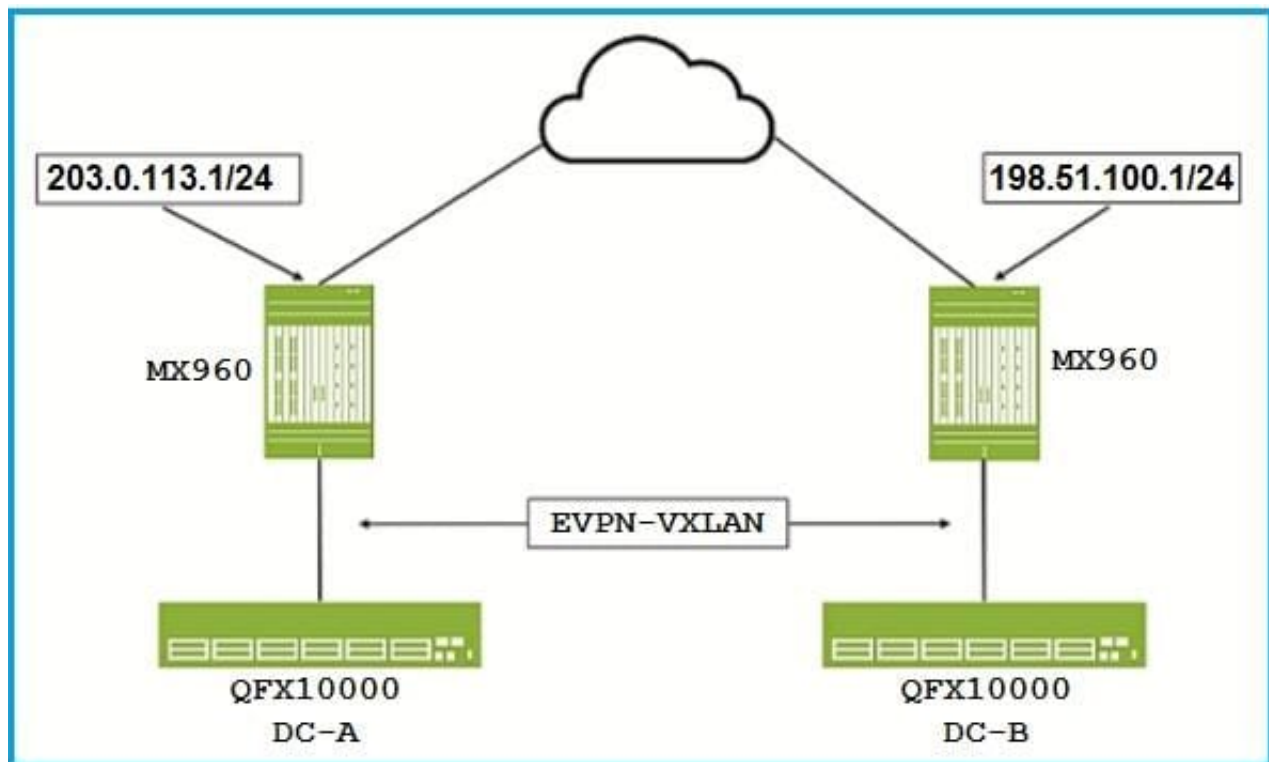
Which devices must support BGP route reflection and BGP ADD-PATH?

- A. spine nodes
- B. leaf nodes
- C. fabric interconnect routers
- D. fabric perimeter routers

Correct Answer: A

QUESTION 2

Click the Exhibit button.



You are designing a Data Center Interconnect to transport VXLAN traffic between DC-A and DC-B.

Which two technologies will allow the MX Series routers to transport the VXLAN packets over the WAN, as shown in the exhibit? (Choose two.)

- A. Layer 2 VPN

B. Layer 3 VPN

C. VPLS

D. IP routing

Correct Answer: BC

QUESTION 3

You are deploying a new data center fabric to support virtualized systems. As part of the deployment, you must monitor server utilization of the hosts.

In this scenario, which Juniper Networks product would satisfy this requirement?

A. Junos Space Network Management Platform

B. Contrail Networking

C. Contrail Insights

D. Junos Space Security Director

Correct Answer: C

QUESTION 4

You are performing a risk assessment on your new data center. You must determine the annual loss expectancy.

Which two calculations must you use in this scenario? (Choose two.)

A. single loss expectancy

B. asset value

C. annual rate of occurrence

D. exposure factor

Correct Answer: AB

QUESTION 5

Which two statements about a three-stage Clos IP Fabric architecture are correct? (Choose two.)

A. Each server-facing interface is always two hops away from any other server-facing interfaces.

B. Each leaf node should have a physical connection to every other leaf node.

C. No physical connectivity exists between spine devices.

D. Each server-facing interface is always one hop away from any other server-facing interfaces.

Correct Answer: CD

QUESTION 6

What are two considerations when designing an IP fabric? (Choose two.)

- A. Every leaf node should have an uplink to every spine node.
- B. Leaf nodes and spine nodes should be the same type of device.
- C. Uplinks from servers to the leaf nodes should be 40GbE links.
- D. All spine nodes should be the same type of device.

Correct Answer: AC

QUESTION 7

Which two Junos components does cRPD contain? (Choose two.)

- A. Kubernetes
- B. RIB
- C. Kernel
- D. MGD

Correct Answer: BD

QUESTION 8

Within a customer's data center, one departmental server is transmitting all of its network traffic marked with an IP precedence value of 6. The ingress switch must change this precedence before forwarding it to the rest of the network.

Which CoS feature would be used to accomplish this task?

- A. multifield classification
- B. rewrite rules
- C. class-based forwarding
- D. behavior aggregate classification

Correct Answer: B

QUESTION 9

You are asked to design security policies based on team membership. Which access control methodology should you use in this scenario?

- A. non-discretionary access control
- B. role-based access control
- C. mandatory access control
- D. discretionary access control

Correct Answer: B

QUESTION 10

What are two overlay protocols that should be considered in your data center design when using an IP fabric underlay? (Choose two.)

- A. OSPF
- B. VXLAN
- C. MPLSoGRE
- D. VPLS

Correct Answer: BD

QUESTION 11

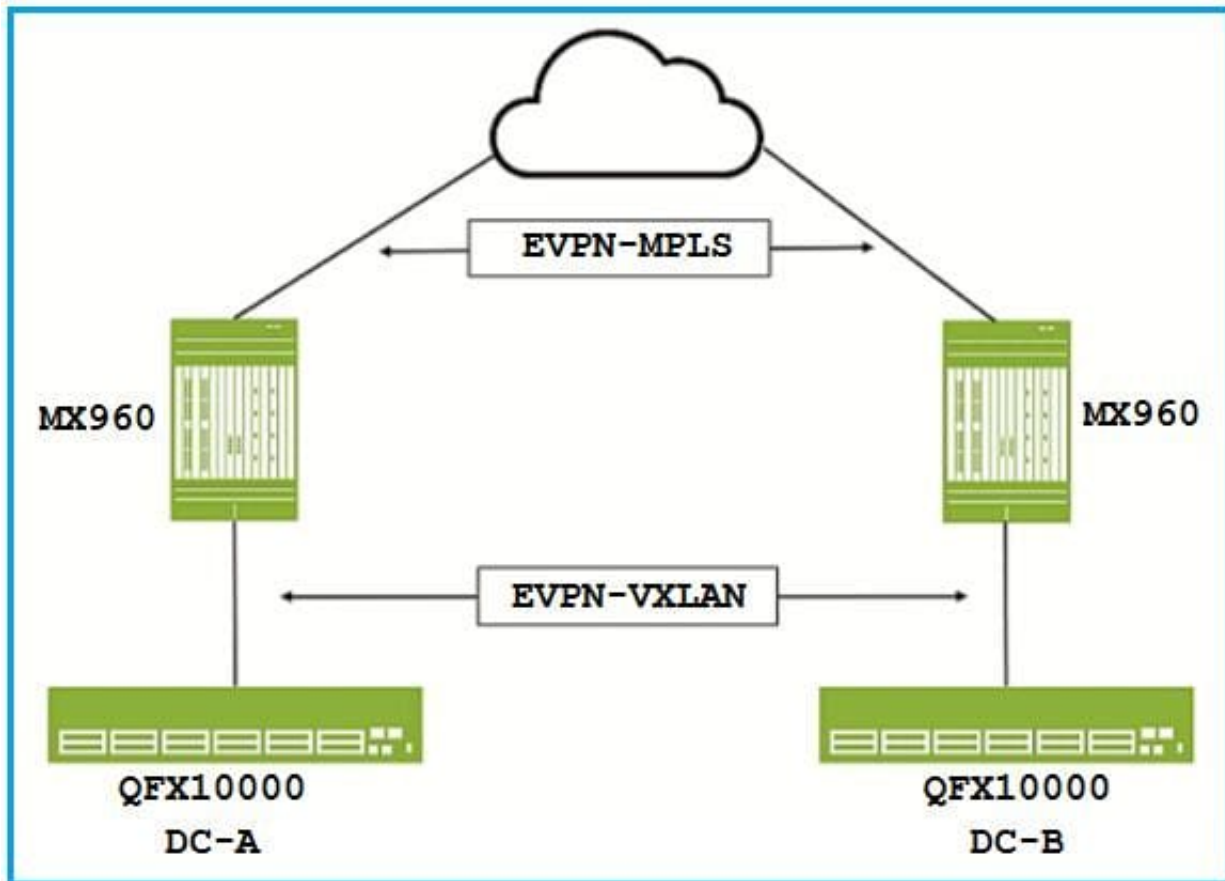
Which two features add NGFW capabilities to a traditional security device? (Choose two.)

- A. IPS
- B. UTM
- C. IP filters
- D. NAT

Correct Answer: BC

QUESTION 12

Click the Exhibit button.



After several design meetings with the WAN team, EVPN MPLS will be deployed as the Data Center Interconnect protocol.

What should be enabled on the MX Series routers to support transporting traffic between DC-A and DC-B as shown in the exhibit?

- A. OVSDB
- B. stitching
- C. fragmentation
- D. CGNAT

Correct Answer: B

QUESTION 13

You are designing an IP fabric ASN scheme using EBGP.

What are two acceptable ranges in this scenario? (Choose two.)

- A. 0 – 512
- B. 100001 – 199999

C. 64512 – 65535

D. 4200000000 – 4294967294

Correct Answer: CD

QUESTION 14

Which statement is correct about end-of-row (EoR) access switch designs when compared to top-of-rack (ToR) designs?

A. Large EoR designs provide more flexibility for connection types.

B. EoR designs require fewer cable connections to all servers.

C. EoR designs typically provide fewer access devices to manage.

D. Large EoR designs minimize the overall cable length required to connect to all servers.

Correct Answer: C

QUESTION 15

You are asked to design an IP fabric that uses the same routing protocol in both the underlay and overlay networks.

Which routing protocol will satisfy this requirement?

A. MPLS

B. BGP

C. IS-IS

D. OSPF

Correct Answer: B

[JN0-1302 PDF Dumps](#)

[JN0-1302 Practice Test](#)

[JN0-1302 Exam Questions](#)