

JN0-105^{Q&As}

Junos - Associate (JNCIA-Junos)

Pass Juniper JN0-105 Exam with 100% Guarantee

Free Download Real Questions & Answers **PDF** and **VCE** file from:

<https://www.leads4pass.com/jn0-105.html>

100% Passing Guarantee
100% Money Back Assurance

Following Questions and Answers are all new published by Juniper
Official Exam Center

- ⚙ **Instant Download** After Purchase
- ⚙ **100% Money Back** Guarantee
- ⚙ **365 Days** Free Update
- ⚙ **800,000+** Satisfied Customers



QUESTION 1

What are two physical interface properties? (Choose two.)

- A. routing protocols
- B. MTU
- C. IP address
- D. MAC address

Correct Answer: BD

QUESTION 2

You need to recover the root password on a Junos router without losing the current configuration settings.

Which three statements describe what you should perform in this scenario? (Choose three.)

- A. Enter and commit the new root password.
- B. Load the factory-default configuration.
- C. Hit the space bar and enter recovery when prompted.
- D. Upgrade the Junos OS to the latest version.
- E. Use a console connection to reboot the device.

Correct Answer: ACE

QUESTION 3

What information would you find using the CLI help command?

- A. message of the day
- B. an explanation for specific system log error messages
- C. hyperlinks for remediation actions
- D. a URL for accessing the technical documentation

Correct Answer: B

QUESTION 4

Which two operating systems are used as the foundation of the Junos OS? (Choose two.)

- A. Ubuntu
- B. CentOS
- C. Linux
- D. FreeBSD

Correct Answer: CD

QUESTION 5

Which two components are included in a transport header? (Choose two.)

- A. source port number
- B. source MAC address
- C. destination MAC address
- D. destination port number

Correct Answer: AD

QUESTION 6

Which two statements describe PFE functions are true?

- A. The PFE implements rate limiting using policers
- B. The PFE stores the master copy of the layer 2 and layer 3 forwarding tables
- C. The PFE provides access to the CLI and Jweb
- D. The PFE stores a local copy of the layer 2 and layer 3 forwarding tables

Correct Answer: AD

QUESTION 7

Which two statements describe the RE on Junos OS devices? (Choose two.)

- A. The RE is considered the control plane.
- B. The RE forwards traffic based on its local copy of the forwarding table.
- C. The RE provides hardware status messages for the PFE
- D. The RE maintains the routing tables.

Correct Answer: AD

Ref: Juniper Networks Partner Solution Development Platform: Architecture of the JUNOS System

"Architecture of the JUNOS System

...

The Routing Engine operates all routing protocols and makes all routing decisions by creating a routing table that includes the best path to each destination. The router writes these paths to a forwarding table in the Routing Engine and then

copies the same data to the forwarding table on the Packet Forwarding Engine (PFE) which actually forwards the packets.

...

The Control Plane

...

The control plane runs on the Routing Engine. Its role is to manage and control the behavior of the device, including the data plane and the services plane.

..."

QUESTION 8

You received a new Junos device and are configuring the system-related settings. You must configure this device for the current date and time on the US West coast. You have set the time zone to America/Los_Angeles, however the time and date did not change.

In this scenario, which two additional actions would satisfy this requirement? (Choose two.)

- A. Configure an NTP server.
- B. Set the date and time setting manually.
- C. Reboot the device.
- D. Configure a DNS server.

Correct Answer: AB

QUESTION 9

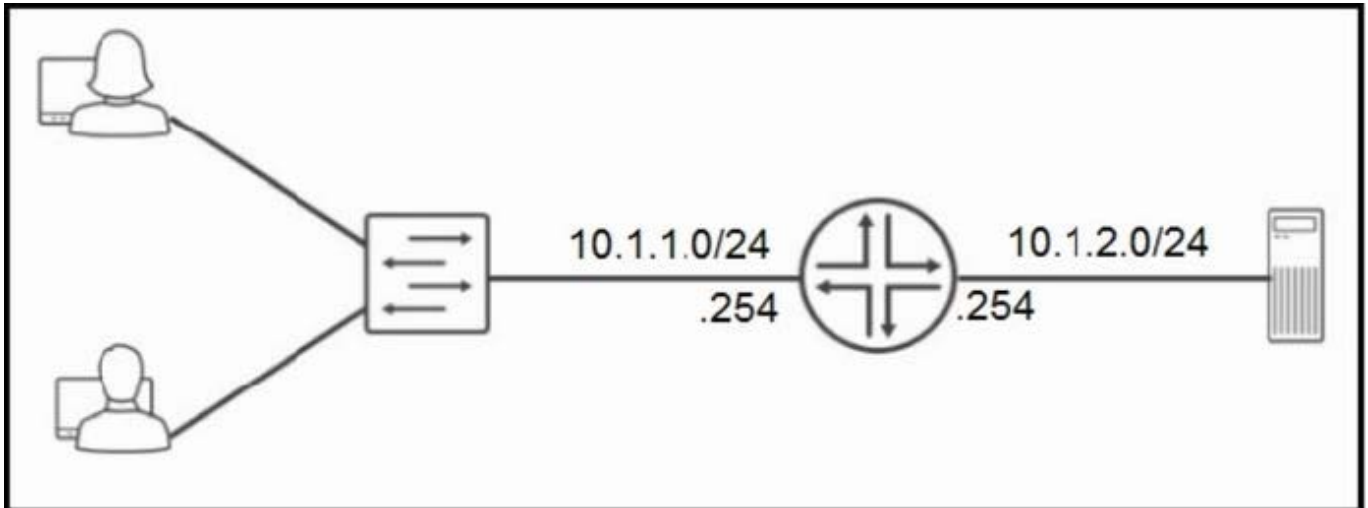
Which two statements apply to the Routing Engine functions? (Choose two.)

- A. It does not process routing updates.
- B. It responds to ping and traceroute commands.
- C. It maintains the routing tables.
- D. It processes the transit traffic.

Correct Answer: BC

QUESTION 10

Click the Exhibit button.



Referring to the exhibit, which routing configuration is required for these two users to access the remote server?

- A. Users and the server require a default gateway.
- B. Trunk ports must be enabled on the switch.
- C. A routing protocol must be enabled on the router.
- D. Users must connect directly to the router.

Correct Answer: A

QUESTION 11

What are two functions of the routing protocol daemon (rpd)? (Choose two.)

- A. It creates forwarding tables.
- B. It provides access to the CLI.
- C. It maintains routing tables.
- D. It generates chassis alarms.

Correct Answer: AC

QUESTION 12

Refer to the exhibit.

```

user@router> show rip statistics

RIPv2 info: port 520; holddown 120s.
    rts learned    rts held down    rqsts dropped    resps dropped
          0          0          0          0
fe-1/2/0.1: 0 routes learned; 0 routes advertised; timeout 180s; update
interval 30s
Counter              Total              Last 5 min              Last minute
-----
Updates Sent              2669              0              0
Triggered Updates Sent      2              0              0
Responses Sent             0              0              0
Bad Messages              0              0              0
RIPv1 Updates Received     0              0              0
RIPv1 Bad Route Entries    0              0              0
RIPv1 Updates Ignored      0              0              0
RIPv2 Updates Received    2675              0              0
RIPv2 Bad Route Entries    0              0              0
RIPv2 Updates Ignored      0              0              0
Authentication Failures    0              11              2
RIP Requests Received      0              0              0
RIP Requests Ignored       0              0              0
none                       0              0              0

```

A customer reports that they have recently lost connectivity to a remote site over a shared architecture.

Referring to the exhibit, what is the problem?

- A. The remote link is down.
- B. The remote router has been powered off.
- C. The authentication method or key has been changed.
- D. The remote site router has been configured for OSPF.

Correct Answer: C

QUESTION 13

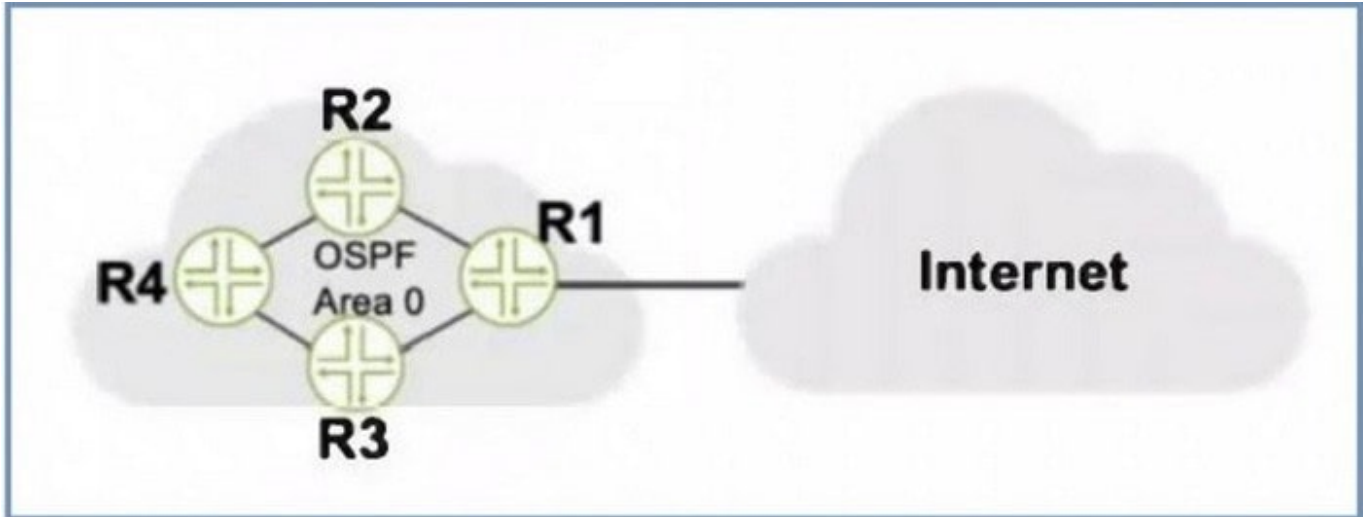
What is an "X" release of the Junos OS?

- A. a standard feature release
- B. a special feature release
- C. a feature velocity release
- D. a feature beta release

Correct Answer: B

QUESTION 14

Click the Exhibit button.



Referring to the exhibit, what should be configured on R1 to advertise a default static route into OSPF?

- A. a firewall filter
- B. a routing policy
- C. a loopback interface
- D. a management interface

Correct Answer: B

QUESTION 15

Which two statements are correct about MAC addresses? (Choose two.)

- A. Switches use the Address Resolution Protocol table to assign MAC addresses to network interface cards in the forwarding frame.
- B. Switches use the destination MAC address to identify the next-hop destination and to change the destination MAC address in the frame.
- C. The source and destination MAC addresses always remains static to the final destination.
- D. The MAC address identifies the physical hardware.

Correct Answer: CD

[Latest JN0-105 Dumps](#)

[JN0-105 PDF Dumps](#)

[JN0-105 Practice Test](#)