

# HPE6-A72<sup>Q&As</sup>

Aruba Certified Switching Associate Dumps

**Pass HP HPE6-A72 Exam with 100% Guarantee**

Free Download Real Questions & Answers **PDF** and **VCE** file from:

<https://www.leads4pass.com/hpe6-a72.html>

100% Passing Guarantee  
100% Money Back Assurance

Following Questions and Answers are all new published by HP Official Exam Center

-  **Instant Download** After Purchase
-  **100% Money Back** Guarantee
-  **365 Days** Free Update
-  **800,000+** Satisfied Customers



### QUESTION 1

What are two methods for remotely managing an Aruba AOS-CX switch? (Choose two.)

- A. SNMPv2c
- B. HTTPS
- C. USB-C console
- D. Telnet
- E. SSH

Correct Answer: BE

### QUESTION 2

Refer to the exhibit

```
Access-1 (config) # show vlan
```

VLAN	Name	Status	Reason	Type	Interfaces
1	DEFAULT_VLAN_1	up	ok	default	1/1/1-1/1/28
50	Engineering	down	no_member_port	static	

What is true regarding VLAN 50 according to the diagram above?

- A. VLAN 50 is part of a switched virtual interface (SVI) that was never routed causing it to be down.
- B. Since VLAN 50 has not been assigned to any enabled physical port, the status is down.
- C. VLAN 50 is assigned only to Trunk ports which is why no ports are listed under interfaces.
- D. VLAN 50 was never added to the vlan-database and therefore is in a down state.

Correct Answer: B

### QUESTION 3

Refer to the exhibit.

```
SW1# show vlan
```

VLAN	Name	Status	Reason	Type	Interfaces
1	DEFAULT_VLAN_1	up	ok	default	<output omitted>
10	Engineering	up	ok	static	1/1/1-1/1/7
20	Guest	up	ok	static	1/1/11-1/1/14

The above command was applied to an Aruba AOS-CX 6300M 24-port switch with 4-port SFP56 uplinks. All ports are set as access switchports.

Which ports carry VLAN 1 traffic?

- A. 1/1/8, 1/1/10, 1/1/5-1/1/24
- B. 1/1/1-1/1/28
- C. 1/1/1-1/1/24
- D. 1/1/8-1/1/10, 1/1/5-1/1/28

Correct Answer: D

## QUESTION 4

DRAG DROP

Match the available stacking feature to the correct AOS-CX switch model. Stacking features may be used more than once.

Select and Place:

### Stacking Feature

VSF

VSX

### Answer Area

Stacking  
Feature

AOS-CX  
Switch Model

6300M

6300F

8320

8400

6400

Correct Answer:

### Stacking Feature

- VSF
- VSX

### Answer Area

Stacking Feature	AOS-CX Switch Model
VSF	6300M
VSF	6300F
VSX	8320
VSX	8400
VSX	6400

#### QUESTION 5

Which Ethernet port combination does the Aruba 5400R ZL2 switch series support?

- A. 10/100 Megabit Ethernet, Gigabit Ethernet, and 100 Gigabit Ethernet
- B. Gigabit Ethernet, 25 Gigabit Ethernet, and 40 Gigabit Ethernet
- C. 10/100 Megabit Ethernet, Gigabit Ethernet, 25 Gigabit Ethernet, and 100 Gigabit Ethernet
- D. 10/100 Megabit Ethernet, Gigabit Ethernet, and 40 Gigabit Ethernet

Correct Answer: D

Reference: [https://www.arubanetworks.com/assets/ds/DS\\_5400RzI2SwitchSeries.pdf](https://www.arubanetworks.com/assets/ds/DS_5400RzI2SwitchSeries.pdf)

#### QUESTION 6

Which statement is correct regarding powering an Aruba Access Point?

- A. PoE or PoE+ is only used with Ethernet that is carried over multi-mode fiber cabling.
- B. Using switchports for this reason is unnecessary, because Aruba Access Points typically use an AC to DC power adapter to draw power.

C. PoE or PoE+ enabled switchports are rarely used given concerns about causing electrical interference, with the data also carried over Ethernet cabling.

D. Most administrators use PoE or PoE+ enabled switchports to provide both Ethernet connectivity and power to the AP.

Correct Answer: D

## QUESTION 7

DRAG DROP

Match each description to the correct management tool for Aruba AOS-CX.

Select and Place:

Management Tools	Answer Area	
	Management Tool	Description
NetEdit	<input type="text"/>	can run as an OVA
Aruba CX Mobile App	<input type="text"/>	requires AOS-CX switches to support HTTPS, SSH, and REST access
	<input type="text"/>	connects to switches via Bluetooth or Wi-Fi
	<input type="text"/>	includes a feature for stacking automation
	<input type="text"/>	supports SNMPv2c to discover third-party devices

Correct Answer:

Management Tools	Answer Area	
	Management Tool	Description
NetEdit	NetEdit	can run as an OVA
Aruba CX Mobile App	NetEdit	requires AOS-CX switches to support HTTPS, SSH, and REST access
	Aruba CX Mobile App	connects to switches via Bluetooth or Wi-Fi
	Aruba CX Mobile App	includes a feature for stacking automation
	NetEdit	supports SNMPv2c to discover third-party devices

## QUESTION 8

Which two port characteristics must match between LAG interfaces? (Choose two.)

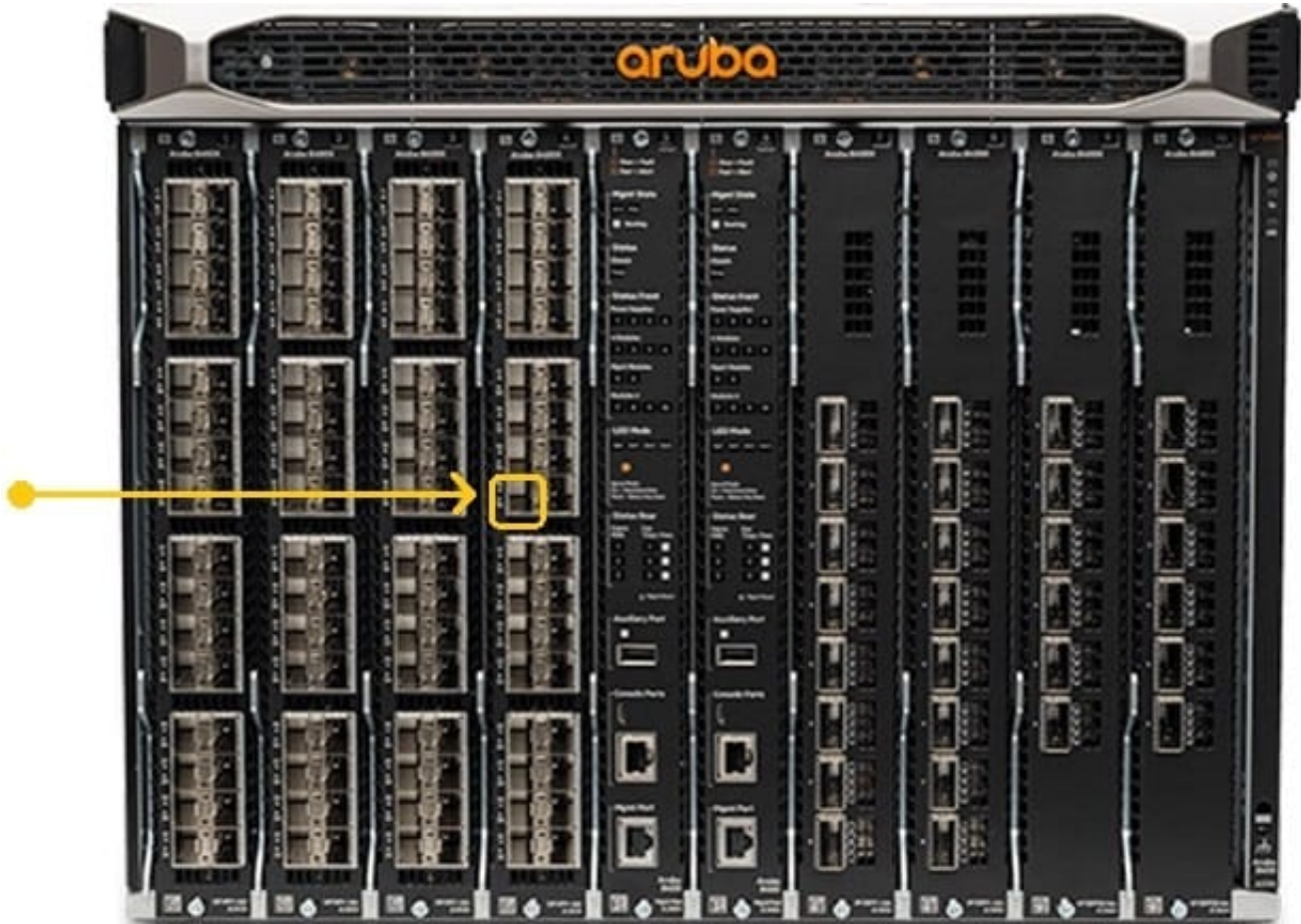
- A. Port number
- B. Duplex
- C. Member ID
- D. Media type
- E. Chassis number

Correct Answer: BD

---

### QUESTION 9

Refer to the exhibit.



The Aruba 8400 in the exhibit is member 2 of a VSX stack.

Which command will enter the interface sub configuration mode for the port, indicated by the orange square?

- A. 8400(config)# interface 2/4/15
- B. 8400(config)# interface 1/7/16
- C. 8400(config)# interface 1/4/15
- D. 8400(config)# interface 2/3/17

Correct Answer: A

---

### QUESTION 10

Which two options are correct regarding the IEEE 802.11ax standard? (Choose two.)

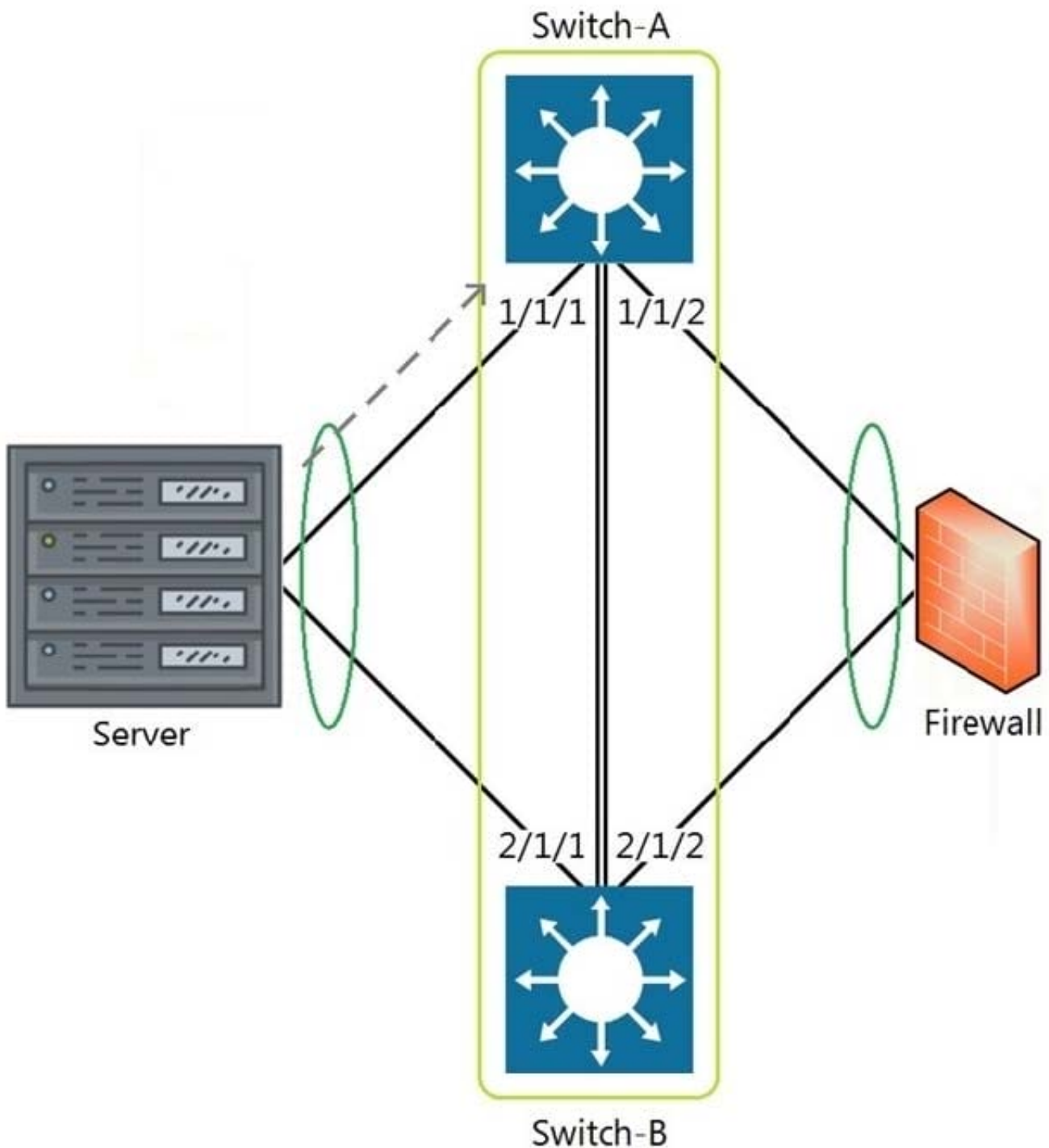
- A. allows transmissions of up to 4.8Gbps
- B. is an emerging satellite connection standard to allow wireless access anywhere in the world
- C. operates only in the 5GHz similar to 802.11ac
- D. operates in both the 2.4GHz and 5GHz radios bands
- E. is the first WLAN standard to no longer use electromagnetic signals to transmit data

Correct Answer: AD

---

**QUESTION 11**

Refer to the exhibit.



The above scenario shows a packet from the Server destined for the Firewall. Switch-A and Switch-B are bundled as VSF stack. The LAG between the VSF stack and the firewall indicates a hash function to forward the packet on port 2/1/2. Which statement is true regarding how Switch-A will forward the packet?

- A. Switch-A will forward the packet on port 1/1/2. VSF will override the typical LAG hash function used for the physical interface selection.
- B. Switch-A will drop the packet. Multi-Chassis lag to multi-chassis lag is not a supported feature of VSF.
- C. Switch-A will encapsulate the packet using GRE to forward to Switch-B in order for the packet to egress on port 2/1/2 per the hash function.



D. Switch-A will forward the packet along the VSF link to Switch-B so that it will egress on port 2/1/2 per the hash function.

Correct Answer: D

## QUESTION 12

Refer to the exhibit.



You are in the process of configuring VSF between Access-1 and Access-2. Access-1 has been configured as the VSF Master.

What is a valid configuration for Access-2 to join the VSF stack?

- A. Access-2# configure Access-2(config)# vsf member 1 Access-2(config)# vsf renumber-to 2 Access-2(vsf-member-1)# link 2 2/1/28 Access-2(vsf-member-1)# exit This will save the VSF configuration and reboot the switch. Do you want to continue (y/n)? y
- B. Access-2# configure Access-2(config)# vsf member 2 Access-2(vsf-member-1)# link 2 1/1/28 Access-2(vsf-member-1)# exit This will save the VSF configuration and reboot the switch. Do you want to continue (y/n)? y
- C. Access-2# configure Access-2(config)# vsf member 2 Access-2(vsf-member-1)# link 1 1/1/28 Access-2(vsf-member-1)# exit This will save the VSF configuration and reboot the switch. Do you want to continue (y/n)? y
- D. Access-2# configure Access-2(config)# vsf member 1 Access-2(vsf-member-1)# link 1 1/1/28 Access-2(vsf-member-1)# exit Access-2(config)# vsf renumber-to 2 This will save the VSF configuration and reboot the switch. Do you want to continue (y/n)? y

Correct Answer: C

## QUESTION 13

Refer to the exhibit.

```
Switch-1(config)# show spanning-tree | exclude Disabled
```

←---- output omitted ----→

Port	Role	State	Cost	Priority	Type
1/1/1	Designated	Forwarding	4000	128	point_to_point
Lag1		Forwarding	2000	64	point_to_point
1/1/2	Designated	Forwarding	10000	128	point_to_point
1/1/3	Designated	Forwarding	20000	128	point_to_point

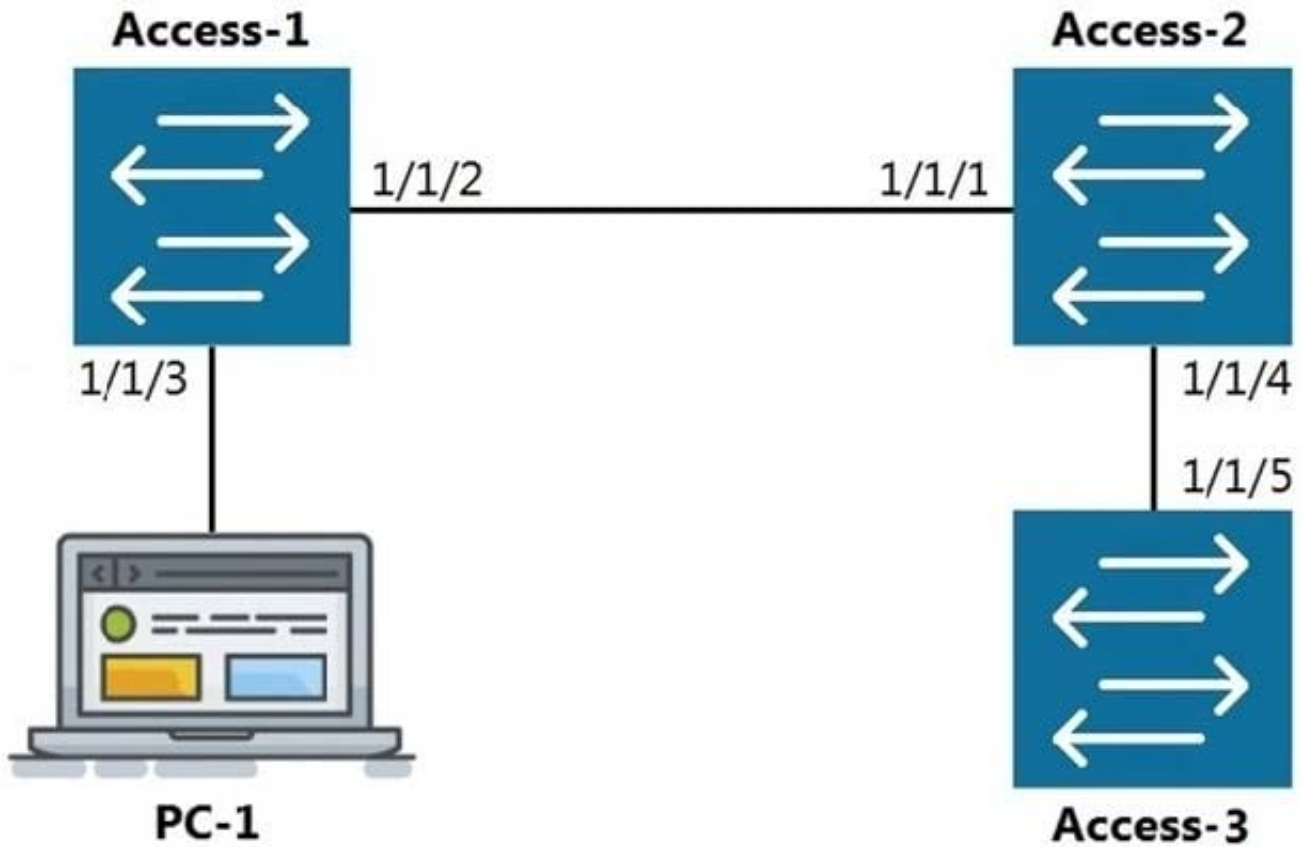
Switch-1 is not the root bridge. The ports shown are all the connected pointtopoint interfaces. What Role (hidden by the blue rectangle) will be assigned to the Lag 1 interface?

- A. Alternate
- B. Backup
- C. Root
- D. Designated

Correct Answer: C

#### QUESTION 14

Refer to the exhibit.



LLDP

The command `show LLDP neighbor-info` gets typed into Access-1. All switches are Aruba OS-CX switches.

What is the output of this command?

- A.

LOCAL-PORT	CHASSIS-ID	PORT-ID	PORT-DESC	TTL	SYS-NAME
1/1/1	90:20:c2:bc:ed:00	1/1/2	1/1/2	120	Access-2
1/1/5	90:20:c2:bc:ef:00	1/1/2	1/1/2	120	Access-3
- B.

LOCAL-PORT	CHASSIS-ID	PORT-ID	PORT-DESC	TTL	SYS-NAME
1/1/1	90:20:c2:bc:ed:00	1/1/2	1/1/2	120	Access-2
- C.

LOCAL-PORT	CHASSIS-ID	PORT-ID	PORT-DESC	TTL	SYS-NAME
1/1/2	90:20:c2:bc:ed:00	1/1/1	1/1/1	120	Access-2
1/1/2	90:20:c2:bc:ef:00	1/1/5	1/1/5	120	Access-3
- D.

LOCAL-PORT	CHASSIS-ID	PORT-ID	PORT-DESC	TTL	SYS-NAME
1/1/2	90:20:c2:bc:ed:00	1/1/1	1/1/1	120	Access-2

A. Option A

B. Option B

C. Option C

D. Option D

Correct Answer: D

**QUESTION 15**

With what other technology does Half Duplex communication closely match?

- A. a pair of fiber optic strands allowing transmit on one and receive on the other at the same time
- B. a mobile phone call
- C. point-to-point connections between two switches allowing concurrent transmit and receive
- D. CB radio using push-to-talk

Correct Answer: D

[Latest HPE6-A72 Dumps](#)

[HPE6-A72 VCE Dumps](#)

[HPE6-A72 Exam Questions](#)