

# HPE0-S58<sup>Q&As</sup>

Implementing HPE Composable Infrastructure Solutions

## Pass HP HPE0-S58 Exam with 100% Guarantee

Free Download Real Questions & Answers **PDF** and **VCE** file from:

<https://www.leads4pass.com/hpe0-s58.html>

100% Passing Guarantee  
100% Money Back Assurance

Following Questions and Answers are all new published by HP Official Exam Center

- ⚙️ **Instant Download** After Purchase
- ⚙️ **100% Money Back** Guarantee
- ⚙️ **365 Days** Free Update
- ⚙️ **800,000+** Satisfied Customers



**QUESTION 1**

Which HPE Synergy D3940 storage module configuration is valid?

- A. a single RAID set to be shared across the SAS fabric to multiple compute nodes as a virtualization host datastore
- B. maximum of three HPE Synergy D3940 storage modules per frame to be used by any compute module within the management ring
- C. any number of the drives from storage module to be mapped to any single compute node
- D. a pair of disks to house Composer backups and Synergy firmware bundles

Correct Answer: A

---

**QUESTION 2**

A customer needs to upgrade an HPE Synergy 12000 frame with an HPE Virtual Connect SE 32Gb Fibre Channel (FC) Module.

Which steps must the integrator take to install the upgrade?

- A. Modify the Synergy 40Gb F8 Logical Interconnect Group (LIG), and add the FC uplink set and storage networks.
- B. Create one redundant Logical Interconnect Group (LIG) with two uplink sets, one for SAN-A and one for SAN-B.
- C. Create two new Logical Interconnect Groups (LIGs) that are non-redundant Side-A/Side-B, one for SAN-A and one for SAN-B.
- D. Edit the Enclosure Group and specify HPE Virtual Connect SE 32Gb FC Module in interconnect bays 1 and 2.

Correct Answer: A

---

**QUESTION 3**

In a 3-frame HPE Synergy environment, how should an integrator place the image Streamer modules to allow for redundancy to all of the management connections?

- A. one Image Streamer module in frame 2, and a second Image Streamer Module in frame 3 (2 total)
- B. two Image Streamer modules in frame 2, and two Image Streamer modules in frame 3 (4 total)
- C. one Image Streamer module in each Synergy frame (3 total)
- D. two Image Streamer modules in frame 1 (2 total)

Correct Answer: B

Reference: [https://www.karma-group.ru/upload/iblock/2be/synergy\\_image\\_streamer.pdf](https://www.karma-group.ru/upload/iblock/2be/synergy_image_streamer.pdf) (page 7)

---

**QUESTION 4**

A customer is planning to deploy OneView for vCenter Server to improve management procedures for growing virtualization environment. The customer is concerned about resources required by HPE OneView for vCenter Server. Which statement about deploying HPE OneView for vCenter Server is true?

- A. It is deployed as an application on the Windows Server machine with at least 48GB of memory.
- B. It is deployed as a part of the HPE Composer installation.
- C. It is deployed as a virtual machine on the supported hypervisor.
- D. It can only be deployed if HPE Global Dashboard is already installed.

Correct Answer: C

Reference: [https://support.hpe.com/hpsc/doc/public/display?docId=a00047122en\\_us](https://support.hpe.com/hpsc/doc/public/display?docId=a00047122en_us)

---

**QUESTION 5**

An integrator prepares deployment documents with the list of all the hardware and software components. The integrator also needs a list of all infrastructure services deployed, with the functionality described.

Which services are provided by the vCenter Server component and should be placed in the report? (Choose two.)

- A. Auto Deploy
- B. Single Sign-On
- C. Update Manager
- D. Lookup Service
- E. Certificate Authority

Correct Answer: CD

---

**QUESTION 6**

A customer has a five-frame Synergy deployment with redundant Composers. An integrator needs to install Image Streamer. What must the integrator consider before taking the planned action?

- A. Image Streamer requires the use of the MGMT port from both of the FLMs in the frame where the Image Streamer appliance is installed
- B. The frame where the Image Streamer is being installed must not contain an Interconnect Module
- C. The location of the Image Streamer must be manually modified through the Composer
- D. A connection to the management network must be established to an FLM in the same frame that houses the Image Streamer

Correct Answer: D

---

**QUESTION 7**

A customer is unable to boot to a 3.5TB volume created and presented to a compute node. What is likely preventing the boot?

- A. The system is set to UEFI instead of Legacy Boot mode
- B. The system is set to Legacy Boot mode instead of UEFI
- C. Boot volumes larger than 2.2TB are not supported on Synergy
- D. Boot volumes larger than 3TB are not supported on HPE Synergy

Correct Answer: B

Reference: [https://support.hpe.com/hpsc/doc/public/display?docId=emr\\_na-c05351907](https://support.hpe.com/hpsc/doc/public/display?docId=emr_na-c05351907)

---

**QUESTION 8**

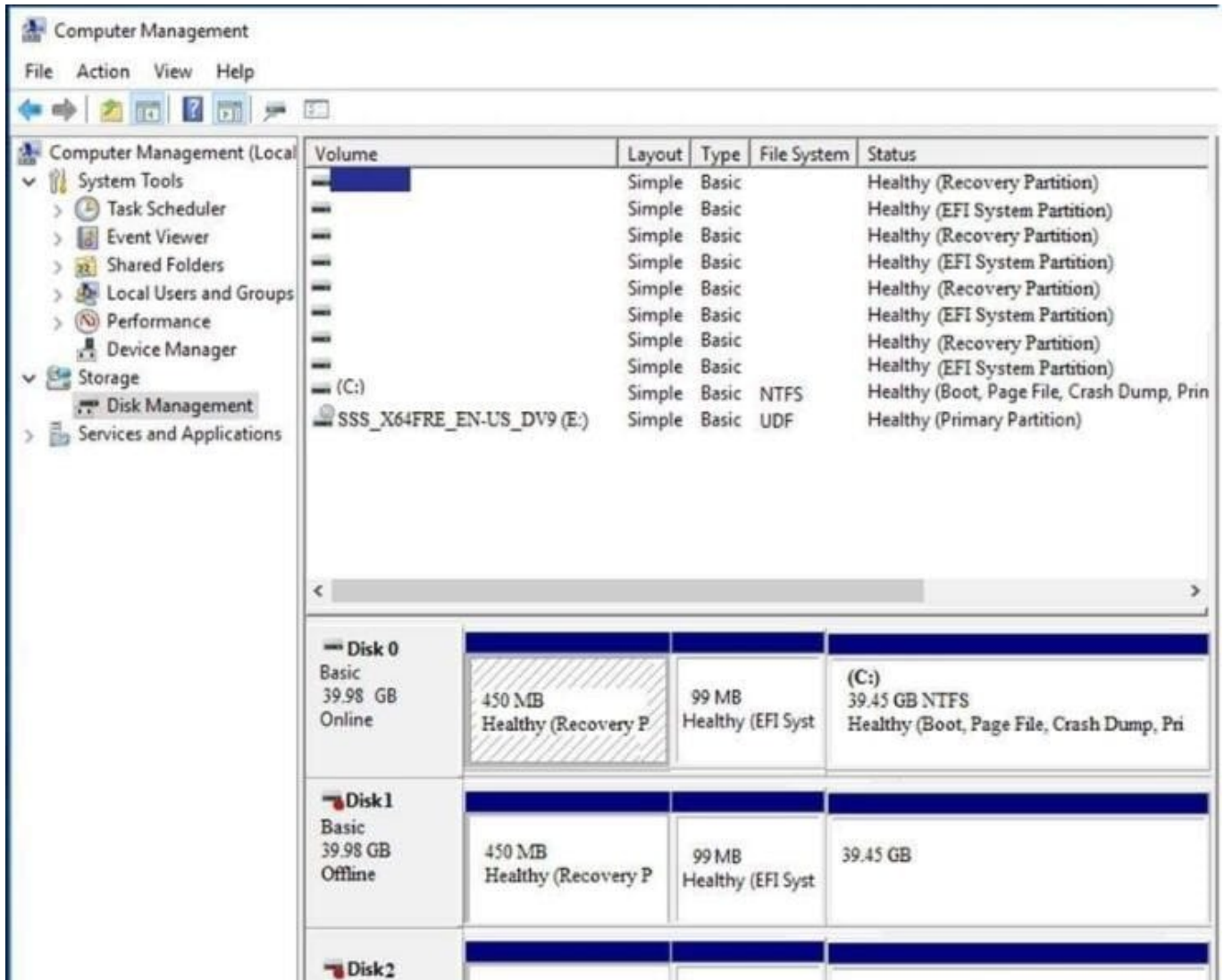
A customer's Synergy configuration requires HPE Synergy 12Gb SAS Connection Modules in interconnect module bays 1 and 4, and HPE Virtual Connect SE 40Gb F8 modules for HPE Synergy ICMs in interconnect module bays 2 and 5. What must the integrator verify in the HPE Synergy 480 Gen10 Compute Module configuration to validate this solution configuration? (Choose two.)

- A. SAS controllers have HPE Compute Module Smart Array P542D SAS Cables
- B. Both processor slots are populated
- C. HPE Synergy 2820C 10Gb Converged Network Adapter is in Mezzanine 2
- D. A minimum of 128Gb of RAM is on each server
- E. HPE Smart Array P542D/2GB FBWC 12Gb Mezzanine SAS Controller is in Mezzanine 3

Correct Answer: BC

---

**QUESTION 9**



A customer connected a logical drive from 3PAR StoreServ array to the Windows Server 2016 as a data drive.

The customer complains that in the Disk Manager, they can see the same volume four times.

What can an integrator do to fix this issue?

- A. Delete any three logical drives and leave one of them
- B. Go to the SSMC and enable multipathing option for this volume
- C. Create an NTFS partition on any logical drive to consolidate the logical drives
- D. Install an MPIO component to hide redundant paths to the volume

Correct Answer: B

**QUESTION 10**

Refer to the exhibit.

OneView ▾ StorageSystemName:h4157		
Storage Pools 5 All statuses ▾ All labels ▾ All resources ▾		
● Name	▲ Storage System	State
● FC_r6	h4157	Discovered
● fs_cpg	h4157	Discovered
● NL_r6	h4157	Discovered
● Team_1_CPG	h4157	Managed
● Team_2_Tune	h4157	Managed

An integrator needs to create a volume on the FC\_r6 CPG using HPE Composer, but the CPG is not available for provisioning. The integrator checked the Storage Pools section, and the CPG is visible. What must the integrator do to enable volume provisioning on this CPG?

- A. Select this CPG in the HPE Composer, select Edit from the Action menu, and change the CPG state to Managed
- B. Navigate to the Storage Systems section in the HPE Composer, select the 3PAR array, and re-import required CPG
- C. Login to the SSMC and add the HPE Composer certificate for the CPGs which are in the Discovered state
- D. Login to the HPE SSMC and remove the read only parameter for this CPG

Correct Answer: D

### QUESTION 11

A customer wants to expand their existing cluster using the Grow Cluster functionality from OneView for vCenter Server. Which OS build plan managed by HPE OneView for vCenter Server can the customer use?

- A. ICsp-Based Deployment
- B. iLO Federation-Based Deployment
- C. Image Streamer-Based Deployment
- D. PXE-Based Deployment

Correct Answer: A

Reference: [https://support.hpe.com/hpsc/doc/public/display?docId=emr\\_na-a00036306en\\_usanddocLocale=en\\_US](https://support.hpe.com/hpsc/doc/public/display?docId=emr_na-a00036306en_usanddocLocale=en_US)

**QUESTION 12**

Using a two-port FLM, what is the minimum number of frames needed to implement a solution that includes redundant Composers and Image Streamers?

- A. 1
- B. 2
- C. 3
- D. 4

Correct Answer: C

Reference: <https://h20195.www2.hpe.com/v2/GetPDF.aspx/c04815217.pdf> (18)

---

**QUESTION 13**

Which technology used in HPE SimpliVity allows a reduction in storage consumption?

- A. trunking
- B. hashing
- C. consolidation
- D. compression

Correct Answer: D

Reference: <https://h20195.www2.hpe.com/V2/getpdf.aspx/a00026278enw.pdf>

---

**QUESTION 14**

Which storage solution can be used for volume provisioning using HPE Composer?

- A. MSA 2040
- B. HPE StoreEasy 1560
- C. HPE 3PAR StoreServ
- D. HPE XP7 Storage

Correct Answer: C

Reference: [https://www.karma-group.ru/upload/iblock/30b/hpe\\_synergy\\_composer.pdf](https://www.karma-group.ru/upload/iblock/30b/hpe_synergy_composer.pdf)

---

## QUESTION 15

A customer wants to boot Synergy compute nodes from external LUN located on HPE MSA 2050 SAN Storage. What should an integrator consider when implementing this configuration?

- A. Using HPE Composer, only volumes up to 4TB can be created on the MSA2050
- B. Additional integration license must be purchased for the MSA2050 and Synergy platforms
- C. Automated zoning functionality cannot be used, as MSA2050 is not supported in HPE Composer
- D. MSA2050 must be imported first to the HPE Composer before volume presentation can be done

Correct Answer: B

[HPE0-S58 Practice Test](#)

[HPE0-S58 Study Guide](#)

[HPE0-S58 Braindumps](#)