

HP2-Z34^{Q&As}

Building HP FlexFabric Data Centers

Pass HP HP2-Z34 Exam with 100% Guarantee

Free Download Real Questions & Answers **PDF** and **VCE** file from:

<https://www.leads4pass.com/hp2-z34.html>

100% Passing Guarantee
100% Money Back Assurance

Following Questions and Answers are all new published by HP Official Exam Center

- ⚙ **Instant Download** After Purchase
- ⚙ **100% Money Back** Guarantee
- ⚙ **365 Days** Free Update
- ⚙ **800,000+** Satisfied Customers



QUESTION 1

An HP Comware switch port is being connected to a server Converged Network Adaptor (CNA). The CNA and the switch port need to communicate about parameters for various priority flow control (PFC) and bandwidth control mechanisms. How does the administrator enable these communications?

- A. Enable PFC globally and then enable PFC on the switch port
- B. Enable the Fibre Channel (FC) fabric port function on the switch port and then set the port as an F-port.
- C. Enable Ethernet Virtual Bridging (EVB) on the switch port.
- D. Enable LLDP globally and then enable Data Center Bridging eXchange (DCBX) TLVs on the switch port

Correct Answer: D

QUESTION 2

Refer to the exhibit An HP Comware switch is configured to support FCoE in Fibre Channel Forwarder (FCF) mode. Server1 should be able to discover storage target1 and target2. but not target3. Assume that the zone-aliases have been configured to reference the FC devices correctly

```
zone name 1
  member zone-alias server1
zone name 2
  member zone-alias target1
zone name 3
  member zone-alias target2
zone name 4
  member zone-alias target3
zone name 5
  member zone-alias target1
  member zone-alias target2
zone name 6
  member zone-alias server1
  member zone-alias target1
  member zone-alias target2
```

Which zone(s) should be added to the active zoneset?

- A. zone 1, zone 2, and zone 3
- B. zone 1 and zone 5
- C. zone 4
- D. zone 6

Correct Answer: D

QUESTION 3

To support FCoE traffic, a switch port needs to use Application TLVs to communicate application priority information to a Converged Network Adapter (CNA). The setup process includes the configuration of an Access Control List (ACL). What is a valid ACL?

- A. Advanced ACL that selects traffic by UDP source port
- B. Advanced ACL that selects traffic by TCP source port
- C. Standard ACL that selects traffic by source IP address
- D. Ethernet ACL that selects traffic by Ether type

Correct Answer: B

QUESTION 4

How does a non-hierarchical VPLS Martini solution prevent looping for broadcasts and multicasts?

- A. PEs use a hub and spoke topology, relying on the hub to distribute broadcasts and multicasts.
- B. PEs use split horizon operations, never forwarding a packet received on a pseudo wire (PW) over another PW.
- C. PEs implement Shortest Path Bridging (SPB) VLAN Mode (SPBV).
- D. PEs implement a version of Spanning Tree Protocol (STP), preferably Multiple STP (MSTP).

Correct Answer: B

QUESTION 5

Refer to the exhibit An administrator is setting up MPLS Layer 2 VPN connections between several customer sites and wants to send traffic that arrives on G1/0/1 with VLAN tag 102 to Site 2. Traffic with a different tag will be sent to a different site. How should the administrator implement this?

Exhibit 1

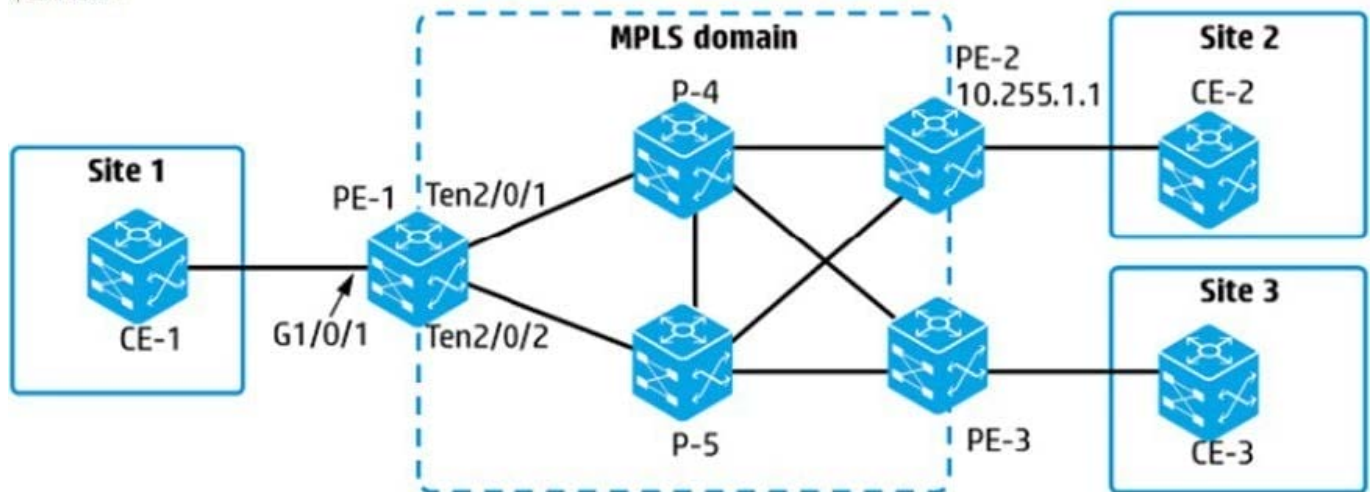


Exhibit 2

```
interface GigabitEthernet 1/0/1
 service-instance 1
 xconnect-group Site1toSite2
 ac interface GigabitEthernet1/0/1 service-instance 1
 peer 10.255.1.1 pw-id 2
```

- A. Remove service-instance1 from interface G1/0/1 and add it to VLAN 102
- B. Set the encapsulation for service-instance 1 to S-VLAN 102
- C. Set the peer PW outer label to 102 in xconnect-group Site1toSite2.
- D. Set the peer PW inner label to 102 in xconnect-group Site1toSite2.

Correct Answer: B

QUESTION 6

Refer to the exhibit A VSAN is being set up on an HP Comware switch that will connect to server Converged Network Adapters (CNAs) and storage systems The administrator is checking the configuration of the VSAN with display commands The exhibit shows the results.

```
<Switch> display fc domain vsan 2
Domain Information of VSAN 2:

Running table information:
  state: Stable
  Switch WWN: 10:00:cc:3e:5f:6d:fc:b1
  Fabric name: 10:00:cc:3e:5f:6d:fc:b1
  Priority: 128
  Domain ID: 10
Configuration information:
  Domain configure: Enable
  Domain auto-reconfigure: Disabled
  Fabric name: 10:00:cc:3e:5f:6d:fc:b1
  Priority: 128
  Domain ID: 10 (preferred)
Principal switch running time information:
  Priority: 128

<Switch> display zone status vsan 2
VSAN 2:
Mode: basic
Default zone: deny
Distribute: active only
Hard-zoning: enabled
Full zoning database
  Zonesets: 0, Zones: 0, Zone-aliases: 0
Status: free
```

What is a potential issue?

- A. The current zoning configuration does not permit any communication.
- B. The fabric name has been set to the same ID as the switch WWN. which causes conflicts.
- C. The distribute mode for zones has been set to active only, which can cause issues with redundancy.
- D. The domain ID has been set manually to a preferred ID, but this switch does not have the highest priority

Correct Answer: C

QUESTION 7

A company merger created a situation in which some network segments are using overlapping IP addresses. Administrators want to keep the overlapping addresses and isolate the segments. A core router connects to devices in both segments and routes some traffic for both.

What allows this router to route the traffic without conflict?

- A. VPLS
- B. Provider Backbone Bridging (PBB)

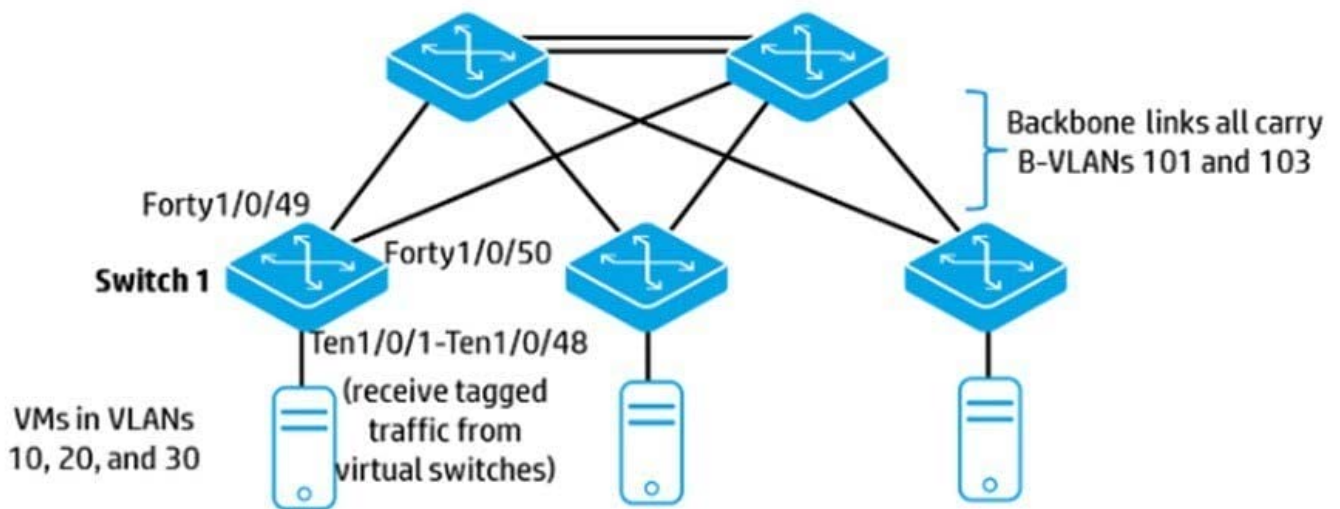
C. Multi-VPN-Instance CE (MCE)

D. EVI

Correct Answer: C

QUESTION 8

Refer to the exhibit These switches form an SPBM region. What is required for load balancing to occur across the links between these switches?



A. IS-IS cost for each backbone link must be the same (with IS-IS ECMP enabled).

B. B-VLANs must be configured to use different ECT algorithms.

C. Tandem multicast mode must be enabled globally

D. B-VLANs must be assigned to different MSTP instances.

Correct Answer: C

QUESTION 9

An administrator configures an HP Comware switch to support FCoE in Fibre Channel Forwarder (FCF) mode. A switch interface connects to a server Converged Network Adapter (CNA) which sends normal data and storage traffic. What is the correct configuration for this port?

A. FC port in NP mode

B. bound to a VFC interface, which is in F mode

C. bound to a VFC interface, which is in E mode

D. FC port in F mode

Correct Answer: A

QUESTION 10

What is the relationship between a Forwarding Equivalence Class (FEC) and the MPLS label that a Label Switching Router (LSR) advertises for that FEC?

- A. An LSR assigns the same label to FECs with the same best next hop; labels remain constant across the MPLS domain
- B. The LSR assigns a unique label to each FEC, but labels assigned by different LSRs do not necessarily match.
- C. The LSR assigns a unique label to each FEC, and that label remains constant across the MPLS domain
- D. An LSR assigns the same label to FECs with the same best next hop; labels assigned by different LSRs do not necessarily match

Correct Answer: D

[HP2-Z34 VCE Dumps](#)

[HP2-Z34 Practice Test](#)

[HP2-Z34 Exam Questions](#)