

HP2-Z30^{Q&As}

Fast Track - Applying HP FlexNetwork Fundamentals

Pass HP HP2-Z30 Exam with 100% Guarantee

Free Download Real Questions & Answers **PDF** and **VCE** file from:

<https://www.leads4pass.com/hp2-z30.html>

100% Passing Guarantee
100% Money Back Assurance

Following Questions and Answers are all new published by HP Official Exam Center

- ⚙ **Instant Download** After Purchase
- ⚙ **100% Money Back** Guarantee
- ⚙ **365 Days** Free Update
- ⚙ **800,000+** Satisfied Customers



QUESTION 1

Refer to the topology output.

```
<Comware> display irf topology
```

Topology Info					
Switch	Link	IRF-Port1 neighbor	Link	IRF-Port2 neighbor	Belong To
1	DOWN	3	UP	2	000f-cbb8-1a82
2	UP	1	UP	3	000f-cbb8-1a8b
*+3	UP	2	DOWN	1	000f-cbb8-1f82

Based on this topology, which statements are true? (Select two) A. The topology is functioning normally

B. This is a daisy chain topology

C. This is a ring topology

D. A break exists in the topology

E. There is a split stack

Correct Answer: CD

QUESTION 2

Refer to the HP Comware configuration. interface vlan 1 ip address 10.1.1.1 255.255.255.0 quit interface vlan 2 ip address 10.1.2.1 255.255.255.0 quit interface loopback 1

ip address 1.1.1.1 255.255.255.255 quit router-id 1.1.1.1 area 0 network 1.0.0.0 0.255.255.255 network 10.1.1.0 0.255.255.255 The network administrator set up VLAN 2 as a management VLAN. This VLAN should not be included in the OSPF routing process. Now only directly connected network administrators in VLAN 2 can manage the switch. How should the network administrator solve this problem?

A. Define the management-vlan 2 command.

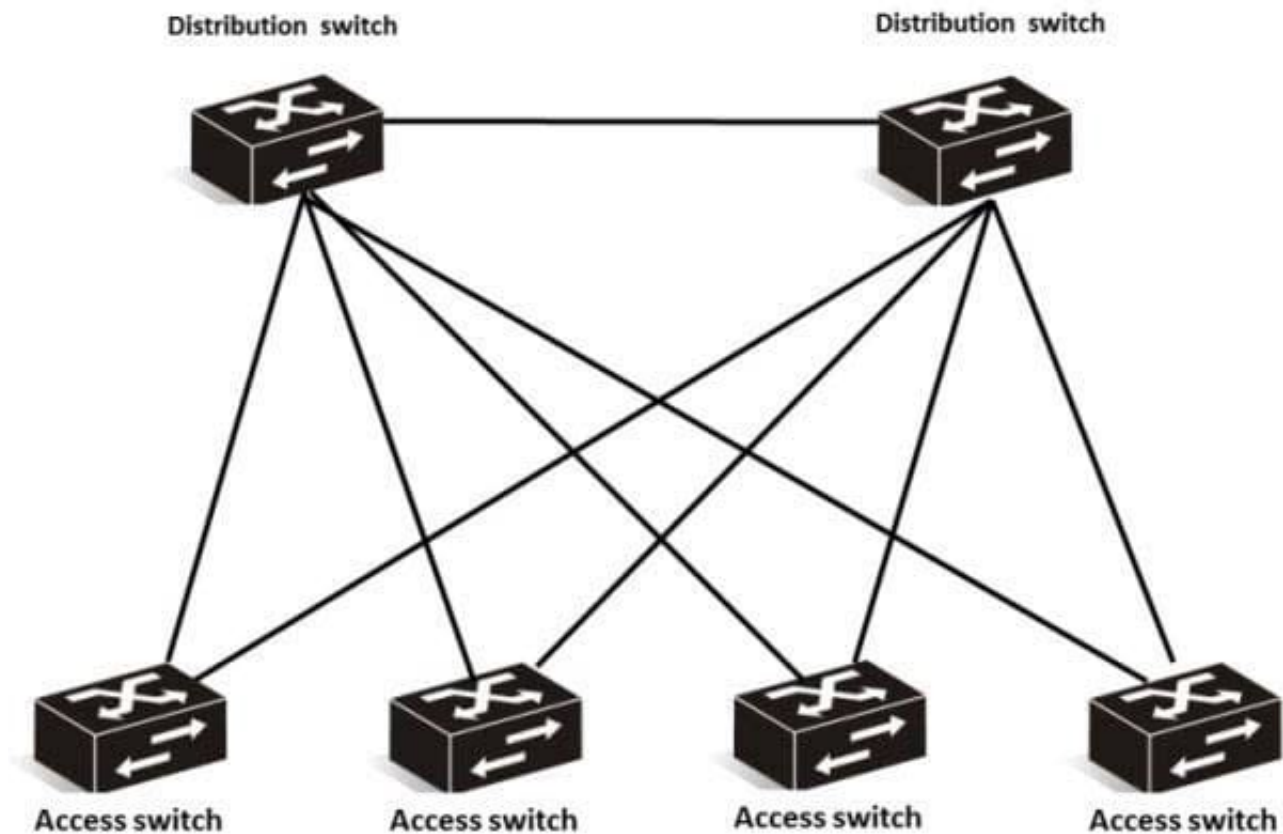
B. Change the network command in OSPF.

C. Define the VLAN 2 interface as a silent interface.

D. Define the ip authorized-managers 10.1.0.0/24 command.

Correct Answer: C

QUESTION 3



A network administrator has two distribution layer switches and four access layer switches. The network administrator is constantly resolving Spanning Tree problems and is looking for an alternative solution that provides redundancy and no Spanning Tree.

- A. ProVision switches with routing
- B. ProVision switches with aggregation
- C. Comware switches with auto-links
- D. Comware switches with distributed trunking

Correct Answer: B

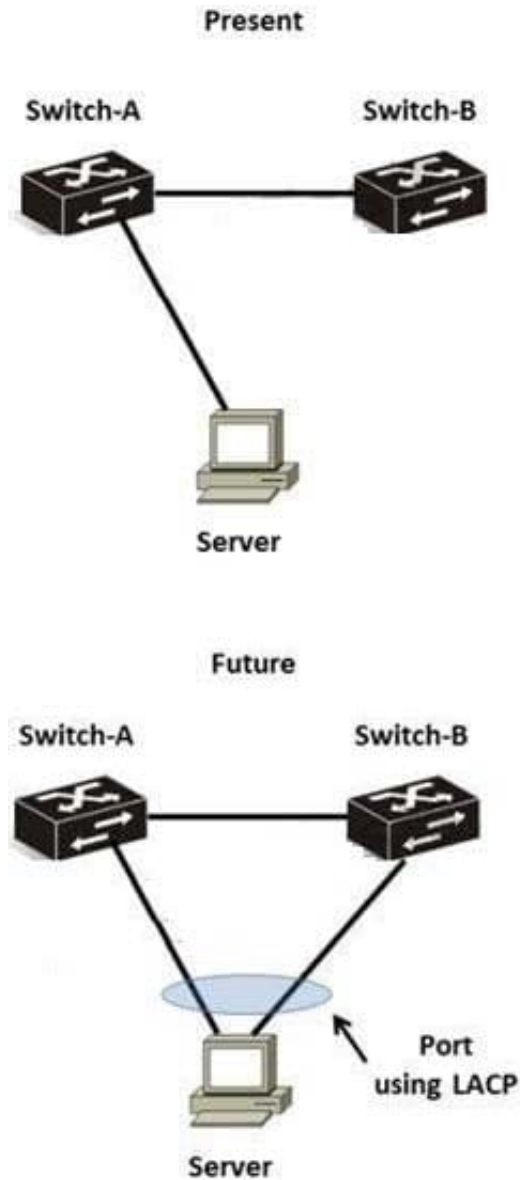
QUESTION 4

When performing auto discovery with Intelligent Management Center (IMC), which two components should be defined in order to fully manage the discovered networking devices?

- A. SNMP and syslog
- B. telnet and SSH
- C. SSH and TFTP
- D. SNMP and telnet

Correct Answer: D

QUESTION 5



A network administrator has a server with a single link to the network. The company is concerned about redundancy and wants to implement a solution like that shown in the right-hand side of the diagram.

Which solution meets the company's needs?

- A. HP Comware or HP ProVision switches using IRF
- B. HP Comware switches using IRF only
- C. HP Comware switches using meshed IRF or meshed stacking
- D. HP Comware switches using distributed trunking only

E. HP Comware switches using distributed trunking or IRF

Correct Answer: B

QUESTION 6

A network administrator receives a new HP Provision switch and notices that the software version running on the switch is older than what is currently used in the network. The network administrator copies an updated version of the operating

system from the new switch's USB port to the secondary flash location. The network administrator then executes the following command:

Provision# boot system flash secondary:

The switch reboots using the new operating system. However, when the network administrator turns off the switch and turns it back on, the switch boots from the old operating system.

Which solution should the network administrator use to fix the problem?

- A. Execute the startup-boot secondary command.
- B. Boot into the switch's Monitor ROM Console and perform the upgrade a second time.
- C. Execute the boot set-default flash secondary command.
- D. Execute the boot-loader file command.
- E. Execute the startup-default secondary command.

Correct Answer: C

Explanation: <http://hpblogs.lithium.com/t5/HP-Networking/HP-ProCurve-using-multiple-config-files/ba-p/42024#.Uy-5LqiSwkQ>

QUESTION 7

After setting up DHCP relay, the network administrator has the DHCP client try to acquire addressing information, but the process fails. What should the network administrator do to solve this problem?

- A. Configure DHCP relay on SwitchB.
- B. Enable DHCP Snooping on SwitchA.
- C. Execute the dhcp enable command on SwitchA.
- D. Execute the routing command SwitchA.

Correct Answer: C

QUESTION 8

Which statement is true about spanning tree and HP Comware and HP Provision switches?

- A. A Provision switch requires the active region-configuration command to activate changes.
- B. A Provision switch uses non-standard port costs in spanning tree calculations.
- C. A Comware switch automatically auto-senses edge ports.
- D. A Comware switch uses non-standard port costs in spanning tree calculations.

Correct Answer: D

QUESTION 9

Refer to the exhibit.

```
ProVision# show config files
```

```
Configuration files:
```

id	act	pri	sec	name
1	*		*	config1
2		*		baseconfig
3				oldconfig

```
ProVision# copy config config1 config config2
```

```
Unable to copy configuration to "config2"
```

```
ProVision#
```

A network administrator is managing the configuration files on an HP Provision switch and executes the commands shown in the exhibit. What is the probable cause of the error message when the network administrator tries to copy the file?

- A. The flash memory in the switch is full and supports no more files.
- B. The copy command should only be used to manage operating systems.
- C. No empty configuration memory slots exist on the switch.
- D. The copy command contains a syntax error.

Correct Answer: C

QUESTION 10

Which statement is true about the management of HP ProVision and Comware switches?

- A. Telnet SSH are enabled by default on Comware switches.

- B. Telnet is enabled but SSH is disabled on ProVision switches.
- C. Comware switches, by default, store usernames and passwords in a separate configuration file.
- D. ProVision switches, by default, store usernames and passwords in a separate configuration file.

Correct Answer: D

QUESTION 11

A customer must connect networks in two buildings. The buildings are 15 meters apart. The customer does not want the additional cost of installing fiber between the two buildings and thus is exploring wireless options.

If the customer selects an 802.11n wireless solution, which wireless mode should they use?

- A. inline
- B. infrastructure
- C. in-cell relay
- D. multipoint

Correct Answer: C

QUESTION 12

Which management protocol is enabled, by default, on HP Provision switches?

- A. Syslog
- B. SSH
- C. SNMP
- D. NTP

Correct Answer: B

QUESTION 13

A network administrator has installed IMC and the appropriate licenses. The network administrator is attempting to import the HP Comware and HP ProVision switches into IMC but is experiencing problems importing the Comware switches. The network administrator verifies the SNMPv2c configuration on both sets of switches and the SNMP configuration in IMC. The SNMP parameters are correct.

What is the cause of the import problem?

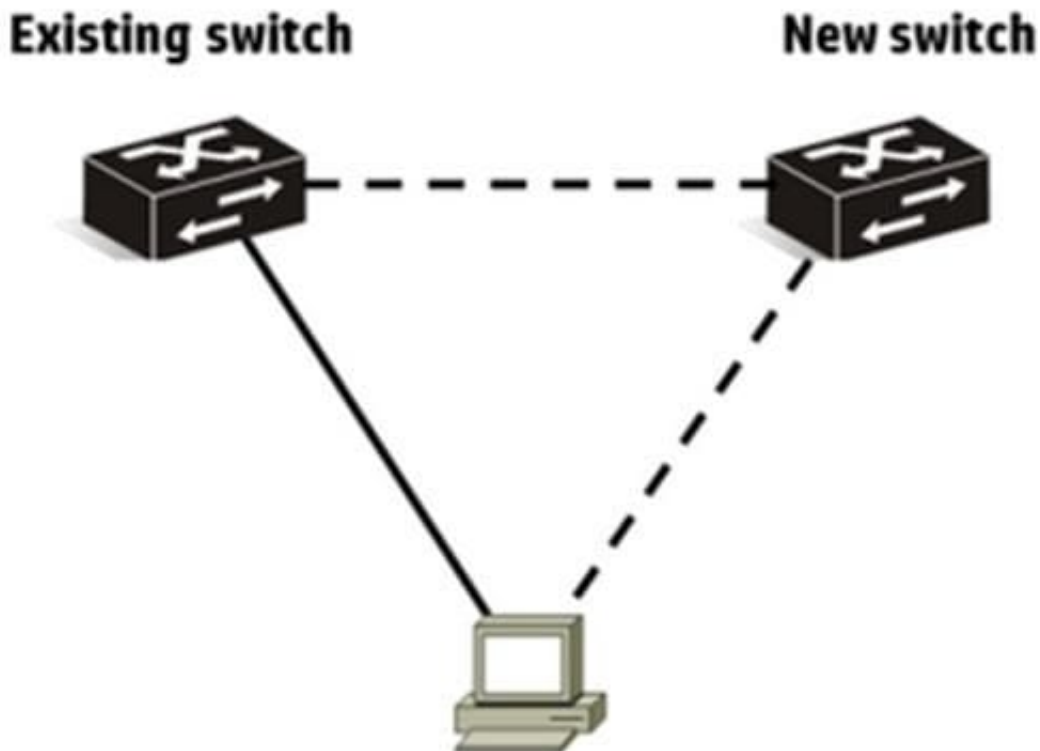
- A. Comware switches implement SNMPv3 by default.
- B. Comware switches require SSH to be configured for remote CLI access.

- C. Comware switches are not fully supported by IMC.
- D. Comware switches do not have telnet fully configured.

Correct Answer: D

QUESTION 14

Refer to the exhibit.



A network administrator has a server currently connected to an access layer switch. The network administrator needs link redundancy for the server and wants to add a second access layer switch and connect it to the server. Which solution should the network administrator implement to accomplish this goal?

- A. Add a Provision switch as the new switch and implement distributed trunking.
- B. Add a Provision switch as the new switch and implement IRF.
- C. Add a Comware switch as the new switch and implement MSTR
- D. Add a Comware switch as the new switch and implement link aggregation.

Correct Answer: B

QUESTION 15

A network administrator has set up a link between two HP ProVision switches. Both switches have an IP address in VLAN 1 and can ping each other in VLAN 1. The network administrator then creates VLAN 2 and tags it to same link of

both switches.

How can the network administrator verify that connectivity in VLAN2 is functional between the twoswitches?

- A. Assign each switch an IP address in VLAN 2 and use LLDP to test connectivity.
- B. Use either LLDP or ARP to test connectivity
- C. Assign each switch an ip address in VLAN 2, and use ICMP or LLDP to test connectivity
- D. Assign each switch an IP address in VLAN 2, and use ICMP to test connectivity
- E. Use LLDP to test connectivity

Correct Answer: C

[HP2-Z30 PDF Dumps](#)

[HP2-Z30 VCE Dumps](#)

[HP2-Z30 Practice Test](#)