

HP2-N29^{Q&As}

Understanding HP TippingPoint Solutions

Pass HP HP2-N29 Exam with 100% Guarantee

Free Download Real Questions & Answers **PDF** and **VCE** file from:

<https://www.leads4pass.com/hp2-n29.html>

100% Passing Guarantee
100% Money Back Assurance

Following Questions and Answers are all new published by HP Official Exam Center

- ⚙ **Instant Download** After Purchase
- ⚙ **100% Money Back** Guarantee
- ⚙ **365 Days** Free Update
- ⚙ **800,000+** Satisfied Customers



QUESTION 1

What happens when you use the IPS factory-reset feature?

- A. Only reset policies to default.
- B. Remove all IPS configuration, logs, and accounts.
- C. Remove only security profiles
- D. Remove only network information

Correct Answer: B

QUESTION 2

How does HP TippingPoint provide filter updates?

- A. TippingPoint Operating System
- B. IGRP
- C. Digital vaccine
- D. Hot Patch Install

Correct Answer: C

Digital Vaccine filters Using HP TippingPoint's Threat Management Center (TMC), the DVLabs team continually searches for emerging vulnerabilities and develops new attack filters to block network attacks. Filter updates provide rapid inoculation against emerging threats. Digital Vaccine filters are delivered at least once per week or on a prioritized basis as critical vulnerabilities are identified; filters can be deployed automatically with no user interaction required. Reference: <http://www.ndm.net/ips/pdf/hptippingpoint/4AA3-3612ENW.pdf> (Digital Vaccine filters)

QUESTION 3

A TippingPoint Operating System (TOS) can be downloaded from which website?

- A. TOS.tippingpoint.com
- B. TMC.tippingpoint.com
- C. HTC.tippingpoint.com
- D. SMC.tippingpoint.com

Correct Answer: B

Explanation: Only the link in answer B works, which redirects you to the site at <https://tmc.tippingpoint.com/> TMC/

Reference: <https://tmc.tippingpoint.com/TMC/>

QUESTION 4

Each physical IPS segment is actually defined as how many virtual segments?

- A. one
- B. two
- C. three
- D. four

Correct Answer: A

QUESTION 5

According to best practices, which steps are followed on the SMS to utilize a Digital vaccine on the IPS?

- A. Distribution and Obfuscation
- B. Obfuscation and Confusion
- C. Activation and Distribution
- D. Activation and Elimination

Correct Answer: D

QUESTION 6

Which action will cause your profile to take effect?

- A. Compare
- B. Import
- C. Distribute
- D. Export

Correct Answer: B

QUESTION 7

Where are Traffic Management Filters configured?

- A. within the applicable Digital vaccine
- B. the Management Filter Toolkit, from the Shared Settings menu option

- C. within the applicable profile
- D. from the Shared Settings menu option

Correct Answer: C

How To: Create/Edit a Traffic Management Filter

1. On the Profiles - Traffic Management screen, do one of the following:

- Click New.
- Right-click on an entry and select New

Reference: http://h20628.www2.hp.com/km-ext/kmcsdirect/emr_na-c02586208-1.pdf page 232.

QUESTION 8

Which log can only be accessed by a user with an IPS SuperUser role?

- A. Audit
- B. Permit
- C. Block
- D. Action

Correct Answer: A

QUESTION 9

To manage an IPS with an SMS, the user must enter which three pieces of information?

- A. IPS superuser name, IPS address, IPS superuser password
- B. device name, password, serial number
- C. IP address, device name, password
- D. operator ID, password, device name

Correct Answer: A

How To: To log on to the SMS Client

1. Double-click the TippingPoint SMS Client icon on your desktop. The SMS Log On screen displays.

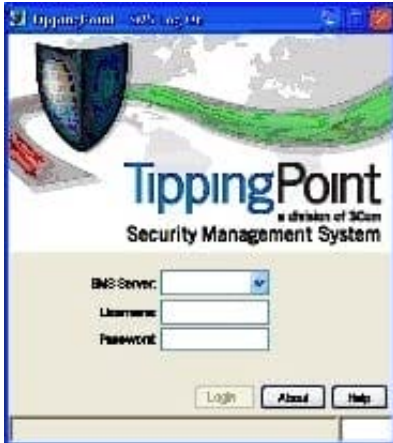


Figure 5 - 2: SMS Logon screen

2.

In the SMS Server field, type the IP address or fully qualified hostname of your SMS Server.
 3.

In the Username field, type your user ID. For initial configuration, use SuperUser. In the Password field, type the password you defined in the SMS Setup Wizard.
 5. Click Login.
-

QUESTION 10

The TippingPoint IPS Command Line Interface (CLI) is accessed using which protocol?

- A. SNMP
- B. VoIP
- C. TOS
- D. SSH

Correct Answer: D

Command Line Interface (CLI) -- Command line interface for reviewing and modifying settings on the device. The CLI is accessible through Telnet, SSH (secure access), and the Console serial port. Reference:

http://www.nfwest.com/tp/docs/techd291-tos3-1_commandref.pdf (page 5, see IPS local clients, 2nd bulleted point)

[HP2-N29 PDF Dumps](#)

[HP2-N29 VCE Dumps](#)

[HP2-N29 Exam Questions](#)