

# HP0-Y50<sup>Q&As</sup>

Architecting HP FlexNetwork Solutions

**Pass HP HP0-Y50 Exam with 100% Guarantee**

Free Download Real Questions & Answers **PDF** and **VCE** file from:

<https://www.leads4pass.com/hp0-y50.html>

100% Passing Guarantee  
100% Money Back Assurance

Following Questions and Answers are all new published by HP Official Exam Center

- ⚙ **Instant Download** After Purchase
- ⚙ **100% Money Back** Guarantee
- ⚙ **365 Days** Free Update
- ⚙ **800,000+** Satisfied Customers





## QUESTION 1

Which Flex Fabric product extends HP switch features to virtual hosts and extends HP VAN Connection Manager benefits to virtualized environments\\'?

- A. HP Virtual Connect Manager
- B. HP 5900v Virtual Switch
- C. HP MSR 2000 router
- D. HP Virtual Cloud Networks

Correct Answer: B

---

## QUESTION 2

An architect is planning an HP Wired-WLAN solution for an office with approximately 4000 users who will use the wireless network rather heavily and who need to roam seamlessly. The solution will have 256 MSM 460 APs. What is one reason for using two HP Wired- WLAN controllers for this solution?

- A. Each Wired-WLAN controller can only support 2000 users.
- B. The customer needs fast roaming, which requires a mobility solution between two controllers.
- C. Forwarding traffic through two controllers can prevent a bottleneck due to heavy usage.
- D. Each Wired-WLAN controller can only support 128APs.

Correct Answer: C

---

## QUESTION 3

A network architect is compiling information about the total cost ownership (TCO) for a proposal. Which factors play a role in TCO?

- A. Cost of remediation due to a future security breach
- B. Cost of regulatory fines associated with non-compliance
- C. Cost of upgrading modules for the proposal
- D. Cost of powering the solution

Correct Answer: D

---

## QUESTION 4

Which application might drive a company to invest in a campus LAN topology that offers lower latency for east/west?

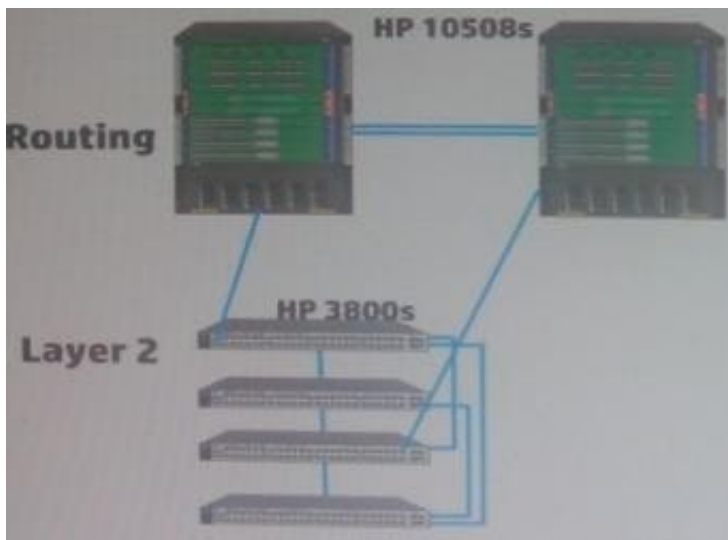


- A. Enterprise-wide VoIP solution
- B. Centralized database servers hosting a rich-media client-server application
- C. External customer-facing rich-media web application
- D. Enterprise-wide collaboration using video and messaging

Correct Answer: A

## QUESTION 5

Refer to the exhibit.



A network architect has planned redundant links as shown in the exhibit. What should the network architect do to ensure that the redundant link design is truly resilient?

- A. Implement the features such as link aggregation, backplane stacking, and intelligent Resilient Framework (IRF)
- B. Add another link between the Layer 2 switches and the core so that up to the two links can fail
- C. Implement a feature such as bidirectional forwarding detection (BFD) on each redundant link
- D. Make sure that each HP 10508 switch is configured as a root in one Multiple Spanning Tree Protocol (MSTP) instance

Correct Answer: C

## QUESTION 6

Which two requirements of a modern data center make Spanning Tree Protocol (STP) and other traditional loop elimination protocols for that environment?

- A. Requirement to implement routing clustering virtual machines



B. Need to consolidate traffic on a single path thorough the network

C. Greater reliance on direct attached storage

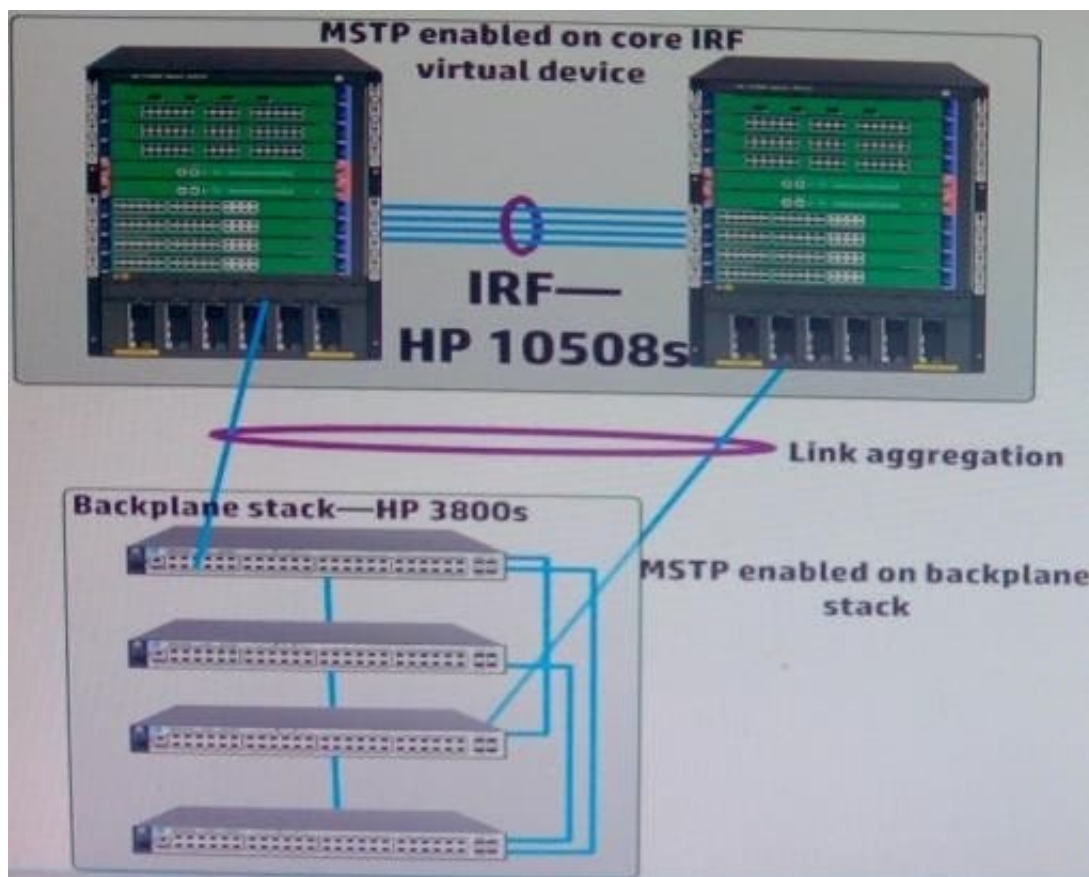
D. Need for faster convergence times

E. Need to support delay-sensitive applications

Correct Answer: BE

## QUESTION 7

Refer to the exhibit.



A network architect is proposing this solution to a customer. The customer network manager has a preference for Cisco VLAN Spanning Tree Plus (PVST+) because this protocol provides for fast convergence when a link fails and also provides per-VLAN load-sharing over links.

How would the network architect explain why the solution fits these requirements?

A. The MSTP component of the solution fulfills the same needs as PVST+ MSTP simply balances traffic per instance rather than per-VLAN

B. The redundant links between the switches are protected by MSTP and the built-in loop guard on HP-3800 switches. MSTP provides load-sharing and loop guard provides resiliency



C. The solution as shown provides the same load-sharing benefits as PVST+. To achieve the same resiliency benefits, the architect can add smart link to the meshed stack

D. The link aggregation between tiers provide even better resiliency and load-sharing than PVST+ while MSTP protects against accidental loops

Correct Answer: D

---

### QUESTION 8

A customer has a virtualized data center that uses Microsoft Hyper-V Windows Server 2012. The customer has provided this information about the hosts for the VMs:

Each host has a network (Hyper-V virtual switch) that supports VM production traffic and own two server 10G NICs

Each host has a network (Hyper-V virtual switch) that supports management traffic to the parent partition and owns two server Gigabit NICs

In each rack, the network architect plans to deploy two HP 5920 Series switches, acting as an Intelligent Resilient Framework (IRF) switch.

Which additional information does the architect need in order to plan the connection to each host?

A. Whether the virtual switches use Virtual Ethernet Port Aggregate (VEPA) VLAN tagging

B. Whether the virtual switches use sFlow or NetStream to load balance traffic over the server NICs

C. Whether the virtual switches support standard Spanning Tree Protocol (STP) or Cisco Per-VLAN Spanning Tree Protocol Plus (PVST+)

D. Whether the virtual switches use generic or dynamic NIC teaming (Link Aggregation Control Protocol[LACP]) and their hashing method

Correct Answer: D

---

### QUESTION 9

What are information technology Service Management (ITSM) framework, such as the infrastructure Technology Infrastructure Library (ITILv3) and The Open Group Architecture Framework (TOGAF)?

A. They are Internet Engineering Task Force (IETF) standards that provide evolving guidelines and best practices for IT design and management

B. They are high-level approaches that provide recommendations and best practices for IT design management

C. They are industry-wide standards that provide guidelines for enterprise design and management

D. They are Internet Engineering Task Force (IETF) standards that define proper network design

Correct Answer: B

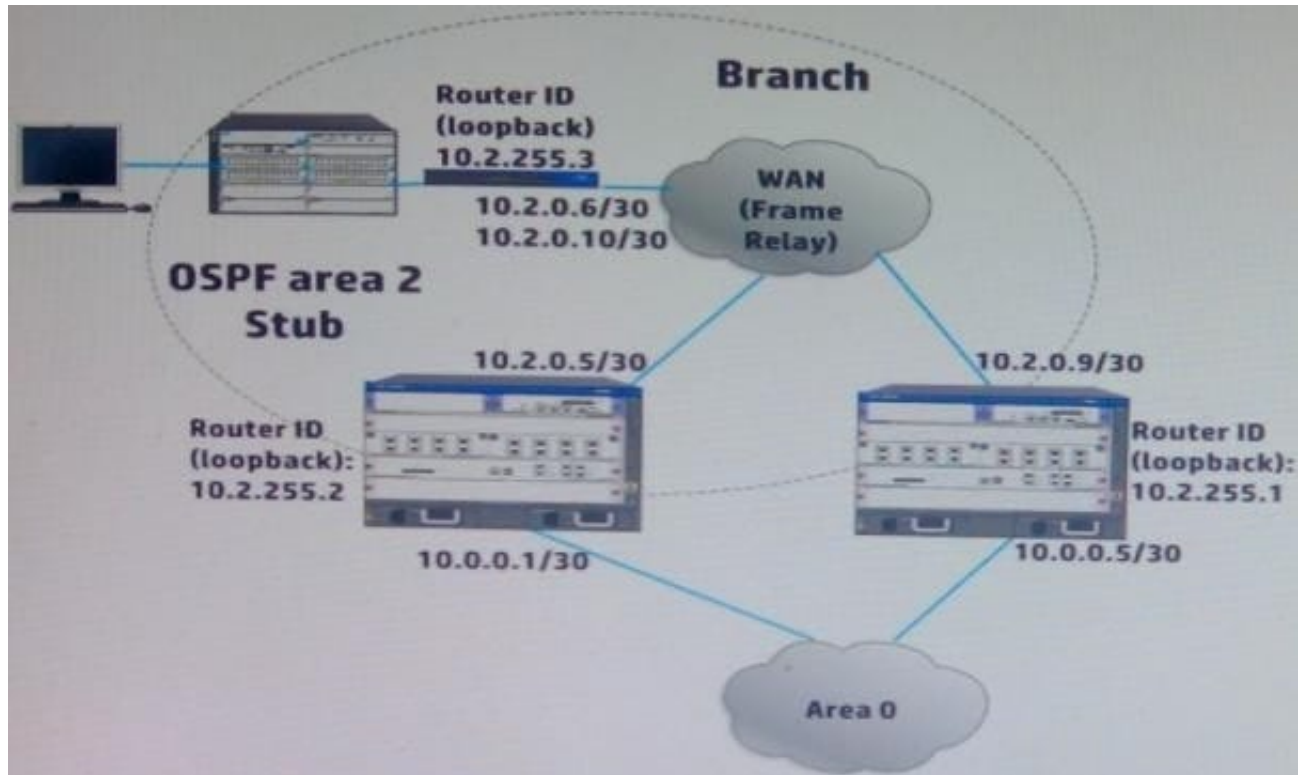
Reference: [http://en.wikipedia.org/wiki/Information\\_Technology\\_Infrastructure\\_Library](http://en.wikipedia.org/wiki/Information_Technology_Infrastructure_Library)

---



### QUESTION 10

Refer to the exhibit.



The branch routers have E1 lines into the Frame Relay Service provider network. The exhibit shows just one branch, but the network actually has 30 branches. The HP 6600 Series routers, which are the area border routers (ABRs), have E2

lines into the Frame Relay network.

The routers in the exhibit Open Shortest Path First (OSPF). The enable OSPF on network follows:

In area 2, OSPF is enabled on network 10.2.0.0/16 In area 0, OSPF is enabled on network 10.0.0.0/16

The customer requires resilience at the WAN core. Which design change best supports that requirement?

- A. Add additional links from the HP 6600 Series routers to the WAN
- B. On each branch router, add a floating static route to one of the ABRs in case the OSPF solution fails
- C. Add a Gigabit link between the HP 6600 Series router with a network in area 0 and area 2.
- D. At each branch, add a redundant link between the switch and the router

Correct Answer: B

### QUESTION 11



A customer has a virtualized data center with hosts that are managed by VMware vCenter. The network architect has proposed the HP Virtual Application Networks (VAN) Connection Manager (CM) and Resource Automation Manager (RAM) modules for HP Intelligent Management Center (IMC). The architect also proposed the HP 5900v switches and the proper server access layer products.

Which technology must the access layer switches that connect to the virtualized servers support?

- A. Transparent Interconnection of Lots of Links (TRILL)
- B. Intelligent Resilient Framework (IRF)
- C. Ethernet Virtual Bridging (EVB)/Virtual Ethernet Port Aggregator (VEPA)
- D. Fiber Channel over Ethernet (FCoE)

Correct Answer: B

---

### QUESTION 12

Which task does the HP Software-Defined Networking (SDN) Developer Support Description service help a customer perform?

- A. Replace existing virtual switches with HP-supported software-based switches.
- B. Create, test, and troubleshoot SDN applications
- C. Determine whether the company's network infrastructure is ready for SDN.
- D. Develop a migration plan to an SDN environment.

Correct Answer: A

---

### QUESTION 13

A customer has a policy of using open standard protocols to maintain the flexibility to use multiple vendors. Which protocols are open standard (three.)

- A. PVST+
- B. MSTP
- C. CDP
- D. OSPF
- E. IGRP
- F. LLDP

Correct Answer: BDF

---



## QUESTION 14

A network architect has created a quality of service (QoS) for an HP 5900 Series switch that uses four traffic classes. Class of Service (CoS) 5 for voice traffic. CoS 4 for Video traffic. And CoS 0 for everything else. The switch ports implement strict priority (SP) queuing.

What would be an advantage of enabling weighted fair queuing (WFQ) instead of SP?

- A. When congestion occurs, the port will randomly drop traffic in the CoS 3 and CoS 0 queues, preventing TCP synchronization that increase congestion
- B. The architect can ensure that voice traffic is always forwarded before bandwidth intensive video traffic
- C. The architect can guarantee specific bandwidth to each class but prevent video and SAP applications from starving out other applications entirely
- D. When congestion occurs, the port will buffer traffic in lower priority queues rather than drop it immediately as it does with SP queuing

Correct Answer: C

---

## QUESTION 15

The customer has a virtualized data center. The virtual hosts use virtual distributed switches with multiple redundant uplinks and these use Link Aggregation Control Protocol (LACP).

Which technology available in HP switches enhances high availability in this environment?

- A. Fiber Channel over Ethernet (FCoE) allows the virtual host to send storage traffic over the server Ethernet uplinks if the FC connection.
- B. Virtual Ethernet Port Aggregator (VEPA) combines redundant server links into a single high-bandwidth trunk.
- C. Intelligent Resilient Framework (IRF) allows redundant server links to connect to different physical switches.
- D. Net Stream and sFlow technologies provide the built-in capability to optimize bandwidth flows dynamically.

Correct Answer: C

[HP0-Y50 Study Guide](#)

[HP0-Y50 Exam Questions](#)

[HP0-Y50 Braindumps](#)