

HP0-S33^{Q&As}

Advanced Integration and Management of HP Server Solutions

Pass HP HP0-S33 Exam with 100% Guarantee

Free Download Real Questions & Answers **PDF** and **VCE** file from:

<https://www.leads4pass.com/hp0-s33.html>

100% Passing Guarantee
100% Money Back Assurance

Following Questions and Answers are all new published by HP Official Exam Center

- ⚙ **Instant Download** After Purchase
- ⚙ **100% Money Back** Guarantee
- ⚙ **365 Days** Free Update
- ⚙ **800,000+** Satisfied Customers



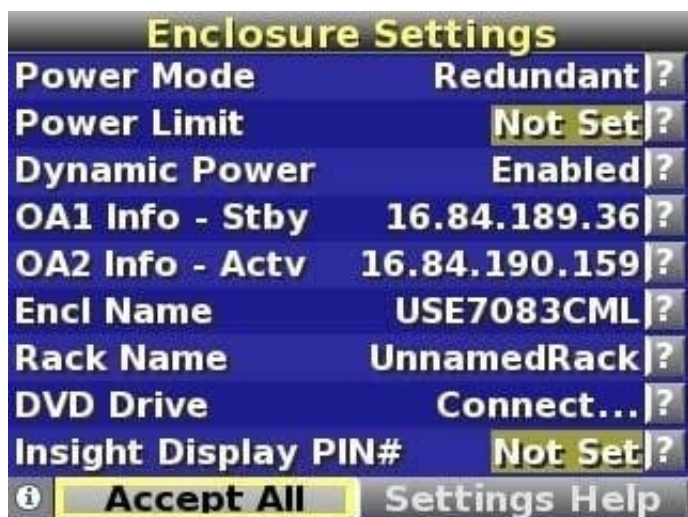
QUESTION 1

What can you configure with the BladeSystem Insight Display on a c7000 enclosure? (Select three)

- A. Rack name
- B. Power mode
- C. Number of fans installed
- D. OA1 IP address
- E. Blade name
- F. Midplane serial number

Correct Answer: ABD

Reference: <http://h20000.www2.hp.com/bc/docs/support/SupportManual/c00698534/c00698534.pdf> (page 13)

**QUESTION 2**

What is a recommended best practice when installing multiple enclosures?

- A. Disable the Single Sign-On feature
- B. Place OA and iLO on separate subnets
- C. Use DHCP to avoid static addressing
- D. Place the OA on a management network

Correct Answer: B

<http://h20000.www2.hp.com/bc/docs/support/SupportManual/c00705292/c00705292.pdf> (pag 20 Security considerations)

QUESTION 3

What is a key feature of the HP Sizer for Microsoft Hyper-V 2008 R2?

- A. enables comparisons of different solution configurations
- B. Calls the Salesbuilder Workbench application to create a validated configuration
- C. Ability to direct output into the Microsoft Assessment and Planning tool
- D. Creates a Matrix Operating Environment template (or Cloudmap) from the results

Correct Answer: A

<http://h71019.www7.hp.com/ActiveAnswers/us/en/sizers/microsoft-hyper-v2008.html>

The HP Sizer for Microsoft Hyper-V 2008 R2 is an automated, downloadable tool that provides quick and helpful sizing guidance for "best-fit" HP server and storage configurations running in a Hyper-V R2 environment. The tool is intended to

assist with the planning of a Hyper-V R2 virtual server deployment project.

It enables the user to quickly compare different solution configurations and produces a customizable server and storage solution complete with a detail Bill of Materials (BOM) that includes part numbers and prices.

QUESTION 4

Which HP tool assists in estimating power consumption selection, including power supplies, at a system, rack, and multi-rack levels?

- A. UPS Sizing Tool
- B. Insight Control Manager
- C. Power Advisor
- D. Power Protector

Correct Answer: C

<http://h18004.www1.hp.com/products/solutions/power/index.html> (first para) The HP Power Advisor is a tool provided by Hewlett-Packard to assist in the estimation of power consumption and proper selection of components including power supplies at a system, rack, and multi-rack level.

QUESTION 5

You are working with a customer who is planning to run critical applications on VMware virtual machines. A secondary data center is planned that will be used as a backup center in case of a disaster. Which product should you include in your proposal to satisfy the disaster recovery requirement for this solution?

- A. Site Recovery Manager

- B. Insight Control server migration
- C. vCenter Server Virtual Appliance
- D. Logical Server Migration

Correct Answer: A

<http://www.vmware.com/products/site-recovery-manager/>

QUESTION 6

What are iSCSI external storage arrays? (Select two)

- A. HP MSA2000i
- B. HP P4000
- C. HP MDS600
- D. HP MSA50
- E. HP MSA2000SA

Correct Answer: AB

http://h18000.www1.hp.com/products/quickspecs/13330_na/13330_na.PDF http://h18000.www1.hp.com/products/quickspecs/13552_div/13552_div.pdf

-

HP 600 Modular Disk System, HP extends and redefines direct-attached storage for BladeSystem servers, combining the simplicity and cost effectiveness of direct-attached storage without sacrificing flexibility or performance.

-

The HP 2000sa G2 Modular Smart Array is a 3Gb SAS direct attach

-

The HP 50 Modular Smart Array (MSA50) Enclosure is a 1U Serial Attach SCSI(SAS) disk drive storage enclosure supporting Small Form Factor(SFF) SAS or Serial ATA(SATA) drives

QUESTION 7

Which RBSU setting should be changed for low latency and maximum performance?

- A. Configure for no C-states
- B. Enable turbo-boost
- C. Enable iLO performance monitoring

D. Disable power regulator

Correct Answer: A

QUESTION 8

Which ProLiant series model provides density optimized for flexibility and manageability?

A. DL

B. BL

C. SL

D. ML

Correct Answer: A

<http://www.hp.com/canada/products/static/proliant/index.html>

QUESTION 9

Which Advanced Memory Protection configuration allows a system to survive the complete of two DRAM devices?

A. Lockstep mode with RDIMMs

B. Online Spare Memory mode

C. Lockstep mode with UDIMMs

D. Advanced ECC mode with UDIMMs

Correct Answer: A

http://h20000.www2.hp.com/bizsupport/TechSupport/Document.jsp?lang=esandcc=lamerica_nsc_cnt_amerandtaskId=115andprodSeriesId=5177937andprodTypeId=15351andobjectID=c03250296

The server also can operate in independent channel mode or combined channel mode (lockstep). When running in lockstep mode, user gains reliability in one of two ways:

If running with UDIMMs (built with x8 DRAM devices), the system can survive a complete DRAM failure (SDDC). In independent channel mode, this failure would be an uncorrectable error.

If running with RDIMM (built with x4 DRAM devices), the system can survive the complete failure of two DRAM devices (DDDC). Running in independent mode, the server can only survive the complete failure of a Single DRAM Device

(SDDC).

QUESTION 10

Which comprehensive tool can be used to verify and update software and firmware on a ProLiant server?

- A. Software System Updates
- B. Service Pack for ProLiant
- C. HP System Management Homepage
- D. HP ILO Management Engine

Correct Answer: B

<http://h18004.www1.hp.com/products/servers/management/spp/index.html>

HP Service Pack for ProLiant is an integrated systems software and firmware solution offered across a broad portfolio of many generations of supported HP ProLiant SL/ML/DL/BL 300, 500, 700, and 900 series servers and HP BladeSystem infrastructure.

QUESTION 11

You observe a 100% CPU utilization on one of the virtual machines. What should you do first to solve the performance problem for that machine, assuming that applications running on that server work properly? (Select two)

- A. Verify if the Hyper Threading has been enabled for that virtual machine.
- B. Verify CPU affinity settings for that virtual machine.
- C. Verify the location of the .VSWP file for that virtual machine.
- D. Verify if the VMware tools are installed on that virtualization machine.
- E. Verify the host CPU utilization, reservation and limit configured for that virtual machine.

Correct Answer: BE

QUESTION 12

The Remote Deployment Pack software enables the Rip-and-Replace functionality. You can use Rip-and- Replace to assign a particular function or role to which device?

- A. ProLiant BL server
- B. Onboard Administrator
- C. Virtual Connect Module
- D. ProLiant Gen8 DL based server

Correct Answer: A

<http://bizsupport.austin.hp.com/bc/docs/support/SupportManual/c01154890/c01154890.pdf> (pag17)

QUESTION 13

Which HP software delivers active health and performance monitoring?

- A. Insight Dynamics
- B. Insight Remote Support
- C. Insight Control
- D. Insight Rapid Deployment

Correct Answer: C

<http://h18004.www1.hp.com/products/servers/management/ice/index.html>

Monitor Infrastructure Health and Performance Continuously -Monitor system health and performance through HP SIM, including "phone home" and warranty and service contract reporting functions -Quickly pinpoint and resolve bottlenecks with processors, memory, NICs, PCI buses to tune your existing server infrastructure for maximum performance -Compare actual performance with the known capabilities of each component, and determine in real time which components are experiencing performance issues

QUESTION 14

You are designing a new multi-site data center. A key requirement for storage is to start with a small solution and include the ability to increase capacity and performance as needed. Which storage solution has the opportunity to start with 2 nodes, scaling up to 32 nodes as a single solution?

- A. HP 3PAR T800/P10000
- B. HP P2000
- C. HP P6000 EVA
- D. HP P4000

Correct Answer: D

QUESTION 15

You are upgrading the iLO 4 firmware and the flash fails. What is the next step?

- A. Retry the flash before rebooting the server or iLO.
- B. ~~to reboot so that you can revert to the original version.~~
- C. Pull the power cord to abort upgrade and revert to the original version.
- D. Reboot the server and re-enter the iLO update to force the update.

Correct Answer: A

If this error occurs, click the Clear Error button to reset the flash process, and then try the firmware update again with

the correct firmware file. If you do not clear the error, the same error might occur even when you use the correct firmware file.

[HP0-S33 PDF Dumps](#)

[HP0-S33 VCE Dumps](#)

[HP0-S33 Exam Questions](#)