

FM0-305^{Q&As}

Developer Essentials for FileMaker 11

Pass FileMaker FM0-305 Exam with 100% Guarantee

Free Download Real Questions & Answers **PDF** and **VCE** file from:

<https://www.leads4pass.com/fm0-305.html>

100% Passing Guarantee
100% Money Back Assurance

Following Questions and Answers are all new published by FileMaker
Official Exam Center

- ⚙ **Instant Download** After Purchase
- ⚙ **100% Money Back** Guarantee
- ⚙ **365 Days** Free Update
- ⚙ **800,000+** Satisfied Customers



QUESTION 1

How should a database be configured so that users will NOT be prompted for a user name and password when accessing the database via Instant Web Publishing (IWP)?

- A. replace the default IWP login page with a custom home page
- B. enable the [Guest] account and ensure that it is the only active account with the [fmiwp] extended privilege enabled
- C. ensure that at least one user account has the [fmiwp] extended privilege and that the password for the account is blank
- D. create a script that uses the Relogin script step to log all users in as the [Guest] user, and set that script to run when the file opens

Correct Answer: B

QUESTION 2

Which three conditions must be met to allow user access via accounts that are externally authenticated? (Choose three.)

- A. The file must be hosted from FileMaker Server.
- B. Account Group Name must match a Group Name specified in the external authentication directory service.
- C. The associated privilege set must have the Extended Privilege Access via FileMaker Network (fmapp).
- D. The associated privilege set must have the Extended Privilege Access via External Server Authentication (fmesa).
- E. The Specify Directory Service Settings in the FileMaker Server Admin Console must be configured to include the LDAP Server Address, Port, and Search Base.

Correct Answer: ABC

QUESTION 3

Which two types of fields will always be excluded from the search when a user performs a Quick Find? (Select two.)

- A. merge fields
- B. summary fields
- C. unindexed fields
- D. related fields in a portal
- E. fields with global storage

Correct Answer: BE

QUESTION 4

Consider two FileMaker files, Collection and Item, where tables from Item are included in the Relationships Graph of Collection. Which method will preserve all functionality in the Relationships Graph of Collection after renaming the Item file to Artifact?

- A. delete referenced Item table occurrences in the Relationships Graph for Collection and recreate them for Artifact
- B. click the Repair Reference button in the Relationships Graph for Collection and reset the file path
- C. choose File > Manage > External Data Sources... for Collection and reset the file path
- D. select referenced Item table occurrences in the Relationships Graph for Collection and rightclick to choose Rename File Source...
- E. choose the File > Recover... menu in FileMaker Pro 11 Advanced, select the Collection file, then choose Repair References under Advanced Recover Options

Correct Answer: C

QUESTION 5

A FileMaker 11 database is hosted from FileMaker Server 11 running on Windows Server 2008.

Which two will allow a Macintosh OS X FileMaker Pro 11 client to access an External Data Source through ESS in this hosted database? (Choose two.)

- A. Enable ODBC/JDBC is checked in the ODBC/JDBC configurations tab of the Server Admin Console.
- B. The Windows and Macintosh OS X drivers are installed in the FileMaker Server extensions folder.
- C. Enable FileMaker Server to use plugins is checked in the Server plugins tab of the Server Admin Console.
- D. The Windows ODBC driver is installed with a System DSN to the external data source on the FileMaker Server computer.
- E. Authentication for the data source is set to prompt user for user name and password in the Edit Data Source dialog box for Manage External Data Sources.

Correct Answer: DE

QUESTION 6

Which two statements are true concerning Administrator Groups in FileMaker Server 11? (Choose two.)

- A. Administrator Groups may be nested.
- B. The Administrator Groups feature is only available in FileMaker Server 11 Advanced.
- C. A group administrator can disconnect clients from databases in their Administrator Group.

- D. A group administrator can limit the numbers of clients that can access hosted files within their Administrator Group.
- E. A group administrator can change the FileMaker security settings for all databases in their Administrator Group.

Correct Answer: BC

QUESTION 7

Given Table A in File A, which condition allows access to Table A while using another file called File B?

- A. File B must be opened and cascade its account credentials to File A.
- B. File A and File B must have an account with the same name and password.
- C. The privilege set associated with the account that is logged into File A must allow access to the records in Table A.
- D. The privilege set associated with the account that is logged into File B must allow access to the records in Table A.

Correct Answer: C

QUESTION 8

Which statement is true about the use of encryption in FileMaker 11?

- A. Network traffic between FileMaker Pro 11 and an ODBC client can be encrypted.
- B. Network traffic between FileMaker Server 11 and the Web Publishing Engine can be encrypted.
- C. When FileMaker Pro 11 is a client of another copy of FileMaker Pro 11, the network traffic between the two can be encrypted.
- D. When FileMaker Pro 11 is a client of FileMaker Server 11, the network traffic between the two can be encrypted and the data stored on FileMaker Server 11 is encrypted on disk.

Correct Answer: B

QUESTION 9

What is the minimal requirement to add an external FileMaker data source table occurrence of Inventory from a file called DEPT to the Relationships Graph of a file called PROD?

- A. an active account associated with the [Full Access] privilege set in both PROD and DEPT
- B. an active account associated with any privilege set for PROD and any privilege set that can view Inventory in DEPT
- C. an active account associated with a privilege set that has the Manage External Data Sources option checked in both PROD and DEPT
- D. an active account associated with the [Full Access] privilege set in PROD and an active account for DEPT associated with any privilege set that can view Inventory

E. an active account associated with a privilege set that has the Manage External Data Sources option checked in DEPT and a valid account with the [Full Access] privilege set in PROD

Correct Answer: D

QUESTION 10

Given the following function:

Substitute (myText ["abc" "XYZ"] ["XYZ" "abc"])

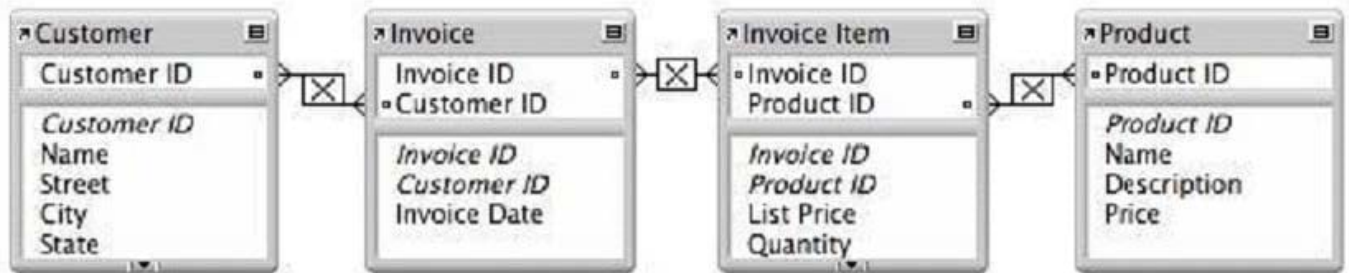
if the field myText contains "abcxyz", what is the result?

- A. abcababc
- B. abcxyz
- C. XYZabc
- D. XYZxyz

Correct Answer: B

QUESTION 11

Consider a FileMaker Pro 11 database with the following tables and fields: Assuming only the above relationships between table occurrences, using sorting if necessary, which two actions can be performed? (Choose two.)



- A. create a value list that shows all Invoices for a chosen Customer
- B. create a value list on a Product layout which displays all Customers
- C. find all of the Customers who have ever ordered a specific Product
- D. create a portal to display each Product that has been ordered by a Customer
- E. display all records from the Customer table in a portal on a layout for an Invoice Item record

Correct Answer: BE

QUESTION 12

In FileMaker Pro 11 Advanced, which two statements are true about the Data Viewer and Script Debugger? (Choose two.)

- A. The Current tab of the Data Viewer can be used to modify the value of a variable.
- B. The Script Debugger will be invoked when a script is run from a button, but not from a Custom Menu.
- C. The Watch tab of the Data Viewer can be used to create global variables when the user has [Full Access] privileges in a file.
- D. The Current tab of the Data Viewer can be used to modify the value of a field with global storage while a script is paused in the Script Debugger.

Correct Answer: AC

QUESTION 13

Which statement is true about script parameters in FileMaker Pro 11?

- A. Script parameters can include any number of repetitions.
- B. A subscript inherits the script parameter of the script that called it.
- C. Scripts set to run OnFirstWindowOpen cannot include script parameters.
- D. When choosing scripts from the Scripts menu, script parameters can be added by holding down the Option (Mac OS X) or Alt (Windows) key.
- E. Get(ScriptParameter) results in a returndelimited list of script parameters for all currently running scripts in a window's script stack.

Correct Answer: C

QUESTION 14

What is the maximum number of recursive calls that can be made utilizing a custom function in FileMaker Pro 11 Advanced?

- A. 10,000
- B. 32,000
- C. 50,000
- D. 64,000

Correct Answer: C

QUESTION 15

Given the following formula:

Case (Score > 200 "Below Average"

Score > 400 "Average"

Score > 600 "Above Average"

Score)

Assuming the value of Score is 800, what is the result?

A. Below Average

B. Average

C. Above Average

D. 800

Correct Answer: A

[Latest FM0-305 Dumps](#)

[FM0-305 Practice Test](#)

[FM0-305 Study Guide](#)