

## E20-690<sup>Q&As</sup>

VNX Solutions Specialist Exam for Platform Engineers

**Pass EMC E20-690 Exam with 100% Guarantee**

Free Download Real Questions & Answers **PDF** and **VCE** file from:

<https://www.leads4pass.com/e20-690.html>

100% Passing Guarantee  
100% Money Back Assurance

Following Questions and Answers are all new published by EMC  
Official Exam Center

-  **Instant Download** After Purchase
-  **100% Money Back** Guarantee
-  **365 Days** Free Update
-  **800,000+** Satisfied Customers



**QUESTION 1**

You are adding two DAEs: one 15-drive and one 25-drive. What are the advantages of cabling the additional DAEs so that one is added to SAS 0 and one is added to SAS 1?

- A. DAE 1 and DAE 2 are load-balanced across the SAS 0 and SAS 1 ports on each SP for improved performance.
- B. There are no specific advantages, since both SAS 0 and SAS 1 ports are connected to the same internal SP bus.
- C. The 15- and 25-drive DAEs must reside on different SAS buses to preserve future expansion options.
- D. The 25-drive DAE 2 should be connected to SAS 0 along with the DPE drives to support EFD options.

Correct Answer: A

---

**QUESTION 2**

Your customer contacts you regarding an illuminated hardware fault LED on a VNX LCC component. Using ESRS you access the system with Unisphere and determine that the faulted LCC component needs to be replaced. Which action would you take to get the LCC part number for ordering a new replacement part?

- A. Use the VNX Procedure Generator and view the specific VNX model parts guide.
- B. Access the Alerts section in Unisphere and locate the specific alert for the faulted LCC.
- C. Launch Unisphere Service Manager and perform a system verification operation.
- D. Access the Hardware for File section of Unisphere and locate the faulted LCC.

Correct Answer: A

---

**QUESTION 3**

Which operations can you perform with VNX Installation Assistant?

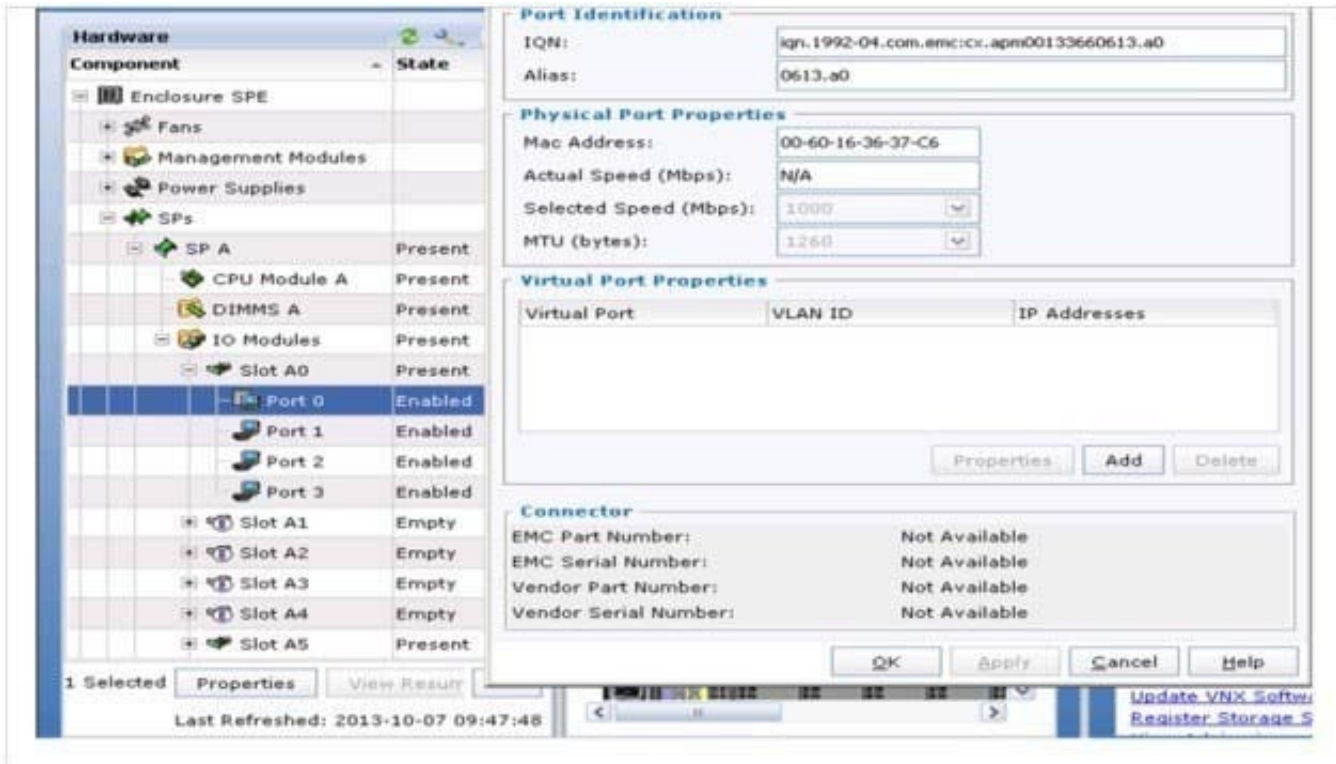
- A. Create RAID groups, storage groups, and LUNs
- B. Configure LUN masking for non-VNX host access
- C. Configure SnapSure and replication
- D. Configure MirrorView and SnapView

Correct Answer: A

---

**QUESTION 4**

Refer to the exhibit.



From the highlighted information in the picture, which type of I/O module is represented?

- A. 4 port 1G Base T iSCSI
- B. 4 port 8G FC
- C. 4 port 8Gb copper ethernet
- D. 4 port FCoE

Correct Answer: A

## QUESTION 5

How is a storage subsystem connected to a VNX Gateway in a direct-attached environment?

- A. Fibre Channel
- B. Ethernet public LAN
- C. Serial
- D. Ethernet private LAN

Correct Answer: A

## QUESTION 6

Which statement applies to the VNX w/MCx (VG10 and VG50) Gateway configuration?

- A. VNX w/MCx Gateway can use Symmetrix VMAX only
- B. VNX w/MCx Gateway can only use Symmetrix VMAX, VNX Block, and/or CLARiiON for the storage subsystem
- C. VNX w/MCx Gateway must be attached to the storage array through a SAN
- D. Storage subsystem cannot be used to provide storage to other hosts

Correct Answer: A

---

#### **QUESTION 7**

You are tasked with running CLI commands. You discover that SPB is responsive, but SPA is in a degraded mode. If running commands from SPB, what is the function of the `speclcli - issuePeerNMIcommand`?

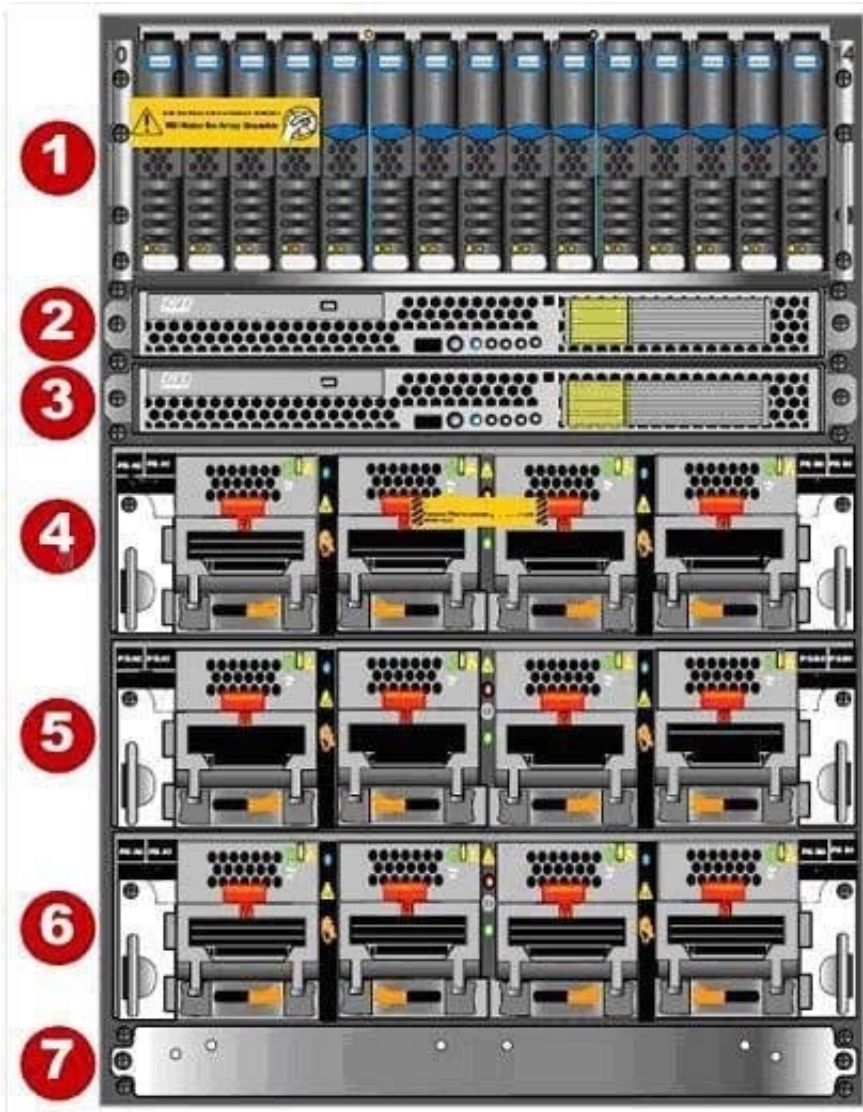
- A. Triggers a panic dump on SPA
- B. Triggers a panic dump on SPB
- C. Display the startup progress on SPA
- D. Display the startup progress on SPB

Correct Answer: A

---

#### **QUESTION 8**

Refer to the exhibit.



An engineer is onsite completing a rack-and-stack installation for a VNX5700 Unified storage system when the customer asks which enclosure contains the SP A controller.

What do you reply?

- A. 6
- B. 1
- C. 4
- D. 2

Correct Answer: A

**QUESTION 9**

During a VNX gateway manual installation you are registering Data Mover initiators on the VNX Block back-end array.

Which 8-byte WWN is the initiator for Data Mover 2 HBA 0?

- A. 5006016036A00190
- B. 5006016136A00190
- C. 5006016836A00190
- D. 5006016936A00190

Correct Answer: A

---

**QUESTION 10**

You are tasked with the installation of an enterprise class VNX Unified field-installable unit. Which resource will provide you with the cabling connections for the secondary Control Station?

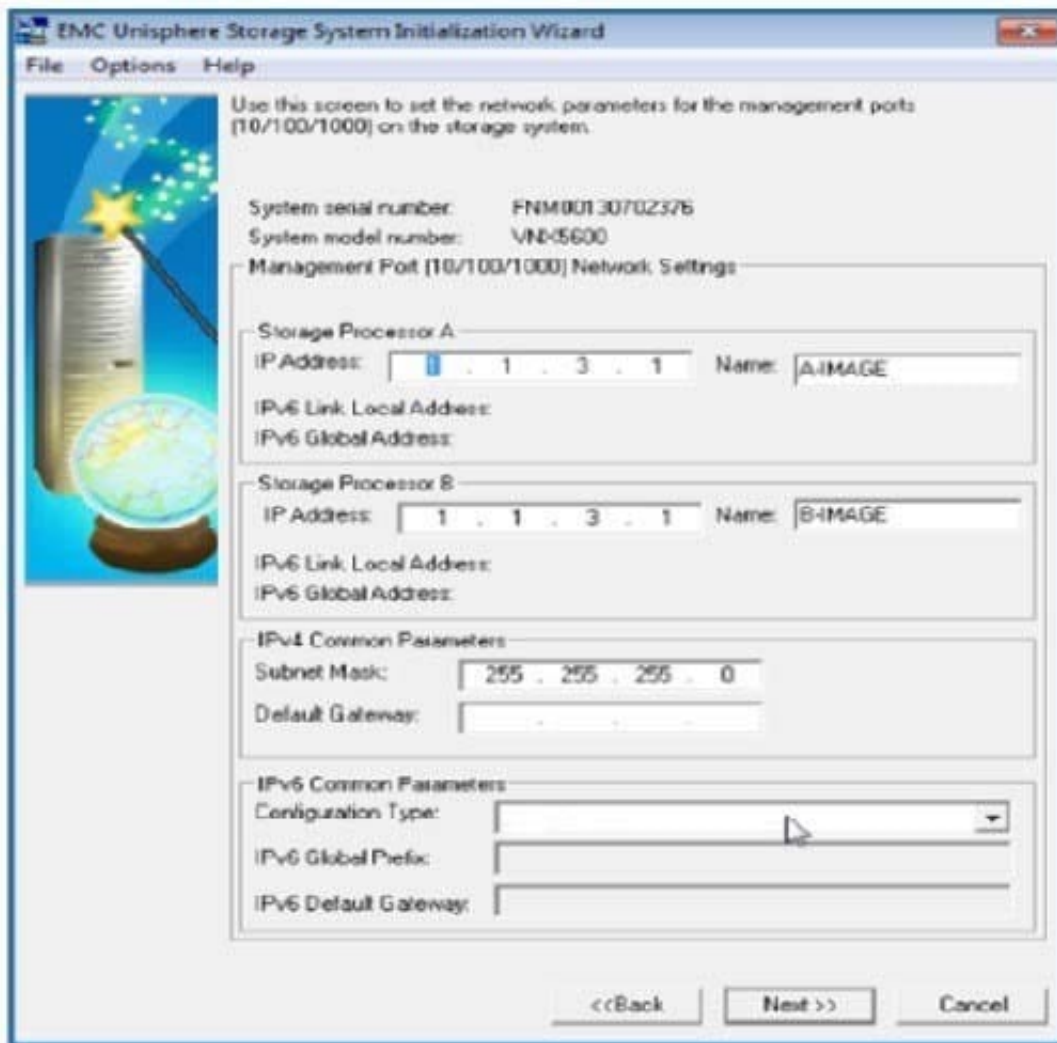
- A. VNX Installation Guide
- B. Unisphere Service Manager
- C. System Operations Guide
- D. VNX Installation Toolkit

Correct Answer: A

---

**QUESTION 11**

Refer to the exhibit.



What is a function of the IPv6 Common Parameters configuration type?

- A. Disables IPv6 addressing on the SPs
- B. Enables configuration of IPv6 in Unisphere
- C. Disables the reminder to reboot after the configuration is done
- D. Enables IPv4 addressing on the SPs

Correct Answer: A

**QUESTION 12**

A new VNX Unified system has been installed. The engineer would like to verify that the hosts are running a supported operating system and EMC PowerPath software version. What resource should be used?

- A. VNX Simple Support Matrix
- B. VNX Procedure Generator

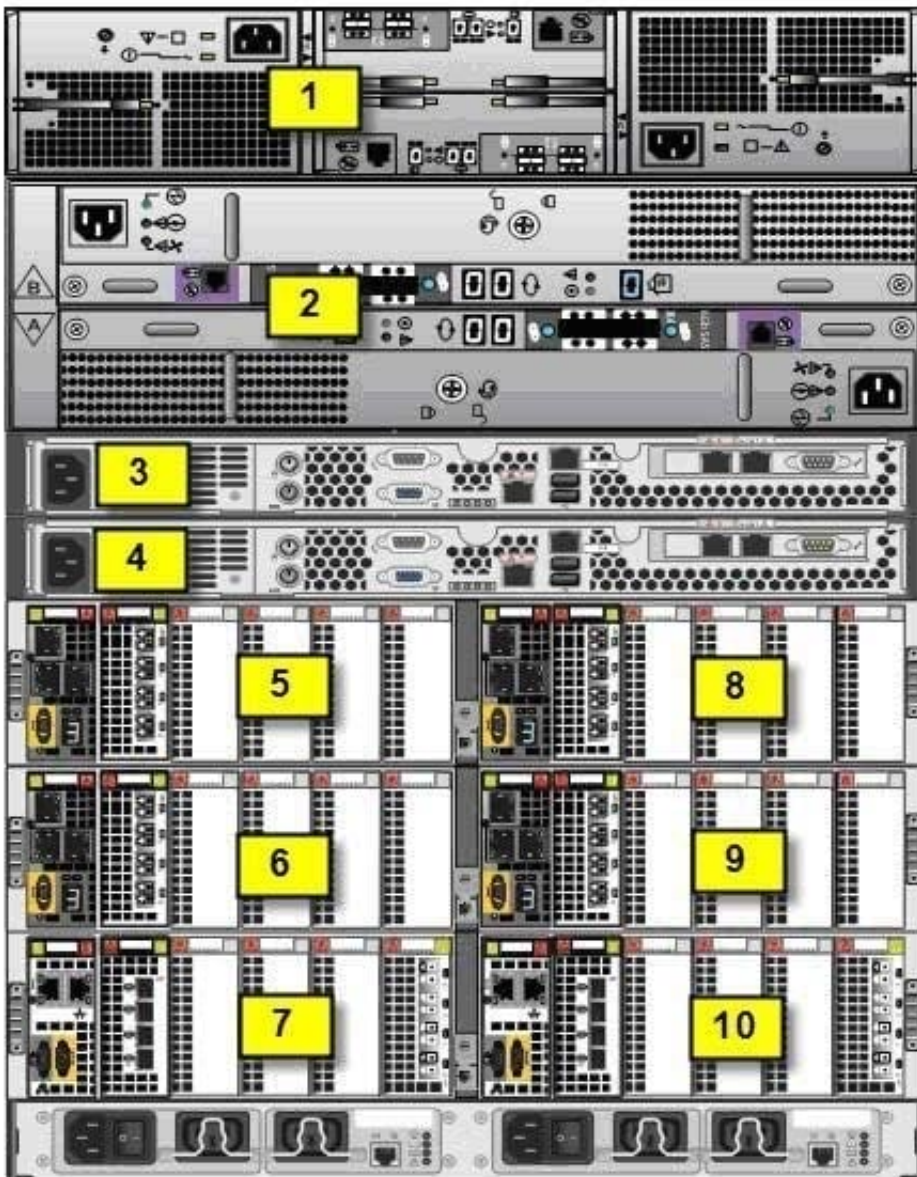
C. VNX Installation Toolkit

D. VNX Product Support Bulletins

Correct Answer: A

**QUESTION 13**

Refer to the exhibit.



Where is DM 3 located?

A. Location 6

B. Location 5



C. Location 7

D. Location 10

Correct Answer: A

---

## QUESTION 14

Which function is supported by Unisphere Service Manager?

A. Pausing a File OE upgrade

B. Reverting to a Block OE code level

C. NAS code patch (DART image) upgrades

D. VNX VG2 or VG8 Gateway system upgrades

Correct Answer: A

---

## QUESTION 15

When installing a new VNX Gateway system, which utility or tool can be used to install the VNX OE for File software?

A. PuTTY

B. Unisphere VNX Client

C. VNX Installation Assistant

D. Unisphere Service Manager

Correct Answer: A

[E20-690 PDF Dumps](#)

[E20-690 VCE Dumps](#)

[E20-690 Exam Questions](#)