

E20-340^{Q&As}

Clariion solutions implementation

Pass EMC E20-340 Exam with 100% Guarantee

Free Download Real Questions & Answers **PDF** and **VCE** file from:

<https://www.leads4pass.com/e20-340.html>

100% Passing Guarantee
100% Money Back Assurance

Following Questions and Answers are all new published by EMC
Official Exam Center

-  **Instant Download** After Purchase
-  **100% Money Back** Guarantee
-  **365 Days** Free Update
-  **800,000+** Satisfied Customers



QUESTION 1

While performing an NDU what must be done to bypass a rule check?

- A. Enable Engineering mode.
- B. Log in as a Global user.
- C. Log in as a Local User.
- D. Verify FLARE code is committed.

Correct Answer: A

QUESTION 2

Which two scenarios can be implemented in iSCSI and FC SAN?

- a.
Single server connected to both a CLARiiON FC and a CLARiiON iSCSI storage system.
- b.
NIC and iSCSI HBA connections mixed in the same server.
- c.
Servers with iSCSI HBAs and servers with NICs connected to the same iSCSI storage system.
- d.
Servers with HBAs and servers with iSCSI HBAs connected to the same storage system.

- A.
C and D
- B.
A and C
- C.
A and B
- D.
B and D

Correct Answer: A

QUESTION 3

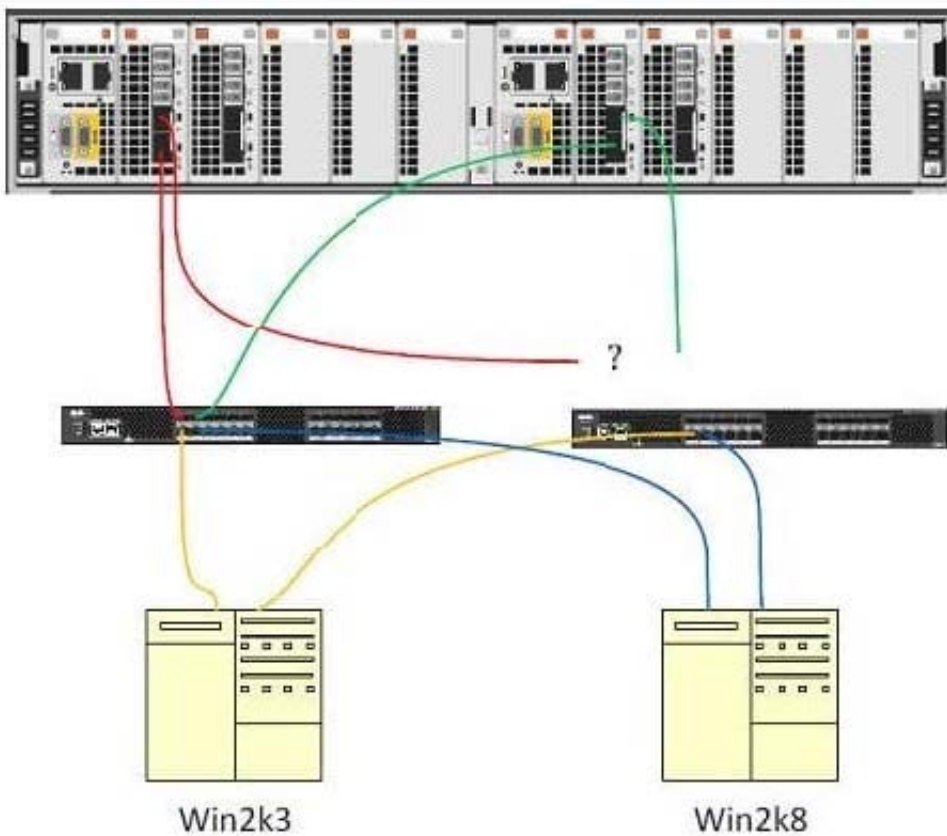
When working with FLARE 30, which tool is required when upgrading FLARE or performing a DAE upgrade?

- A. Unisphere Service Manager
- B. Unisphere Server Utility
- C. Unisphere Initialization Utility
- D. NDU Upgrade Tool

Correct Answer: A

QUESTION 4

Refer to the exhibit.



A customer has a two-fabric SAN with hosts and a single CX4-480 cabled redundantly to both switches. SPA port 0 is plugged in to port 0 of Switch A. According to EMC best practice, which SP port should be plugged in to port 0 of Switch B?

- A. A1

B. B0

C. B1

D. A2

Correct Answer: A

QUESTION 5

In which directory does the initiatorname.iscsi file reside on a Linux host?

A. /etc/

B. /proc/scsi/scsi

C. /proc/scsi

D. /sbin

Correct Answer: A

QUESTION 6

A customer would like to extend their CX4 cache after purchasing Flash drives.

Which Unisphere dialog should be used to configure this feature?

A. Storage System Properties, FAST Cache tab

B. Storage SP Properties, Cache tab

C. Storage SP Properties, SP Memory tab

D. Storage System Properties, SP Cache

Correct Answer: A

QUESTION 7

A customer has activated a snapshot on a host and performed a complex simulation using the data on it. They now wish to use the simulation results on a different host without affecting the original production LUN. How can they achieve this?

A. Copy the results over the LAN to the additional host

B. Take a snapshot of the results and present to the other host

C. De-activate the snapshot and activate to the other host

D. Clone the results and present to the other host

Correct Answer: A

QUESTION 8

Which Unisphere drop-down menu item allows the user to organize LUNs?

- A. Folders
- B. LUNs
- C. Storage Groups
- D. Pools/RAID Groups

Correct Answer: A

QUESTION 9

What is the maximum number of supported paths per LUN when using ALUA with PowerPath?

- A. 16
- B. 8
- C. 32
- D. 64

Correct Answer: A

QUESTION 10

A new customer has expressed interest in upgrading their FCIP infrastructure. Currently their regional office supports over 180 users. They would like to obtain storage media encryption capability and eventually add RecoverPoint.

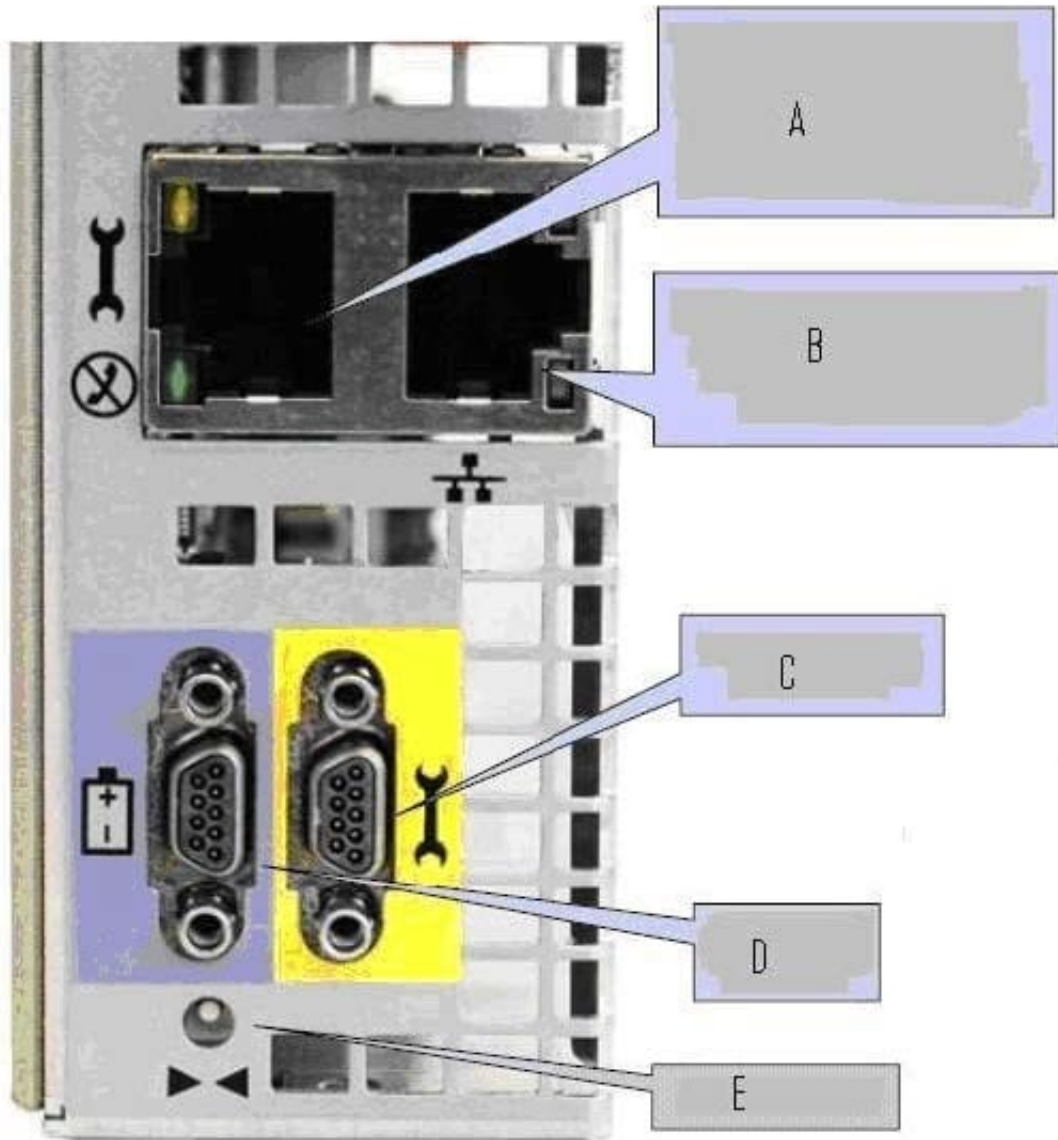
Which solution would you recommend?

- A. MDS-9506 with the multi-services switching module
- B. MDS-9506 with the storage services module
- C. MDS-9509 with the storage services node
- D. MDS-9509 with an MDS 48-port FC module

Correct Answer: A

QUESTION 11

Refer to the exhibit.



Which port has a fixed IP and subnet mask?

- A. A
- B. B
- C. C
- D. D
- E. E

Correct Answer: A

QUESTION 12

A customer's Windows 2008 server has four NICs connected to the private subnet used for iSCSI traffic. Server IP parameters are left at the default settings. How will iSCSI I/O traffic be distributed across the NICs?

- A. One NIC will carry iSCSI traffic and the rest will be in standby.
- B. The four NICs will carry iSCSI traffic in a round-robin pattern.
- C. The four NICs will be divided into two active/passive pairs.
- D. iSCSI traffic will be balanced across all four NICs.

Correct Answer: A

QUESTION 13

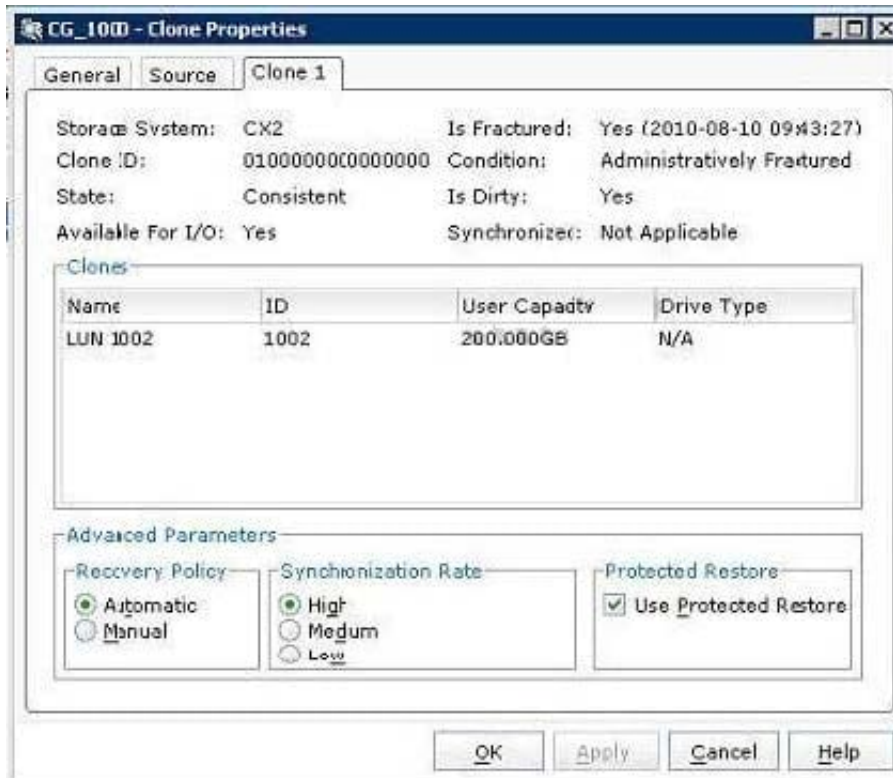
A customer would like to configure NTP using Unisphere. What is the minimum polling time allowed for NTP?

- A. 30 minutes
- B. 60 minutes
- C. 15 minutes
- D. 10 minutes

Correct Answer: A

QUESTION 14

Refer to the exhibit.



Which statement describes the state of the clone?

- A. It has been modified by its owning host.
- B. It cannot be incrementally synchronized.
- C. It contains exactly the same data as the source LUN.
- D. It uses the same drive type as the source LUN.

Correct Answer: A

QUESTION 15

A user with a CX4-480 tries to clone a Fibre Channel source LUN. The operation fails.

What could be the cause of the failure?

- A. No free LUN of the correct size
- B. One CPL is 1024 MB and the other is 2048 MB in size
- C. Insufficient free space in the reserved LUN pool
- D. The fracture log has reached capacity

Correct Answer: A

[E20-340 PDF Dumps](#)

[E20-340 VCE Dumps](#)

[E20-340 Exam Questions](#)