

E20-005^{Q&As}

Backup Recovery Systems and Architecture Exam

Pass EMC E20-005 Exam with 100% Guarantee

Free Download Real Questions & Answers **PDF** and **VCE** file from:

<https://www.leads4pass.com/e20-005.html>

100% Passing Guarantee
100% Money Back Assurance

Following Questions and Answers are all new published by EMC
Official Exam Center

- ⚙ **Instant Download** After Purchase
- ⚙ **100% Money Back** Guarantee
- ⚙ **365 Days** Free Update
- ⚙ **800,000+** Satisfied Customers



QUESTION 1

You need to copy Oracle data from a development server running Windows to a test server running Linux. How is this done?

- A. Oracle online backup
- B. Oracle offline backup
- C. Linux dd command
- D. Database export

Correct Answer: D

QUESTION 2

A business has a recovery point objective (RPO) of nine hours. What does this RPO mean in the event of a disaster?

- A. No more than nine hours of production data can be lost
- B. Restore from backup must occur within nine hours
- C. Production must be resumed within nine hours
- D. A backup copy of the production data must be obtained within nine hours

Correct Answer: A

QUESTION 3

Which process provides increased protection of data from both logical and physical errors and reduces the exposure to data loss?

- A. Continuous data protection
- B. Asynchronous replication
- C. Synchronous replication
- D. Array-based replication

Correct Answer: A

QUESTION 4

Refer to the exhibit.

Storage Node A**Storage Node B****VTL Appliance**

A company is implementing a virtual tape library (VTL) appliance in their environment. The appliance is physically connected to the SAN switch in a FC-AL topology. Storage nodes are also physically connected to the SAN switch as shown.

What needs to be done so that each storage node can see the appliance?

- A. Zone each storage node to the appliance
- B. Reconfigure the topology from FC-AL to FC-SW
- C. Configure the operating system tape drivers on the storage nodes
- D. Connect the backup server to the SAN switch

Correct Answer: A

QUESTION 5

In Volume Shadow Copy Service, what is the role of the I/O interceptor?

- A. Copies data from source to virtual volume before the write to source volume is allowed
- B. Copies data from source to virtual volume after the write to source volume is allowed
- C. Leaves the source volume unchanged and writes to virtual volume
- D. Writes new data to both source volume and virtual volume

Correct Answer: A

QUESTION 6

A customer backup policy must meet the RPO management assigns. What backup configuration items must be considered to achieve the appropriate RPO?

- A. Retention periods and granularity
- B. Client and server parallelism
- C. Multiplexing and multistreaming
- D. Target backup devices

Correct Answer: A

QUESTION 7

A customer wants to run backups for unstructured client data where the level of granularity can be sacrificed for better performance. Which method for backing up the data best fits this situation?

- A. Raw device dump
- B. Cold backup
- C. File copy
- D. Hot backup

Correct Answer: A

QUESTION 8

Which deduplication technology stores data to disk before performing deduplication?

- A. Post Process
- B. Client
- C. Inline
- D. Source

Correct Answer: A

QUESTION 9

A backup environment has 20 GB of data with 10 percent initial commonality. The data is backed up to a target-based deduplication system on a full, every day backup schedule. After the first backup, 5 GB of data is changed. The same data set is backed up every day.

How much data is sent over the network on the first and second backups?

- A. 20 GB for the first backup; 20 GB for the second backup
- B. 20 GB for the first backup; 5 GB for the second backup
- C. 18 GB for the first backup; 4.5 GB for the second backup
- D. 18 GB for the first backup; 18 GB for the second backup

Correct Answer: A

QUESTION 10

Which Microsoft Exchange Server 2007 feature supports single mailbox recovery?

- A. Recovery Database
- B. Database Availability Group
- C. Recovery Storage Group
- D. Checkpoint file

Correct Answer: C

QUESTION 11

A backup administrator has initiated a restore from a physical tape library. Data did not begin transferring back to the storage node until a minute later.

What is the most likely reason for the delay?

- A. The tape cartridge needs to be loaded and validated.
- B. The data is multiplexed on tape.
- C. The tape library is offline.
- D. The backup server must find the backup metadata.

Correct Answer: A

QUESTION 12

What is the purpose of a disaster recovery backup?

- A. Complete system and file system recovery
- B. Individual file recovery

C. Keep data for extended periods of time

D. Provide copies of data to others

Correct Answer: C

QUESTION 13

Where does backup metadata reside when target-based deduplication technology is used?

A. Backup server

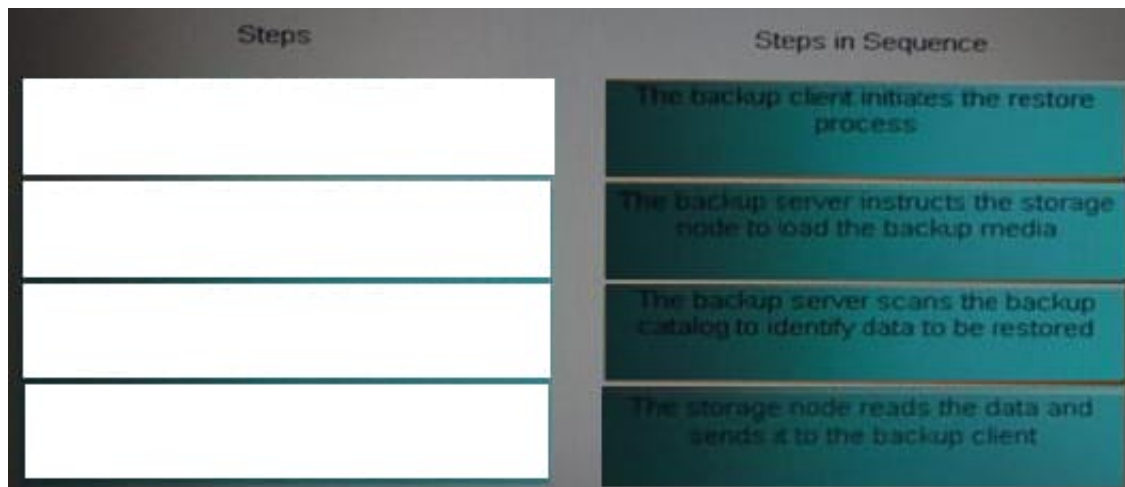
B. Storage node

C. Backup client

D. Deduplication node

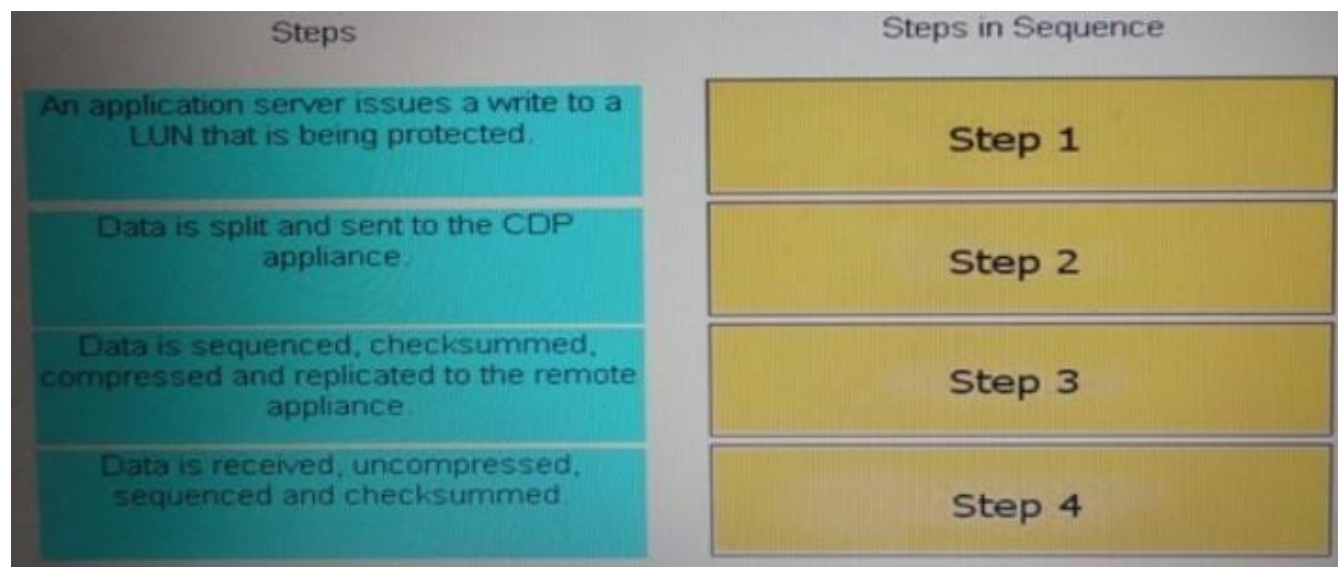
Correct Answer: A

QUESTION 14

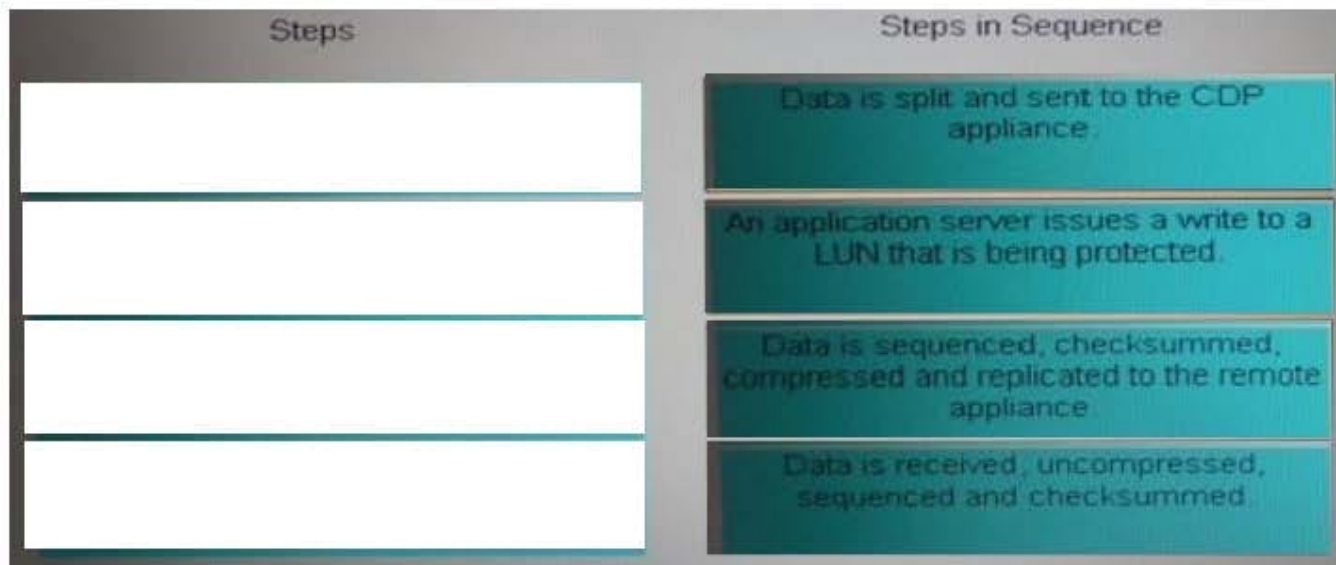


What is the data flow from the host to the production volume during the CDP remote protection process?

Select and Place:



Correct Answer:



QUESTION 15

A backup administrator wants to leverage the replication feature available on the storage array as an alternate source for backups. What is an advantage of this approach?

- A. Removes the burden on the production LUNs during backup
- B. Improves RPO
- C. Enables backups to be performed without a storage node
- D. Decreases storage utilization

Correct Answer: A

[E20-005 PDF Dumps](#)

[E20-005 Practice Test](#)

[E20-005 Study Guide](#)