

DES-5121^{Q&As}

Specialist - Implementation Engineer - Campus Networking Exam

Pass EMC DES-5121 Exam with 100% Guarantee

Free Download Real Questions & Answers **PDF** and **VCE** file from:

<https://www.leads4pass.com/des-5121.html>

100% Passing Guarantee
100% Money Back Assurance

Following Questions and Answers are all new published by EMC
Official Exam Center

-  **Instant Download** After Purchase
-  **100% Money Back** Guarantee
-  **365 Days** Free Update
-  **800,000+** Satisfied Customers



QUESTION 1

In a PoE environment, what information does the Network Policy TLV exchange between the PSE and PD?

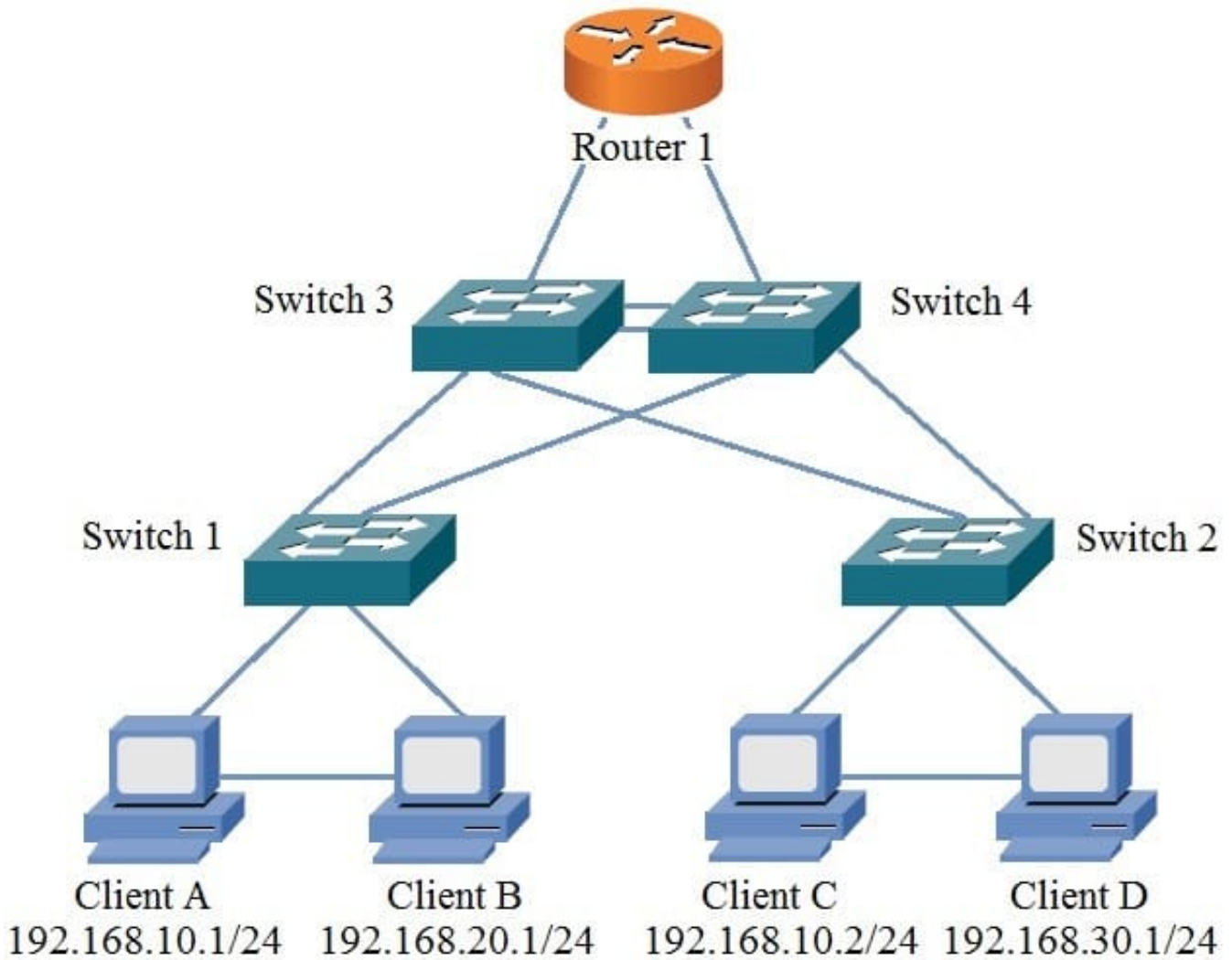
- A. Required Power, VLAN ID, and DSCP Value
- B. VLAN ID, IEEE Priority, and DSCP Value
- C. IEEE Priority, Required Power, and VLAN ID
- D. DSCP Value, Required Power, and IEEE Priority

Correct Answer: B

Reference: http://ftp.dell.com/manuals/all-products/esuprt_ser_stor_net/esuprt_networking/poweredge-m-io-aggregator_Concept-Guide4_en-us.pdf page 162

QUESTION 2

Refer to the Exhibit.



If Client B sends a packet to Client A, what is the highest level of the network hierarchy that the packet will transverse?

- A. Distribution
- B. Network
- C. Access
- D. Core

Correct Answer: D

QUESTION 3

If a VRRP Master router is rebooted, what is the default behavior once it comes back online?

- A. An election occurs to determine which router will have the Master role
- B. Original VRRP Master will take back control of the Master role
- C. Original VRRP Backup will retain the Master role

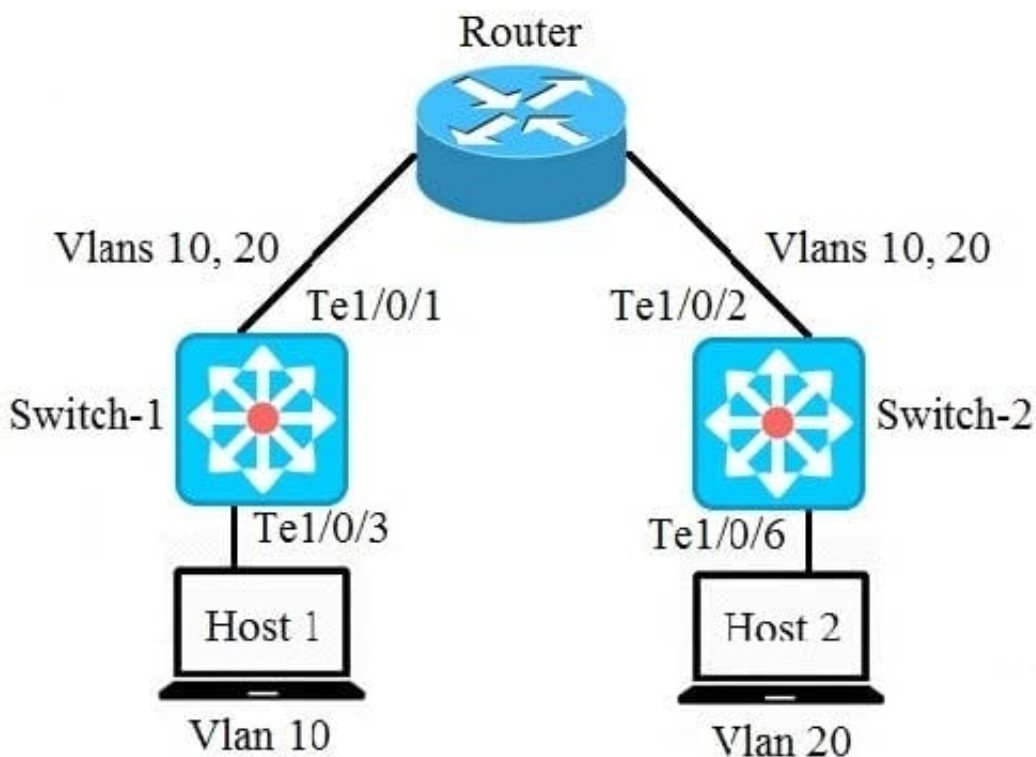
D. VRRP Master role is determined by the router with the lowest MAC address

Correct Answer: B

QUESTION 4

```
Switch-1(config)# interface tengigabitethernet 1/0/1 Switch-1(config)# switchport mode access Switch-1(config)# switchport trunk allowed vlan 10, 20 Switch-1(config)# Switch-1(config)# interface tengigabitethernet 1/0/3 Switch-1(config)# switchport mode access Switch-1(config)# switchport access vlan 10
```

```
Switch-2(config)# interface tengigabitethernet 1/0/2 Switch-2(config)# switchport mode trunk Switch-2(config)# switchport trunk allowed vlan 10, 20 Switch-2(config)# Switch-2(config)# interface tengigabitethernet 1/0/6 Switch-2(config)# switchport mode access Switch-2(config)# switchport access vlan 20
```



A network administrator is troubleshooting why Host 1 cannot communicate with Host 2.

Based on the switch output shown in the exhibit, what is the reason for the communication issue?

- A. Port Te1/0/1 on Switch-1 is configured incorrectly
- B. Port Te1/0/2 on Switch-2 is configured incorrectly
- C. Port Te1/0/3 for Host 1 is configured incorrectly on Switch-1
- D. Port Te1/0/6 for Host 2 is configured incorrectly on Switch-2

Correct Answer: A

QUESTION 5

What happens when a match is found for an ACL with 15 entries?

- A. All packets which match that entry are forwarded
- B. Action from that entry is performed and the rest of the entries in the ACL are processed
- C. All packets which match that entry are dropped
- D. Action from that entry is performed and the ACL is exited

Correct Answer: D

QUESTION 6

A user's host with an IP address of 172.16.1.22/24 is attempting to FTP a file from the server with IP address 10.1.1.99; however, they are unable to connect.

Which access-list is preventing this traffic?

- A. # ip access-list ACL1 # deny ip any host 10.1.1.99
- B. # ip access-list ACL2 # permit ip 172.16.1.0 0.0.0.255 any
- C. # ip access-list ACL3 # deny ip any 172.16.2.0 0.0.0.255
- D. # ip access-list ACL4 # permit ip host 172.16.1.22 host 10.1.1.99

Correct Answer: A

QUESTION 7

If a group of routers are running VRRP with a virtual router ID of 155, which MAC address will be used to respond to the ARP requests for the virtual IP?

- A. 0000-5E00-0155
- B. 0000-5E00-019B
- C. 0001-5500-005E
- D. 0001-9B00-005E

Correct Answer: B

QUESTION 8

A user's workstation is connected to an IP phone that is connected to a Dell EMC N-Series switch. Which type of traffic is typically tagged or untagged?

- A. Data = tagged, Voice = untagged
- B. Data = untagged, Voice = untagged
- C. Data = tagged, Voice = tagged
- D. Data = untagged, Voice = tagged

Correct Answer: D

Reference: <https://www.dell.com/support/article/en-us/how12385/how-to-enable-the-voice-vlan-feature-on-dell-emc-networking-n-series-switches?lang=en>

QUESTION 9

Which spanning tree feature will prevent unnecessary timeouts from DHCP servers?

- A. PortFast
- B. Loop Guard
- C. BPDU Flooding
- D. Root Guard

Correct Answer: A

Reference: <https://www.dell.com/community/Networking-General/Advice-on-basic-STP-and-network-design/td-p/4434346>

QUESTION 10

N4032F#show interfaces status N4032F#show interfaces port-channel 1

Port	Description	Duplex	Speed	Neg	Link State	Flow Ctrl	M	VLAN
Te1/0/5		Full	1000	Auto	Up	Off	A	1
Te1/0/6		Full	1000	Auto	Up	Off	A	1

Port Channel	Description	Link State	M	VLAN
Pol		Up	A	1

Channel	Ports	Ch-Type	Hash Type	Min-Links	Local Prf	Rx Util	Tx Util
Pol	Active: Te1/0/5, Te1/0/6	Dynamic	7	1	Disabled	0	0

Hash Algorithm Type 1 - Source MAC, VLAN, EtherType, source module and port Id 2 - Destination MAC, VLAN, EtherType, source module and port Id 3 - Source IP and source TCP/UDP port 4 - Destination IP and destination TCP/UDP port 5 - Source/Destination MAC, VLAN, EtherType, source MODID/port 6 - Source/Destination IP and

source/destination TCP/UDP port 7 - Enhanced hashing mode

A network administrator has reported poor network performance to an application server. After reviewing the logs, you determine that the server is using 100 percent of the available bandwidth on its network port. As shown in the exhibit, you configure a second link and a 2-member port-channel to an application server in an effort to increase performance. However, during testing, the network performance has not improved.

What is a possible reason why there has been no increase in the performance?

- A. Application is using a single I/O flow
- B. File server needs to be configured with LACP
- C. Minimum links needs to be increased to "2"
- D. Port-channel needs load balancing enabled

Correct Answer: A

QUESTION 11

What describes the POE+ capabilities of the Dell EMC N1100P Series?

- A. Supported on any of the first half of switch ports or the first 12 switch ports, whichever is fewer. May only be enabled on a maximum of half of the supported ports.
- B. Supported on any of the first 12 switch ports or all switch ports, whichever is fewer. May only be enabled on a maximum of half of the supported ports.
- C. Supported on all of the first 12 switch ports or all switch ports, whichever is fewer.
- D. Supported on all of the first half of switch ports or the first 12 switch ports, whichever is fewer.

Correct Answer: B

QUESTION 12

A customer is upgrading their campus network Access layer switches. They require 2-10GbE uplinks, 48-1GbE ports with PoE, and stacking capability of up to 12 units. Which Dell EMC N-Series model will meet the customer's requirements?

- A. N1100 Series
- B. N1500 Series
- C. N2000 Series
- D. N4000 Series

Correct Answer: C

Reference: https://www.dellemc.com/resources/en-us/asset/data-sheets/products/networking/dell_emc_powerswitch_n2000_series_specsheet.pdf

QUESTION 13

Which commands should a network administrator use to configure a RADIUS server on a Dell EMC N-Series switch?

- A. Switch-1(config)# radius 10.1.1.111 Switch-1(config-radius)# name RADIUS-Server Switch-1(config-radius)# key secretkey
- B. Switch-1(config)# radius server auth 10.1.1.111 Switch-1(config-radius)# name RADIUS-Server Switch-1(config-radius)# key "secretkey"
- C. Switch-1(config)# radius auth 10.1.1.111 Switch-1(config-radius)# name "RADIUS-Server" Switch-1(config-radius)# key "secretKey"
- D. Switch-1(config)# radius auth server 10.1.1.111 Switch-1(config-radius)# name RADIUS-Server Switch-1(config-radius)# key "secretKey"

Correct Answer: B

QUESTION 14

You need to configure OSPF on a DNOS 6 switch and have entered the following:

```
Switch-1(config)# ip routing Switch-1(config)# interface vlan 20 Switch-1(config-if-vlan20)# ip address 10.1.20.1 255.255.255.0
```

```
Switch-1(config)# router ospf Switch-1(config-router)# router-id 10.1.1.1
```

Based on the information referenced above, what is missing from the configuration?

- A. area 0 is missing from the ip routing command
- B. ip ospf area 0 is missing from the interface vlan 20 section
- C. router ospf is missing the routing instance
- D. area 0 is missing from the router-id command

Correct Answer: B

QUESTION 15

A Master switch failed in a Dell EMC N-Series three-unit switch stack and the Standby switch assumed the role of Master. What happens when the failed Master switch rejoins the stack after the new Master has taken over?

- A. Switch joins the stack as the Standby
- B. Switch must be manually configured to rejoin the stack
- C. Switch joins the stack as a Member
- D. Switch joins the stack and resumes as the Master

Correct Answer: C

[DES-5121 PDF Dumps](#)

[DES-5121 Practice Test](#)

[DES-5121 Study Guide](#)