

DATA-ARCHITECT^{Q&As}

Salesforce Certified Data Architect

Pass Salesforce DATA-ARCHITECT Exam with 100% Guarantee

Free Download Real Questions & Answers **PDF** and **VCE** file from:

<https://www.leads4pass.com/data-architect.html>

100% Passing Guarantee
100% Money Back Assurance

Following Questions and Answers are all new published by Salesforce
Official Exam Center

- ⚙ **Instant Download** After Purchase
- ⚙ **100% Money Back** Guarantee
- ⚙ **365 Days** Free Update
- ⚙ **800,000+** Satisfied Customers



QUESTION 1

Universal Containers (UC) is implementing a new customer categorization process where customers should be assigned to a Gold, Silver, or Bronze category if they've purchased UC's new support service. Customers are expected to be evenly distributed across all three categories. Currently, UC has around 500,000 customers, and is expecting 1% of existing non-categorized customers to purchase UC's new support service every month over the next five years. What is the recommended solution to ensure long-term performance, bearing in mind the above requirements?

- A. Implement a new global picklist custom field with Gold, Silver, and Bronze values and enable it in Account.
- B. Implement a new picklist custom field in the Account object with Gold, Silver, and Bronze values.
- C. Implement a new Categories custom object and a master-detail relationship from Account to Category.
- D. Implement a new Categories custom object and create a lookup field from Account to Category.

Correct Answer: B

Explanation: The recommended solution to ensure long-term performance for the customer categorization process is to implement a new picklist custom field in the Account object with Gold, Silver, and Bronze values. A picklist field is a

simple and efficient way to store a predefined set of values for a record. A picklist field has the following benefits:

It allows you to easily filter, sort, and group records by their category values, which can help you analyze and segment your customers. It does not require creating any additional objects or relationships, which can reduce the data model

complexity and maintenance overhead. It supports large data volumes and can handle millions of records without affecting performance or scalability.

QUESTION 2

Get Cloudy Consulting monitors 15,000 servers, and these servers automatically record their status every 10 minutes. Because of company policy, these status reports must be maintained for 5 years. Managers at Get Cloudy Consulting need access to up to one week's worth of these status reports with all of their details.

An Architect is recommending what data should be integrated into Salesforce and for how long it should be stored in Salesforce.

Which two limits should the Architect be aware of? (Choose two.)

- A. Data storage limits
- B. Workflow rule limits
- C. API Request limits
- D. Webservice callout limits

Correct Answer: AC

Explanation: Data storage limits and API request limits are two important factors that affect the data integration and storage in Salesforce. Data storage limits determine how much data can be stored in Salesforce, and API request limits determine how many API calls can be made to Salesforce in a 24-hour period. Both of these limits depend on the edition and license type of the Salesforce org. Workflow rule limits and webservice callout limits are not directly related to data integration and storage, but rather to business logic and external services.

QUESTION 3

Universal Containers (UC) is implementing its new Internet of Things technology, which consists of smart containers that provide information on container temperature and humidity updated every 10 minutes back to UC. There are roughly 10,000 containers equipped with this technology with the number expected to increase to 50,000 across the next five years. It is essential that Salesforce user have access to current and historical temperature and humidity data for each container. What is the recommended solution?

- A. Create new custom fields for temperature and humidity in the existing Container custom object, as well as an external ID field that is unique for each container. These custom fields are updated when a new measure is received.
- B. Create a new Container Reading custom object, which is created when a new measure is received for a specific container. The Container Reading custom object has a master- detail relationship to the container object.
- C. Create a new Lightning Component that displays last humidity and temperature data for a specific container and can also display historical trends obtaining relevant data from UC\\s existing data warehouse.
- D. Create a new Container Reading custom object with a master-detail relationship to Container which is created when a new measure is received for a specific container. Implement an archiving process that runs every hour.

Correct Answer: D

Explanation: The recommended solution for Universal Containers (UC) to implement its new Internet of Things technology is to create a new Container Reading custom object with a master-detail relationship to Container which is created when a new measure is received for a specific container. Implement an archiving process that runs every hour. This solution would allow UC to store and access current and historical temperature and humidity data for each container on Salesforce, and use reports and dashboards to analyze it. However, since UC expects a large volume of data over time, they should implement an archiving process that moves data off-platform after a certain period of time to avoid hitting the Org data storage limit and maintain optimal performance. The other options are not recommended, as they would either not store the historical data on Salesforce, or create too many custom fields on the Container object that could impact performance and usability.

QUESTION 4

Universal containers is implementing Salesforce lead management. UC Procure lead data from multiple sources and would like to make sure lead data as company profile and location information. Which solution should a data architect recommend to make sure lead data has both profile and location information?

- A. Ask sales people to search for populating company profile and location data
- B. Run reports to identify records which does not have company profile and location data
- C. Leverage external data providers populate company profile and location data
- D. Export data out of Salesforce and send to another team to populate company profile and location data

Correct Answer: C

Explanation: The best solution to make sure lead data has both profile and location information is to leverage external data providers to populate company profile and location data. This is because external data providers can enrich lead data with additional information from third-party sources, such as Dun and Bradstreet, ZoomInfo, or Clearbit. This can help improve lead quality, segmentation, and conversion. Salesforce supports integrating with external data providers using Data.com Clean or other AppExchange solutions². Asking sales people to search for populating company profile and location data is inefficient and prone to errors. Running reports to identify records which do not have company profile and location data is useful, but does not solve the problem of how to populate the missing data. Exporting data out of Salesforce and sending to another team to populate company profile and location data is cumbersome and time-consuming.

QUESTION 5

Which API should a data architect use if exporting 1million records from Salesforce?

- A. Bulk API
- B. REST API
- C. Streaming API
- D. SOAP API

Correct Answer: A

Explanation: Using Bulk API to export 1 million records from Salesforce is the best option. Bulk API is a RESTful API that allows you to perform asynchronous operations on large sets of data. You can use Bulk API to create, update, delete, or query millions of records in batches. Bulk API is optimized for performance and scalability, and it can handle complex data loading scenarios.

QUESTION 6

Universal Containers (UC) has implemented a master data management strategy, which uses a central system of truth, to ensure the entire company has the same customer information in all systems. UC customer data changes need to be accurate at all times in all of the systems. Salesforce is the identified system of record for this information.

What is the correct solution for ensuring all systems using customer data are kept up to date?

- A. Send customer data nightly to the system of truth in a scheduled batch job.
- B. Send customer record changes from Salesforce to each system in a nightly batch job.
- C. Send customer record changes from Salesforce to the system of truth in real time.
- D. Have each system pull the record changes from Salesforce using change data capture.

Correct Answer: C

Explanation: Having each system pull the record changes from Salesforce using change data capture (option D) is the correct solution for ensuring all systems using customer data are kept up to date, as it allows the systems to subscribe to real-time events from Salesforce and receive notifications when customer records are created, updated, deleted, or undeleted. Sending customer data nightly to the system of truth in a scheduled batch job (option A) or sending customer record changes from Salesforce to each system in a nightly batch job (option B) are not good solutions, as they may cause data latency and inconsistency, and they do not provide real-time updates. Sending customer record changes

from Salesforce to the system of truth in real time (option C) is also not a good solution, as it does not address how the other systems will receive the updates from the system of truth.

QUESTION 7

NTO has outgrown its current salesforce org and will be migrating to new org shortly. As part of this process NTO will be migrating all of its metadata and data. NTO's data model in the source org has a complex relationship hierarchy with several master detail and lookup relationships across objects, which should be maintained in target org.

What 3 things should a data architect do to maintain the relationship hierarchy during migration?

Choose 3 answers:

- A. Use data loader to export the data from source org and then import or Upsert into the target org in sequential order.
- B. Create a external id field for each object in the target org and map source record ID's to this field.
- C. Redefine the master detail relationship fields to lookup relationship fields in the target org.
- D. Replace source record ID's with new record ID's from the target org in the import file.
- E. Keep the relationship fields populated with the source record ID's in the import file.

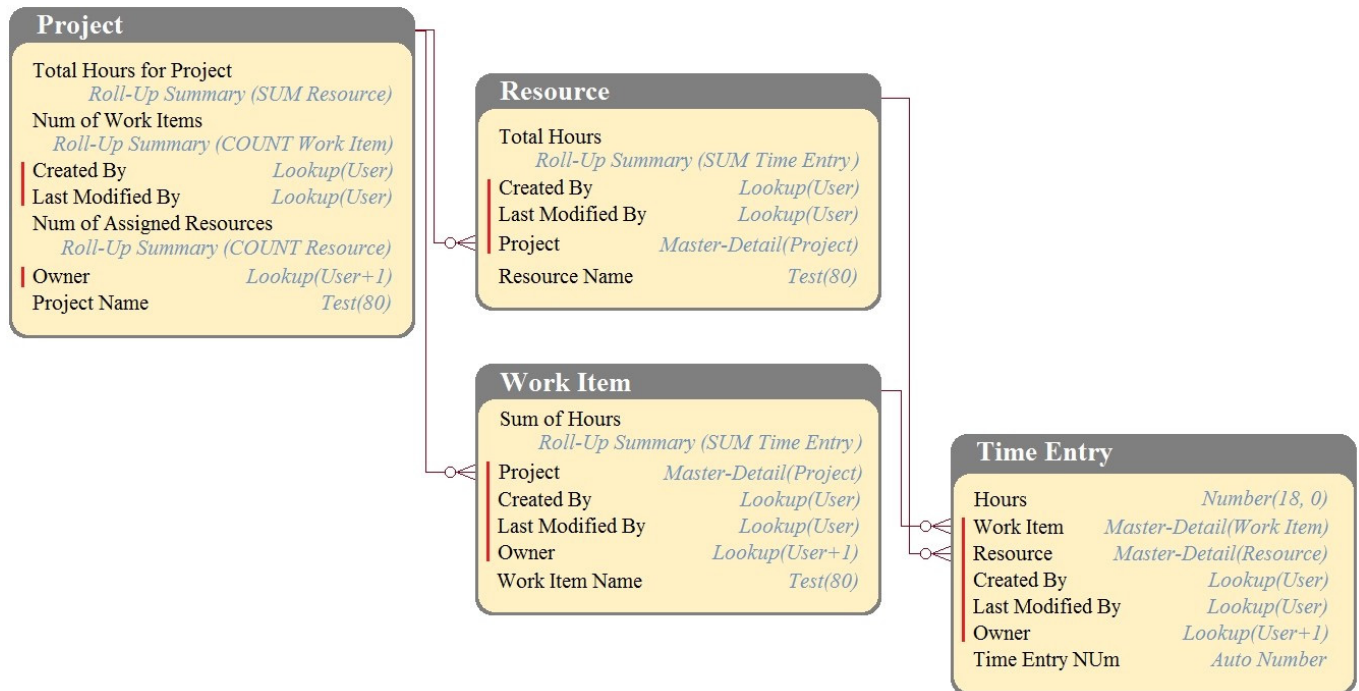
Correct Answer: ABD

Explanation: The correct answer is A, B, and D. To maintain the relationship hierarchy during migration, a data architect should use data loader to export the data from source org and then import or upsert into the target org in sequential order, create an external ID field for each object in the target org and map source record IDs to this field, and replace source record IDs with new record IDs from the target org in the import file. These steps will ensure that the records are linked correctly and the relationships are preserved. Option C is incorrect because redefining the master detail relationship fields to lookup relationship fields in the target org will change the behavior and security of the data model. Option E is incorrect because keeping the relationship fields populated with the source record IDs in the import file will cause errors and prevent the records from being imported.

QUESTION 8

DreamHouse Realty has a data model as shown in the image. The Project object has a private sharing model, and it has Roll-Up summary fields to calculate the number of resources assigned to the project, total hours for the project, and the number of work items associated to the project.

There will be a large amount of time entry records to be loaded regularly from an external system into Salesforce.



What should the Architect consider in this situation?

- A. Load all data after deferring sharing calculations.
- B. Calculate summary values instead of Roll-Up by using workflow.
- C. Calculate summary values instead of Roll-Up by using triggers.
- D. Load all data using external IDs to link to parent records.

Correct Answer: A

Explanation: According to the exam guide, one of the objectives is to "describe the use cases and considerations for deferring sharing calculations"¹. This implies that option A is the correct way to load large amounts of data into Salesforce without affecting performance and data integrity. Deferring sharing calculations allows the data to be loaded first and then the sharing rules to be applied later². Option B is not correct because workflows are not recommended for calculating summary values, as they can cause performance issues and data skew³. Option C is not correct because triggers are also not recommended for calculating summary values, as they can cause governor limit errors and data inconsistency. Option D is not correct because external IDs are used to link records from different systems, not to improve data loading performance.

QUESTION 9

Universal Containers (UC) provides shipping services to its customers. They use Opportunities to track customer shipments. At any given time, shipping status can be one of the 10 values. UC has 200,000 Opportunity records. When creating a new field to track shipping status on opportunity, what should the architect do to improve data quality and avoid data skew?

- A. Create a picklist field, values sorted alphabetically.
- B. Create a Master -Detail to custom object ShippingStatus c.

- C. Create a Lookup to custom object ShippingStatus c.
- D. Create a text field and make it an external ID.

Correct Answer: A

Explanation: To improve data quality and avoid data skew, the data architect should create a picklist field with values sorted alphabetically for tracking shipping status on opportunity. A picklist field ensures that only valid values are entered and prevents typos or variations in spelling. Sorting the values alphabetically makes it easier for users to find and select the correct value. Data skew occurs when a large number of records are owned by a single user or have a single value for a field. Creating a picklist field with a limited number of values does not cause data skew, as long as the distribution of values is balanced and not skewed towards one value.

QUESTION 10

Universal Containers (UC) has a Salesforce org with multiple automated processes defined for group membership processing, UC also has multiple admins on staff that perform manual adjustments to the role hierarchy. The automated tasks and manual tasks overlap daily, and UC is experiencing "lock errors" consistently.

What should a data architect recommend to mitigate these errors?

- A. Enable granular locking.
- B. Remove SOQL statements from Apex Loops.
- C. Enable sharing recalculations.
- D. Ask Salesforce support for additional CPU power.

Correct Answer: A

Explanation: Enabling granular locking (option A) is the best recommendation to mitigate these errors, as it allows finer control over how records are locked during automated or manual processes, and reduces the chances of lock contention or deadlock. Removing SOQL statements from Apex Loops (option B) is a good practice for improving performance and avoiding governor limits, but it does not directly address the lock errors issue. Enabling sharing recalculations (option C) is also not relevant for this issue, as it is used to update sharing rules and recalculate access for records. Asking Salesforce support for additional CPU power (option D) is also not a viable solution, as it does not solve the root cause of the lock errors.

QUESTION 11

To avoid creating duplicate Contacts, a customer frequently uses Data Loader to upsert Contact records into Salesforce. What common error should the data architect be aware of when using upsert?

- A. Errors with duplicate external Id values within the same CSV file.
- B. Errors with records being updated and inserted in the same CSV file.
- C. Errors when a duplicate Contact name is found cause upsert to fail.
- D. Errors with using the wrong external Id will cause the load to fail.

Correct Answer: A

Explanation: Data Loader uses external Id fields to match records in the CSV file with records in Salesforce during an upsert operation. If the CSV file contains duplicate external Id values within the same file, Data Loader will throw an error saying "Duplicate Id Specified" and will not process those records. Therefore, it is important to ensure that the CSV file does not have any duplicate external Id values before using Data Loader to upsert records.

QUESTION 12

Get Cloudy Consulting needs to evaluate the completeness and consistency of contact information in Salesforce. Their sales reps often have incomplete information about their accounts and contacts. Additionally, they are not able to interpret the information in a consistent manner. Get Cloudy Consulting has identified certain "key" fields which are important to their sales reps.

What are two actions Get Cloudy Consulting can take to review their data for completeness and consistency? (Choose two.)

- A. Run a report which shows the last time the key fields were updated.
- B. Run one report per key field, grouped by that field, to understand its data variability.
- C. Run a report that shows the percentage of blanks for the important fields.
- D. Run a process that can fill in default values for blank fields.

Correct Answer: AC

Explanation: Running a report that shows the last time the key fields were updated can help Get Cloudy Consulting identify stale or outdated data and prioritize data cleansing activities. Running a report that shows the percentage of blanks for the important fields can help Get Cloudy Consulting measure the completeness of their data and identify gaps or missing value

QUESTION 13

UC is preparing to implement sales cloud and would like to its users to have read only access to an account record if they have access to its child opportunity record. How would a data architect implement this sharing requirement between objects?

- A. Create a criteria-based sharing rule.
- B. Implicit sharing will automatically handle with standard functionality.
- C. Add appropriate users to the account team.
- D. Create an owner-based sharing rule.

Correct Answer: B

Explanation: Implicit sharing will automatically handle this sharing requirement with standard functionality, as it grants read-only access to parent accounts when users have access to child opportunities. This is also known as account-opportunity sharing³. Creating a criteria-based sharing rule (option A) or an owner-based sharing rule (option D) is not necessary, as they are used to grant additional access based on record criteria or ownership. Adding appropriate users to the account team (option C) is also not required, as it is used to grant access to specific users or groups for individual accounts.

QUESTION 14

DreamHouse Realty has an integration that creates records in a Salesforce Custom Object. The Custom Object has a field marked as required on the page layout. DreamHouse Realty has noticed that many of the records coming from the external system are missing data in this field.

The Architect needs to ensure this field always contains data coming from the source system.

Which two approaches should the Architect take? Choose 2 answers

- A. Set up a Validation Rule to prevent blank values.
- B. Create a Workflow to default a value into this field.
- C. Mark the field required in setup at the field level.
- D. Blame the customer's external system for bad data.

Correct Answer: AC

Explanation: Setting up a Validation Rule to prevent blank values and marking the field required in setup at the field level are two approaches that the Architect should take to ensure that the field always contains data coming from the source system. A Validation Rule can display an error message when a record is created or edited with a blank value for the field, and prevent it from being saved. Marking the field required in setup at the field level can enforce the requirement for all records, regardless of the page layout or the source system. The other options are not effective or recommended for ensuring data quality, as they would either not prevent blank values, not apply to all records, or not address the root cause of the problem

QUESTION 15

(NTO) has multiple salesforce orgs based on geographical reports (AMER, EMEA, APAC). NTO products are in the AMER org and need to be created in the EMEA and APAC after the products are approved.

Which two features should a data architect recommend to share records between salesforce orgs? Choose 2.

- A. Change data capture (CDC)
- B. Salesforce connect.
- C. Federation search
- D. Salesforce 2 Salesforce

Correct Answer: AD

Explanation: The two features that a data architect should recommend to share records between Salesforce orgs are:

Change Data Capture (CDC): This is a feature that publishes change events for changes in Salesforce records, such as create, update, delete, and undelete operations. Change events can be subscribed by external systems or other

Salesforce orgs using various tools, such as Platform Events, Streaming API, or CometD. CDC can help keep data in sync between Salesforce orgs in near real time⁸⁹.

Salesforce to Salesforce (S2S): This is a feature that allows sharing records and related data with other Salesforce orgs that you partner with. You can choose which records and fields to share, and which orgs to share with. You can also

accept updates from the other orgs to keep the data consistent¹⁰. Salesforce Connect is not a good feature to share records between Salesforce orgs because it is intended for integrating external data sources with Salesforce using external

objects. Federation Search is not a good feature to share records between Salesforce orgs because it is intended for searching across multiple Salesforce orgs without sharing data.

[DATA-ARCHITECT PDF
Dumps](#)

[DATA-ARCHITECT VCE
Dumps](#)

[DATA-ARCHITECT Study
Guide](#)