

CTAL-TTA_001^{Q&As}

ISTQB Certified Tester Advanced Level - Technical Test Analyst

Pass ISQI CTAL-TTA_001 Exam with 100% Guarantee

Free Download Real Questions & Answers **PDF** and **VCE** file from:

https://www.leads4pass.com/ctal-tta_001.html

100% Passing Guarantee
100% Money Back Assurance

Following Questions and Answers are all new published by ISQI Official Exam Center

-  **Instant Download** After Purchase
-  **100% Money Back** Guarantee
-  **365 Days** Free Update
-  **800,000+** Satisfied Customers



QUESTION 1

The Bonus Program is perceived by management to be critical. Defects in the program would almost immediately lead to financial loss. In the past an improvement program has been run to implement review based on IEEE 1028. Knowledge and skills on both formal and informal reviews are available. There is also an existing pool of review leaders. Which of the following review types would you choose to review the program? 2 credits [K4]

Number of correct answers: 1

- A. Informal review
- B. Inspection
- C. Walkthrough
- D. Management review

Correct Answer: B

QUESTION 2

The development manager asks you to identify suitable test coverage entry criteria for a component test. Which TWO of the following would you recommend as appropriate for entry criteria to a component testing phase? 2 credits [K3]

Number of correct answers: 2

- A. 100% statement coverage
- B. No critical outstanding defects
- C. Test log available
- D. Code review completed
- E. Static analysis shows no major violations

Correct Answer: DE

QUESTION 3

To address reliability a number of measures will be taken throughout the development and testing process. Select TWO appropriate measures that are typically taken as part of reliability engineering and/or testing of an application. 3 credits [K4]

Number of correct answers: 2

- A. Define Operational Profiles
- B. State Transition Testing
- C. Usability testing

D. Perform design FMEAs

E. Exploratory test

Correct Answer: AD

QUESTION 4

To address the second risk mentioned in the scenario, security testing will be performed. Which test techniques would be most applicable for security testing? 1 credit [K2]

Number of correct answers: 1

A. Boundary Value Analysis

B. Statement Testing

C. Use Cases

D. Fault Attacks

Correct Answer: D

QUESTION 5

A component has been analyzed as being highly critical. Which of the following structure- based test design techniques provides the highest level of coverage? 1 credit [K2]

Number of correct answers: 1

A. Statement testing

B. Decision testing

C. Condition determination testing

D. Multiple condition testing

Correct Answer: C

QUESTION 6

What is the theoretical maximum level of switch coverage that can be achieved for the state diagram above?

1 credit [K2]

Number of correct answers: 1

A. 4

B. 5

C. 6

D. 7

Correct Answer: B

QUESTION 7

scenario:

“Tax system” (Questions 52 – 53)
 Due to new legislation the tax system needs to be updated. For a person that has a salary less than € 20.000, the tax needs to be re-calculated. If the person also has more than two children an additional 10% reduction is applicable.

For equivalence partitioning based on this specification, how many input classes can be determined? 2 credits [K3]

	1	2	3	4	5	6	7	8
C1	1	1	1	1	0	0	0	0
C2	1	1	0	0	1	1	0	0
C3	1	0	1	0	1	0	1	0
A1	X	X						
A2	X							

Number of correct answers: 1

A. 4

B. 5

C. 6

D. 8

Correct Answer: A

QUESTION 8

Based on the state diagram above, how many invalid test cases could be identified in a state table? 2 credits [K3]

Number of correct answers: 1

A. 10

B. 12

C. 14

D. 15

Correct Answer: A

QUESTION 9

At which test level would performance testing most likely be performed? 1 credit [K2] Number of correct answers: 1

A. Component Testing

B. Integration Testing

C. System Testing

D. User Acceptance Testing

Correct Answer: C

QUESTION 10

How many test cases are needed to test code fragment lines 26 ?32 to achieve 100% multiple condition coverage? 2 credits [K3]

Number of correct answers: 1

A. 2

B. 3

C. 4

D. 8

Correct Answer: D

QUESTION 11

How many test cases would be needed to achieve 100% decision coverage? 1 credit [K2] Number of correct answers: 1

A. 1

B. 2

C. 3

D. 4

Correct Answer: A

QUESTION 12

Exhibit: Identify TWO main advantages of this approach to incident management. (3 credits, for 1 out of 2 correct 1 credit) 3 credits [K4]

Questions 63 - 65

A test team is keeping logs of the incidents that they observe. They use a commonly-available word processor to write the incident reports in individual file, which are held in shared storage. They track the incidents along with some incident details, in a spreadsheet.

Number of correct answers: 2

- A. Quick to set up and cheap
- B. Electronic rather than manual
- C. Allows attachments (e.g. screen prints) to be linked to the incident reports
- D. Can easily be integrated with open source tools
- E. Large files are not a problem

Correct Answer: AB

QUESTION 13

Which of the following is the best example of a reliability failure for the application? 1 credit [K2] Number of correct answers: 1

- A. Slow response time
- B. Excessive memory consumption
- C. Random application termination
- D. Failure to encrypt data

Correct Answer: C

QUESTION 14

If you are flying with an economy ticket, there is a possibility that you may get upgraded to business class,

especially if you hold a gold card in the airline's frequent flier program. If you don't hold a gold card, there is a possibility that you will get 'bumped' off the flight if it is full and you check in late. This is shown in the figure hereafter. Note that each box (i.e. statement) has been numbered.

Three tests have been run:

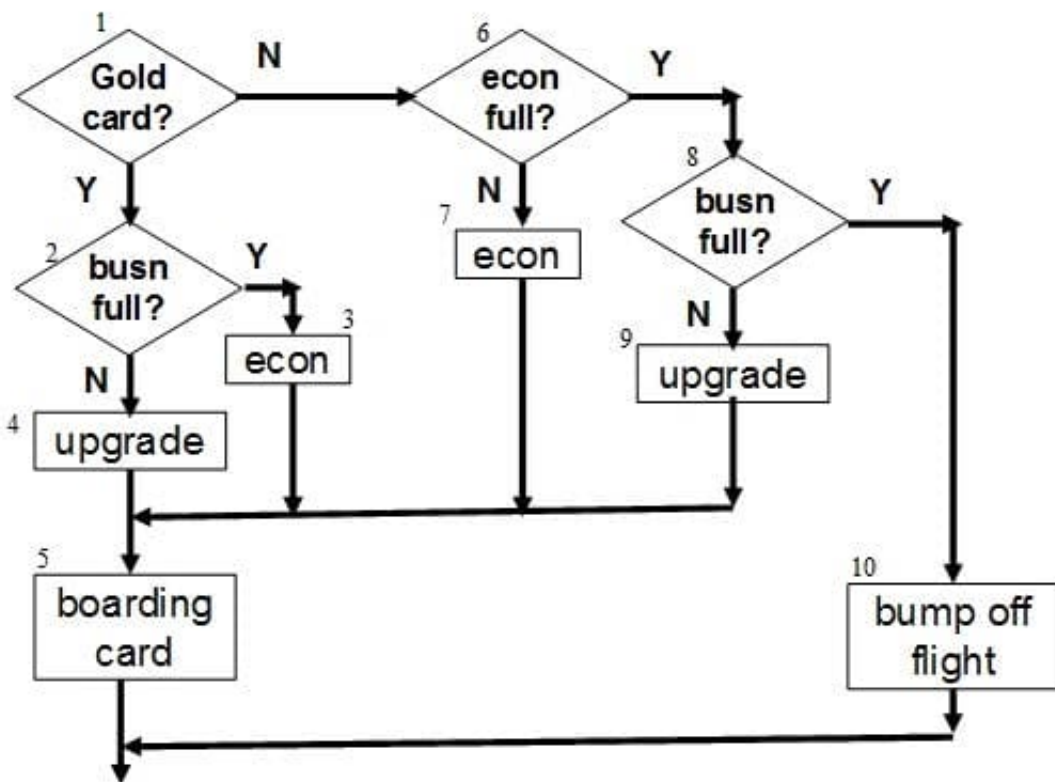
Test 1: Gold card holder who gets upgraded to business class

Test 2: Non-gold card holder who stays in economy

Test 3: A person who is bumped from the flight

What is the statement coverage of these three tests? 2 credits [K4]

Number of correct answers: 1



- A. 60%
- B. 70%
- C. 80%
- D. 90%

Correct Answer: C

QUESTION 15

Exhibit:

Questions 63 - 65

A test team is keeping logs of the incidents that they observe. They use a commonly-available word processor to write the incident reports in individual file, which are held in shared storage. They track the incidents along with some incident details, in a spreadsheet.

You have now also been given the task to identify the key fields for logging the incident reports. So far the following fields have been in use in the Excel sheet: -Incident description -Date -Author -State Which of the following would you recommend as the best combination of fields to add? 1 credit [K2] Number of correct answers: 1

- A. Priority, version of software under test, incident identification
- B. Date to be fixed, priority, incident identification
- C. Developer assigned to the fix, version of software under test, incident identification
- D. Priority, version of software under test, date to be fixed

Correct Answer: A

[CTAL-TTA_001 VCE Dumps](#)[CTAL-TTA_001 Study Guide](#)[CTAL-TTA_001 Exam Questions](#)