

A00-270^{Q&As}

SAS BI Content Development

Pass SASInstitute A00-270 Exam with 100% Guarantee

Free Download Real Questions & Answers **PDF** and **VCE** file from:

<https://www.leads4pass.com/a00-270.html>

100% Passing Guarantee
100% Money Back Assurance

Following Questions and Answers are all new published by SASInstitute Official Exam Center

- ⚙️ **Instant Download** After Purchase
- ⚙️ **100% Money Back** Guarantee
- ⚙️ **365 Days** Free Update
- ⚙️ **800,000+** Satisfied Customers



QUESTION 1

Which combination of data sources is valid in an information map?

- A. One table and one cube
- B. One cube and one stored process
- C. One cube combined with a second cube
- D. One table and one stored process

Correct Answer: A

QUESTION 2

The authenticated id of a user is stored in the form USERID@DOMAIN. In SAS Information Map Studio, which identity-driven filter should be used to capture the correct userid?

- A. SAS.UseridDomain
- B. SAS.PersonName
- C. SAS.Domain
- D. SAS.Userid

Correct Answer: D

QUESTION 3

Which SAS Management Console plug-in is used to define metadata for channels?

- A. Configuration Manager plug-in
- B. Schedule Manager plug-in
- C. Foundation Services Manager plug-in
- D. Publishing Framework plug-in

Correct Answer: D

QUESTION 4

A content developer links from a SAS report in SAS Web Report Studio and passes values to another report. What must the receiving report have in order to use the passed value?

- A. a prompted filter based on the received value

- B. a List or Crosstab Report Object
- C. a section for each possible value to be received
- D. a data item of the same name as the value being passed

Correct Answer: A

QUESTION 5

A content developer wants to emphasize the indicator value shown by a dynamic gauge in SAS BI Dashboard. The content developer wants to display the color of the selected range while the other ranges remain neutral. How can this be achieved?

- A. Change the other colors in the range to be a neutral color.
- B. Select the gauge type to be a Dynamic Speedometer.
- C. Check the Ghost checkbox on the select a gauge screen.
- D. Alter the style to support shadowing.

Correct Answer: C

QUESTION 6

A SAS task is performed in Microsoft Excel against 2 million rows of data in a table that is registered to the metadata sever. What is the maximum number of rows that can be processed?

- A. 500
- B. 65536
- C. 2 million
- D. Excel's limitation based on the version of Excel

Correct Answer: C

QUESTION 7

Which statement is FALSE regarding SAS metadata permissions?

- A. To see an object in a folder, you need the ReadMetadata permission for the object
- B. To delete an object in a folder, you need the ReadMetadata and WriteMetadata permissions for me object.
- C. To edit an object in a folder, you need the ReadMetadata and WriteMetadata permission for the object.
- D. To save an Object to a folder, you need the ReadMetadata and WriteMetadata permission for me folder.

Correct Answer: D

QUESTION 8

When a Stored process is created from a SAS Enterprise Guide process flow, where are prompt dependences defined?

- A. In the SAS program code
- B. In the Create a New Stored Process wizard
- C. In a Query Builder task
- D. In the Prompt Manager

Correct Answer: D

QUESTION 9

Which statement is true about SAS BIDashboard?

- A. All indicator display types can link to other content
- B. All indicator display types support the use of ranges
- C. All indicator display types automatically aggregate data
- D. All indicator display types provide Display Settings properties

Correct Answer: B

QUESTION 10

When a SAS Web Report Studio report is built, the default behavior is to produce an aggregated report with measures summed. Average is a more appropriate aggregation for an age data item. In the information map, how can the aggregation be changed to average the measures?

- A. Change the default aggregation function to MEAN on the Properties of the data item.
- B. After the default aggregation is set, it cannot be changed in the information map.
- C. Change the measure's classification to MEAN.
- D. Change the format of the data item to AVERAGEw.d.

Correct Answer: A

QUESTION 11

Which SAS applications can be used to create data sources for reporting and analysis using the SAS platform

applications? (Choose two.)

- A. SAS Enterprise Guide
- B. SAS Information Delivery Portal
- C. SAS Information Map Studio
- D. SAS Web Report Studio

Correct Answer: AC

QUESTION 12

A user wants to see the most current information each time the report is opened in SAS Web Report Studio. How can this be accomplished?

- A. Save the report as data is automatically refreshed.
- B. Schedule the report and view the results after it is executed.
- C. Select the Refresh Data button when viewing the report.
- D. Save the report as data can be manually refreshed.

Correct Answer: A

QUESTION 13

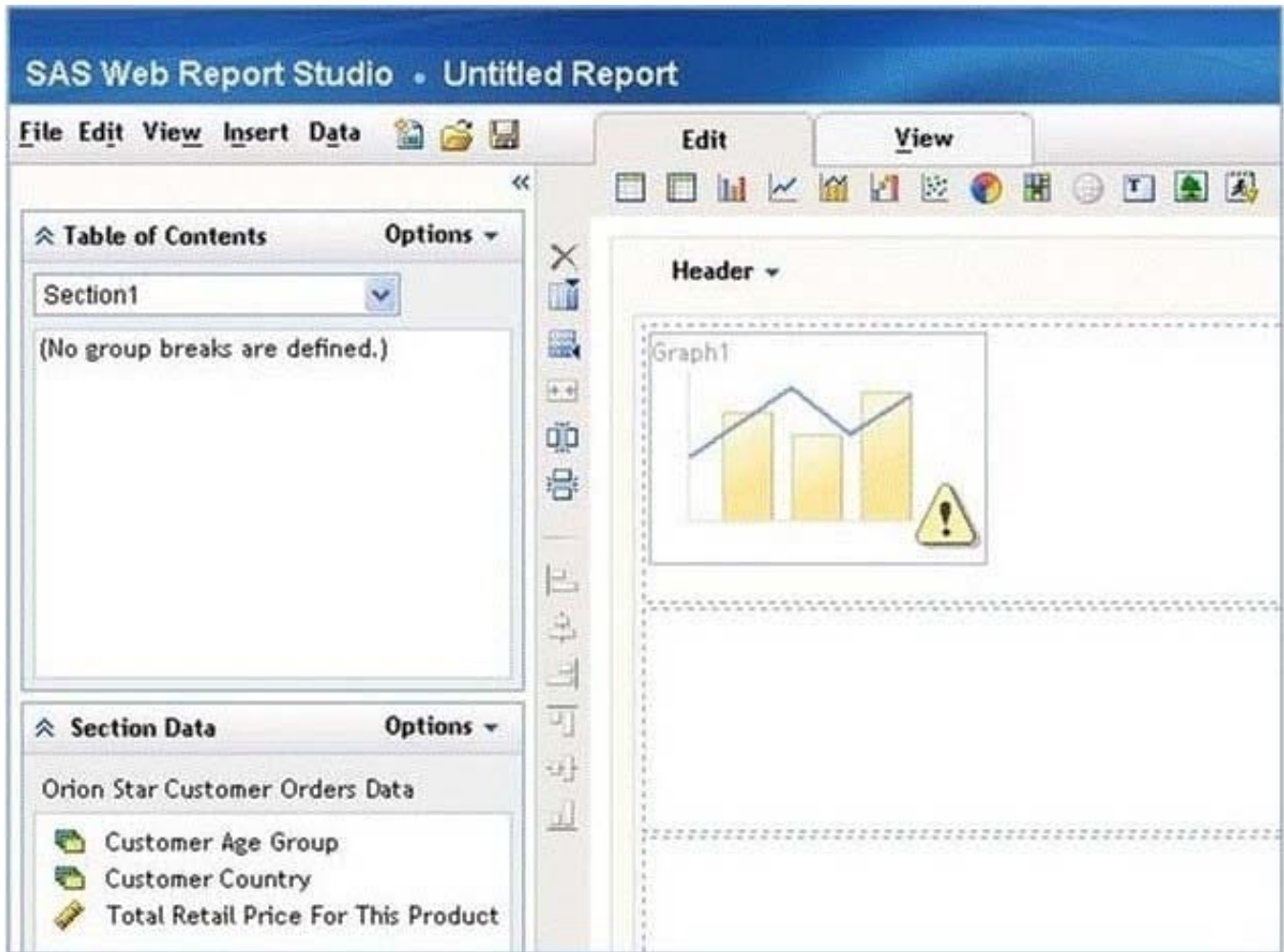
The WebDAV Content Portlet may display which one of the following?

- A. OLAP cubes
- B. Information maps
- C. Tables
- D. HTML files

Correct Answer: D

QUESTION 14

Refer to the exhibit.



Why is there a warning icon in this bar-line chart in SAS Web Report Studio?

- A. There are empty cells with no report objects.
- B. The properties of the bar line chart have not been set.
- C. The report has not been saved.
- D. There are not enough measure data items.

Correct Answer: D

QUESTION 15

A SAS Information Map is based on multiple relational tables. Which statement is true regarding the relationship?

- A. The default join is an inner join
- B. A relationship can be created only if column names in the data sources match
- C. A relationship can be created even if the joining columns are different types
- D. The default join created is a full outer join

Correct Answer: B

[A00-270 VCE Dumps](#)

[A00-270 Practice Test](#)

[A00-270 Study Guide](#)