

## 9L0-412<sup>Q&As</sup>

OS X Support Essentials 10.8 Exam

### Pass Apple 9L0-412 Exam with 100% Guarantee

Free Download Real Questions & Answers **PDF** and **VCE** file from:

<https://www.leads4pass.com/9l0-412.html>

100% Passing Guarantee  
100% Money Back Assurance

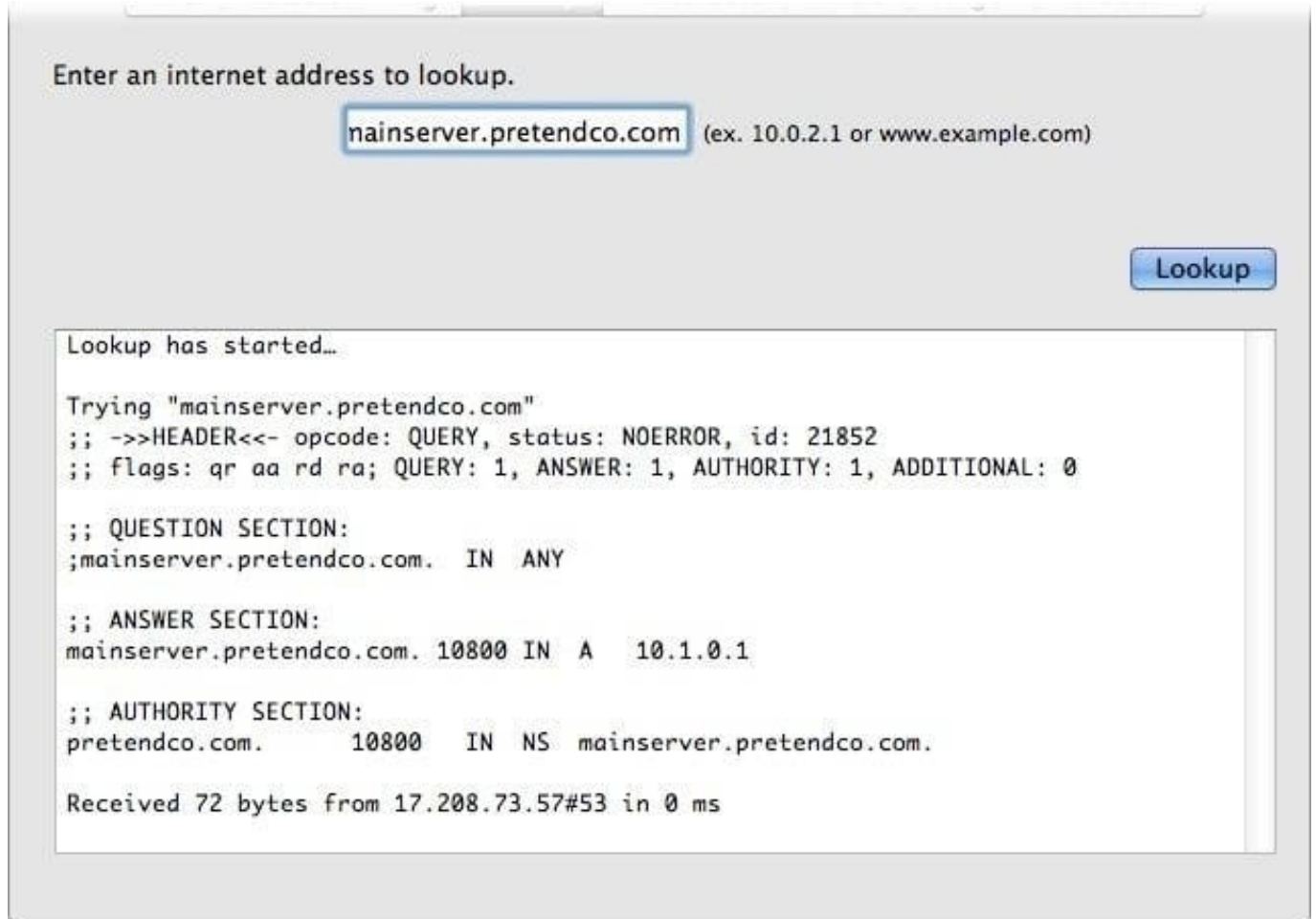
Following Questions and Answers are all new published by Apple  
Official Exam Center

-  **Instant Download** After Purchase
-  **100% Money Back** Guarantee
-  **365 Days** Free Update
-  **800,000+** Satisfied Customers



**QUESTION 1**

Review the screenshot of part of a Network Utility window, and then answer the question below.



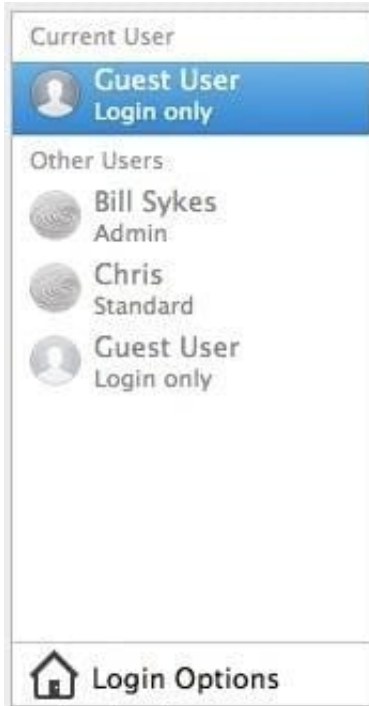
Which statement accurately interprets the Network Utility Lookup results shown above?

- A. A forward lookup of mainserver.pretendco.com returned the IP address 10.1.0.1.
- B. A reverse lookup of mainserver.pretendco.com returned the IP address 10.1.0.1.
- C. A reverse lookup of 10.1.0.1 returned the name mainserver.pretendco.com.
- D. The DNS server for mainserver.pretendco.com is pretendco.com.

Correct Answer: A

**QUESTION 2**

Review the screenshot of the My Account pane of Users and Groups preferences, and then answer the question below.



An OS X Mountain Lion computer has three local users configured as shown above. Bill Sykes has lost the password to his account. Which procedure will let you reset his password?

- A. Log in as Bill Sykes using the root password, open Users and Groups preferences, and then reset his password.
- B. Restart the Mac from the OS X Recovery partition, open Terminal from the Utilities menu, type `resetpassword` and press Return to open the Reset Password utility, and then reset his password.
- C. Log in as Chris, open Directory preferences and enable the root user, then authenticate as the root user in Users and Groups preferences, and then reset Bill Sykes's password.
- D. Log in as Chris, open Reset Password from the Utilities folder, and then reset Bill Sykes's password.

Correct Answer: B

---

### QUESTION 3

On an optional configuration step in the Setup Assistant in OS X Mountain Lion, pressing Command-Q lets you skip the step.

- A. True
- B. False

Correct Answer: B

---

### QUESTION 4

Review the screenshot, and then answer the question below.



You connect an HFS+-formatted FireWire hard disk to a Mac, and configure it as shown in the screenshot. What will happen the next time a standard user attempts to mount the hard disk?

- A. The disk will mount, and the user will be able to read, modify, and delete any file on the disk.
- B. The user will be required to enter an administrator password to mount the disk; once the disk is mounted, the user will be able to read any file on the disk, but will be required to re- enter an administrator password to modify or delete files.
- C. The disk will mount, and the user will be able to read any file on the disk; the user will be required to enter an administrator password to modify or delete files on the disk.
- D. The user will be required to enter an administrator password to mount the disk; once the disk is mounted, the user will be able to read, modify, and delete any file on the disk.

Correct Answer: A

---

#### QUESTION 5

What is the role of the launchd process in the startup of an OS X Mountain Lion computer?

- A. The kernel starts launchd, then launchd starts all the other processes involved in startup.
- B. The init process starts launchd, then launchd starts the items stored in the StartupItems folder.
- C. launchd starts the init process, then init starts all the other processes involved in startup.
- D. The init process starts launchd, then launchd starts the scripts stored in /etc/chron/.

Correct Answer: A

---

#### QUESTION 6

In OS X Mountain Lion, which TWO types of file service hosts can you browse in the Network folder? (Select 2)

- A. WebDAV
- B. SMB
- C. DFS
- D. FTP
- E. AFP

Correct Answer: BE

---

**QUESTION 7**

You have configured several network locations on your OS X Mountain Lion computer. How can you change from one location to another?

- A. In Network preferences, click Advanced, click Manage Locations, and then select a network location.
- B. Choose a network location from the Network Locations Input menu on the right side of the Finder menu bar.
- C. Choose Location from the Apple menu, and then choose a network location from the submenu.
- D. In Network preferences, choose Manage Locations from the Action pop-up menu below the Interfaces list, and select a network location.

Correct Answer: C

---

**QUESTION 8**

On your OS X Mountain Lion computer, you want the Finder to display filename extensions by default. How can you configure this setting from the Finder?

- A. Choose Preferences from the Finder menu, click Advanced, and select the option "Show all filename extensions."
- B. Control-click anywhere on the Desktop, select Preferences from the pop-up menu, click Advanced, and select the option "Show all filename extensions."
- C. Choose Show View Options from the View menu, and select the option "Show all filename extensions."
- D. Select any file icon, and choose Get Info from the File menu. In the Info window, click the disclosure triangle next to Name and Extension, deselect the option "Hide extension," and click Change All.

Correct Answer: A

---

**QUESTION 9**

Which dynamic service discovery protocol does OS X use to discover devices on a network?

- A. SLP
- B. AppleTalk
- C. Bonjour
- D. DynDNS

Correct Answer: C

---

## QUESTION 10

Which process will let you start up a Mac in target disk mode?

- A. Hold down the S key on the keyboard while the Mac starts up, then enter the command `reboot -target`.
- B. Open the Startup Disk preferences, click Target Disk Mode, and then click Restart.
- C. Start up from the OS X Recovery partition, choose Target Disk Mode from the Startup Disk menu, and restart the Mac.
- D. Hold down the Option key on the keyboard as the Mac starts up, until a dialog appears, then select Target Disk Mode from the dialog.

Correct Answer: B

---

## QUESTION 11

The function of journaling in the Mac OS Extended (Journaled) file system is to \_\_\_\_\_.

- A. protect volume structure integrity in cases of unexpected shutdown
- B. provide a backup of user files
- C. provide support for resource forks, extended attributes, and metadata
- D. provide support for Spotlight searches

Correct Answer: A

---

## QUESTION 12

In OS X Mountain Lion, which TWO types of file service hosts can you browse in the Network folder? (Select 2)

- A. WebDAV
- B. FTP
- C. DFS
- D. SMB
- E. AFP

Correct Answer: DE

---

## QUESTION 13

On your OS X Mountain Lion computer, you want the Finder to display filename extensions by default. How can you configure this setting from the Finder?

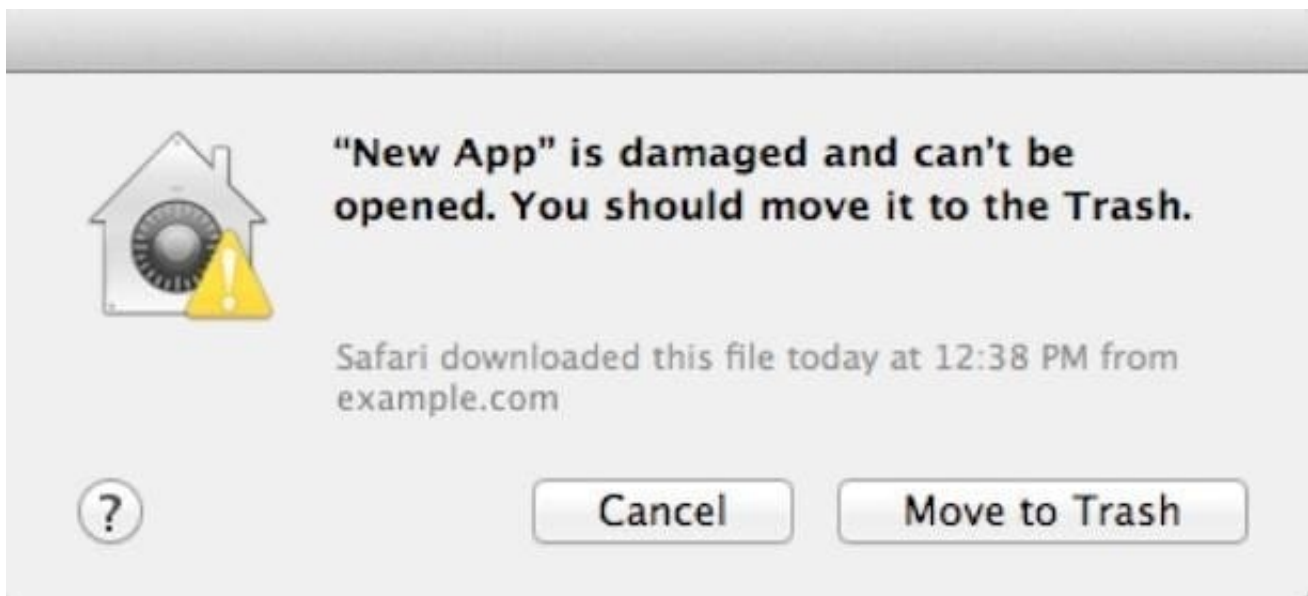
- A. Choose Preferences from the Finder menu, click Advanced, and select the option "Show all filename extensions."
- B. Control-click anywhere on the Desktop, select Preferences from the pop-up menu, click Advanced, and select the option "Show all filename extensions."
- C. Choose Show View Options from the View menu, and select the option "Show all filename extensions."
- D. Select any file icon, and choose Get Info from the File menu. In the Info window, click the disclosure triangle next to Name and Extension, deselect the option "Hide extension," and click Change All.

Correct Answer: A

---

#### QUESTION 14

Review the screenshot and answer the question below.



You downloaded an app using Safari. When you try to open the app, you see the message shown above. What is a possible explanation?

- A. The sandbox into which the app was downloaded by the quarantine system has become corrupted.
- B. The certificate needed to decrypt this app cannot be found in the keychain.
- C. Gatekeeper has recognized that the app was altered after it was signed.
- D. The app was signed using a certificate from an unknown authority.

Correct Answer: D

---

#### QUESTION 15

You are configuring an OS X Mountain Lion computer that will be located in a public space. You want anyone to be able to log in and use Safari, but you do NOT want their Safari browser history to remain on the computer after users log out.

Which action will let the computer function in the desired manner?

- A. Enable the Guest account for login.
- B. Create a managed account with Parental Controls.
- C. Create a Sharing Only account.
- D. Create a Guest account.

Correct Answer: ABD

[9L0-412 VCE Dumps](#)

[9L0-412 Practice Test](#)

[9L0-412 Braindumps](#)