

## 9A0-142<sup>Q&As</sup>

Adobe InDesign CS5 ACE Exam

**Pass Adobe 9A0-142 Exam with 100% Guarantee**

Free Download Real Questions & Answers **PDF** and **VCE** file from:

<https://www.leads4pass.com/9a0-142.html>

100% Passing Guarantee  
100% Money Back Assurance

Following Questions and Answers are all new published by Adobe  
Official Exam Center

-  **Instant Download** After Purchase
-  **100% Money Back** Guarantee
-  **365 Days** Free Update
-  **800,000+** Satisfied Customers



**QUESTION 1**

You have created a table in your InDesign document. You want to paste a graphic in a cell of the table. To accomplish this task you have selected the cell by pressing Esc key and then pasted the graphic.

What will happen?

- A. The cell will be eliminated from the table.
- B. The graphic will be pasted in the more than one cell in the table.
- C. The graphic will not be pasted in the cell.
- D. The graphic will be pasted in the cell.

Correct Answer: C

You should place a graphic in a table cell in exactly the same way as you insert a graphic in text. Click the Type tool in a cell, or select some text inside a cell, then place a file or paste a graphic that you copied to the Clipboard. You must select text or have an active text insertion point because selecting the cell itself will not get the graphic into the cell. In the above scenario you selected only the cell and not the text inside the cell; this is why graphic is not pasted in the table cell.

---

**QUESTION 2**

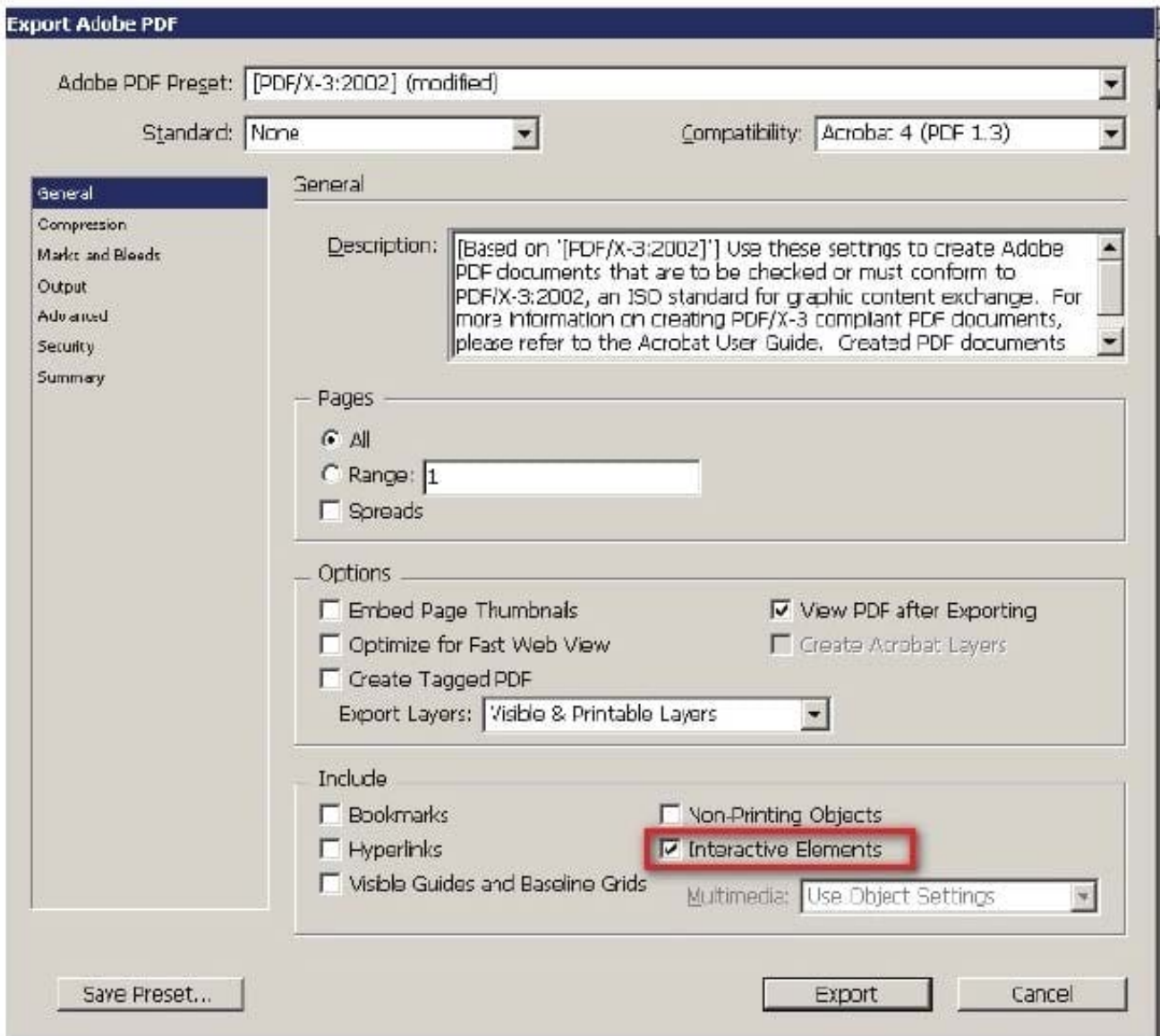
You are creating a newsletter in InDesign. You have applied page transitions on several pages of this document.

What will you do to include page transitions when you export the PDF document?

- A. Select the Bookmarks option in the Export PDF dialog box.
- B. Select the Non-Printing Objects option in the Export PDF dialog box.
- C. Select the Interactive Elements option in the Export PDF dialog box.
- D. Select the Embed Page Thumbnails option in the Export PDF dialog box.

Correct Answer: C

To include page transitions when you export the PDF document, you have to select the Interactive Elements option in the Export PDF dialog box. The following diagram shows the Interactive Elements option in the Export PDF dialog box.



Answer: D is incorrect. Select this option to create a thumbnail preview for each page being exported. Adding thumbnails increases the PDF file size.

Answer: A is incorrect. Select this option to create bookmarks for table of contents entries, preserving the TOC levels. Bookmarks are created from the information specified in the Bookmarks panel.

Answer: B is incorrect. Select this option to export objects to which you have applied the Non- Printing option in the Attributes panel.

**QUESTION 3**

You are working with three open and tabbed documents. You want to view all the three documents simultaneously on your monitor.

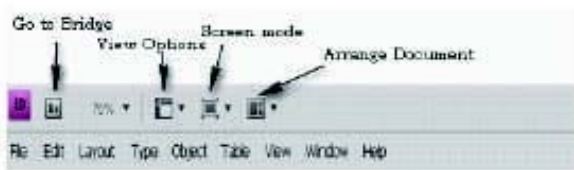
Where do you find the feature that will enable you to lay out document windows as a grid?

A. The Application bar

- B. The Control panel
- C. The Pathfinder panel
- D. The Status bar

Correct Answer: A

The Arrange Document dropdown menu in the Application bar is used to lay out document windows as a grid. The Application bar provides menus and options that make it easy to access the workspace. The Arrange Document dropdown menu is used to quickly arrange open documents in a variety of configurations. Along with this bar, the user can also access Adobe Bridge.



The above figure illustrates the Application bar

Answer option B is incorrect. The Control panel (**Window > Control**) provides quick access to options, commands, and other panels related to the current page item or objects that you select.

Answer option D is incorrect. The Status bar (at the lower left of the document window) shows information about the status of a file and lets you turn to a different page.

Answer option C is incorrect. The Pathfinder panel is used to combine selected objects into new shapes. This panel can be opened by choosing **Window > Object and Layout > Pathfinder**.



## QUESTION 4

You are creating a book in InDesign CS5. You want to replace an existing chapter with another document.

What will you do to accomplish this task?

- A. Choose Remove Document from the flyout menu or click the Remove Document iconic button (the - icon) from the bottom of the panel.
- B. Select the Automatic Document Conversion menu option in the book panel's flyout menu.

C. Choose File >New > Book.

D. Select the chapter in the book panel and then choose Replace Document from the flyout menu.

Correct Answer: D

To replace an existing chapter with another document, select the chapter in the book panel and then choose Replace Document from the flyout menu.

Answer: A is incorrect. If you choose Remove Document from the flyout menu or click the Remove Document iconic button (the - icon) from the bottom of the panel, it will delete chapters from the book.

Answer: B is incorrect. If the Automatic Document Conversion menu option is selected in the book panel's flyout menu, InDesign will convert all chapters created in the earlier versions of InDesign into the InDesign CS5 format.

Answer: C is incorrect. If you Choose File >New > Book, the New Book dialog box will open.

---

## QUESTION 5

How will you reposition a page in the center of the document window?

A. Choose View > Fit Spread In Window

B. Choose View > Entire Pasteboard

C. Choose View > Actual Size

D. Choose View > Fit Page In Window

Correct Answer: D

You should choose View > Fit Page In Window, to reposition the page in the center of the document windows, if it is not already centered.

Answer: A is incorrect. The Fit Spread In Window option displays the targeted spread in the Window.

Answer: C is incorrect. The Actual Size option displays the document at 100%.

Answer: B is incorrect. The Entire Pasteboard option displays the full pasteboard.

---

## QUESTION 6

Which of the following are the basic rules for creating graphics files? Each correct answer represents a complete solution. Choose all that apply.

A. Bitmaps such as photos and scans should be saved in the PCX, BMP, GIF, SCT, or PICT format.

B. Line art should be saved in the EPS, PDF, Adobe Illustrator, WMF, EMF, or PICT format.

C. Line art should be saved in the PCX, BMP, GIF, or SCT format.

D. Bitmaps such as photos and scans should be saved in the TIFF, Adobe Photoshop, PNG, or JPEG format.

Correct Answer: ABD

Following are the two basic rules for creating graphics files:

- 1.Line art should be saved in the EPS, PDF, Adobe Illustrator, WMF, EMF, or PICT format.
  - 2.Bitmaps such as photos and scans should be saved in the TIFF, Adobe Photoshop, PNG, JPEG, PCX, BMP, GIF, SCT, or PICT format.
- 

### QUESTION 7

Which of the following statements are correct about a gradient? Each correct answer represents a complete solution. Choose all that apply.

- A. Gradients cannot include mixed ink colors using any color mode.
- B. Gradients can include paper, process colors, and spot colors.
- C. A gradient changes from one color to the next at a point called start, and is identified by a color square under the gradient bar.
- D. A gradient changes from one color to the next at a point called stop, and is identified by a color square under the gradient bar.

Correct Answer: BD

A gradient is a graduated blend between two or more colors or between two tints of the same color. Gradients can include paper, process colors, spot colors, or mixed ink colors using any color mode. They are defined by a series of color stops in the gradient bar. A gradient changes from one color to the next at a point called stop, and is identified by a color square under the gradient bar. It starts with two colors and a midpoint at 50%, by default.

---

### QUESTION 8

Which of the following are color systems or models supported by InDesign? Each correct answer represents a complete solution. Choose all that apply.

- A. RGB
- B. Toyo
- C. WB
- D. Focoltone

Correct Answer: ABD

Following are the various types of color systems or models supported by InDesign:

- 1.CMYK
- 2.RGB
- 3.Pantone

4.Focoltone

5.Dainippon Ink and Chemical (DIC)

6.Toyo

7.Trumatch

8.Web

---

## QUESTION 9

Which of the following tools can be used to create lines and shapes? Each correct answer represents a complete solution. Choose all that apply.

A. Rectangle frame tool

B. Pen tool

C. Pencil tool

D. Polygon frame tool

Correct Answer: BC

Following are the various objects that can be created with InDesign's object-creation tools.

1.Straight lines created by using the Line tool

2.Lines and shapes created by using the Pen tool or the Pencil tool

3.Basic shapes created by using Ellipse, Rectangle, and Polygon

4.Basic frames created by using Ellipse Frame, Rectangle Frame, and Polygon Frame

---

## QUESTION 10

You have two InDesign files. You would like to add the content of one file to another.

Which of the following methods will you choose to accomplish this task? Each correct answer represents a complete solution. Choose all that apply.

A. Drag the content of the first file and drop it to the other file.

B. Choose File > Place and locate the first file and place it to the second file.

C. Copy the content of first document and paste it on the other file.

D. Import the content of the first file to the second document.

Correct Answer: ABC

These are all correct methods to exchange content between files. You can copy or drag the content between opened

---

files, or choose File > place to add content from a file in the local machine.

Answer: D is incorrect. You cannot import the content of the one file to the other file in InDesign.

---

**QUESTION 11**

Which of the following panes in the Print dialog box is used to control the processing of colors and inks on imagesetters, platesetters, and commercial printing equipments?

- A. Advanced pane
- B. Output pane
- C. Graphics pane
- D. Color Management pane

Correct Answer: B

The Output pane is used to control the processing of colors and inks on imagesetters, platesetters, and commercial printing equipments.

Answer: C is incorrect. The Graphics pane is used to control how graphics are printed and how fonts are downloaded.

Answer: A is incorrect. The Advanced pane is used to control printing of files as bitmaps, manage graphics file substitutions in an Open Prepress Interface (OPI) workflow, and set transparency flattening, which manages how transparent and

semi-transparent objects are handled during output.

Answer: D is incorrect. The Color Management pane is used to manage color output.

---

**QUESTION 12**

Which of the following options will you select to sort the entries alphabetically in the table of contents in the selected style while generating or editing the table of contents?

- A. Create PDF Bookmarks
- B. Between Entry And Number
- C. Include Text On Hidden Layers
- D. Sort Entries in Alphabetical Order

Correct Answer: D

You should select Sort Entries in Alphabetical Order option to sort the entries alphabetically in the table of contents in the selected style. This option is useful for creating simple lists, such as lists of advertisers.

Answer: A is incorrect. Create PDF Bookmarks option should be selected if you want the table of contents entries to appear in the Bookmarks panel of Adobe Acrobat or Adobe Reader when the document is exported to PDF.



Answer: C is incorrect. Include Text On Hidden Layers option should be selected if you want the paragraphs on hidden layers to be included in your table of contents.

Answer: B is incorrect. Between Entry And Number option should be selected to specify which characters you want between the table of contents entry and its page number.

---

**QUESTION 13**

You are creating a book in InDesign CS5. You want to make sure that you are using the same conditions in all documents of the book.

What will you do to accomplish this task?

- A. Choose Show or Hide from the Indicators menu.
- B. Choose Load Conditions.
- C. Edit condition indicators.
- D. Synchronize conditions in a book.

Correct Answer: D

To make sure that you are using the same conditions in all documents of a book, create the desired conditions in the style source document; then select Conditional Text Settings in the Synchronize Options dialog box. Next, synchronize the

book.

Answer: A is incorrect. Choose Show or Hide from the Indicators menu in the Conditional Text panel to show or hide the condition indicators.

Answer: B is incorrect. Choose Load Conditions to load only the conditions in a document.

Answer: C is incorrect. This option modifies indicator settings in the conditional text panel.

---

**QUESTION 14**

Which of the following file formats are supported by InDesign? Each correct answer represents a complete solution. Choose all that apply.

- A. Audio files
- B. Computer Graphics Metafile
- C. Video files
- D. Animation files

Correct Answer: ACD

Following are the file formats supported by InDesign:

- 1.Video files such as Flash video, QuickTime movie, and Microsoft AVI video
- 2.Animation files such as Flash player presentation
- 3.Audio files such as MP3 music, Apple AIFF, and Microsoft WAV sound

Answer: B is incorrect.

The following formats are not supported by InDesign:

- 1.AutoCAD Document Exchange Format (DXF)
  - 2.Computer Graphics Metafile (CGM)
  - 3.CorelDraw
  - 4.Eastman Kodak\'s Photo CD
  - 5.Scalable Vector Graphics (SVG)
- 

## QUESTION 15

Which of the following methods will you use to insert a cross-reference in a document? Each correct answer represents a complete solution. Choose all that apply.

- A. Choose Window > Type and Tables > Cross-References, and then choose Insert Cross-Reference from the Hyperlinks panel menu
- B. Choose Object > Interactive > Hyperlinks > Insert Cross-Reference
- C. Choose Type > Hyperlinks and Cross-References > Insert Cross-Reference
- D. Choose Window > Interactive > Hyperlinks > Insert Cross-Reference

Correct Answer: ACD

If you want to create a cross-reference, place the insertion point where you want the cross- reference to be inserted and then choose one of the following methods to access New Cross- Reference dialog box. Choose Type > Hyperlinks and Cross-References > Insert Cross-Reference. Choose Window > Type and Tables > Cross-References, and then choose Insert Cross- Reference from the Hyperlinks panel menu. Choose Window > Interactive > Hyperlinks > Insert Cross-Reference.

Answer: B is incorrect. This answer option is invalid.