

## 98-364<sup>Q&As</sup>

Database Fundamentals

### Pass Microsoft 98-364 Exam with 100% Guarantee

Free Download Real Questions & Answers **PDF** and **VCE** file from:

<https://www.leads4pass.com/98-364.html>

100% Passing Guarantee  
100% Money Back Assurance

Following Questions and Answers are all new published by Microsoft  
Official Exam Center

- ⚙ **Instant Download** After Purchase
- ⚙ **100% Money Back** Guarantee
- ⚙ **365 Days** Free Update
- ⚙ **800,000+** Satisfied Customers



**QUESTION 1**

Which keyword must be included in a create view statement?

- A. WHERE
- B. ORDER BY
- C. UPDATE
- D. SELECT

Correct Answer: D

---

**QUESTION 2**

You have the following table definition:

```
CREATE TABLE Product
```

```
(ID INTEGER PRIMARY KEY,
```

```
Name VARCHAR(20),
```

```
Quantity INTEGER)
```

The Product table contains the following data.

ID	Name	Quantity
1234	Apples	33
2615	Oranges	0
3781	Pears	29
4589	Plums	

You execute the following statement:

```
SELECT Name FROM Product WHERE Quantity IS NOT NULL
```

How many rows are returned?

- A. 0
- B. 1
- C. 2
- D. 3
- E. 4

Correct Answer: D

---

### QUESTION 3

This question requires that you evaluate the underlined text to determine if it is correct.

The JOIN keyword combines the results of two queries and returns only rows that appear in both result sets.

Instructions: Review the underlined text. If it makes the statement correct, select "No change is needed." If the statement is incorrect, select the answer choice that makes the statement correct

- A. No change is needed
- B. INTERSECT
- C. ALL
- D. UNION

Correct Answer: B

INTERSECT returns rows that are common to both queries

---

### QUESTION 4

You have two database tables as defined below. The first table contains information about students. The second table contains information about courses. The two tables are related by CourseID.

StudentID	StudentName	CourseID
1	Brad	4
2	Joe	1
3	Susan	2

CourseID	CourseName
1	Math
2	Science
3	Geography
4	Reading
5	History

Match the CourseName to the StudentName.

Instructions: To answer, drag the appropriate CourseName from the column on the left to its StudentName on the right. Each CourseName may be used once, more than once, or not at all. Each correct match is worth one point.

Select and Place:

Course Name	Answer Area
Geography	<u>StudentName</u> <u>CourseName</u>
History	Brad      Course Name
Math	Joe      Course Name
Reading	Susan      Course Name
Science	

Correct Answer:

Course Name	Answer Area
Geography	<u>StudentName</u> <u>CourseName</u>
History	Brad      Reading
	Joe      Math
	Susan      Science

## QUESTION 5

You need to rename a column in a database table.

Which data definition language (DDL) statement should you use?

- A. ALTER
- B. INSERT
- C. CREATE
- D. UPDATE

Correct Answer: A

---

#### QUESTION 6

You have a table of products with fields for ProductID, Name, and Price.

You need to write an UPDATE statement that sets the value in the InStock field to Yes for a specific ProductID.

Which clause should you use in your update statement?

- A. THAT
- B. WHERE
- C. GROUP BY
- D. HAVING

Correct Answer: B

---

#### QUESTION 7

You need to store product names that vary from three to 30 characters. You also need to minimize the amount of storage space that is used.

Which data type should you use?

- A. VARCHAR (3, 30)
- B. CHAR (3, 30)
- C. VARCHAR (30)
- D. CHAR (30)

Correct Answer: C

---

#### QUESTION 8

You have a table that contains the following data.

ProductID	ProductCategory
32	books
25	books
67	movies
89	movies

Which database term is used to describe the relationship between ProductID and ProductCategory?

- A. Cohort
- B. Relationally dependent
- C. Deterministic
- D. Functionally dependent
- E. Compositional

Correct Answer: D

---

## QUESTION 9

Which database term is used to describe the process of applying a backup to a damaged or corrupt database?

- A. Recover
- B. Restore
- C. Commit
- D. Attach

Correct Answer: B

---

## QUESTION 10

You need to store the first name, last name, and student ID for 100 students.

This information will be stored in a table as:

- A. 100 items and three cells.
- B. 100 rows and three columns.
- C. three rows and 100 columns.
- D. three items and 100 cells.

Correct Answer: B

---

## QUESTION 11

You have a database table that contains the following columns:

dbo.AddressInfo
Columns
StreetAddress (varchar(255), null)
City (varchar(255), null)
State (varchar(2), null)
PostalCode (varchar(15), null)

You must insert the following record into the table:

StreetAddress	City	State	PostalCode
1234 Main Street	Dallas	TX	75201

Which two Structured Query Language (SQL) statements can you use? (Choose two.)

- ☐ A. `INSERT INTO AddressInfo ('1234 Main Street', 'Dallas', 'TX', '75201') VALUES ([StreetAddress], [City], [State], [PostalCode])`
- ☐ B. `INSERT INTO AddressInfo ([StreetAddress], [City], [State], [PostalCode]) VALUES ('1234 Main Street', 'Dallas', 'TX', '75201')`
- ☐ C. `INSERT INTO AddressInfo VALUES ('1234 Main Street', 'Dallas', 'TX', '75201')`
- ☐ D. `UPDATE AddressInfo SET [StreetAddress]='1234 Main Street', [City]='Dallas', [State]='TX', [PostalCode]='75201'`

A. Option A

B. Option B

C. Option C

D. Option D

Correct Answer: BC

## QUESTION 12

You have the following table definition:

CREATE TABLE Road (RoadID INTEGER NOT NULL, Distance INTEGER NOT NULL)

The Road table contains the following data: You execute the following statement: INSERT INTO Road VALUES (1234, 36)

RoadID	Distance
1234	22
1384	34

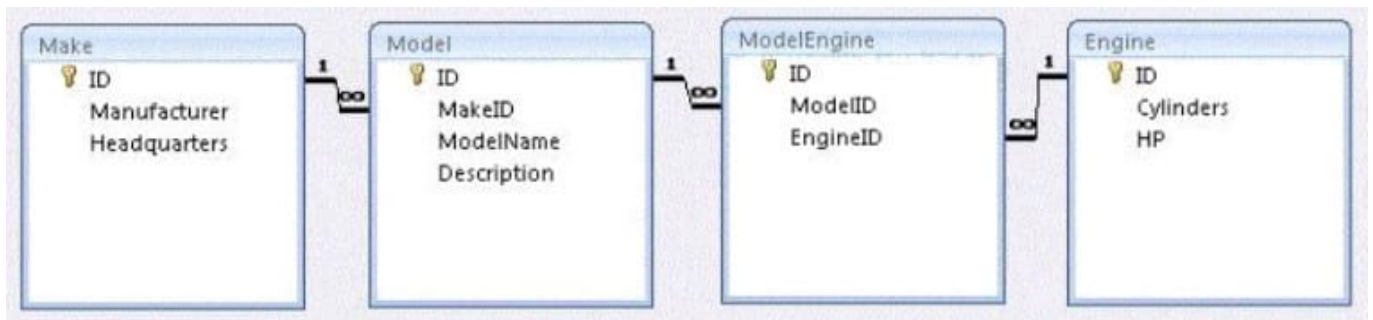
What is the result?

- A. an error stating that NULL values are not allowed
- B. a new row in the table
- C. an error stating that duplicate IDs are not allowed
- D. a syntax error

Correct Answer: B

## QUESTION 13

You work for a small auto trading company. You need to remove a car from the company database. Information about the car is stored in the following tables.



All of the car's parts are custom made, so they each have a row in every table. Cascading deletes are not enabled but referential integrity is. From which table must you first make your deletion?

- A. Make
- B. Model
- C. Engine
- D. ModelEngine

Correct Answer: A

## QUESTION 14

You have a table named Product. The Product table has columns for ProductDescription and ProductCategory.

You need to change the ProductCategory value for all the spoons in the Product table to 43.

Which statement should you use?



- A. `UPDATE Product  
SET ProductCategory = 43  
WHERE ProductDescription = 'spoon'`
- B. `SET Product  
WHERE ProductDescription = 'spoon'  
TO ProductCategory = 43`
- C. `UPDATE Product  
WHERE ProductDescription = 'spoon'  
SET ProductCategory = 43`
- D. `SET Product  
TO ProductCategory = 43  
WHERE ProductDescription = 'spoon'`

A. Option A

B. Option B

C. Option C

D. Option D

Correct Answer: A

---

### QUESTION 15

Your class project requires that you help a charity set up a website.

The website collects information about volunteers. Each volunteer record must be uniquely identified.

The following information is stored for each volunteer:

Given name

Surname

Date of birth

Phone number

Photo

You need to create a table to meet the requirements.

Match the Structured Query Language SQL statements to the SQL query.

Instructions: To answer, drag the appropriate SQL statement from the column on the left to its place in the SQL query on the right. Each SQL statement may be used once, more than once, or not at all. Each correct match is worth one point.

Select and Place:

Code Segment	Answer Area
<input type="text" value="TIMESTAMP NULL,"/>	<pre>CREATE TABLE [dbo].[Volunteer] (</pre>
<input type="text" value="DATE NULL,"/>	<pre>[Id] <input type="text" value="Code Segment"/></pre>
<input type="text" value="IMAGE NULL,"/>	<pre>[GivenName] NCHAR(255) NULL, [Surname] NCHAR(255) NULL,</pre>
<input type="text" value="XML NULL,"/>	<pre>[DateOfBirth] <input type="text" value="Code Segment"/></pre>
<input type="text" value="INT NOT NULL PRIMARY KEY,"/>	<pre>[PhoneNumber] NCHAR(10) NULL,</pre>
<input type="text" value="INT NOT NULL FOREIGN KEY,"/>	<pre>[Photo] <input type="text" value="Code Segment"/></pre>
	<pre>)</pre>

Correct Answer:

Code Segment	Answer Area
<input type="text" value="TIMESTAMP NULL,"/>	<pre>CREATE TABLE [dbo].[Volunteer] (</pre>
<input type="text" value="DATE NULL,"/>	<pre>[Id] <input type="text" value="INT NOT NULL PRIMARY KEY,"/></pre>
<input type="text" value="IMAGE NULL,"/>	<pre>[GivenName] NCHAR(255) NULL, [Surname] NCHAR(255) NULL,</pre>
<input type="text" value="XML NULL,"/>	<pre>[DateOfBirth] <input type="text" value="DATE NULL,"/></pre>
<input type="text" value="INT NOT NULL FOREIGN KEY,"/>	<pre>[PhoneNumber] NCHAR(10) NULL,</pre>
	<pre>[Photo] <input type="text" value="IMAGE NULL,"/></pre>
	<pre>)</pre>

[Latest 98-364 Dumps](#)
[98-364 Practice Test](#)
[98-364 Exam Questions](#)