

70-243^{Q&As}

Administering and Deploying System Center 2012 Configuration Manager

Pass home 70-243 Exam with 100% Guarantee

Free Download Real Questions & Answers **PDF** and **VCE** file from:

<https://www.leads4pass.com/70-243.html>

100% Passing Guarantee
100% Money Back Assurance

Following Questions and Answers are all new published by home
Official Exam Center

- ⚙️ **Instant Download** After Purchase
- ⚙️ **100% Money Back** Guarantee
- ⚙️ **365 Days** Free Update
- ⚙️ **800,000+** Satisfied Customers



QUESTION 1

HOTSPOT

You manage a System Center 2012 R2 Configuration Manager Service Pack 1 (SP1) stand-alone primary site. The deployment contains the servers configured as shown in the following table.

Server name	Configuration
Server1	Site server
Server2	Distribution point
Server3	SMS Provider
Server4	Reporting services point
Server5	Management point
Server6	Site database server

You are troubleshooting the hardware inventory flow from a Windows 8.1 computer named Client1. You need to verify whether the following events have occurred:

- The inventory files were uploaded from Client1.
- The inventory data was added to the site database.

Which log should you verify for each event? To answer, select the appropriate options in the answer area.

Hot Area:

Answer Area

The inventory files were uploaded from Client1:

▼

- Datatransferservice.log on Client1
- Invproc.log on Server1
- Mp_hinv.log Server5
- The application event log on Server3

The inventory data was added to the site database:

▼

- Datadr.log Server1
- Datatransferservice.log on Client1
- Invproc.log on Server1
- Mp_hinv.log Server5

Correct Answer:

Answer Area

The inventory files were uploaded from Client1:

	▼
Datatransferservice.log on Client1	
Invproc.log on Server1	
Mp_hinv.log Server5	
The application event log on Server3	

The inventory data was added to the site database:

	▼
Datadr.log.Server1	
Datatransferservice.log on Client1	
Invproc.log on Server1	
Mp_hinv.log Server5	

*

Box 1:

MP_Hinv.log records details about the conversion of XML hardwareinventory records from clients and the copy of those files to the site server.

*

Box 2:

datadr.log records information about the processing of Management Information Format (MIF) files and hardware inventory in the Configuration Manager database.

Is placed on the site server.

QUESTION 2

DRAG DROP

Your network contains a single Active Directory domain named contoso.com. System Center 2012 R2 Configuration Manager Service Pack 1 (SP1) is deployed to contoso.com.

You have a Windows 8.1 operating system image named Image1 in Configuration Manager. Image1 has the data source of \\server1.contoso.com\source\Image1.wim. New client computers are deployed by using Image1.

You have an application named App1.exe. App1 is a configuration utility that does not require installation.

You need to ensure that App1.exe is included in all future deployments of Image1.

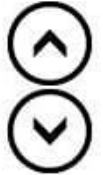
Which four actions should you perform in sequence? To answer, move the appropriate actions from the list of actions to the answer area and arrange them in the correct order.

Select and Place:

Actions

Answer Area

- Copy App1.exe
- Refresh Image1.
- Capture an image.
- Mount Image1.wim.
- Unmount Image1.wim.
- Schedule updates for Image1.
- Distribute the image to distribution points.



Correct Answer:

Actions

Answer Area

- Refresh Image1.
- Capture an image.
- Schedule updates for Image1.

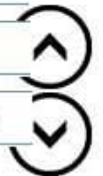
Mount Image1.wim.

Copy App1.exe



Unmount Image1.wim.

Distribute the image to distribution points.



QUESTION 3

HOTSPOT

Your network contains a single Active Directory domain named contoso.com. The domain contains a member server named Server1.

System Center 2012 R2 Configuration Manager Service Pack 1 (SP1) is deployed to Server1. All of the site system roles are installed on Server1.

Server1 will be used for application deployment. The application source files are stored in the subfolders of a folder named E:\Software. E:\Software is shared as Software.

E:\Software\App1 contains the following files:

- App1.sft
- App1.apk
- App1.exe
- App1.msi
- App1.osd
- App1.sprj
- App1.xml
- Setup.exe
- App1.appv
- App1.appx

You plan to create an application named App1 by using the Create Application Wizard.

App1 will have the following deployment types:

You need to identify which path to use for each deployment type of App1.

What should you identify? To answer, select the appropriate options in the answer area.

Hot Area:

Answer Area

App-V 5:

		▼
C:\Software\App1\App1.exe		
C:\Software\App1\App1.xml		
C:\Software\App1\App1.appv		
\\Server1.contoso.com\Software\App1.exe		
\\Server1.contoso.com\Software\App1.xml		
\\Server1.contoso.com\Software\App1.appv		

Windows App Package:

		▼
C:\Software\App1\App1.apk		
C:\Software\App1\App1.xml		
C:\Software\App1\App1.appx		
\\Server1.contoso.com\Software\App1.apk		
\\Server1.contoso.com\Software\App1.xml		
\\Server1.contoso.com\Software\App1.appx		

Correct Answer:

Answer Area

App-V 5:

▼	
C:\Software\App1\App1.exe	
C:\Software\App1\App1.xml	
C:\Software\App1\App1.appv	
\\Server1.contoso.com\Software\App1.exe	
\\Server1.contoso.com\Software\App1.xml	
\\Server1.contoso.com\Software\App1.appv	

Windows App Package:

▼	
C:\Software\App1\App1.apk	
C:\Software\App1\App1.xml	
C:\Software\App1\App1.appx	
\\Server1.contoso.com\Software\App1.apk	
\\Server1.contoso.com\Software\App1.xml	
\\Server1.contoso.com\Software\App1.appx	

QUESTION 4

HOTSPOT

You manage a System Center 2012 R2 Configuration Manager Service Pack 1 (SP1) stand-alone primary site.

You have two line-of-business applications named App1 and App2. App1 is deployed by using a Configuration Manager application and is deployed to a computer collection that has the purpose set to Available. App2 is deployed by using a

Configuration Manager package and is deployed to a user collection that has the purpose set to Required.

You need to ensure that users will be able to install App1 and App2 by using the Application Catalog. The solution must minimize administrative effort.

In the table below, identify the action to perform for App1 and App2.

NOTE: Make only one selection on each column.

Hot Area:

Answer Area

Action	App1	App2
Redeploy the application and use a different purpose.	<input type="radio"/>	<input type="radio"/>
Redeploy the application and use a different target collection.	<input type="radio"/>	<input type="radio"/>
Recreate the application as a Configuration Manager package.	<input type="radio"/>	<input type="radio"/>
Recreate the application as a Configuration Manager application.	<input type="radio"/>	<input type="radio"/>

Correct Answer:

Answer Area

Action	App1	App2
Redeploy the application and use a different purpose.	<input type="radio"/>	<input checked="" type="radio"/>
Redeploy the application and use a different target collection.	<input checked="" type="radio"/>	<input type="radio"/>
Recreate the application as a Configuration Manager package.	<input type="radio"/>	<input type="radio"/>
Recreate the application as a Configuration Manager application.	<input type="radio"/>	<input type="radio"/>

QUESTION 5

DRAG DROP

You have a System Center 2012 R2 Configuration Manager Service Pack 1 (SP1) standalone primary site.

You use Configuration Manager to deploy software updates to client computers.

You plan to monitor the software update deployment process from a client computer.

You need to collect data as quickly as possible to monitor the software update deployment process.

Which actions should you initiate from the client computer? To answer, drag the appropriate actions to the correct locations. Each action may be used once, more than once, or not at all. You may need to drag the split bar between panes or

scroll to view content.

Select and Place:

The screenshot shows a drag-and-drop interface. On the left, under the heading "Actions", there is a list of five items in rectangular boxes: "Discovery Data Collection Cycle", "Machine Policy Retrieval and Evaluation Cycle", "Software Inventory Cycle", "Software Updates Deployment Evaluation Cycle", and "Software Updates Scan Cycle". On the right, under the heading "Answer Area", there are three rows, each with a label and a dashed rectangular box: "First action: Action", "Second action: Software Updates Scan Cycle", and "Third action: Action". A vertical line separates the two panes, and a vertical scroll bar is visible on the right side of the "Actions" pane.

Correct Answer:

The screenshot shows the same drag-and-drop interface as above, but with the correct answers placed in the answer area. The "Actions" list remains the same. In the "Answer Area", the dashed boxes are now solid and contain the following text: "First action: Machine Policy Retrieval and Evaluation Cycle", "Second action: Software Updates Scan Cycle", and "Third action: Software Updates Deployment Evaluation Cycle".

QUESTION 6

HOTSPOT

You have a System Center 2012 R2 Configuration Manager Service Pack 1 (SP1) deployment.

You enable the Backup Site Server maintenance task and you configure the task to back up to a local drive.

You need to copy the backup to a network share automatically as soon as the backup completes.

What should you do? To answer, select the appropriate options in the answer area.

Hot Area:

Answer Area

Name of the script that copies the backup:

AferBackup.bat
AferBackup.cmd
AferBackup.ps1
AferBackup.vbs

Location in which to store the script:

%systemroot%\WinSxS\Backup
%systemroot%\WinSxS\Backup
%ProgramFiles%\Microsoft Configuration Manager\inboxes\smsbkup.box
%ProgramFiles%\Microsoft Configuration Manager\inboxes\schedule.box

Correct Answer:

Answer Area

Name of the script that copies the backup:

AferBackup.bat
AferBackup.cmd
AferBackup.ps1
AferBackup.vbs

Location in which to store the script:

%systemroot%\WinSxS\Backup
%systemroot%\WinSxS\Backup
%ProgramFiles%\Microsoft Configuration Manager\inboxes\smsbkup.box
%ProgramFiles%\Microsoft Configuration Manager\inboxes\schedule.box

The AfterBackup.bat file is used to perform post-backup actions automatically after the Backup Site Server maintenance task runs successfully. To create the AfterBackup.bat batch file

QUESTION 7

HOTSPOT

You manage a System Center 2012 R2 Configuration Manager Service Pack 1 (SP1) site.

You plan to create two collections named Collection1 and Collection2 that have dynamic membership rules. Collection1 will contain all of the servers in the domain. Collection2 will contain only the domain controllers.

You have a Configuration Manager query that you will use as the basis for creating the collection. The query has the following WQL statement.

Select

```
SMS_R_SYSTEM.ResourceID, SMS_R_SYSTEM.ResourceType,
SMS_R_SYSTEM.Name, SMS_R_SYSTEM.SMSUniqueIdentifier,
SMS_R_SYSTEM.ResourceDomainORWorkgroup,
SMS_R_SYSTEM.Client from SMS_R_System inner join
SMS_G_System_SYSTEM on SMS_G_System_SYSTEM.ResourceId =
SMS_R_System.ResourceId where SMS_G_System_SYSTEM.SystemRole = "Server"
```

You need to complete the statement that will be used for each collection.

Which class and attribute should you add in the where clause for each collection? To answer, select the appropriate options in the answer area.

Hot Area:

Answer Area

Collection1:

SMS_G_System_SYSTEM.Domain
SMS_G_System_SYSTEM.SystemRole
SMS_G_System_SYSTEM_ACCOUNT.Domain
SMS_R_SYSTEM.SMSUniqueIdentifier

Collection2:

SMS_G_System_SYSTEM.Domain
SMS_G_System_SYSTEM.SystemRole
SMS_G_System_SYSTEM_ACCOUNT.Domain
SMS_R_SYSTEM.PrimaryGroupID
SMS_R_SYSTEM.SMSUniqueIdentifier

Correct Answer:

Answer Area

Collection1:

SMS_G_System_SYSTEM.Domain
SMS_G_System_SYSTEM.SystemRole
SMS_G_System_SYSTEM_ACCOUNT.Domain
SMS_R_SYSTEM.SMSUniqueIdentifier

Collection2:

SMS_G_System_SYSTEM.Domain
SMS_G_System_SYSTEM.SystemRole
SMS_G_System_SYSTEM_ACCOUNT.Domain
SMS_R_SYSTEM.PrimaryGroupID
SMS_R_SYSTEM.SMSUniqueIdentifier

*

All Servers example:

```
select SMS_R_SYSTEM.ResourceID, SMS_R_SYSTEM.ResourceType, SMS_R_SYSTEM.
```

```
Name, SMS_R_SYSTEM.SMSUniqueIdentifier, SMS_R_SYSTEM.ResourceDomainORWorkgroup, SMS_R_SYSTEM.Client from SMS_R_System inner join
```

```
SMS_G_System_SYSTEM on SMS_G_System_SYSTEM.ResourceID =
```

```
SMS_R_System.ResourceID where SMS_G_System_SYSTEM.SystemRole = "Server"
```

*

All Domain Controllers example:

select

SMS_R_SYSTEM.ResourceID,SMS_R_SYSTEM.ResourceType,SMS_R_SYSTEM.Name,SMS_R_SYSTEM.SMSUniq
 ueIdentifier,SMS_R_SYSTEM.ResourceDomainORWorkgroup,SMS_R_SYSTEM.Client from SMS_R_System where

SMS_R_System.PrimaryGroupID= "516"

SMS_G_SYSTEM_ACCOUNT.Domain

SMS_G_SYSTEM.DOMAIN

SMS_R_SYSTEM.SMSUniquelIdentifier

References: Useful ConfigMgr Collection Queries

<http://blogs.technet.com/b/ryanar/archive/2014/01/27/useful-configmgr-collectionqueries.aspx>

QUESTION 8

DRAG DROP

Your network contains a System Center 2012 R2 Configuration Manager Service Pack 1 (SPI) environment.

Your company has a finance department that contains 100 client computers. Only some of the client computers have the Microsoft Application Virtualization (App-V) client installed.

You have a new application named App1.

You need to deploy App1 to all of the users in the finance department.

Which three actions should you perform in sequence? To answer, move the appropriate actions from the list of actions to the answer area and arrange them in the correct order.

Select and Place:

Actions

- Distribute the content to distribution points.
- Configure the App-V client as a requirement of App1.
- Create App1 as a new application.
- Create App1 as a new package in the software library.
- Create a new deployment for App1 and set the deployment to **Required**.
- Create the App-V client as a new application in the software library.



Answer Area



Correct Answer:

Actions

-
-
- Create App1 as a new application.
- Create App1 as a new package in the software library.
-
- Create the App-V client as a new application in the software library.

Answer Area

- Configure the App-V client as a requirement of App1.
 - Create a new deployment for App1 and set the deployment to **Required**.
 - Distribute the content to distribution points.
- >
<

^
v

QUESTION 9

DRAG DROP

Your network contains a System Center 2012 R2 Configuration Manager Service Pack 1 (SP1) environment.

Your company has a security policy that contains mandatory registry settings for all servers.

You have a collection named Servers that contains all of the servers.

You need to identify which servers do not comply with the security policy.

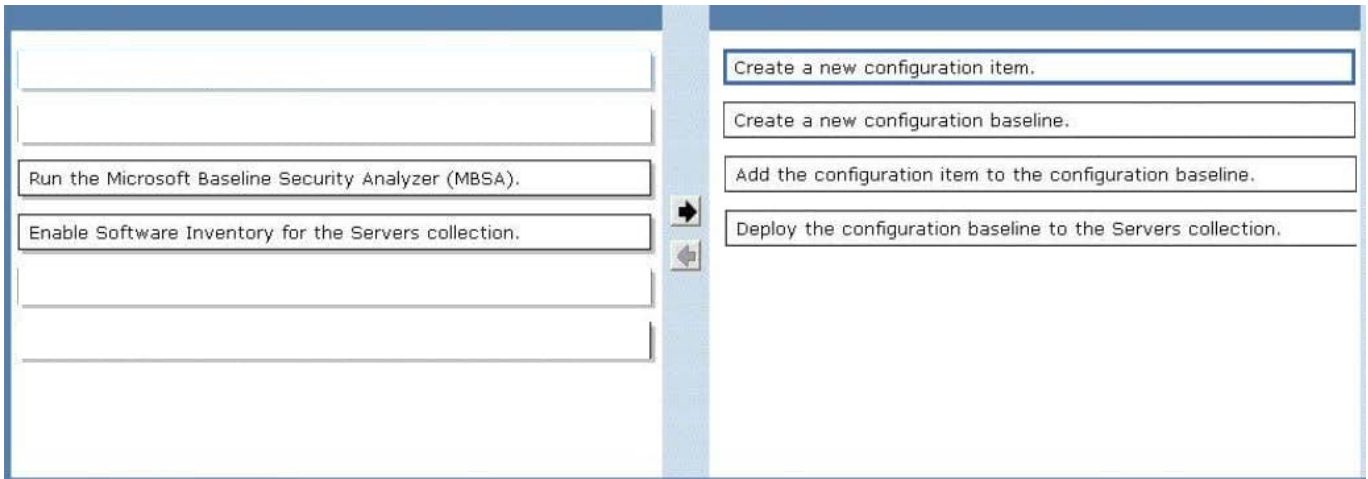
Which four actions should you perform in sequence? To answer, move the appropriate actions from the list of actions to the answer area and arrange them in the correct order.

Select and Place:

- Create a new configuration item.
- Create a new configuration baseline.
- Run the Microsoft Baseline Security Analyzer (MBSA).
- Enable Software Inventory for the Servers collection.
- Add the configuration item to the configuration baseline.
- Deploy the configuration baseline to the Servers collection.

→
←

Correct Answer:



QUESTION 10

DRAG DROP

Your network contains a System Center 2012 R2 Configuration Manager Service Pack 1 (SP1) environment.

You create a collection named All Managed Servers.

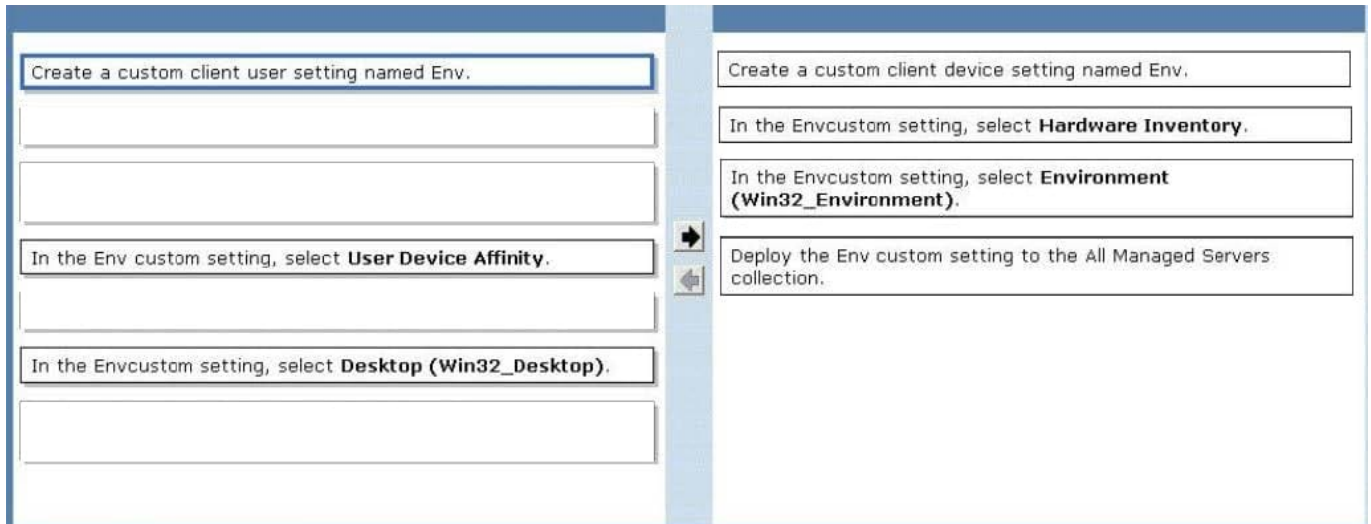
You need to inventory the environment variables of the All Managed Servers collection.

Which four actions should you perform in sequence? To answer, move the appropriate actions from the list of actions to the answer area and arrange them in the correct order.

Select and Place:



Correct Answer:



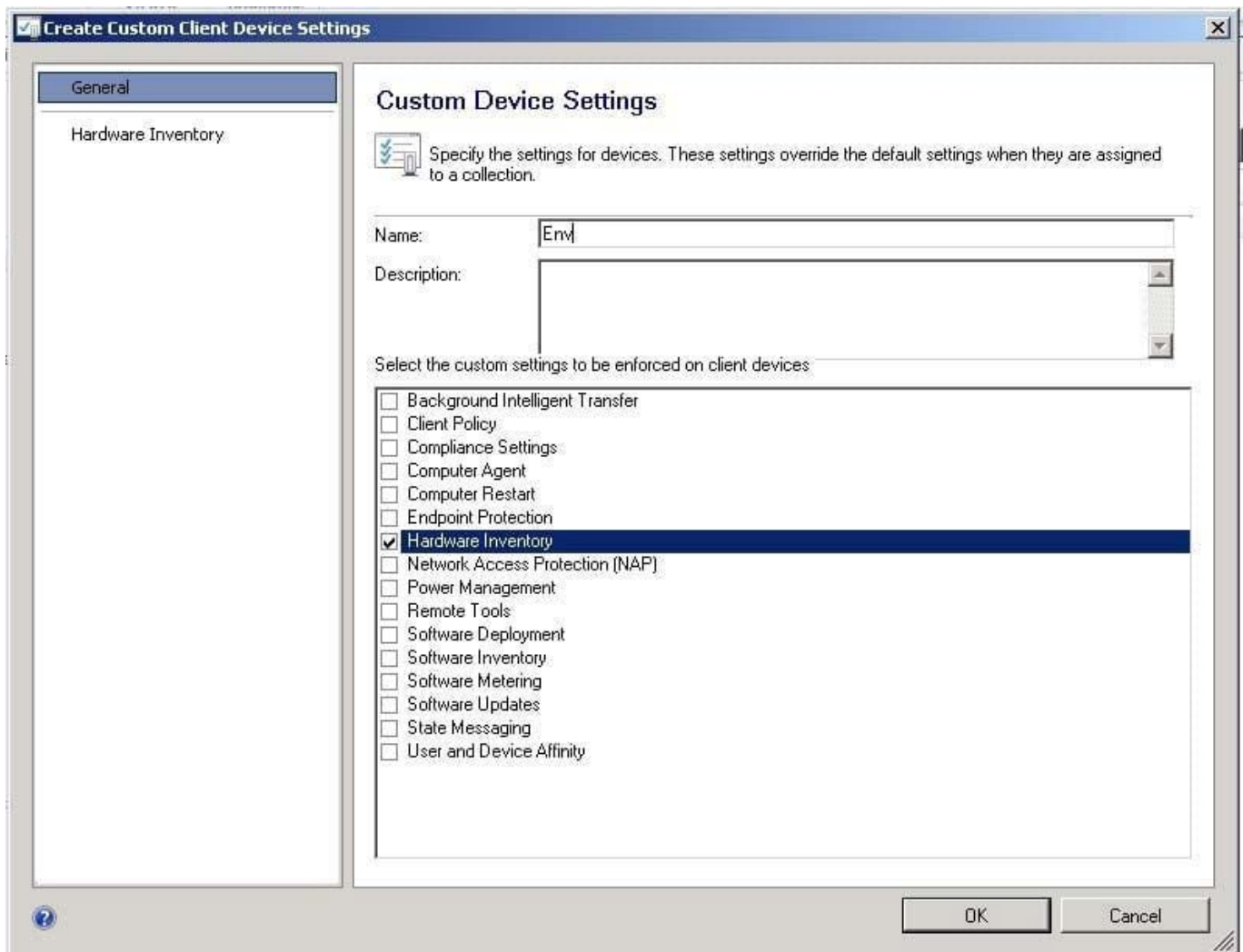
* Win32_Environment class (Windows)

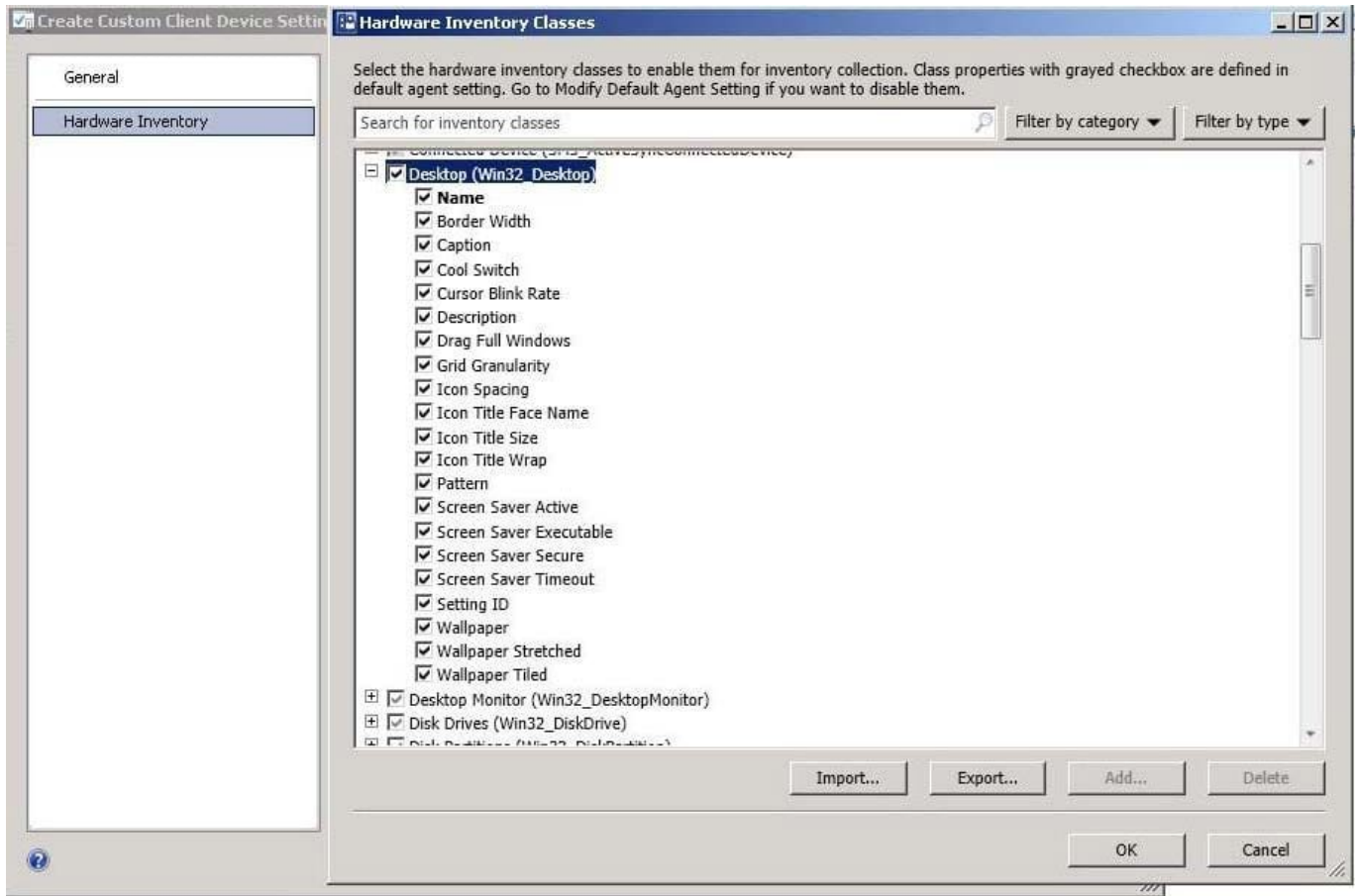
TheWin32_Environment WMI class represents an environment or system environment setting on a Windows computer system. Querying this class returns environment variables found in:

HKEY_LOCAL_MACHINE\System\CurrentControlSet\Control\Sessionmanager\Environment

And HKEY_USERS\Environment

Since we need to inventory WMI information, that means we need Hardware Inventory and you can only do that with a Custom Client Device Setting:





QUESTION 11

DRAG DROP

You have a System Center 2012 R2 Configuration Manager Service Pack 1 (SP1) deployment that contains the servers configured as shown in the following table.

Server name	Configuration	Site
Server1	Central Administration site	C00
Server2	Primary site server	C01
Server3	Secondary site server Windows Server Update Services (WSUS)	C02
Server4	Windows Server Update Services (WSUS)	C01
Server5	Windows Server Update Services (WSUS)	C01

You need to ensure that Server3, Server4, and Server5 can be used to deploy software updates to Configuration Manager clients. The Configuration Manager clients in the primary site must be able to receive updates if one of the WSUS

servers becomes unavailable.

Which four actions should you perform in sequence? To answer, move the appropriate actions from the list of actions to the answer area and arrange them in the correct order.

Select and Place:

Actions		Answer Area
Install WSUS on Server1.		
Add a software update point on Server1.		
Add a software update point on Server2.		
Add a software update point on Server3.	➤	⬆
Add a software update point on Server4 and Server5.	⬅	⬇
Install Network Load Balancing (NLB) on Server3 and Server4.		

Correct Answer:

Actions		Answer Area
		Install WSUS on Server1.
		Add a software update point on Server1.
Add a software update point on Server2.		Add a software update point on Server4 and Server5.
		Add a software update point on Server3.
	⬅	⬇
Install Network Load Balancing (NLB) on Server3 and Server4.		

Box 1: Install WSUS on Server1.

Box 2: Add a software update point on Server1.

Box 3: Add a software update point on Server4 and Server5.

Box 4: Add a software update point on Server3.

Note:

*

The software update point is required on the central administration site and on the primary sites to enable the software updates compliance assessment and to deploy software updates to clients. The software update point is optional on secondary sites.

*

When you have a Configuration Manager hierarchy, install and configure the software update point at the central administration site first, and then install and configure the software update point on other sites.

QUESTION 12

DRAG DROP

You have a System Center 2012 R2 Configuration Manager Service Pack 1 (SP1) stand-alone primary site.

You need to create a configuration item that detects the version of an installed application based on a registry value. If version 3 of the application is not installed, the configuration item must install version 3 of the application.

How should you configure the configuration item? To answer drag the appropriate options to the correct locations. Each option may be used once, more than once, or not at all. You may need to drag the split bar between panes or scroll to

view content.

Select and Place:

Options

Answer Area

- Registry value
- Script
- WQL query

Setting type:

Remediation method:

Correct Answer:

Options

Answer Area

-
-
- WQL query

Setting type:

Remediation method:

QUESTION 13

HOTSPOT

You have a System Center 2012 R2 Configuration Manager Service Pack 1 (SP1) deployment.

You need to build a task sequence to create a VHD that contains a deployment of Windows 8.1.

What should be the first and last action of the task sequence? To answer, select the appropriate options in the answer area.

Hot Area:

Answer Area

First task:

	▼
Capture User State	
Prepare ConfigMgr Client for Capture	
Prepare Windows for Capture	
Restart Computer	
Set Task Sequence Variable	

Last task:

	▼
Capture Operating System Image	
Restore User State	
Run Command Line	
Setup Windows and ConfigMgr	

Correct Answer:

Answer Area

First task:

	▼
Capture User State	
Prepare ConfigMgr Client for Capture	
Prepare Windows for Capture	
Restart Computer	
Set Task Sequence Variable	

Last task:

	▼
Capture Operating System Image	
Restore User State	
Run Command Line	
Setup Windows and ConfigMgr	

Box 1: Prepare configmgrfor capture This task sequence step takes the Configuration Manager 2007 client on the reference computer andprepares it for capture as part of the imaging process Box 2: Use the Capture Operating System Image task sequence step to capture one or more images from a reference computer and store them in a WIM file on the specified network share

References: <https://technet.microsoft.com/en-us/library/gg682199.aspx>
https://technet.microsoft.com/enus/library/hh846237.aspx#BKMK_PrepareConfigMgrClientforCapture

https://technet.microsoft.com/enus/library/hh846237.aspx#BKMK_CaptureOperatingSystemImage

QUESTION 14

HOTSPOT

You have a System Center 2012 R2 Configuration Manager Service Pack 1 (SP1) deployment.

You have two domain users named User1 and User2.

The users will perform the following administrative tasks:

- User1 will create device collections.
- User2 will create and deploy configuration baselines.

You need to identify to which security role each user must be added. The solution must use the principle of least privilege. Which security roles should you identify? To answer, select the appropriate options in the answer area.

Hot Area:

Answer Area

Option

User1:	<div style="border: 1px solid black; padding: 5px;"><div style="border: 1px solid black; height: 20px; margin-bottom: 5px;"></div><div style="border: 1px solid black; padding: 2px;">Application Author</div><div style="border: 1px solid black; padding: 2px;">Asset Manager</div><div style="border: 1px solid black; padding: 2px;">Company Resource Access Manager</div><div style="border: 1px solid black; padding: 2px;">Operations Administrator</div></div>
User2:	<div style="border: 1px solid black; padding: 5px;"><div style="border: 1px solid black; height: 20px; margin-bottom: 5px;"></div><div style="border: 1px solid black; padding: 2px;">Application Deployment Manager</div><div style="border: 1px solid black; padding: 2px;">Company Resource Access Manager</div><div style="border: 1px solid black; padding: 2px;">Asset Manager</div><div style="border: 1px solid black; padding: 2px;">Compliance Settings Manager</div><div style="border: 1px solid black; padding: 2px;">Security Administrator</div></div>

Correct Answer:

Answer Area

Option

User1:

Application Author
Asset Manager
Company Resource Access Manager
Operations Administrator

User2:

Application Deployment Manager
Company Resource Access Manager
Asset Manager
Compliance Settings Manager
Security Administrator

QUESTION 15

HOTSPOT

You have a System Center 2012 R2 Configuration Manager Service Pack 1 (SP1) primary site named S01 that includes the servers configured as shown in the following table.

Server name	Configuration
Server1	Configuration Manager
Server2	Microsoft SQL Server 2012 Service Pack 2 (SP2)

You perform regular site backups by using Configuration Manager.

You create a test environment that is isolated completely from the production network. The Active Directory configuration in the test environment and the production environment are identical.

A user named User1 plans to test disaster recovery procedures by using servers in the test environment. The servers are configured as shown in the following table.

Server name	Configuration
ServerA	Member server
ServerB	SQL Server 2012 SP2

User1 is a member of the Administrators group on ServerA and ServerB.

You need to enable User1 to reinstall Configuration Manager manually on ServerA and to use the Recovery Wizard to restore the database on ServerB.

What should you do? To answer, select the appropriate options in the answer area.

Hot Area:

Answer Area

Before User1 reinstalls Configuration Manager, you must:

- Rename ServerA
- Rename ServerB
- Grant ServerA Full Control permissions to the System container
- Grant User1 Full Control permissions to the ServerA computer object

Before you can restore the site database, you must:

- Rename ServerB
- Create an empty database named CM_S01
- Run the Restore-DscConfiguration cmdlet
- Delete the Configuration Manager database

Correct Answer:

Answer Area

Before User1 reinstalls Configuration Manager, you must:

- Rename ServerA
- Rename ServerB
- Grant ServerA Full Control permissions to the System container
- Grant User1 Full Control permissions to the ServerA computer object

Before you can restore the site database, you must:

- Rename ServerB
- Create an empty database named CM_S01
- Run the Restore-DscConfiguration cmdlet
- Delete the Configuration Manager database

* When we have created the system management container, we must grant the site server's computer account the permissions that are required to publish site information to the container. The primary site server computer account must be granted Full Control permissions to the System Management container and all its child objects.