

600-660^{Q&As}

Implementing Cisco Application Centric Infrastructure - Advanced

Pass Cisco 600-660 Exam with 100% Guarantee

Free Download Real Questions & Answers **PDF** and **VCE** file from:

<https://www.leads4pass.com/600-660.html>

100% Passing Guarantee
100% Money Back Assurance

Following Questions and Answers are all new published by Cisco
Official Exam Center

- ⚙ **Instant Download** After Purchase
- ⚙ **100% Money Back** Guarantee
- ⚙ **365 Days** Free Update
- ⚙ **800,000+** Satisfied Customers



QUESTION 1

DRAG DROP

Drag and drop the tenant implementation designs from the left onto the outcomes of the design when a greenfield Cisco ACI fabric is deployed on the right.

Select and Place:

Answer Area

VRF configured in common tenant; BDs and EPGs configured in dedicated tenants.	One organization without RBAC requirements owns all of the configuration.
VRF and BDs configured in common tenant; EPGs configured in user tenants.	Different organizations can have overlapping subnets.
VRF, BD, and EPG configured in common tenant.	Organizations use different tenants and share the same subnets.
VRF, BD, and EPG configured in user tenants.	Each organization has access only to dedicated resources, tied into RBAC rules.

Correct Answer:

Answer Area

	VRF, BD, and EPG configured in user tenants.
	VRF, BD, and EPG configured in common tenant.
	VRF configured in common tenant; BDs and EPGs configured in dedicated tenants.
	VRF and BDs configured in common tenant; EPGs configured in user tenants.

QUESTION 2

How is broadcast forwarded in Cisco ACI Multi-Pod after ARP flooding is enabled?

- A. For the specific bridge domain, all spines forward the broadcast frames to IPN routers
- B. Broadcast frames are forwarded inside the pod and across the IPN using the multicast address that is associated to the bridge domain
- C. Within a pod, the ingress leaf switch floods the broadcast frame on all fabric ports
- D. Ingress replication is used on the spines to forward broadcast frames in the IPN infrastructure

Correct Answer: A

QUESTION 3

An engineer designs a Cisco ACI Multi-Pod solution that requires a pair of active-standby firewalls in different pods for external connectivity. How should the firewalls be implemented?

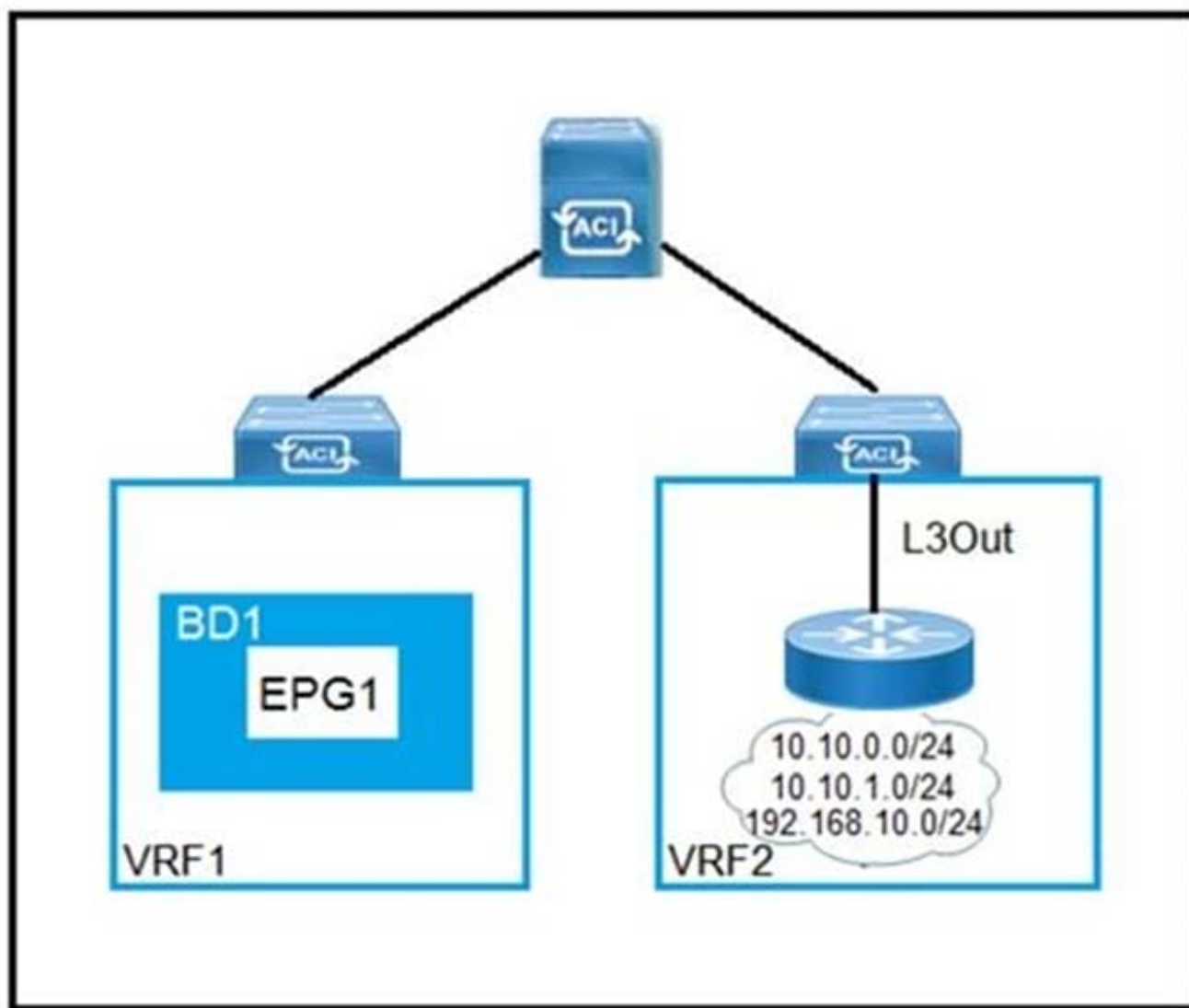
- A. PBR for routed firewalls
- B. separate L3Out peerings for routed firewalls
- C. routed firewall for the default gateway
- D. transparent firewalls

Correct Answer: D

Reference: <https://www.cisco.com/c/en/us/solutions/collateral/data-center-virtualization/application-centric-infrastructure/white-paper-c11-739571.html>

QUESTION 4

DRAG DROP



Refer to the exhibit. Drag and drop the subnets and flags from the left into the External Network Instance Profile policies on the right to create a setup that advertises only 10.10.0.0/24 and 10.10.1.0/24 prefixes in VRF1 and establishes connectivity between VRFs. Not all options are used.

Select and Place:

Answer Area

10.10.0.0/16	IP Address
10.10.0.0/23	IP Address
0.0.0.0/0	Scope
External Subnets for the External EPG	Scope 1
Export Route Control Subnet	Scope 2
Shared Route Control Subnet	Scope 3
Import Route Control Subnet	Aggregate
Shared Security Import Subnet	Aggregate
Aggregate Export	
Aggregate Import	
Aggregate Shared	

Correct Answer:

Answer Area

	IP Address <div>10.10.0.0/16</div>
10.10.0.0/23	
0.0.0.0/0	Scope <div>Shared Route Control Subnet</div> <div>Shared Security Import Subnet</div> <div>External Subnets for the External EPG</div>
Export Route Control Subnet	
Import Route Control Subnet	Aggregate <div>Aggregate Shared</div>
Aggregate Export	
Aggregate Import	

QUESTION 5

DRAG DROP

A leaf receives unicast traffic that is destined to an unknown source, and spine proxy is enabled in the corresponding bridge domain. Drag and drop the Cisco ACI forwarding operations from the left into the order the operation occurs on the right.

Select and Place:

Answer Area

Spine lookup occurs dMACi or dIPi

Packet is sent out of the fabric

Packet is routed in VRF overlay-1 based on dIPo

Source leaf forwards the packet to anycast TEP encapsulated with VXLAN header

Packet reaches destination leaf and is VXLAN decapsulated

Step 1

Step 2

Step 3

Step 4

Step 5

Correct Answer:

Answer Area

Source leaf forwards the packet to anycast TEP encapsulated with VXLAN header

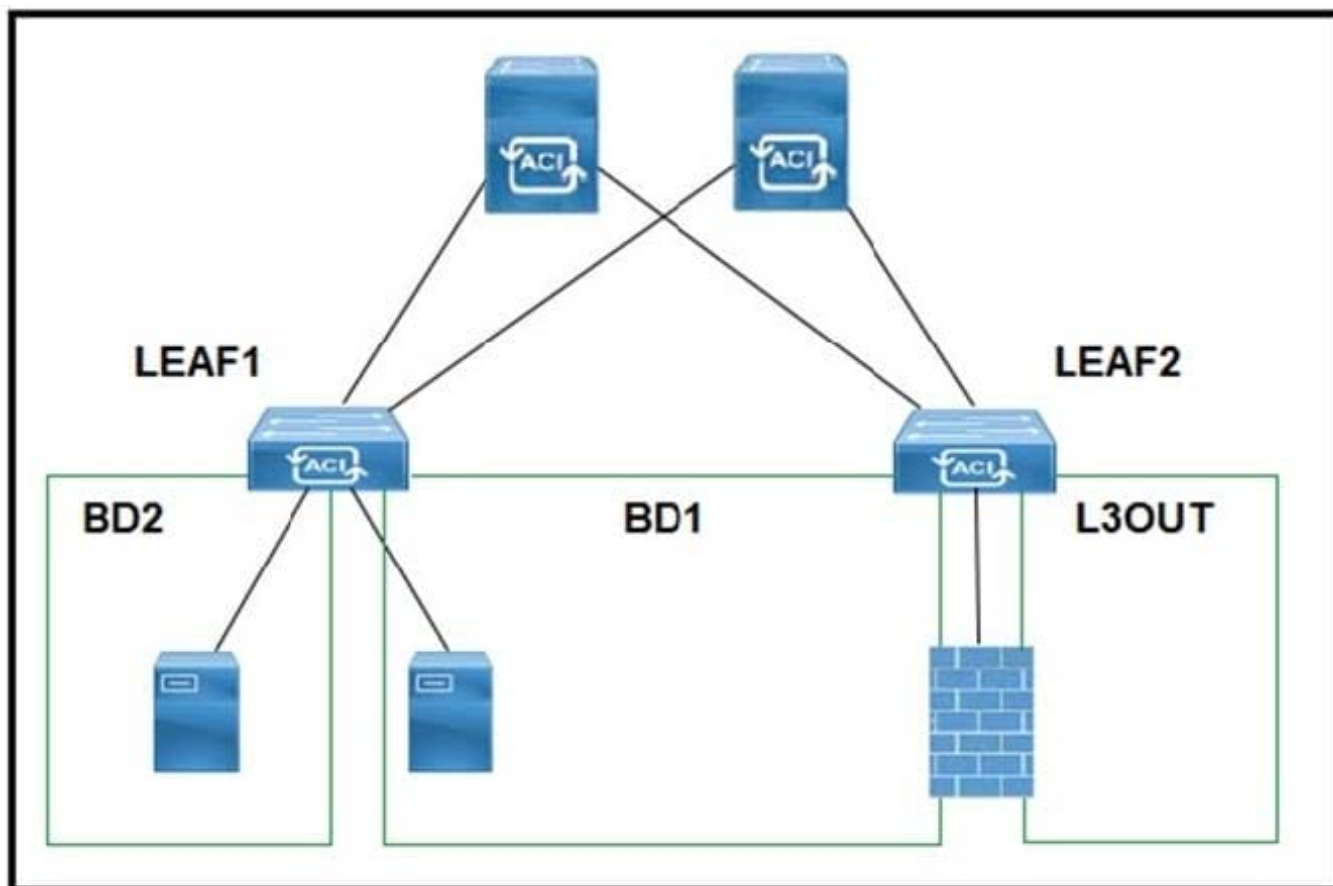
Spine lookup occurs dMACi or dIPi

Packet is sent out of the fabric

Packet reaches destination leaf and is VXLAN decapsulated

Packet is routed in VRF overlay-1 based on dIPo

QUESTION 6

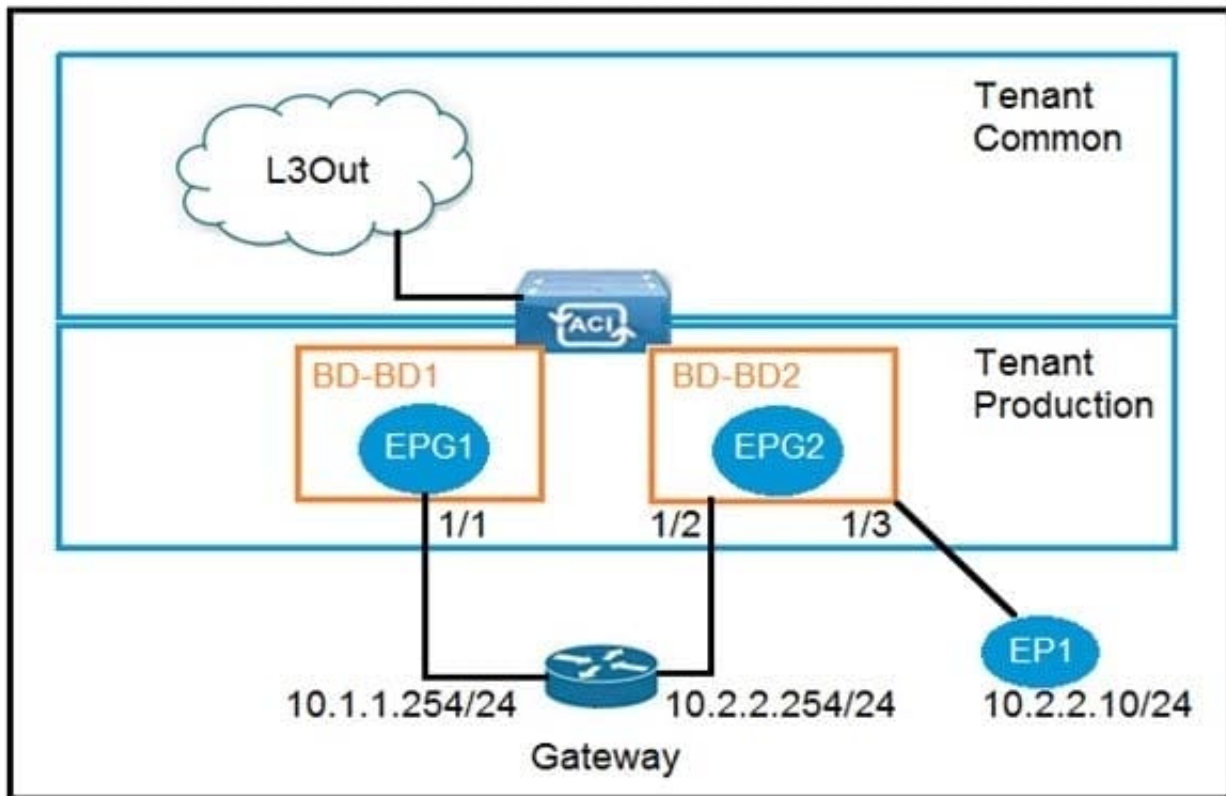


Refer to the exhibit. A customer experiences resource overconsumption on one of its border leaf switches. Which action should be taken to reduce the consumption on this switch?

- A. Disable VRF Policy Control Enforcement
- B. Disable IP Data Plane Learning
- C. Migrate L3Outs to another switch
- D. Disable Remote EP Learning

Correct Answer: B

QUESTION 7



Refer to the exhibit. An engineer wants to avoid connectivity problems for the endpoint EP1 when it reaches an external L3Out network through the gateway 10.2.2.254/24. Which two configurations must be implemented in BD-BD2? (Choose two.)

- A. Disable unicast routing
- B. Enable IP data plane learning for the VRF
- C. Disable ARP flooding
- D. Enable ARP flooding
- E. Enable unicast routing

Correct Answer: AC

QUESTION 8

Which approach does Cisco ACI use to achieve multidestination packet forwarding between leaf switches in the same fabric?

- A. Map VXLAN VTEP to the multicast group
- B. Map VXLAN to PIM-SM protocol
- C. Map VXLAN VNI to the multicast group
- D. Map VXLAN to PIM-DM protocol

Correct Answer: C

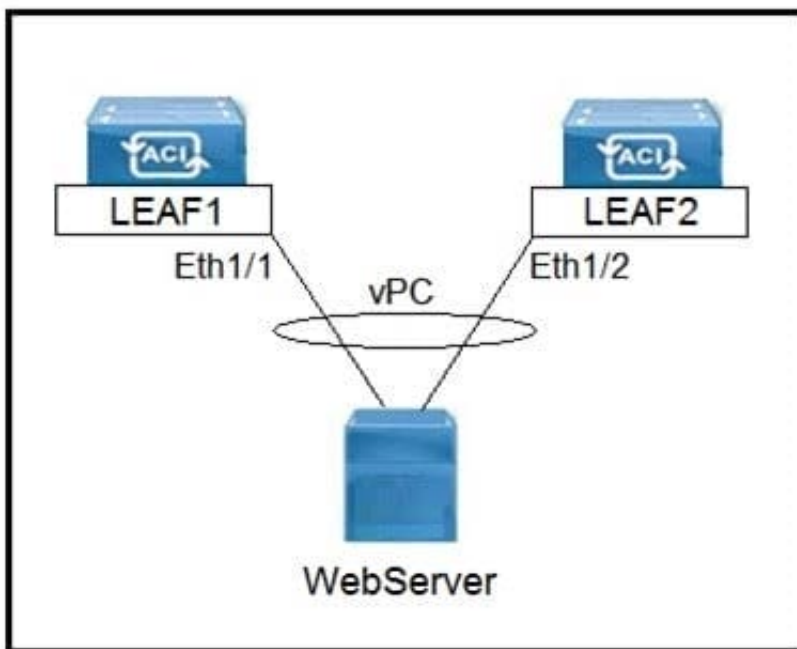
QUESTION 9

A network engineer configured an active-active firewall cluster that is stretched across separate pods in the Cisco ACI fabric. Which two implementation setups for anycast services are available? (Choose two.)

- A. Modify the Cisco ACI contract scope
- B. Modify the MAC address on the second firewall
- C. Configure the firewalls behind an EPG subnet
- D. Deselect No Default SVI Gateway under EPG Subnet
- E. Deploy a Layer 4 to Layer 7 service graph with PBR

Correct Answer: BC

QUESTION 10



Refer to the exhibit. Which three actions should be taken to implement the vPC in the Cisco ACI fabric? (Choose three.)

- A. Select a common vPC interface policy group
- B. Select individual interface profiles
- C. Select common interface profiles
- D. Select individual switch profiles

E. Select common switch profiles

Correct Answer: ABE

[600-660 PDF Dumps](#)

[600-660 Practice Test](#)

[600-660 Braindumps](#)