

# 4A0-C04<sup>Q&As</sup>

Nokia NRS II Composite Exam: OSPF version

## Pass Nokia 4A0-C04 Exam with 100% Guarantee

Free Download Real Questions & Answers **PDF** and **VCE** file from:

<https://www.leads4pass.com/4a0-c04.html>

100% Passing Guarantee  
100% Money Back Assurance

Following Questions and Answers are all new published by Nokia  
Official Exam Center

- ⚙ **Instant Download** After Purchase
- ⚙ **100% Money Back** Guarantee
- ⚙ **365 Days** Free Update
- ⚙ **800,000+** Satisfied Customers



## QUESTION 1

If the Nokia 7750 SR is rebooted after an "admin save\\\\" has been performed, which of the following about mirror services is TRUE?

- A. Only the mirror source must be re-configured.
- B. Only the mirror destination must be re-configured.
- C. Both the mirror destination and mirror source must be re-configured.
- D. Neither the mirror destination nor the mirror source must be re-configured.

Correct Answer: A

## QUESTION 2

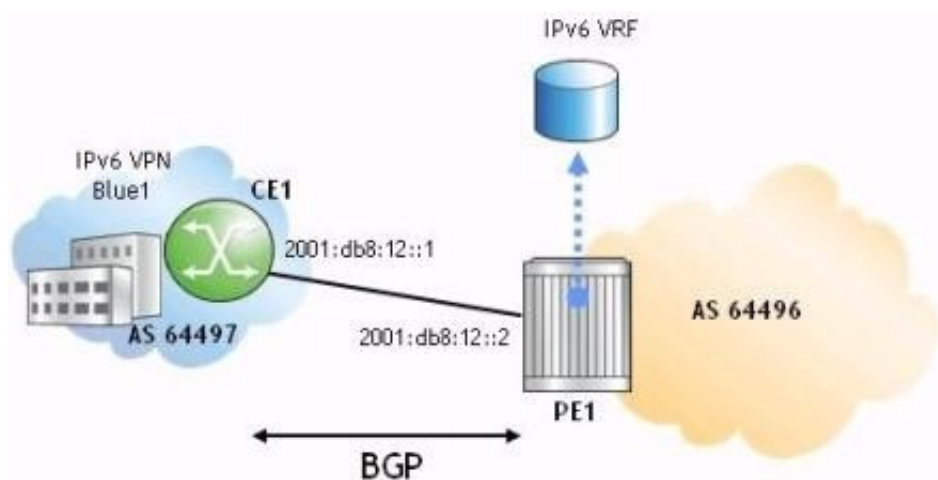
Which of the following about SDPs is FALSE?

- A. An SDP is not required for a local service.
- B. A single SDP can carry different types of services.
- C. An SDP can simultaneously support GRE and MPLS encapsulation.
- D. An SDP can use the system IP address to indicate the far-end router.

Correct Answer: C

## QUESTION 3

Click the exhibit button.



Part of a 6VPE deployment is shown. Which of the following is the correct configuration and context on router CE1 for a BGP peering session with 6VPE1?

○ A. CE1>config>service>vpn>bgp# info

```
-----
group "to6VPE1"
  family ipv6
  export "direct-bgp"
  neighbor 2001:db8:12::1
    peer-as 64497
  exit
exit
```

○ B. CE1>config>service>vpn>bgp# info

```
-----
group "to6VPE1"
  family ipv6
  export "direct-bgp"
  neighbor 2001:db8:12::2
    peer-as 64496
  exit
exit
```

○ C. CE1>config>router>bgp# info

```
-----
group "to6VPE1"
  family ipv6
  export "direct-bgp"
  neighbor 2001:db8:12::1
    peer-as 64497
  exit
exit
```

○ D. CE1>config>router>bgp# info

```
-----
group "to6VPE1"
  family ipv6
  export "direct-bgp"
  neighbor 2001:db8:12::2
    peer-as 64496
  exit
exit
```

A. Option A

B. Option B

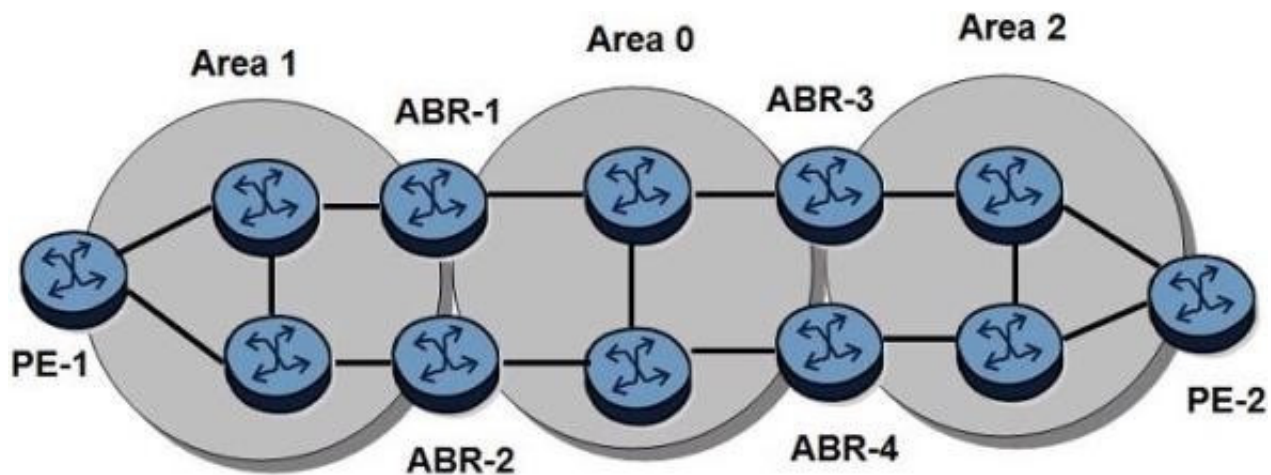
C. Option C

D. Option D

Correct Answer: D

## QUESTION 4

Click on the exhibit.



An LDP-over-RSVP tunnel is established between PE-1 and PE-2. Which of the following is NOT required to protect the LDP-over-RSVP tunnel?

- A. PE-1 requires T-LDP sessions to both ABR-1 and ABR-2.
- B. PE-1 requires a full mesh of RSVP-TE LSPs to all routers in area 1.
- C. ABR-1 requires T-LDP sessions to all ABRs in area 0.
- D. PE-1 requires fast reroute enabled on all RSVP-TE LSPs.

Correct Answer: B

## QUESTION 5

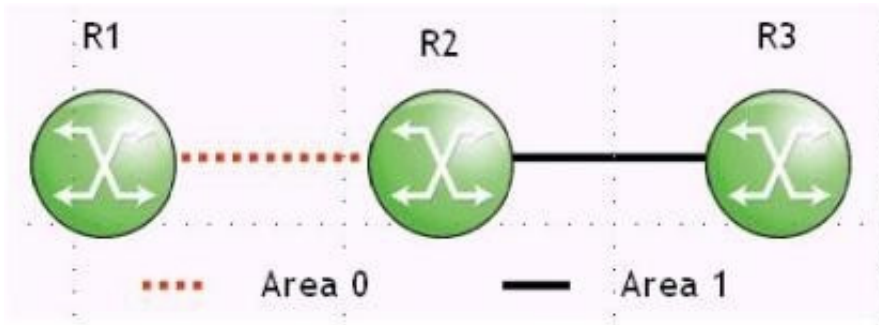
Which of the following about ADSPEC is FALSE?

- A. ADSPEC sets an SDP's MTU to the smallest MTU value found along the LSP path.
- B. RSVP must be enabled on all MPLS routers of a path to use ADSPEC.
- C. ADSPEC can automatically adjust the service MTU.
- D. ADSPEC can be enabled on individual LSPs.

Correct Answer: C

## QUESTION 6

Click on the exhibit button below:



Consider the following:

-Router R2 is an ABR in OSPF Areas 0 and 1.

-

Router R2 advertises the aggregate prefix 10.10.10.0/24 into Area 1.

-

Router R1 in Area 0 generates LDP labels for FECs 10.10.102/31 and 10.10.10.4/31

Router R3 in Area 1 places these FECs in its LIB, but it does not place them in its LFIB. What can you do on router R3 to make it populate these labels in its LFIB?

A.

Disable route summarization on router R3

B.

Enable LDP aggregate prefix match

C.

Create an import policy to accept these FECs

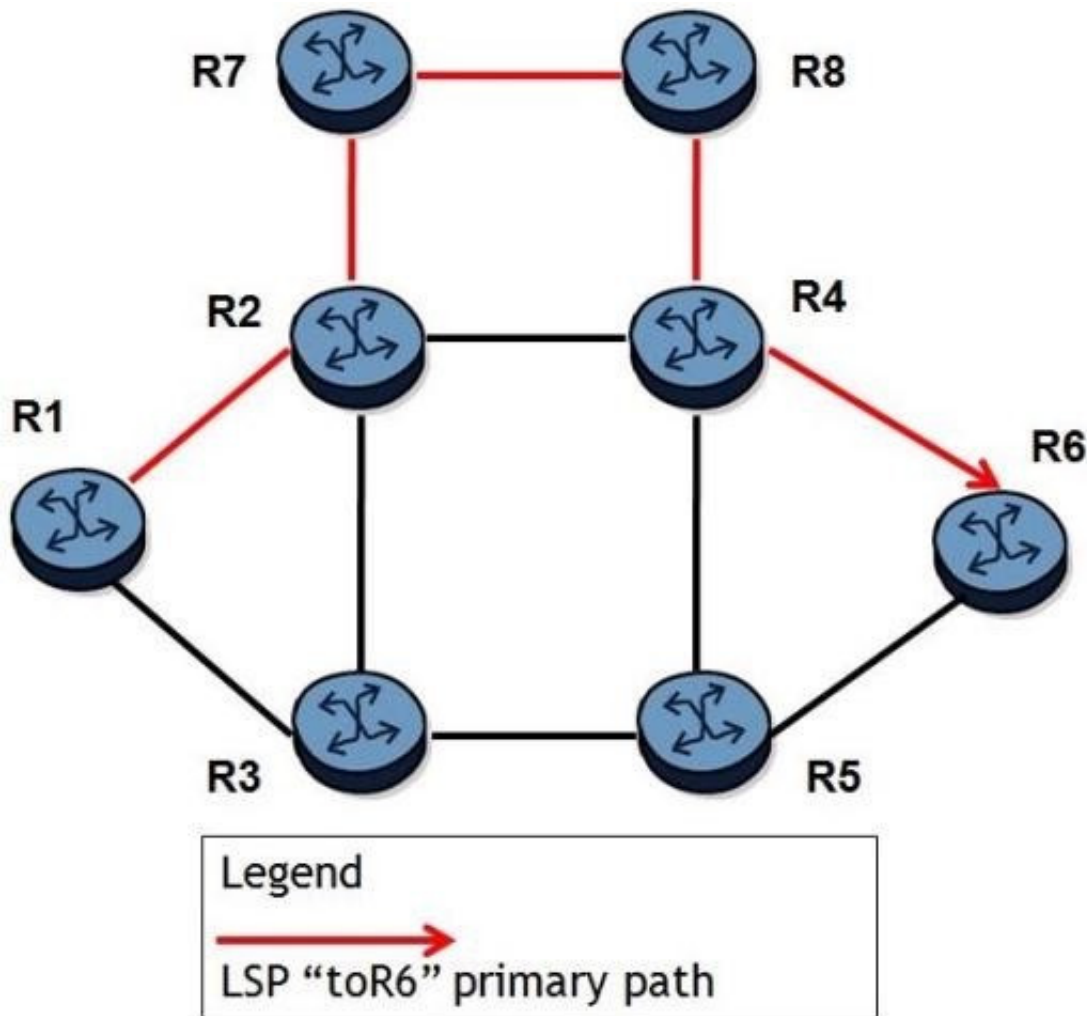
D.

Disable LDP exact match on the specified FECs

Correct Answer: B

## QUESTION 7

Click on the exhibit.



A fully loose LSP "toR6" is configured. All links have the same cost and all routers are Nokia 7750 SRs. The LSP currently traverses the path R1-R2-R7-R8-R4-R6 and the resignal timer is enabled. Which of the following about this LSP is FALSE?

- A. The LSP will switchover to another path if a failure occurs.
- B. The LSP will switchover to a better path as soon as it is available.
- C. CSPF must be enabled for this LSP to attempt to find a better path.
- D. The LSP will switchover to a better path in a MBB fashion.

Correct Answer: B

### QUESTION 8

Which of the following types of networks are supported on an Nokia 7750 SR for OSPF? Choose two answers.

- A. Broadcast
- B. Non-broadcast multi-access

- C. Point-to-point
- D. Point-to-multipoint

Correct Answer: AC

---

## QUESTION 9

Click on the exhibit. After the lsp-ping command is executed, which of the following best describe the router's action?

- A. MPLS Echo Request packets are sent within the RSVP-TE tunnel that is signaled for "lsp-toR2".
- B. MPLS Echo Request packets are sent within the LDP tunnel that is signaled for Mlsp- toR2".
- C. MPLS Echo Request packets are IP-routed to the destination address of "lsp-toR2".
- D. MPLS Echo Request packets are sent to the destination address of "lsp-toR2" over TCP.

Correct Answer: A

---

## QUESTION 10

A router receives an OSPF database description packet from a neighbor that references an LSA, which is already in the router's LSDB. The sequence number in the DBD packet is lower than the sequence number of the LSA in the LSDB.

What action does the router take?

- A. The router sends a link-state update to its neighbor.
- B. The router sends a link-state acknowledgement to its neighbor.
- C. The router updates the information in its LSDB with the information received from its neighbor.
- D. The router sends a link-state request to its neighbor.
- E. The router takes no action.

Correct Answer: A

---

## QUESTION 11

Which of the following about an ERO in an RSVP PATH message is FALSE?

- A. ERO is used by downstream routers to determine the next-hop for the LSP.
- B. ERO contains label information used to signal an LSP path.
- C. ERO is not always present in the PATH message.
- D. Each downstream router updates information inside the ERO.



Correct Answer: B

## QUESTION 12

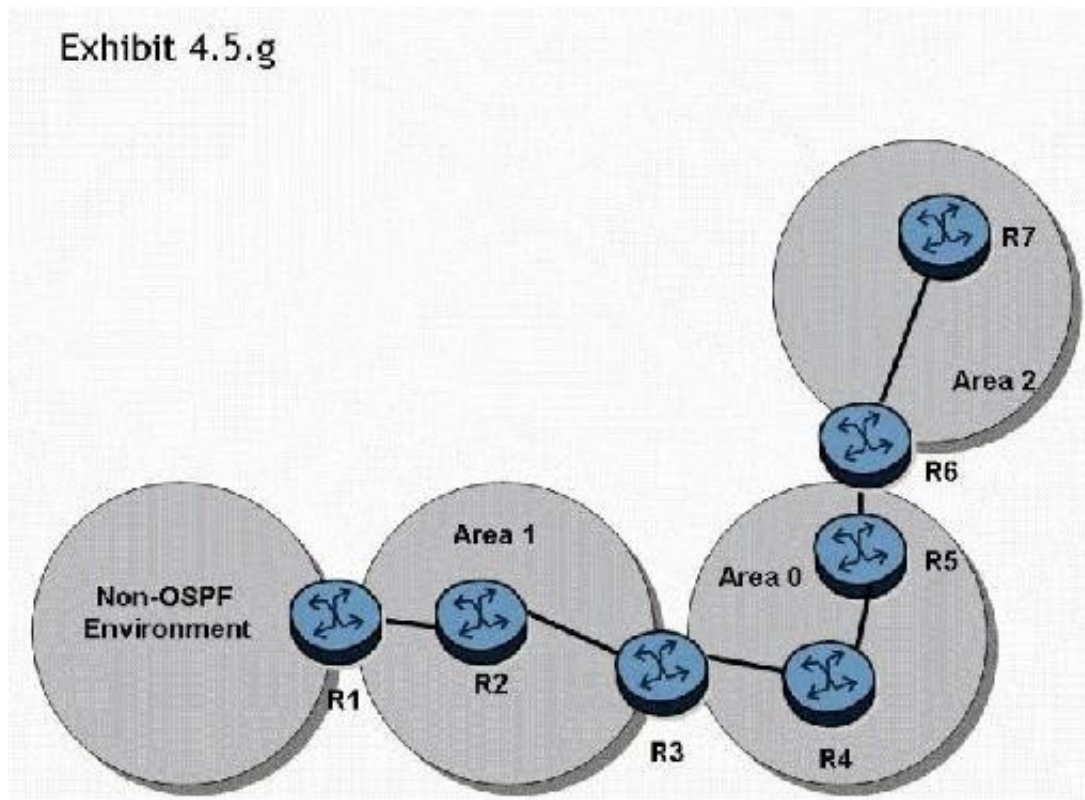
A VPLS has a service MTU of 1600. To create an IES spoke termination to the VPLS, what ip-mtu value must be used for the IES?

- A. 1586
- B. 1596
- C. 1600
- D. 1614

Correct Answer: A

## QUESTION 13

Click the exhibit button.



In the topology shown, router R1 is an ASBR configured to export external routes to OSPF. Assuming that there are no stub networks, which of the following statements regarding type 4 LSA generation is true?

- A. Router R1 generates a type 4 LSA that is flooded to areas 0, 1, and 2.



- B. Router R3 generates a type 4 LSA that is flooded to areas 0, 1, and 2.
- C. Router R3 generates a type 4 LSA that is flooded to areas 0 and 2.
- D. Router R3 generates a type 4 LSA that is flooded to area 0, and router R6 generates a type 4 LSA that is flooded to area 2.

Correct Answer: D

---

#### QUESTION 14

An OSPF adjacency is stuck in the exstart state. What is the most likely cause?

- A. The MTU does not match on both interfaces.
- B. OSPF is not enabled on one of the routers.
- C. The router ID is the same on both routers.
- D. An OSPF Hello has not been received from the neighbor.
- E. The interfaces are configured as point-to-point on one side and broadcast on the other.

Correct Answer: A

---

#### QUESTION 15

What is the result of configuring the following policy statement as a BGP import policy on the Nokia 7750 SR?

```
policy-statement "Policy-1"  
  entry 10  
    from  
      protocol bgp  
      prefix-list "List-1" "List-2"  
    exit  
    action reject  
  exit  
exit  
default-action accept
```

- A. All BGP routes are accepted.
- B. All routes matching prefix lists "List-1" and "List-2" are rejected.
- C. BGP routes matching prefix lists "List-1" or "List-2" are rejected.

D. BGP routes matching prefix lists "List-1" and "List-2" are rejected.

Correct Answer: C

[Latest 4A0-C04 Dumps](#)

[4A0-C04 Practice Test](#)

[4A0-C04 Study Guide](#)