

4A0-C01^{Q&As}

Nokia NRS II Composite Exam

Pass Nokia 4A0-C01 Exam with 100% Guarantee

Free Download Real Questions & Answers **PDF** and **VCE** file from:

<https://www.leads4pass.com/4a0-c01.html>

100% Passing Guarantee
100% Money Back Assurance

Following Questions and Answers are all new published by Nokia
Official Exam Center

- ⚙ **Instant Download** After Purchase
- ⚙ **100% Money Back** Guarantee
- ⚙ **365 Days** Free Update
- ⚙ **800,000+** Satisfied Customers



QUESTION 1

Which of the following LDP message categories is UDP-based?

- A. Notification
- B. Session
- C. Discovery
- D. Advertisement

Correct Answer: C

QUESTION 2

Click on the exhibit.

? LSA for Area 0.0.0.0			

Area Id	: 0.0.0.0	Adv Router Id	: 10.10.10.4
Link State Id	: 0.0.0.2 (2)		
LSA Type	: ?		
Sequence No	: 0x80000001	Checksum	: 0xb111
Age	: 623	Length	: 32
Options	: --R--EV6	No of Adj Rtrs	: 2
Router Id (1)	: 10.10.10.4	Router Id (2)	: 10.10.10.2

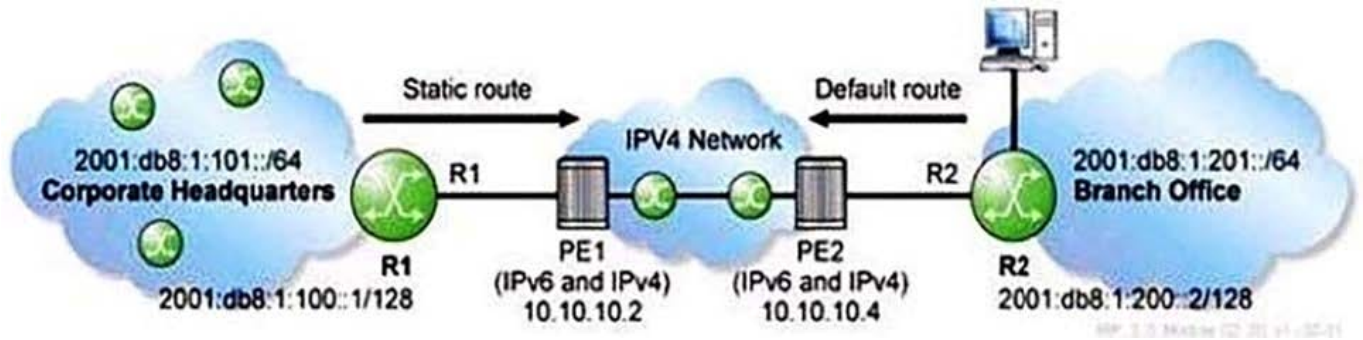
What type of OSPFv3 LSA is shown?

- A. Router LSA
- B. Network LSA
- C. Inter-Area Prefix LSA
- D. Link LSA

Correct Answer: B

QUESTION 3

A service provider is deploying a 6over4 tunnel to connect a customer's branch office IPv6 network to the corporate headquarters as shown in the exhibit. Which command is used to create a default route on PE2 for the branch office network?



- A. configure router static-route 0.0.0.0/0 indirect 10.10.10.2
- B. configure router static-route 0.0.0.0/0 indirect 2001:DB8:l:100::l
- C. configure router static-route ::/0 indirect 10.10.10.2
- D. configure router static-route ::/0 indirect 2001:DB8:l:100::l
- E. configure router static-route ::/0 indirect 2001:DB8:l:101::l

Correct Answer: C

QUESTION 4

When configuring an LSP for fast reroute one-to-one protection, which of the following statements is true?

- A. The LSP can also use facility backup.
- B. The LSP is limited to node protection.
- C. You cannot request bandwidth on the protected LSP.
- D. Node protection can be disabled.

Correct Answer: D

QUESTION 5

What is the purpose of service mirroring on the Alcatel-Lucent Service Router?

- A. To mirror service requirements of a customer with a single branch office and multiple remote sites
- B. To utilize unused ports of a service router until they are required for a service.
- C. To replicate traffic from a service port to another port for debugging or monitoring functions
- D. To ease the configuration burden of services that support a large number of subscribers
- E. All of the above

Correct Answer: C

QUESTION 6

Which of the following about configuring a distributed E-pipe service is TRUE ?

- A. The VC ID on the mesh SDP must be explicitly configured.
- B. The VC ID on the spoke SDP must be explicitly configured.
- C. The VC ID on the mesh SDP does not have to be explicitly configured and it will use the service id.
- D. The VC ID on the spoke SDP does not have to be explicitly configured and it will use the service id.

Correct Answer: B

QUESTION 7

A router has two admin groups defined (GREEN=1 and RED=3). An interface is associated to both admin groups. What value will be shown in the Admin Group sub-TLV for this interface?

- A. 0x4
- B. 0x5
- C. 0x10
- D. 0xa

Correct Answer: D

QUESTION 8

What is the source IP address in an OSPF update?

- A. 224.0.0.5
- B. 224.0.0.6
- C. The unicast IP address of the interface the update is being sent on.
- D. The system address of the router

Correct Answer: C

QUESTION 9

Initially, all ports on an Alcatel-Lucent 7750 SR have 10Gbps bandwidth. RSVP configuration limits reservable bandwidth to 30 percent on all interfaces. An LSP is signaled reserving 1 Gbps bandwidth. How much unreserved bandwidth is left on the interface?

- A. 10 Gbps
- B. 7 Gbps
- C. 3 Gbps
- D. 2 Gbps

Correct Answer: D

QUESTION 10

In an IP datagram, which of the following fields identifies the receiving application?

- A. The protocol field of the transport layer header.
- B. The port field of the transport layer header.
- C. The protocol field of the network layer header.
- D. The port field of the network layer address.

Correct Answer: B

QUESTION 11

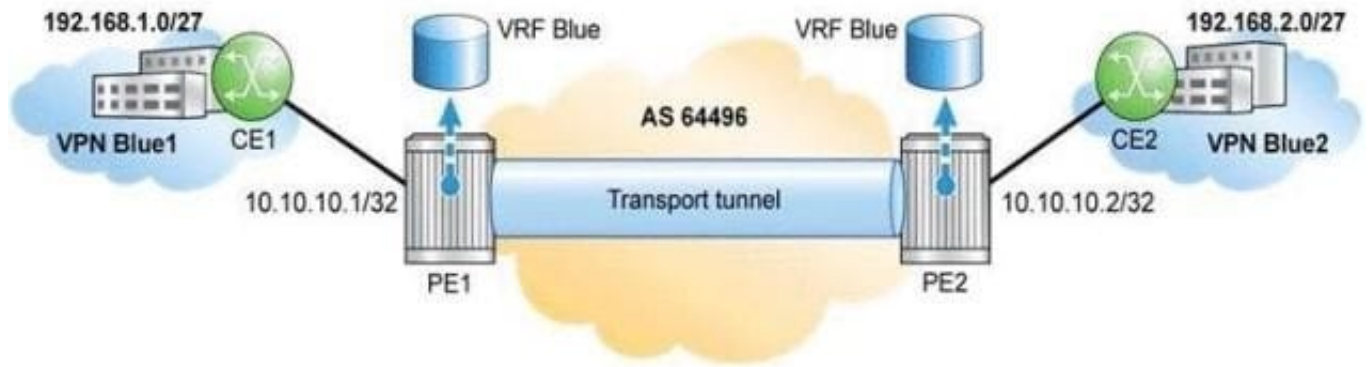
On the Alcatel-Lucent 7750 SR, which one of the following steps is NOT required when enabling an MPBGP session between PE routers in a VPRN?

- A. Configuring an autonomous system number in the global context.
- B. Configuring a BGP group and peer parameters.
- C. Configuring a VPN-IPv4 address family.
- D. Configuring an export policy to advertise routes between PEs.

Correct Answer: D

QUESTION 12

Click on the exhibit button below.



If CE1 and PE1 use BGP to exchange routing information and CE2 and PE2 use static routing to forward traffic to and from the VPRN, which of the following statements is considered TRUE?

- A. An export policy is required on PE1 to advertise routes to CE1.
- B. An export policy is not required on PE2 to advertise routes to CE2.
- C. An export policy is not required to advertise routes between PE routers
- D. All of the above statements are true
- E. All of the above statements are false

Correct Answer: D

QUESTION 13

What causes an adjacency to change from down to two ways?

- A. When a link state update is received in response to a link state request.
- B. When a router receives a Hello packet that contains its own router ID in the neighbor list from a neighbor.
- C. When a router receives a database description packet from a neighbor.
- D. When a link state acknowledgement is received in response to a link state update.

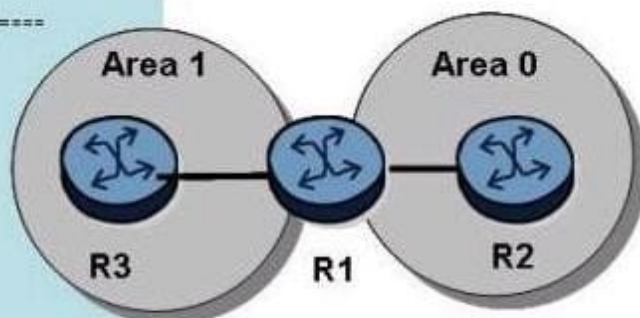
Correct Answer: B

QUESTION 14

Click the exhibit button.

```
*A:R3>config>router>ospf# show router route-table
Route Table (Router: Base)
=====
Dest Prefix          Type  Proto  Age      Pref
  Next Hop[Interface] Metric
0.0.0.0/0            Remote OSPF  00h00m23s  10
  10.1.3.1              101
10.1.3.0/27          Local  Local  05d10h00m  0
  toR1                  0
10.10.10.3/32         Local  Local  0144d08h   0
  system                0
No. of Routes: 3
```

```
*A:R2# show router route-table 192.168.0.0/16 longer
Route Table (Router: Base)
=====
Dest Prefix          Type  Proto  Age      Pref
  Next Hop[Interface] Metric
192.168.1.0/24        Local  Local  01h09m41s  0
  loop1                0
192.168.2.0/24        Local  Local  01h09m41s  0
  loop2                0
192.168.3.0/24        Local  Local  01h09m40s  0
  loop3                0
192.168.4.0/24        Local  Local  01h09m40s  0
  loop4                0
No. of Routes: 4
```



Given the topology and the route-tables shown, which of the following is most likely to be the configuration on router R1?

A. *A:R1>config>router>ospf# info

```
-----
area 0.0.0.0
  interface "toR2"
    interface-type point-to-point
  exit
exit
area 0.0.0.1
  nssa
  exit
  interface "toR3"
    interface-type point-to-point
  exit
exit
-----
```

*A:R1>config>router>ospf#

B. *A:R1>config>router>ospf# info

```
-----
area 0.0.0.0
  area-range 192.168.0.0/16 advertise
  interface "toR2"
    interface-type point-to-point
exit
exit
area 0.0.0.1
  interface "toR3"
    interface-type point-to-point
  exit
exit
-----
```

*A:R1>config>router>ospf#

C. *A:R1>config>router>ospf# info

```
-----  
area 0.0.0.0  
  interface "tcR2"  
    interface-type point-to-point  
  exit  
exit  
area 0.0.0.1  
  area-range 192.168.0.0/16 advertise  
  interface "tcR3"  
    interface-type point-to-point  
  exit  
exit
```

*A:R1>config>router>ospf#

D. *A:R1>config>router>ospf# info

```
-----  
area 0.0.0.0  
  interface "toR2"  
    interface-type point-to-point  
  exit  
exit  
area 0.0.0.1  
  stub  
    no summaries  
  exit  
  interface "toR3"  
    interface-type point-to-point  
  exit  
exit
```

*A:R1>config>router>ospf#

A. Option A

B. Option B

C. Option C

D. Option D

Correct Answer: D

QUESTION 15

Which of the following are characteristics of a SDP? (Choose 2)

- A. SDPs are a logical way to direct traffic from one router to another.
- B. SDPs are a logical way to direct traffic between services.
- C. SDP IDs are locally unique.
- D. SDP IDs must be unique across the network.
- E. SDPs are specific to one service type
- F. SDPs must use MPLS for their encapsulation

Correct Answer: AC

[4A0-C01 PDF Dumps](#)

[4A0-C01 VCE Dumps](#)

[4A0-C01 Braindumps](#)