

# 4A0-106<sup>Q&As</sup>

Alcatel-Lucent Virtual Private Routed Networks

## Pass Alcatel-Lucent 4A0-106 Exam with 100% Guarantee

Free Download Real Questions & Answers **PDF** and **VCE** file from:

<https://www.leads4pass.com/4a0-106.html>

100% Passing Guarantee  
100% Money Back Assurance

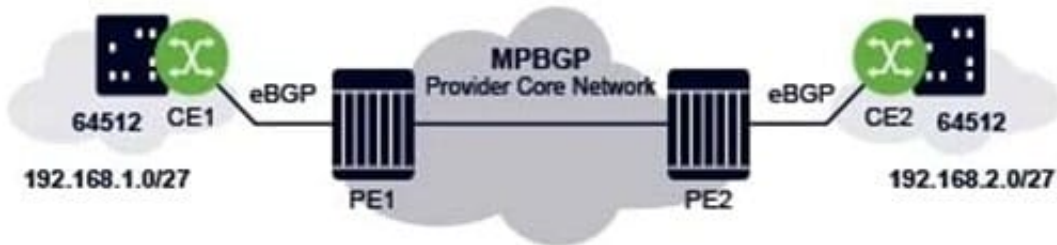
Following Questions and Answers are all new published by Alcatel-Lucent Official Exam Center

- ⚙ **Instant Download** After Purchase
- ⚙ **100% Money Back** Guarantee
- ⚙ **365 Days** Free Update
- ⚙ **800,000+** Satisfied Customers



## QUESTION 1

The CLI command "remove-private" is configured on PE1 to eliminate BGP loops in the VPRN.



CE1# show router bgp routes

BGP Router ID:10.10.10.3		AS:—	Local AS:—
Legend -			
Status codes : u - used, s - suppressed, h - history, d - decayed, * - valid			
l - leaked, x - stale, > - best, b - backup, p - purge			
Origin codes : i - IGP, e - EGP, ? - incomplete			
BGP IPv4 Routes			
Flag	Network Nexthop (Router) As-Path	LocalPref Path-Id	MED Label
u*>i	192.168.2.0/27 10.1.3.1	None None	None -

For the displayed route, what is the value of the AS-Path field?

- A. 64496 64512
- B. 64512
- C. 64496
- D. 64512 64496

Correct Answer: B

## QUESTION 2

A VPLS spoke SDP is terminated on a VPRN service. The remote side of the spoke SDP is operationally "Down" with a flag of "Service MTU Mismatch". Which command can you use on an Alcatel-Lucent 7750 SR to show the signaled operational VC-MTU?

- A. show service id base
- B. show router ldp bindings
- C. show service id sdp detail

D. show service id vc-mtu

Correct Answer: B

## QUESTION 3

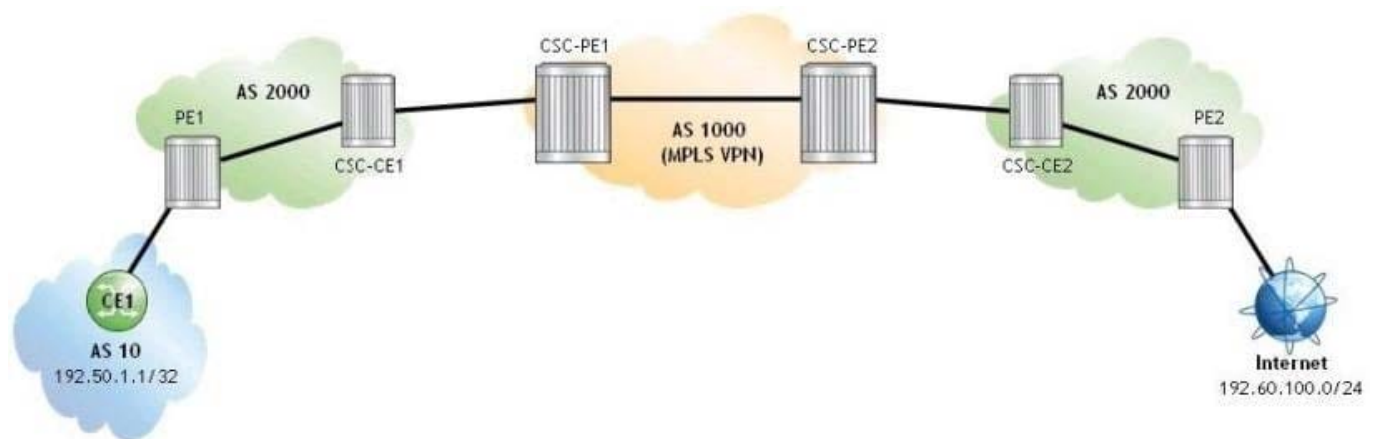
Which of the following about VPRN Outbound Route Filtering (ORF) is FALSE?

- A. Resources consumed at the sender and receiver PEs can be reduced by using BGP ORF.
- B. BGP ORF allows a receiving PE to filter out unnecessary inbound routes.
- C. A PE indicates its ORF capabilities to its neighbor PE in a BGP Open message.
- D. BGP ORF is most effective when a large number of routes is being exchanged between two peers, and most routes are filtered out on arrival.

Correct Answer: B

## QUESTION 4

Click the exhibit.



A Carrier Supporting Carrier (CSC) VPRN is configured on an Alcatel-Lucent 7750 SR for a customer carrier who is an Internet Service Provider (ISP). Which of the following configuration steps is NOT required?

- A. Configuring labeled eBGP sessions between CSC-CE and CSC-PE routers.
- B. Configuring a policy on each CSC-CE to advertise local PE addresses to the network provider.
- C. Configuring labeled iBGP sessions between PEs residing in different customer carrier sites.
- D. Advertising the received system addresses of remote PEs using either iBGP or IGP/LDP within each customer carrier site.

Correct Answer: C

## QUESTION 5

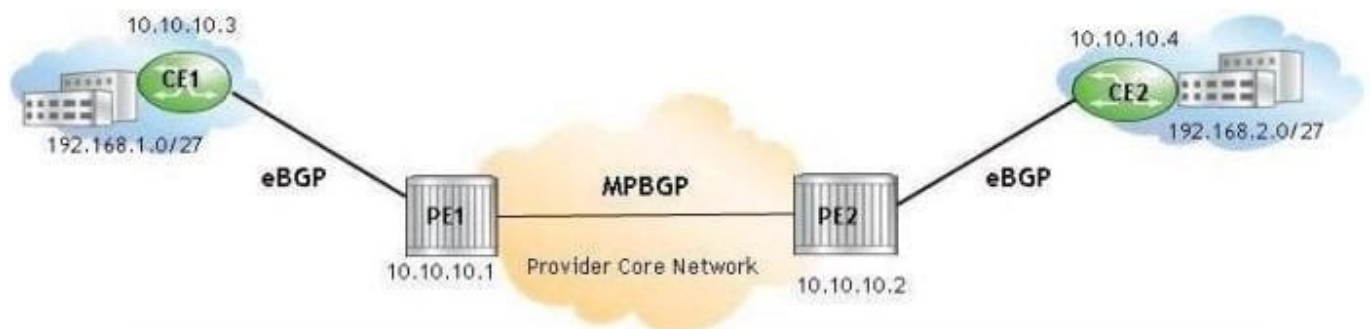
What are the main functions of a Layer 3 VPN? (Choose three).

- A. Distributing customer routing information between sites
- B. Forwarding customer data packets
- C. Providing an integrated billing solution
- D. Maintaining separation between distinct customer networks
- E. Allowing the implementation of Layer 3 devices in the provider core

Correct Answer: ABD

## QUESTION 6

Click the exhibit.



```
*A:PE2# show router bgp neighbor 10.10.10.1 received-routes vpn-ipv4
=====
BGP Router ID:10.10.10.2      AS:64496      Local AS:64496
=====
Legend -
Status codes : u - used, s - suppressed, h - history, d - decayed, * - valid
Origin codes : i - IGP, e - EGP, ? - incomplete, > - best
=====
BGP VPN-IPv4 Routes
=====
Flag  Network                               LocalPref  MED
NextHop
As-Path
-----
u*>i  64496:1:10.1.3.0/27                     100        None
      10.10.10.1
      No As-Path
      131070
u*>?  64496:1:10.10.10.3/32                  100        None
      10.10.10.1
      No As-Path
      131070
u*>?  64496:1:192.168.1.0/27                 100        None
      10.10.10.1
      No As-Path
      131070
=====
Routes : 3
```

Which of the following best describes the output?

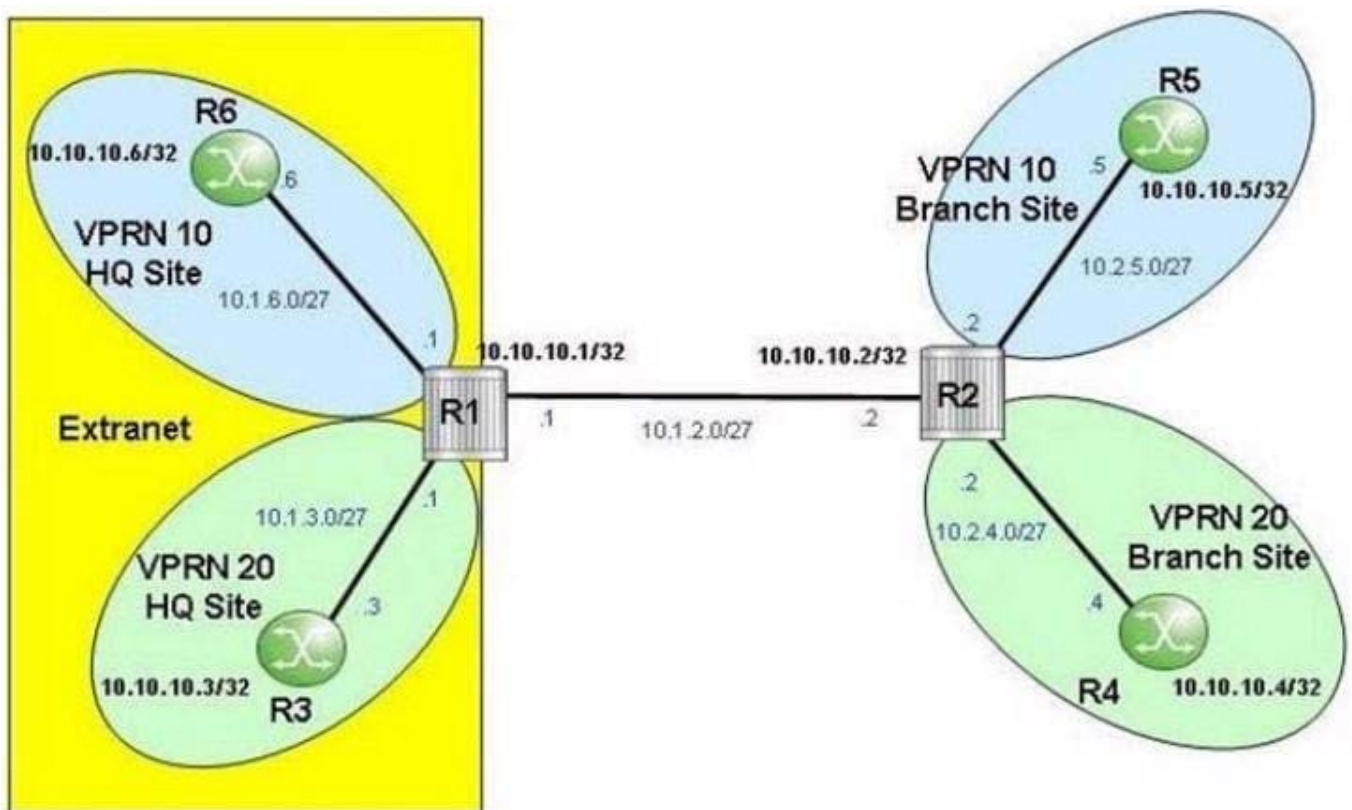
- A. The AS-Path is not present because a policy is configured on PE2 to set it to null.

- B. The AS-Path is not present because a policy is configured on CE1 to set it to null.
- C. The AS-Path is not present because a policy is configured on PE1 to set it to null.
- D. The AS-Path is not present because VPN-IPv4 routes do not propagate the IPv4 AS-Path BGP attribute.

Correct Answer: C

## QUESTION 7

Click the exhibit.



```
community "Blue-Only" members "target:65100:1"
community "Green-Only" members "target:65100:2"
community "Blue-Green" members "target:65100:3"
community "Extranet-VPN-Blue" members "target:65100:1" "target:65100:3"
community "Extranet-VPN-Green" members "target:65100:2" "target:65100:3"
```

For the extranet VPRN and community lists shown, which of the following communities will be included in the export policy applied to VPRN 20 on router R2?

- A. "Blue-Only"
- B. "Blue-Only" and "Blue-Green"
- C. "Green-Only"



D. "Extranet-VPN-Green"

E. "Blue-Green"

Correct Answer: C

---

#### QUESTION 8

In a VPRN, what type of logical topology is required for the BGP sessions configured in the provider core?

```
policy-statement "mp-bgp-to-rip"  
  entry 10  
    from  
      protocol rip  
    exit  
  to  
    protocol bgp-vpn  
  exit  
  action accept  
  exit  
exit  
exit
```

A. Full mesh between all CE, PE and P devices

B. Full mesh between PE and P devices

C. Full mesh of P devices

D. Full mesh of PE devices

E. Full mesh between PE and CE devices

Correct Answer: D

---

#### QUESTION 9

On an Alcatel-Lucent 7750 SR, which CLI command displays the Route Target(s) associated to a prefix?

- A. Show router bgp routes
- B. Show router route-table summary
- C. Show router bgp routes vpn-ipv4 detail
- D. Show router route-table

Correct Answer: C

---

#### QUESTION 10

In inter-AS model C VPRN, which of the following about the command "advertise-label ipv4" is TRUE?

- A. This command is required on all PE routers to distribute labeled IPv4 routes directly to PEs in remote AS.
- B. This command is required on the ASBRs to exchange labeled IPv4 routes between the ASs.
- C. This command is required on the route reflectors to exchange customer routes between ASs as labeled IPv4 routes.
- D. This command is required on all PE routers to distribute labeled IPv4 routes to connected CEs.

Correct Answer: B

---

#### QUESTION 11

Which of the following protocols does the Alcatel-Lucent 7750 SR support to signal VPRN service labels?

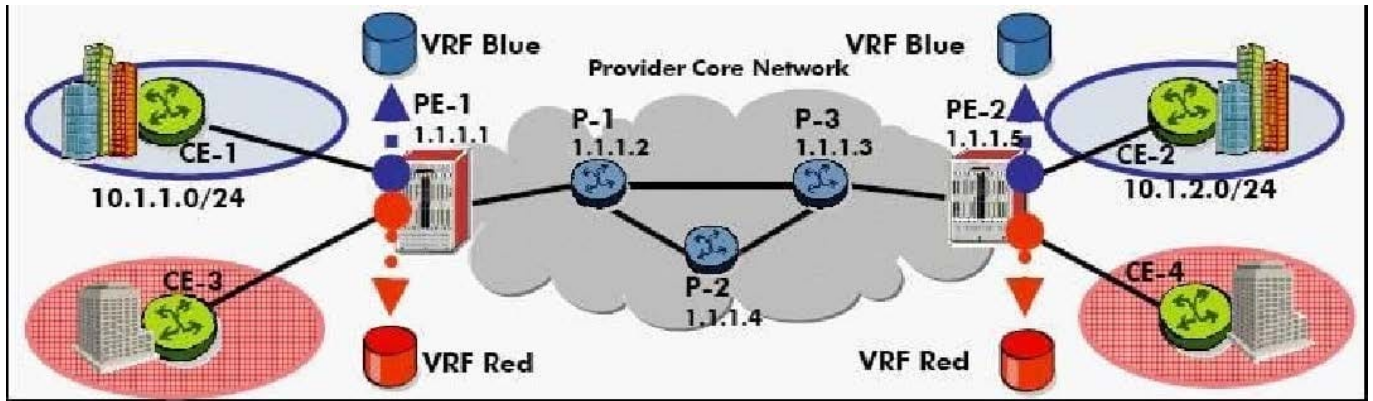
- A. Targeted-LDP
- B. BGP
- C. MP-BGP
- D. RSVP-TE

Correct Answer: C

---

#### QUESTION 12

When configuring the CE with the selected CE-PE routing protocol on an Alcatel-Lucent 7750 SR, which of the following statements is true? (Choose three.)



```

PE-1>config>service# VPRN 20 customer 101 create
PE-1>config>service>VPRN$ description "VPRN Service"
PE-1>config>service>VPRN$ route-distinguisher 65100:101
PE-1>config>service>VPRN$ vrf-target target:65100:101
PE-1>config>service>VPRN$ auto-bind ldp
PE-1>config>service>VPRN$ router-id 1.1.1.1
PE-1>config>service>VPRN$ exit
PE-1>config>service#
  
```

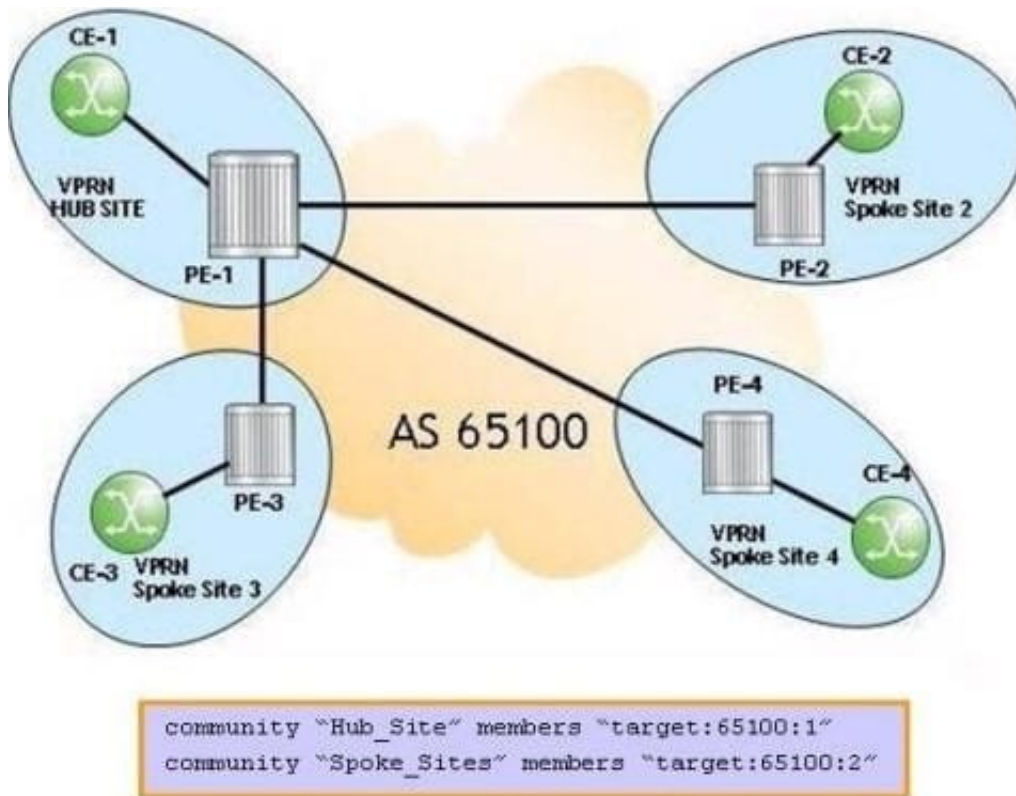
- A. The protocol is configured under the config>service context
- B. The protocol is configured under the global router context
- C. The interface leading to the PE is defined as a protocol neighbor
- D. The routing protocol used must be the same as the routing protocol used at other CE-PE locations in the same VPN.
- E. A routing policy may or may not be required depending on the routing requirements and routing protocol

Correct Answer: BCE

### QUESTION 13

Click the exhibit.





For the PE hub and spoke VPRN, on which PE(s) should the VPRN service command "vrf-target export target:65100:1 import target:65100:2" be configured?

- A. PE1
- B. PE2, PE3 and PE4
- C. PE1, PE2, PE3 and PE4
- D. This command is not required for the configuration of this PE hub and spoke VPRN.

Correct Answer: A

#### QUESTION 14

Which method does the Alcatel-Lucent 7750 SR use for the allocation of VPRN labels?

- A. One label per route
- B. One label per next-hop
- C. One label per VRF
- D. One label per prefix
- E. One label per tunnel

Correct Answer: C

## QUESTION 15

Which of the following about BGP loops in a VPRN environment is FALSE?

- A. Traditional BGP loop detection mechanisms may detect a loop in the VPRN scenario, which in fact is not present.
- B. The Alcatel-Lucent 7750 SR accepts routes containing AS\_PATH loops by default.
- C. When the CLI command "config>router>bgp# loop-detect discard-route" is used, the Alcatel-Lucent 7750 SR sends a notification to the remote peer and drops the BGP session.
- D. In VPRN implementations where the CE-PE protocol is BGP, it is possible for separate sites of the same customer to use the same BGP autonomous system number.

Correct Answer: C

[Latest 4A0-106 Dumps](#)

[4A0-106 Practice Test](#)

[4A0-106 Braindumps](#)