

## 4A0-105<sup>Q&As</sup>

Alcatel-Lucent Virtual Private LAN Services

### Pass Alcatel-Lucent 4A0-105 Exam with 100% Guarantee

Free Download Real Questions & Answers **PDF** and **VCE** file from:

<https://www.leads4pass.com/4a0-105.html>

100% Passing Guarantee  
100% Money Back Assurance

Following Questions and Answers are all new published by Alcatel-Lucent Official Exam Center

- ⚙️ **Instant Download** After Purchase
- ⚙️ **100% Money Back** Guarantee
- ⚙️ **365 Days** Free Update
- ⚙️ **800,000+** Satisfied Customers



**QUESTION 1**

Click on the exhibit below.

```
A:PE5# show service service-using
=====
Services
=====
ServiceId   Type      Adm   Opr      CustomerId  Last Mgmt Change
-----
10          VPLS     Up    Up        1            09/12/2006 18:03:34
20          VPLS     Up    Up        1            09/11/2006 11:14:45
100         VPLS     Up    Up        1            09/12/2006 17:51:07
-----
Matching Services : 3
-----
```

Management VPLS 100 has been created for redundant spoke-SDP connections. User VPLSs 10 and 20 are using the same spoke-SDPs that are being managed by VPLS 100. Unexpected behavior has been reported. Based on the following output, what is the most likely reason for the unexpected behavior?

- A. VPLS 100 was not actually configured as a management VPLS.
- B. VPLS 10 and VPLS 20 are not actually configured as a user VPLS.
- C. VPLS 10 and VPLS 20 are not using the same spoke-sdps that the management VPLS is using.
- D. Based on the output there is now way of telling if there is a problem with the configuration.

Correct Answer: A

**QUESTION 2**

Click on the exhibit below.

```
A:PE1>config>services# show service id 1500 stp
=====
Inherited Stp State (from mVPLS), Service 1500
=====
Sap/Spoke Id      Oper-   Prune-  Port-   Mngd by  Mngd by  Mngd by
                  State  State  State   Service  Sap/spoke MSTI
-----
1/1/1:1500        Up      -       Forward 1        1/1/1:0  CIST
=====
```

Based on the output below which of the following statements is true? (Choose 2)

- A. VPLS1500 is a user VPLS.
- B. VPLS 1500 is management VPLS.

- C. Spanning tree BPDUs for the management VPLS are tagged.
- D. Spanning tree BPDUs for the management VPLS are untagged.

Correct Answer: AD

### QUESTION 3

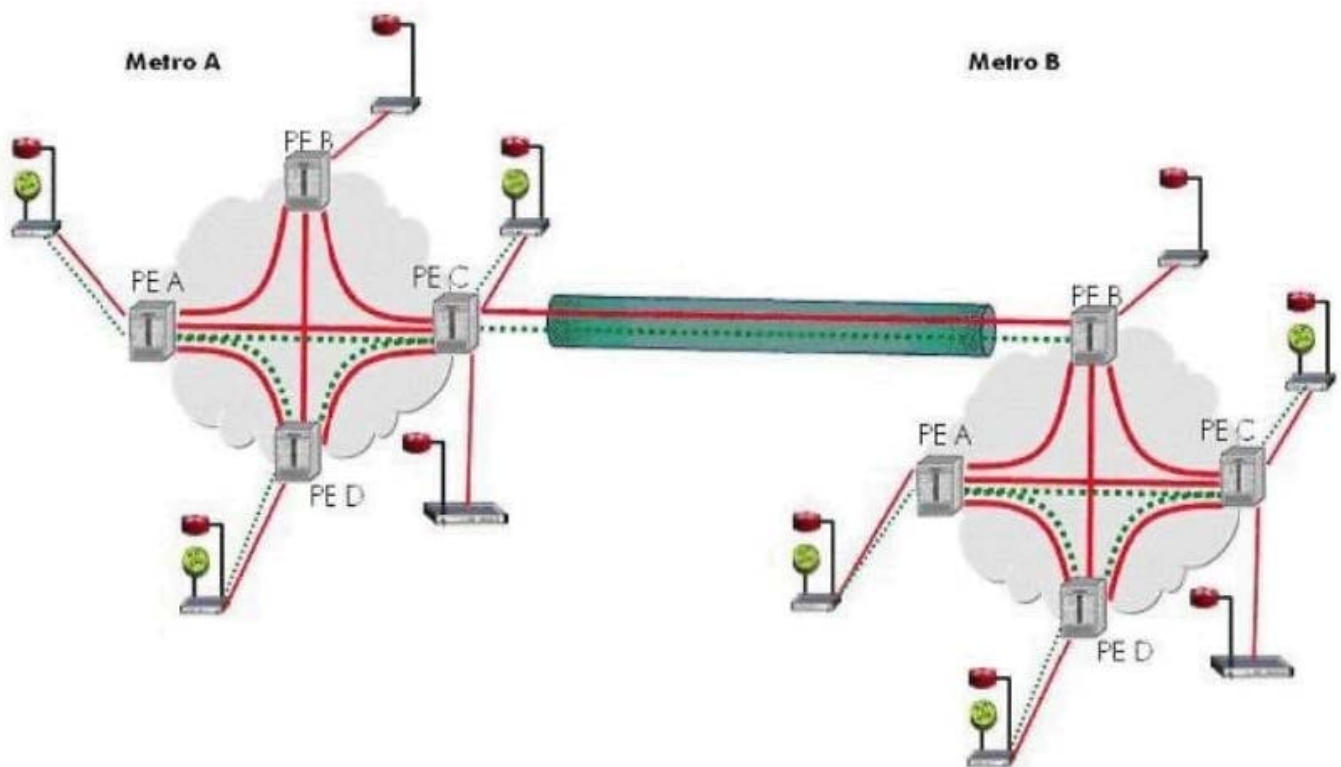
Assuming TLDP and RSVP are both being used in an MPLS network core which of the following statements is true?

- A. TLDP is used to create the inner label, RSVP is used to create the outer label.
- B. TLDP is used to create the outer label, RSVP is used to create the inner label.
- C. TLDP and RSVP cannot be used in the same network since they both provide the same label.
- D. When RSVP is used, TLDP must be disabled and static vc labels should be used.
- E. TLDP and RSVP can be used to create either labels based on how they are configured.

Correct Answer: A

### QUESTION 4

Click on the exhibit below.



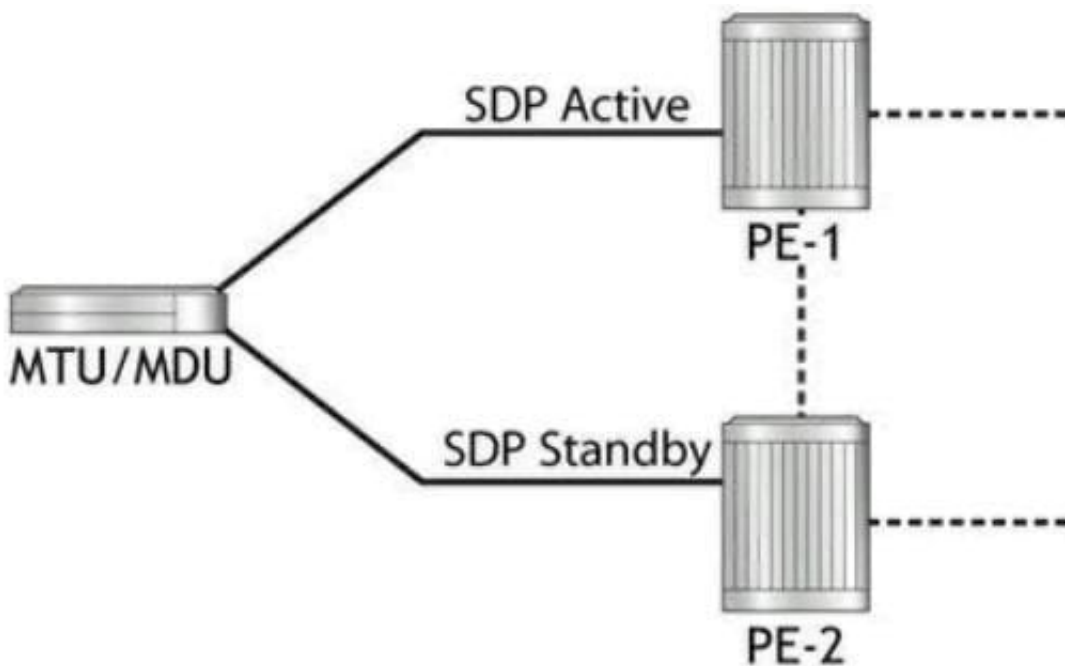
A new site is added to PE-D of Metro B. Which of the following statement below is true?

- A. If a spoke-SDP is configured between the new site and PE-D no further SDPs will be required.
- B. If a mesh- SDP is configured between the new site and PE-D no further SDPs will be required.
- C. A mesh- SDP must be configured between the new site and all other PEs within Metro B.
- D. A spoke- SDP must be configured between the new site and all other PEs within Metro B.

Correct Answer: A

#### QUESTION 5

Click on the exhibit below.



Assume there are two VPLS services configured on the MDU. How could load-balancing be achieved when using Active/Standby pseudowires?

- A. This cannot be done.
- B. Each VPLS will use the same pair of SDP's with the same endpoint configured with the option "loadbalancing 2".
- C. Each VPLS will need their own pair of spoke-SDP's configured. The spoke-sdp's that are to be active should be configured with the option "precedence primary".
- D. Under the end-point configuration, enable load-balancing 2 and the MDU will load balance automatically.

Correct Answer: C

**QUESTION 6**

Click on the exhibit below.

```
A:PE-Z>config>service# show service id 9000 base
=====
Service Basic Information
=====
Service Id       : 9000                Vpn Id           : 0
Service Type    : VPLS
Customer Id     : 100
Last Status Change: 02/12/2007 13:17:11
Last Mgmt Change  : 02/12/2007 13:17:11
Admin State     : Up                  Oper State       : Up
MTU             : 1514                Def. Mesh VC Id  : 1000
SAP Count       : 0                   SDP Bind Count   : 1
Send Flush on Fail: Disabled

-----
Service Access & Destination Points
-----
Identifier                Type      AdmMTU  OprMTU  Adm    Opr
-----
=====
```

Based on the following output what will the vc-id be of any mesh-sdp bound to this service?

- A. 9000
- B. 1514
- C. 1000
- D. 100

Correct Answer: C

**QUESTION 7**

What type of SDP cannot be configured in an I-VPLS?

- A. Mesh-sdp
- B. Spoke-sdp
- C. MPLS
- D. GRE

Correct Answer: A

**QUESTION 8**

During the process of troubleshooting a VPLS problem the "oam mac-purge" command with "register" option was used to purge a MAC address from the FDB.

Which of the following statements is true?

- A. Relearning of the MAC address that was purged can only be done once customer traffic resumes.
- B. Relearning of the MAC address that was purged can only be done with the "oam mac- populate" command.
- C. Customer traffic destined to the MAC address that was purged will be dropped until the MAC address is relearned with the "oam mac-populate" command.
- D. Relearning of the MAC address that was purged can only be done with the "oam mac- register" command.

Correct Answer: B

---

## QUESTION 9

When ports configured with IEEE 802.3ah EFM are operationally down, what must the device do before declaring the ports are up?

- A. The device will try to force the other side up using the evaluating flag in the PDU.
- B. The device will wait for the transmit-interval of 5 before trying to rediscover the neighbor.
- C. The device will detect the port change and will wait for normal operation mode.
- D. The device will detect the port change and revert to discovery mode.

Correct Answer: D

---

## QUESTION 10

The following question relates to this command syntax: "config>service# vpls 9000 customer 6 create". Which of the following statements are correct? (Choose 2)

- A. The customer-id in this command is 9000.
- B. The service-id in this command is 9000.
- C. This value 9000 should be unique across the network as a best practice.
- D. The vc-id will be 6 for the service by default.
- E. The egress vc-label will be 9000.

Correct Answer: BC

---

### QUESTION 11

Which of the following statements regarding unicast and multicast frames is true for a traditional layer 2 switch? (Choose 2)

- A. Multicast frames only forward out ports that have a known receiver.
- B. Unicast frames only forward out ports that have a known receiver.
- C. If the FDB is empty, unicast and multicast frames are treated equally.
- D. If the FDB has an entry for the unicast frame, both unicast and multicast are treated equally.

Correct Answer: BC

### QUESTION 12

Click on the exhibit below.

```
A:PE-B# show service id 333 stp
=====
Stp info, Service 333
=====
Bridge Id       : 80:00.00:16:4d:1c:e9:b8   Top. Change Count : 6
Root Bridge    : 80:00.00:03:fa:40:a2:9c   Stp Oper State    : Up
Primary Bridge : This Bridge              Topology Change   : Inactive
Mode           : Rstp                     Last Top. Change  : 0d 00:00:58
Vcp Active Prot. : Rstp
Root Port      : 2048                      External RPC      : 10
=====
Stp port info
=====
Sap/Sdp Id      Oper-  Port-  Port-  Port-  Oper-  Link-  Active
                State Role   State Num   Edge  Type  Prot.
-----
1/1/1           Up     Root   Forward 2048  False Pt-pt Rstp
=====
```

Based on the output below which of the following statements is true?

- A. This Bridge is furthest from the Root Bridge within the VPLS mesh.
- B. This Bridge is the Root Bridge.
- C. SAP 1/1/1 is an Edge Port.
- D. This Bridge is closest to the Root Bridge within the VPLS mesh.

Correct Answer: D

### QUESTION 13

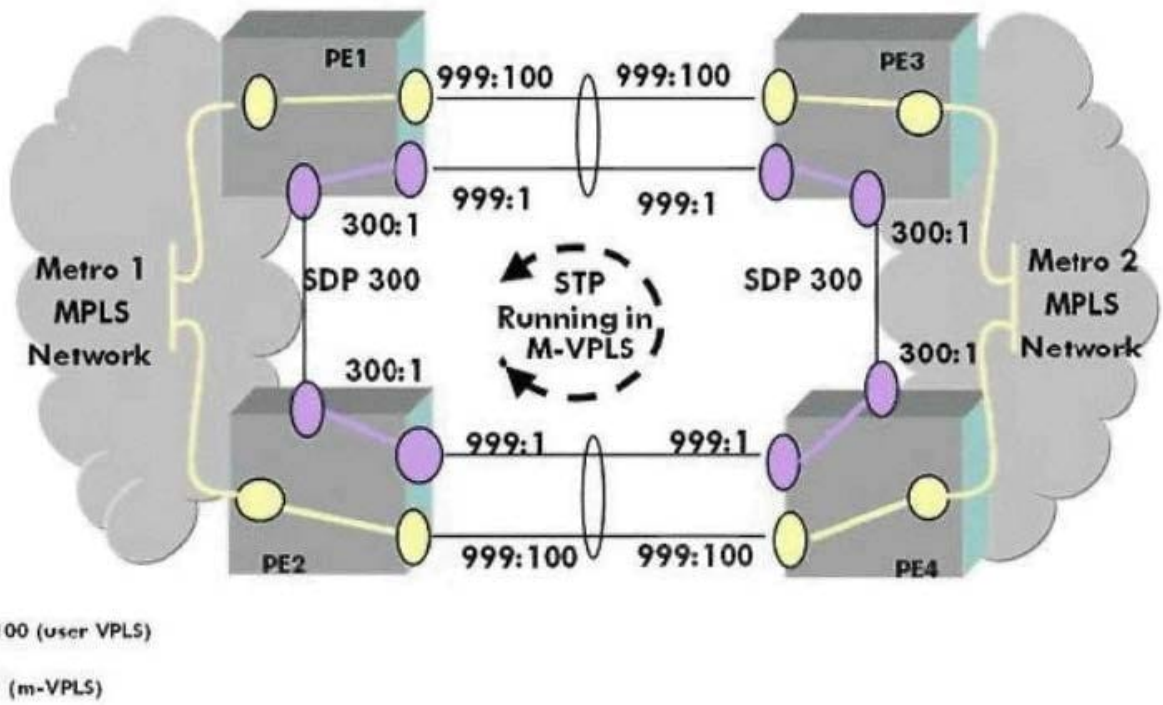
Consider a large metro-to-metro VPLS network interconnected with a mesh of mesh-SDPs. Which of the following statements does NOT apply to this situation?

- A. Bandwidth and replication inefficiency can occur on inter-metro links if there is a lot of multicast traffic
- B. The number of control sessions grows exponentially in a fully meshed network.
- C. Spanning-tree is required to prevent loops when using mesh SDPs on the inter-metro links.
- D. Network touches increase with each node added to the mesh.

Correct Answer: C

**QUESTION 14**

Click on the exhibit below.



Study the diagram shown. What consideration should be given to the transport tunnel of SDP 300?

- A. The SDP must be configured to use GRE encapsulation.
- B. The SDP must follow the same path as the user's SDP.
- C. The SDP should be configured to use an RSVP signaled transport with fast reroute.
- D. The SDP must be the same as the user's SDP.

Correct Answer: C

**QUESTION 15**



When spanning tree is enabled within a VPLS service and the STP mode is 802.1 D 2004 what happens if a PVST BPDU is received on a SAP?

- A. Spanning tree will be disabled on the SAP that the PVST BPDU was received on.
- B. The SAP that the PVST BPDU was received on will be disabled to prevent loops.
- C. The spanning tree encapsulation will be dynamically changed to PVST on the SAP the PVST BPDU was received on.
- D. The PVST BPDU will be ignored and 802.1D 2004 BPDUs will continue to be transmitted on the SAP.

Correct Answer: C

[Latest 4A0-105 Dumps](#)

[4A0-105 PDF Dumps](#)

[4A0-105 Study Guide](#)