

# 4A0-104<sup>Q&As</sup>

Alcatel-Lucent Services Architecture

## Pass Alcatel-Lucent 4A0-104 Exam with 100% Guarantee

Free Download Real Questions & Answers **PDF** and **VCE** file from:

<https://www.leads4pass.com/4a0-104.html>

100% Passing Guarantee  
100% Money Back Assurance

Following Questions and Answers are all new published by Alcatel-Lucent Official Exam Center

- ⚙ **Instant Download** After Purchase
- ⚙ **100% Money Back** Guarantee
- ⚙ **365 Days** Free Update
- ⚙ **800,000+** Satisfied Customers



## QUESTION 1

E-pipe services do not consume any MAC resources because MAC learning is disabled.

- A. TRUE
- B. FALSE

Correct Answer: A

---

## QUESTION 2

Which of the following statements is FALSE regarding 6VPE?

- A. 6VPE is a tunneling technology that makes use of MPLS tunnels to transport IPv6 information over an IPv4 MPLS infrastructure.
- B. Customers connected to 6VPE could run native IPv6 or IPv4.
- C. On the PE router, the next hop for a VPN IPv6 address is an IPv6 address, regardless of the nature of the network between the PEs.
- D. 6VPE requires an IPv6-aware MPLS core.
- E. Both C and D are false.
- F. All of the above statements are true.

Correct Answer: D

---

## QUESTION 3

What happens when a packet without a VLAN tag is received on a SAP provisioned with null encapsulation while an SDP vc-type is provisioned as vlan?

- A. The frame is dropped.
- B. The service ID is added as the VLAN tag.
- C. A VLAN tag of 0 is added as the provider VLAN tag
- D. The frame is forwarded with no VLAN tag

Correct Answer: C

---

## QUESTION 4

Which utility on the Nokia 7750 SR can be used to investigate an MPLS path?

- A. lsp-trace
- B. ldp-trace
- C. sdp-ping
- D. svc-ping
- E. Ping

Correct Answer: A

## QUESTION 5

Click the exhibit.

```
R1# show router 100 fib 1
```

FIB Display		
Prefix		Protocol
NextHop		
10.1.5.0/24		LOCAL
10.1.5.0 (R1-R5)		
10.6.4.0/24		BGP_VPN
10.10.10.4 (VPRN Label:131065 Transport:LDP)		
10.10.10.5/32		BGP
10.1.5.5 Indirect (R1-R5)		
10.10.10.6/32		BGP_VPN
10.10.10.4 (VPRN Label:131065 Transport:LDP)		
192.168.10.0/24		BGP
10.1.5.5 Indirect (R1-R5)		
192.168.20.0/24		BGP_VPN
10.10.10.4 (VPRN Label:131065 Transport:LDP)		
Total Entries : 6		

Based on the output from PE router R1 about VPRN 100, by which protocol was 192.168.10.0/24 learned?

- A. BGP
- B. MP-BGP
- C. LDP
- D. MPLS

Correct Answer: B

**QUESTION 6**

On which component is vc-type configured to create an E-pipe service that preserves the VLAN tag during transport?

- A. The SDP itself (outside of the E-pipe context).
- B. The SAP in the E-pipe.
- C. The mesh SDP in the E-pipe.
- D. The spoke SDP in the E-pipe.

Correct Answer: D

---

**QUESTION 7**

What is the minimum Ethernet physical network MTU required for a Layer 2 service on a GRE encapsulated SDP with a service MTU of 1514?

- A. 1514
- B. 1526
- C. 1548
- D. 1556
- E. 1536

Correct Answer: D

---

**QUESTION 8**

A mesh SDP is used to create an Fpipe service.

- A. TRUE
- B. FALSE

Correct Answer: B

---

**QUESTION 9**

Which of the following statements about mirror slicing on the Nokia 7750 SR is TRUE?

- A. Mirror slicing is used to logically separate a port that is being monitored.
- B. Mirror slicing is configured in the mirror destination context.
- C. When mirror slicing is enabled, only the protocol headers of the traffic are replicated.

D. A mirror can be configured with multiple slices.

Correct Answer: B

---

## QUESTION 10

Which of the following statements best describes how an FDB is populated with MAC addresses in a VPLS service?

- A. A VPLS service does not use an FDB.
- B. The router reads the destination MAC address of packets passing through the service.
- C. The router reads the source MAC address of packets passing through the service.
- D. The router uses reverse ARP (RARP) to resolve the MAC addresses for unknown destinations.
- E. The router is programmed with MAC addresses by the network administrator.

Correct Answer: C

---

## QUESTION 11

Which of the following best describes a distributed E-pipe Service?

- A. An E-pipe that has 2 or more SDPs configured.
- B. An E-pipe that has 3 or more SAPs configured.
- C. An E-pipe that has 2 SAPs on the same node but no SDPs configured
- D. An E-pipe that is configured between two nodes, each having 1 SAP and 1 SDP configured.

Correct Answer: D

---

## QUESTION 12

Which of the following about F-pipes is FALSE?

- A. F-pipes use SAPs in the form of port: DLCI (e.g. 1/2/3:65).
- B. To the customer, the PE appears as a native Frame Relay UNI (User Network Interface).
- C. Multiple Frame Relay circuits can be mapped to a single F-pipe service on the Nokia 7750 SR.
- D. The MPLS control word is required because the Frame Relay header is not encapsulated in the frame.

Correct Answer: C

---

## QUESTION 13

On a Nokia 7750 SR, why must the MTU be explicitly set when configuring an IES spoke termination to a VPLS?

- A. By default, a VPLS signals an MTU based on the network port.
- B. By default, an IES sets its ip-mtu to the VC MTU of the VPLS.
- C. By default, an IES uses an MTU value based on its SAP.
- D. By default, an IES uses an MTU based on the network port.

Correct Answer: D

## QUESTION 14

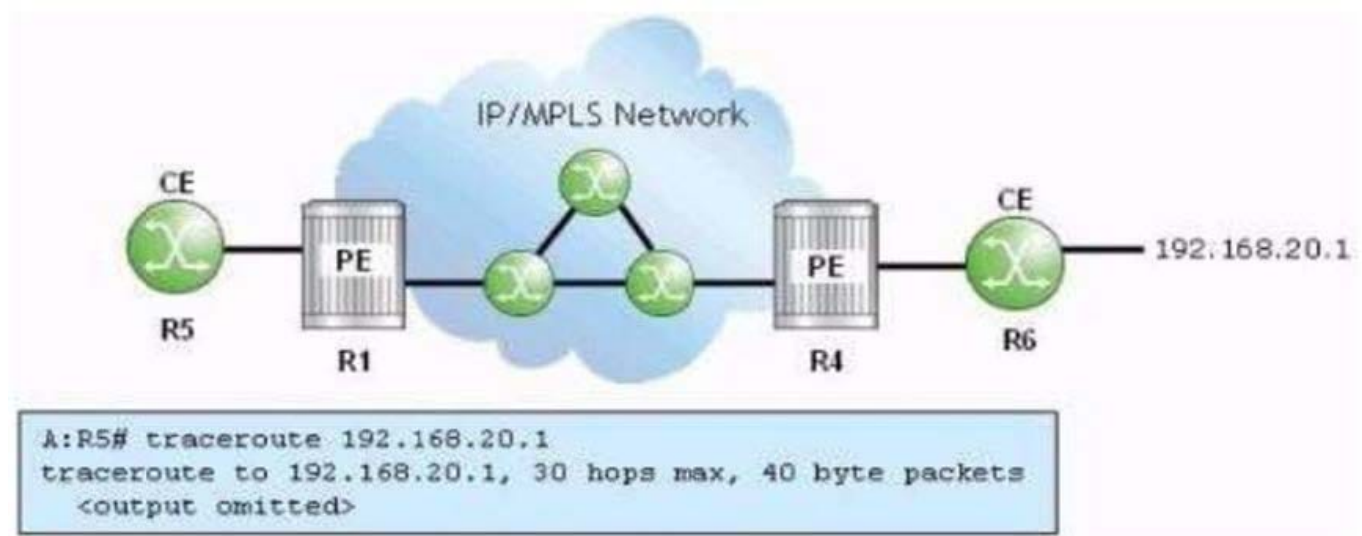
Which of the following about VPRN route targets is FALSE?

- A. A route target is used to distinguish to which VRF table a prefix belongs.
- B. A route target appended to an IPv4 prefix produces a VPN-IPv4 prefix.
- C. Multiple route targets can be part of a single MP-BGP update.
- D. Route targets must be configured for VPRNs.

Correct Answer: B

## QUESTION 15

Click the exhibit.



R1 and R4 are providing a VPRN for the CEs. Which of the following about the traceroute run on router R5 is TRUE?

- A. The traceroute will only show one hop: R5-R6.

- B. The traceroute will only show 2 hops; R5-R1 and R4-R6.
- C. The traceroute will only show 3 hops: R5-R1, R1-R4 and R4-R6.
- D. The traceroute will show one hop for each router in the provider core and one for each CE-PE hop.

Correct Answer: C

[Latest 4A0-104 Dumps](#)

[4A0-104 VCE Dumps](#)

[4A0-104 Study Guide](#)