

4A0-103^{Q&As}

Alcatel-Lucent Multiprotocol Label Switching

Pass Alcatel-Lucent 4A0-103 Exam with 100% Guarantee

Free Download Real Questions & Answers **PDF** and **VCE** file from:

<https://www.leads4pass.com/4a0-103.html>

100% Passing Guarantee
100% Money Back Assurance

Following Questions and Answers are all new published by Alcatel-Lucent Official Exam Center

- ⚙ **Instant Download** After Purchase
- ⚙ **100% Money Back** Guarantee
- ⚙ **365 Days** Free Update
- ⚙ **800,000+** Satisfied Customers



QUESTION 1

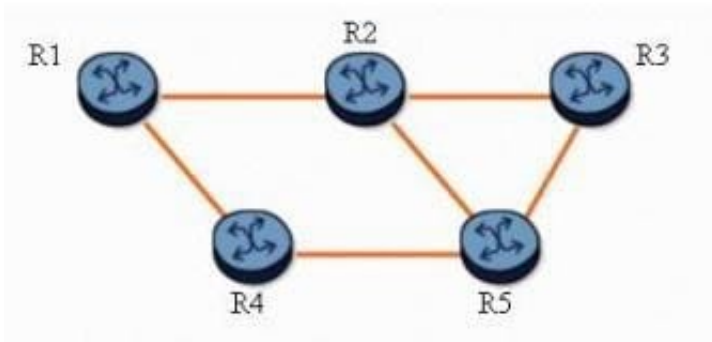
Which of the following about Fast Reroute node protection tunnels is FALSE?

- A. Node protection tunnels detour around a failed next downstream router.
- B. Node protection tunnels can only be requested for a primary LSP path.
- C. Node protection tunnels are only used by one-to-one Fast Reroute.
- D. Link protection tunnels are established if a router is unable to establish node protection tunnels.

Correct Answer: C

QUESTION 2

Click on the exhibit button below.



With fast reroute enabled, and given the following:

Two protected LSPs with the path R1-R2-R3

Both LSPs enable facility bypass and link protection.

When router R1 is the PLR, which router becomes the MP?

- A. Router R1
- B. Router R2
- C. Router R3
- D. Router R4
- E. Router R5

Correct Answer: B

QUESTION 3

Click on the exhibit.

```
*A:SRC_R3# oam lsp-ping prefix 192.10.1.2/32
LSP-PING 192.10.1.2/32: 80 bytes MPLS payload
Seq=1, send from intf toR1, reply from 10.10.10.2
    udp-data-len=32 ttl=255 rtt=2.45ms rc=3 (EgressRtr)

---- LSP 192.10.1.2/32 PING Statistics ----
1 packets sent, 1 packets received, 0.00% packet loss
round-trip min = 2.45ms, avg = 2.45ms, max = 2.45ms, stddev = 0.000ms
*A:SRC_R3#
```

Which of the following is FALSE?

- A. The router can reach prefix 192.10.1.2/32 through a RSVP-TE tunnel.
- B. The router can reach prefix 192.10.1.2/32 through an LDP tunnel.
- C. The router 10.10.10.2 is the egress router of the prefix 192.10.1.2/32.
- D. The lsp-ping tool is used to perform a unidirectional LSP test.

Correct Answer: A

QUESTION 4

Which of the following statements regarding the MPLS SWAP label operation is true?

- A. The inner label will be exchanged with the MPLS outer label.
- B. The inner label will be exchanged for a new label.
- C. The outer label will be exchanged for a new label.
- D. All labels will be exchanged for one new label.
- E. All labels will be exchanged for an equal number of new labels.

Correct Answer: C

QUESTION 5

Click on the exhibit.

```
*A:SRC_R3# oam lsp-ping "lsp-toR2"
LSP-PING lsp-toR2: 92 bytes MPLS payload
Seq=1, send from intf toR1, reply from 10.10.10.2
  udp-data-len=32 ttl=255 rtt=0.000ms rc=3 (EgressRtr)

---- LSP lsp-toR2 PING Statistics ----
1 packets sent, 1 packets received, 0.00% packet loss
round-trip min = 0.000ms, avg = 0.000ms, max = 0.000ms, stddev = 0.000ms
*A:SRC_R3#
```

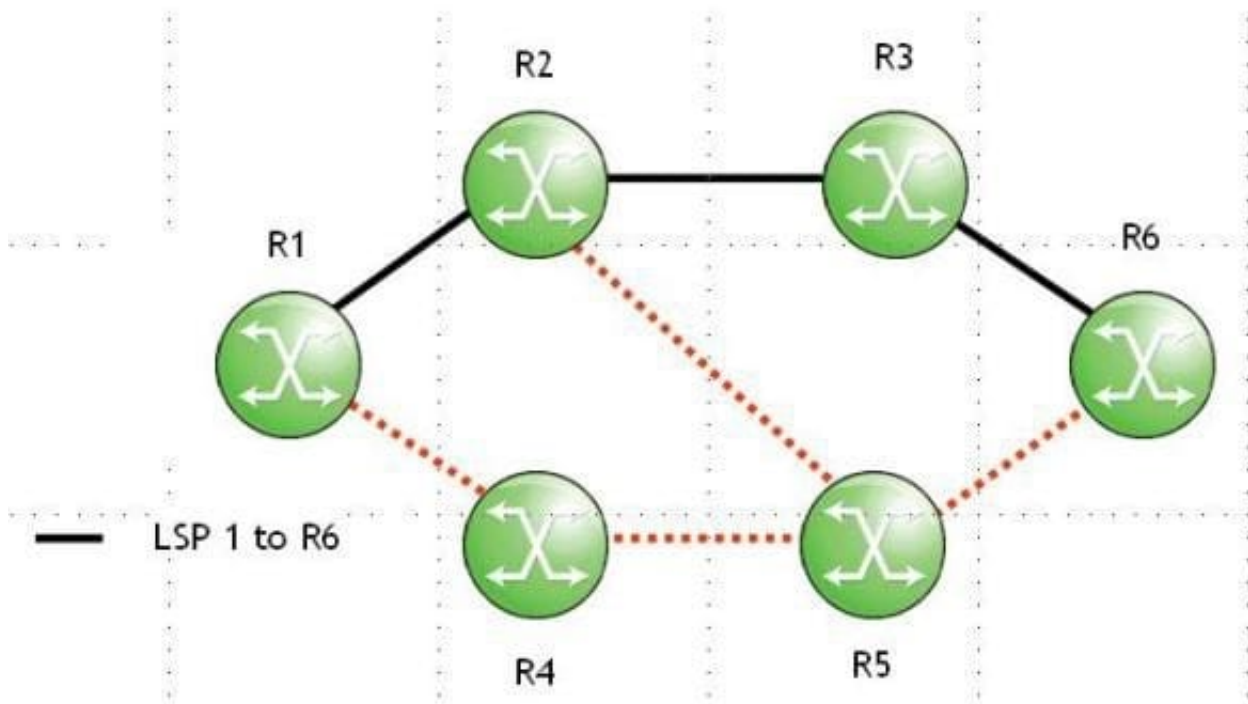
Which of the following is FALSE?

- A. The lsp-ping tool is used to perform a unidirectional LSP test.
- B. The router 10.10.10.2 is the egress router of the LSP.
- C. The router can reach the far-end of the LSP through an RSVP-TE tunnel.
- D. The router can reach the far-end of the LSP through an LDP tunnel.

Correct Answer: D

QUESTION 6

Click on the exhibit.



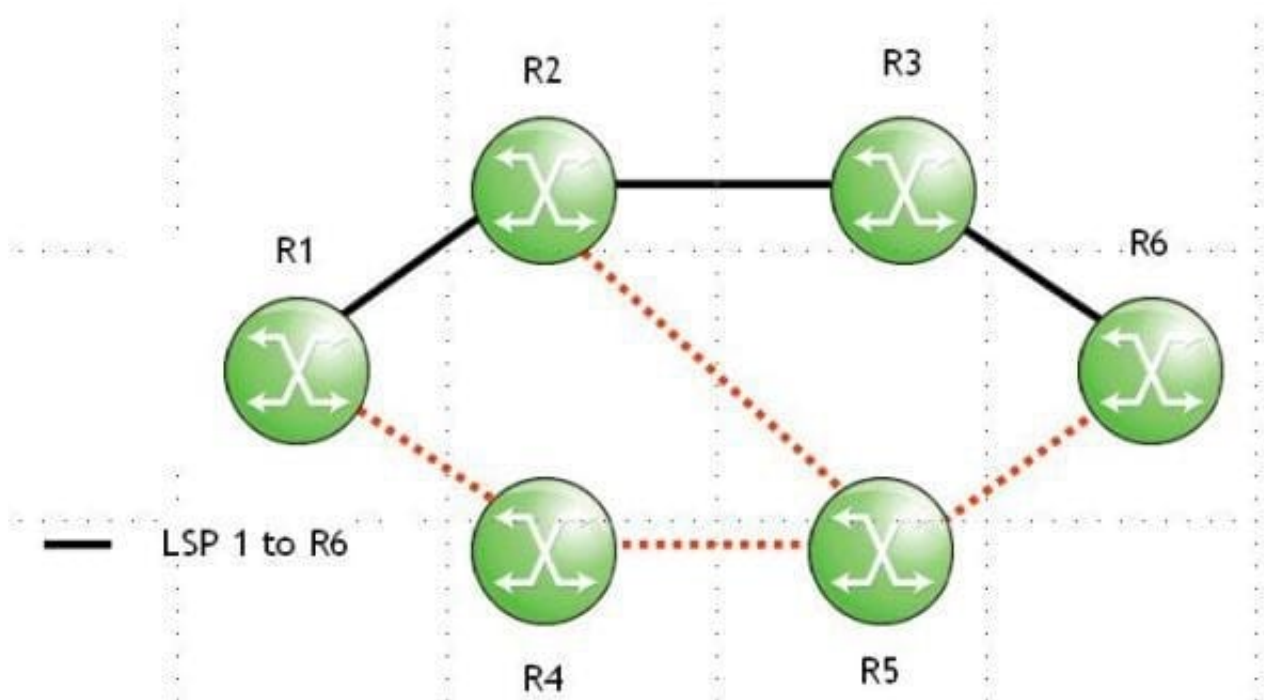
RSVP session state for LSP 1 has timed out on router R3. Which of the following actions will router R3 initiate to clear the RSVP session?

- A. Send a PATH Tear message toward router R6.
- B. Send a PATH Tear message toward router R1.
- C. Send a PATH Error message toward router R6.
- D. Send a PATH Error message toward router R1.

Correct Answer: D

QUESTION 7

Click on the exhibit.



LSP 1's link between routers R3 and R6 has failed, and the RESV state at router R3 has timed out. Which of the following actions will router R3 initiate?

- A. Send a PathTear message towards router R6.
- B. Send a PathTear message towards router R1.
- C. Send a ResvTear message toward router R6.
- D. Send a ResvTear message toward router R1.

Correct Answer: D

QUESTION 8

Which of the following devices inspects the MPLS header in the received packet, and exchanges it for a new MPLS header?

- A. iLER
- B. LER
- C. LSR
- D. PE
- E. eLER

Correct Answer: C

QUESTION 9

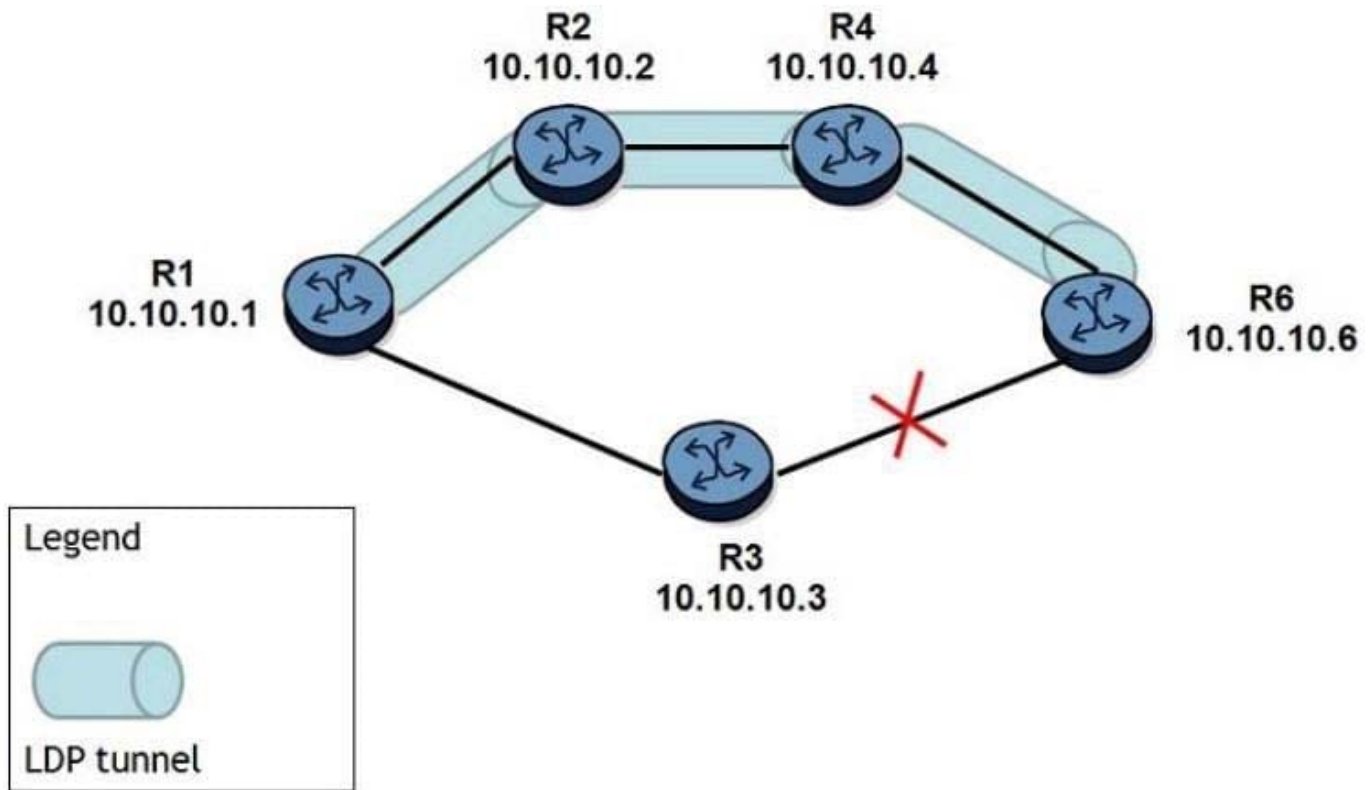
Which of the following about an LSP protected with facility FRR is TRUE?

- A. The LSP can use protection tunnels used by other LSPs.
- B. The LSP can use facility and one-to-one FRR simultaneously.
- C. The LSP is limited to link protection.
- D. A detour protection tunnel is created for this LSP.

Correct Answer: A

QUESTION 10

Click on the exhibit.



An LDP tunnel is established on R1-R2-R4-R6 because the link between routers R3 and R6 is down. With the LDP-IGP Sync feature enabled and after the link is restored, which of the following is FALSE?

- A. Router R3 starts the LDP-Sync timer after recovering the LDP session on R3-R6.
- B. Router R1 continues to use R1-R2-R4-R6 until the LDP-Sync feature is disabled.
- C. Router R3 advertises the maximum metric for the link to router R6.
- D. Router R1 receives a label from router R3 after the LDP session is established on R3-R6.

Correct Answer: B

QUESTION 11

Which of the following statements regarding RSVP refresh reduction are true? (Choose two)

- A. Message-IDs replace individual refresh messages.
- B. Refresh reduction applies only to reservation messages.
- C. RSVP generates a summary-refresh message for each LSP.
- D. An LSP state change causes an incremented Message-ID.

Correct Answer: AD

QUESTION 12

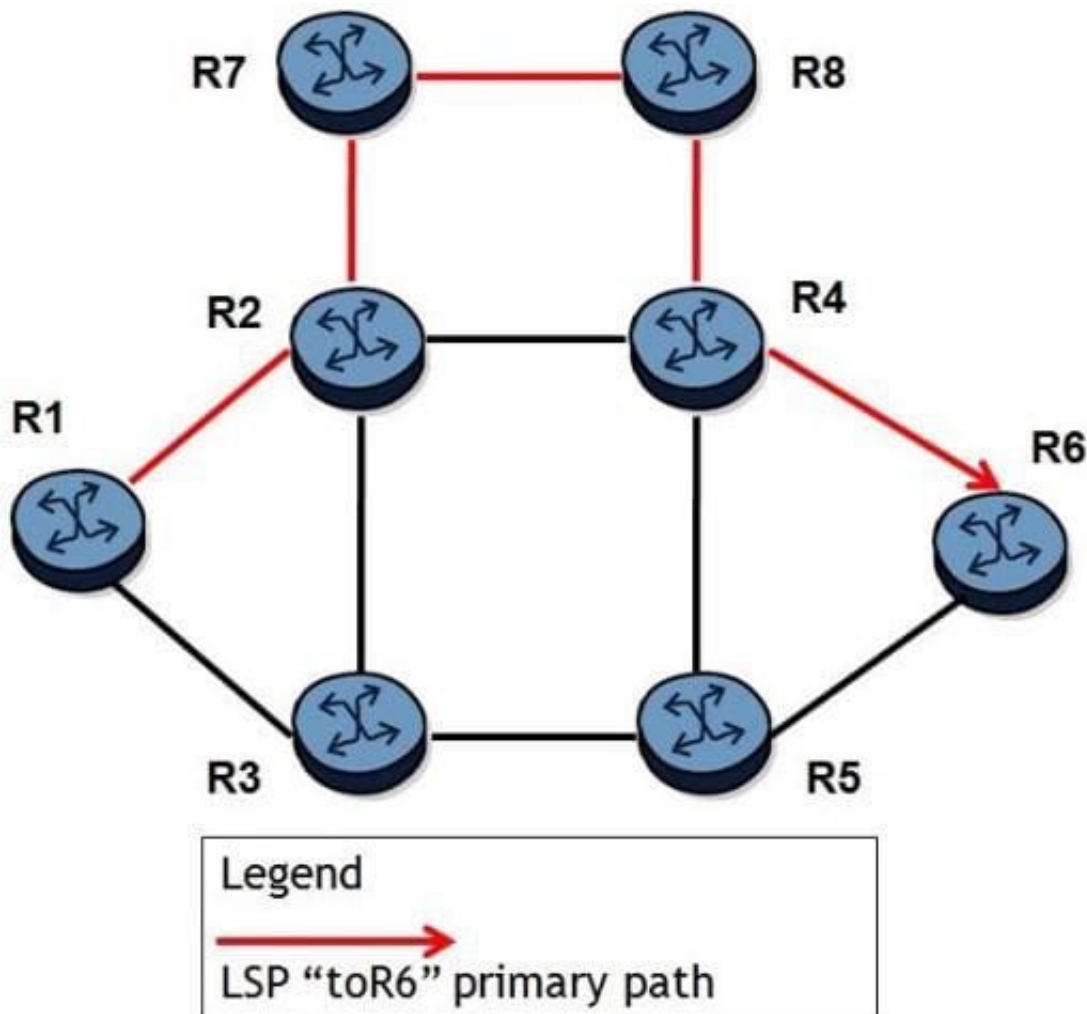
Which of the following about RSVP-TE is FALSE?

- A. It supports traffic protection using IGP equal cost paths.
- B. It supports CAC to prevent resource overbooking.
- C. It supports LSPs with traffic engineering constraints.
- D. It supports LSPs that follow the IGP best path.

Correct Answer: A

QUESTION 13

Click on the exhibit.



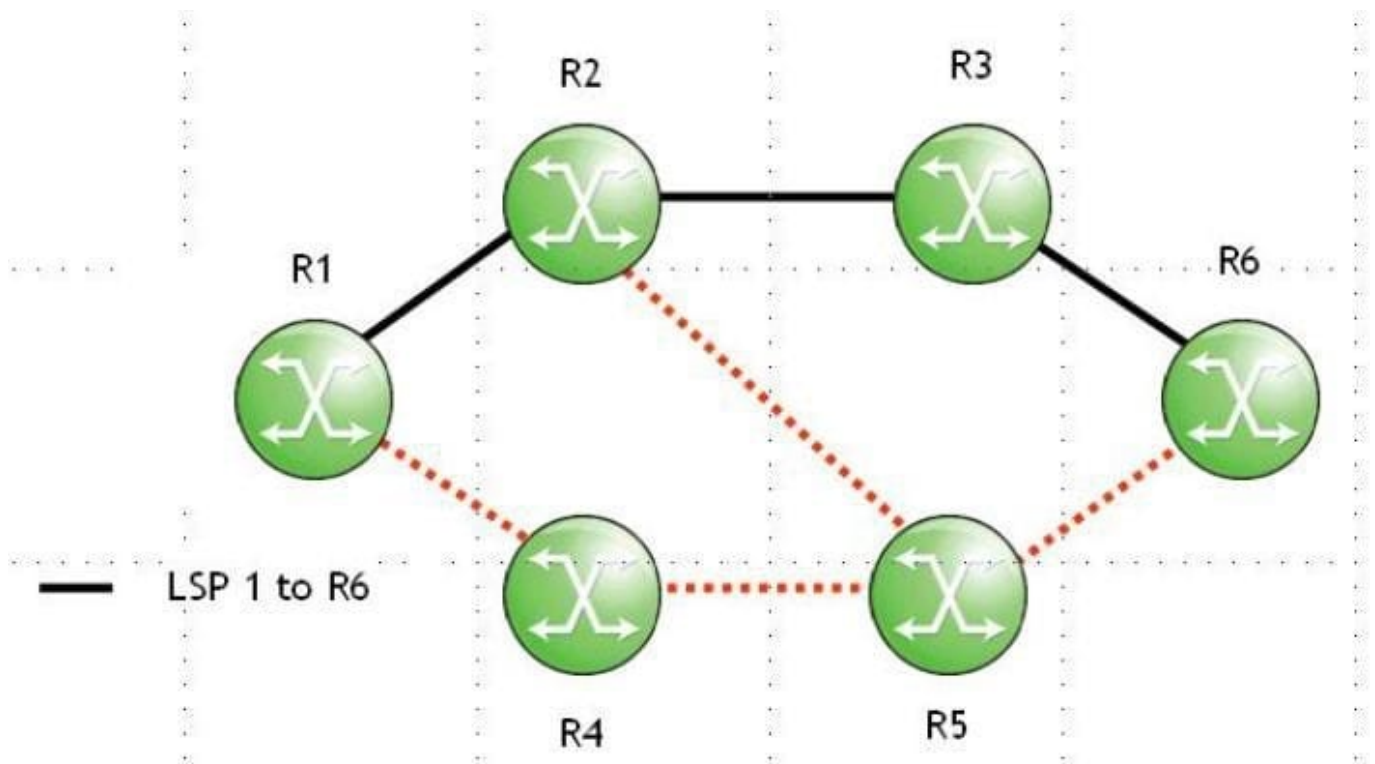
A fully loose LSP "toR6" is configured. All links have the same cost and all routers are Alcatel- Lucent 7750 SRs. The LSP currently traverses the path R1-R2-R7-R8-R4-R6 and the resignal timer is enabled. Which of the following about this LSP is FALSE?

- A. The LSP will switchover to another path if a failure occurs.
- B. The LSP will switchover to a better path as soon as it is available.
- C. CSPF must be enabled for this LSP to attempt to find a better path.
- D. The LSP will switchover to a better path in a MBB fashion.

Correct Answer: B

QUESTION 14

Click on the exhibit.



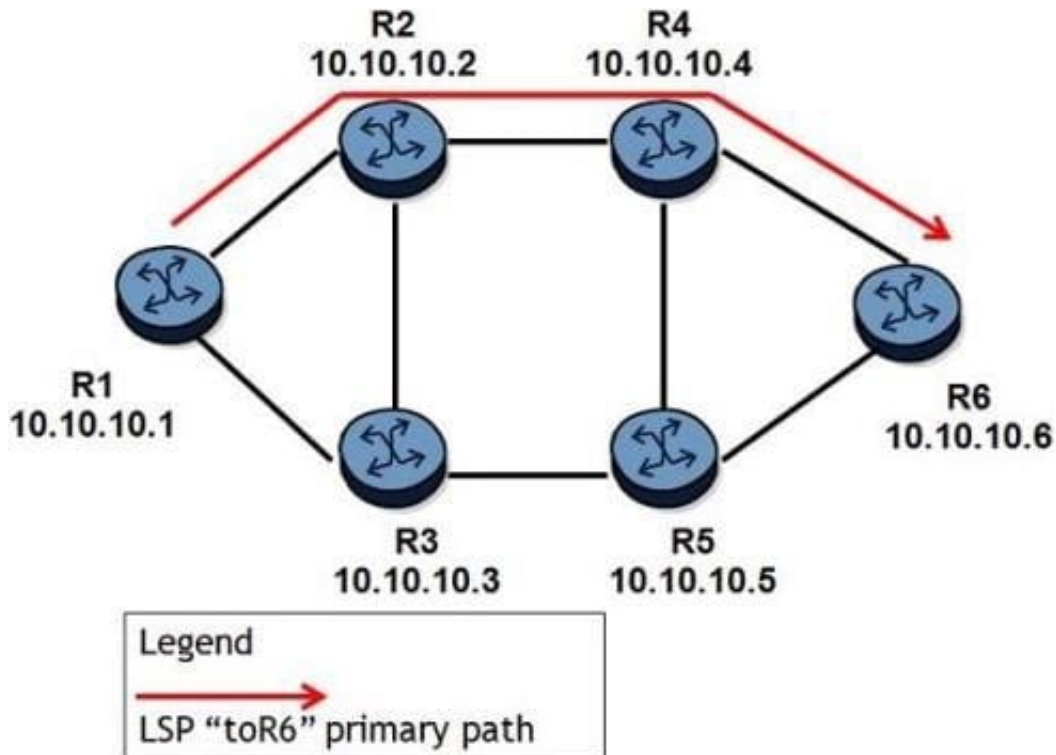
RSVP state for LSP 1 has timed out on router R3. Which of the following actions will router R3 initiate to clear the RSVP session?

- A. Send a RESV Tear message toward router R6.
- B. Send a RESV Tear message toward router R1.
- C. Send a RESV Error message toward router R6.
- D. Send a RESV Error message toward router R1.

Correct Answer: B

QUESTION 15

Click on the exhibit.



An LSP path is established on router R1 toward router R6. If there is a problem on router R4, but the link between R2 and R4 remains up, which of the following will affect the failure detection time?

- A. The time router R2 takes to receive a PATH Error message from router R4.
- B. The time router R2 takes to find out a number of RSVP Hello messages have been missed.
- C. The time router R2 takes to send a PATH Tear message to the head-end router.
- D. The time router R2 takes to receive a PATH message from router R4 after a PATH refresh interval.

Correct Answer: B

[4A0-103 VCE Dumps](#)

[4A0-103 Practice Test](#)

[4A0-103 Braindumps](#)