

# 4A0-100<sup>Q&As</sup>

Alcatel-Lucent Scalable IP Networks

## Pass Alcatel-Lucent 4A0-100 Exam with 100% Guarantee

Free Download Real Questions & Answers **PDF** and **VCE** file from:

<https://www.leads4pass.com/4a0-100.html>

100% Passing Guarantee  
100% Money Back Assurance

Following Questions and Answers are all new published by Alcatel-Lucent Official Exam Center

- ⚙ **Instant Download** After Purchase
- ⚙ **100% Money Back** Guarantee
- ⚙ **365 Days** Free Update
- ⚙ **800,000+** Satisfied Customers



## QUESTION 1

Host A is transmitting data to host B on a TCP connection. What is the purpose of the ACK sent by host B?

- A. The ACK tells the host A that host B wishes to establish a session.
- B. The ACK tells host A the sequence number of the segment that was just received by host B.
- C. The ACK tells host A the sequence number of the next segment that host B expects to see.
- D. The ACK is flow control from host B and tells host A to reduce its transmission rate.

Correct Answer: C

---

## QUESTION 2

Which of the following does a link-state protocol use when choosing the best path to a destination network?

- A. Cost
- B. Round-trip time
- C. Hop-count
- D. Route preference

Correct Answer: A

---

## QUESTION 3

Which of the following is a characteristic of the IP layer?

- A. Provides a connectionless data transmission service.
- B. Provides physical interconnection of network devices.
- C. Provides reliable transfers of data.
- D. Provides services equivalent to the OSI data link layer.

Correct Answer: A

---

## QUESTION 4

What is the sequence of messages sent by a host when it attempts to ping a destination for which it has no Address Resolution Protocol (ARP) cache entry?

- A. ICMP echo request, ARP request, ARP reply, ICMP echo reply.

- B. ARP request, ARP reply, ICMP echo request, ICMP echo reply.
- C. ICMP echo request, ICMP echo reply, ARP request, ARP reply.
- D. ICMP echo request, ARP reply, ARP request, ICMP echo reply.

Correct Answer: B

---

**QUESTION 5**

When forwarding a packet, which field in the following table determines the egress interface?

- A. Preference
- B. Metric
- C. Next-hop
- D. Cost

Correct Answer: C

---

**QUESTION 6**

On what type of device/router is a Service Access Point (SAP) defined?

- A. The SAP is defined on the CE device.
- B. The SAP is defined on the PE device.
- C. The SAP is defined on the P device.
- D. The SAP is defined on both CE and PE devices.

Correct Answer: B

---

**QUESTION 7**

Which of the following statements about packet forwarding is FALSE?

- A. The router consults the forwarding table on the ingress IOM.
- B. The router looks for a longest match to the destination IP address.
- C. The router resolves the next-hop address of the matching route to a physical interface.
- D. If there is no match in the forwarding table, the router sends a "No route to destination" notification.

Correct Answer: A

---

**QUESTION 8**

Which of the following best describes the function of an ARP cache within the same subnet?

- A. Used by IP to map an unknown IP address to the known hardware address of the distant host.
- B. Adds only an IP address entry for an unknown device on the same subnet.
- C. Transmits ICMP messages to multiple hosts with unknown IP addresses.
- D. Resolves the MAC address of a host device given its IP address.

Correct Answer: D

---

**QUESTION 9**

Which of the following describes a default route?

- A. It is used when forwarding control plane data to the local CPM.
- B. It is used when there is no other known route for a given packet's destination.
- C. It matches a specific /32 host address with the least cost to the destination.
- D. It is used when forwarding multicast and broadcast packets.

Correct Answer: B

---

**QUESTION 10**

Which of the following Nokia 7750 SR components is NOT part of the data plane?

- A. The Media Dependent Adapter (MDA)
- B. The Input/ Output Module (IOM)
- C. The Switch Fabric (SF)
- D. The Control Processor Module (CPM)

Correct Answer: D

---

**QUESTION 11**

What happens immediately after an Ethernet switch receives an Ethernet frame?

- A. It records the destination MAC address and the interface on which it arrived.
- B. It records the source MAC address and the interface on which it arrived.
- C. It floods the frame out of all its interfaces except the interface on which the frame arrived.

D. It transmits the frame out of the appropriate interface.

Correct Answer: B

## QUESTION 12

Multiple SAPs may be defined on the same physical port and may be used for different services.

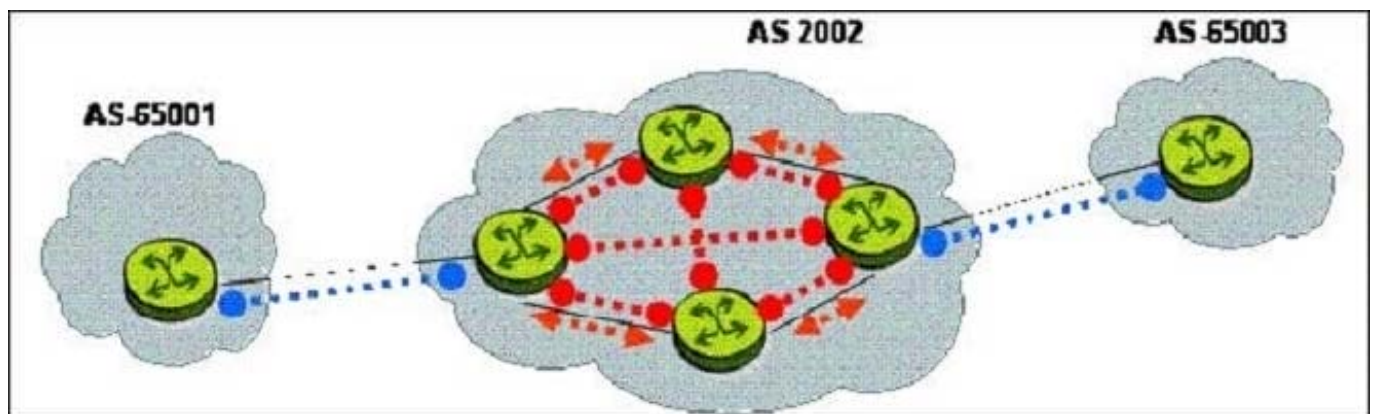
A. True

B. False

Correct Answer: A

## QUESTION 13

In the diagram, what type of BGP session is established between the routers of AS 65001 and AS 2002?



A. IGP

B. IBGP

C. EBGP

D. EGP

E. BGP cannot be run between routers in different ASs.

Correct Answer: C

## QUESTION 14

Which statement best describes a SAP?

A. The Service ATM Point is used for ATM connections to a PE.

B. The Service Access Point is defined on the PE device and is the customers access to the service.

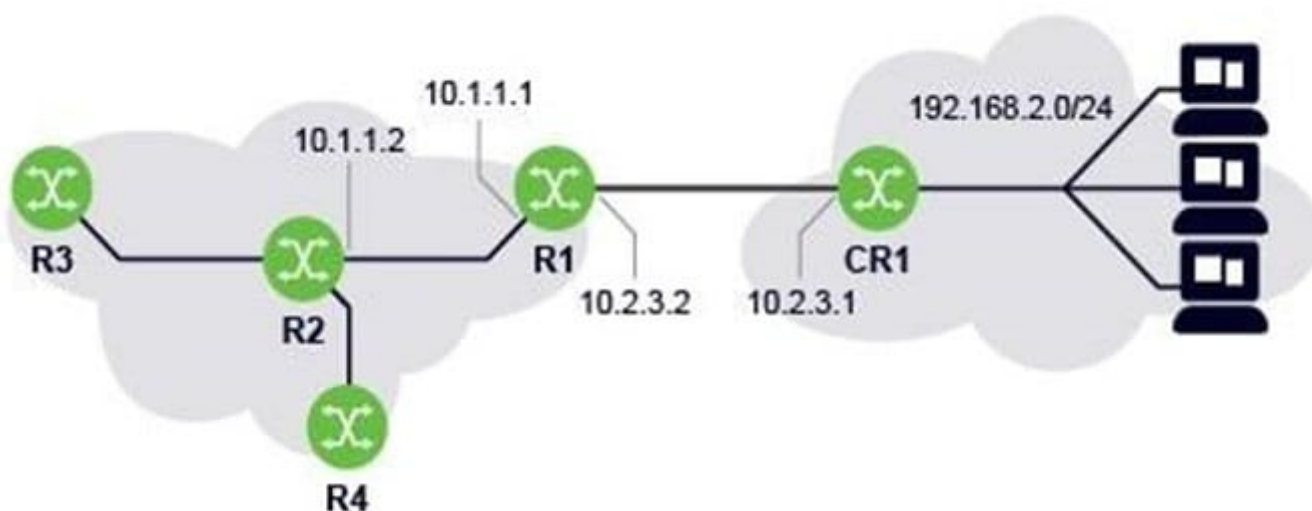
C. The Service Access Point is defined on the P device and is the customers access to the service.

D. The Service Access Point is defined on the CE device and is the customers access to the service.

Correct Answer: B

## QUESTION 15

What next-hop should be used on CR1 to configure a default route to router R1?



A. 10.2.3.2

B. 10.2.3.1

C. 192.168.2.0

D. 10.1.1.1

Correct Answer: A

[Latest 4A0-100 Dumps](#)

[4A0-100 Practice Test](#)

[4A0-100 Study Guide](#)