

3101^{Q&As}

Avaya Aura® Communication Manager and CM Messaging -
Embedded Maintenance and Troubleshooting Exam

Pass Avaya 3101 Exam with 100% Guarantee

Free Download Real Questions & Answers **PDF** and **VCE** file from:

<https://www.leads4pass.com/3101.html>

100% Passing Guarantee
100% Money Back Assurance

Following Questions and Answers are all new published by Avaya
Official Exam Center

- ⚙ **Instant Download** After Purchase
- ⚙ **100% Money Back** Guarantee
- ⚙ **365 Days** Free Update
- ⚙ **800,000+** Satisfied Customers



QUESTION 1

Which SAT command lists the status of LSPs and ESSs?

- A. List survivable-processor
- B. display system-parameters duplication
- C. List configuration stations
- D. status station

Correct Answer: A

QUESTION 2

The Communication manager trunk group that carries calls to Communication Manager Messaging in H.323 integration should have which option in the Group Type field?

- A. H.323
- B. ISDN
- C. SIP
- D. Q.931

Correct Answer: B

QUESTION 3

Telephone bills indicate an unusual level of usage of outbound traffic on the inbound-only trunk. Which command would you use to validate that calls are not being made on the inbound trunk group only?

- A. list trace tac
- B. List measurement route-pattern
- C. List measurements trunk-group
- D. List measurements call-rate

Correct Answer: C

Page 164 Avaya Aura™ Communication Manager Reports

QUESTION 4

With the trend toward convergence, more customers have been connecting their port networks at remote locations across a WAN connection from Communication Manager.

Which timing consideration typically affects these remote port networks?

- A. CLAN timers can be administrator from 3-15 seconds.
- B. IPSI timers can be administrator from 3-15 seconds
- C. the CM primary Search Timer can be administrator from 15-3600 seconds
- D. H.248 Link Bounce Timer can be administered from 1-30 seconds.
- E. H.323 Link Bounce Timer can be administered from 1-60 seconds

Correct Answer: B

QUESTION 5

A mailbox must have a valid entry in the Type Field. Which four options can you use In the Type field for a subscriber mailbox?

- A. Call Answer, None, Broadcast, Auto-Attendant
- B. Auto-Attendant, Guest mailbox, None, Bulletin-Board
- C. Bulletin-Board, None, Announcement-control, Auto-Attendant
- D. None, Call Answer, Bulletin-board, Auto-Attendant

Correct Answer: D

Explanation:

QUESTION 6

An IP telephone is registered and has dial tone, but Telephones In the same work area work properly. What Is the likely source of the problem?

- A. Faulty gateway port
- B. Incorrect dial plan
- C. Station administration
- D. Trunk group administrator

Correct Answer: C

QUESTION 7

Which two statements are true about shuffling? (Choose two.)

- A. Improves voice quality by directly connecting only same-model IP endpoints
- B. Improves resource allocation by bypassing the TN Media Processor/Resource circuit pack
- C. Improves voice quality by dynamically directing media conversion to all available resource
- D. Administered system-wide on the System Parameters Features form
- E. Administered on individual station form

Correct Answer: BE

page 90 Administering Network Connectivity on Avaya Aura™ Communication Manager

QUESTION 8

Which two switching processes work together in an external call process setup? (Choose two)

- A. Hunt group
- B. Pickup group
- C. Trunk group
- D. signaling group
- E. Abbreviated dialing group

Correct Answer: CD

QUESTION 9

When using SIP integration for Communication Manager Messaging and fax Messaging is going to be used, to what should the mode for fax on the ip-codec-set form be set?

- A. Relay
- B. T.38-standard
- C. T.30-standard
- D. Standard

Correct Answer: B

56 Implementing Avaya Aura™ Communication Manager Messaging Federal

QUESTION 10

Which two statements describe Inter Gateway Alternate Routing (IGAR)? (choose two)

- A. IGAR is used in single-server system with IP WAN connected bearer traffic between port networks or media gateways
- B. IGAR provides multiple alternate IP WAN routes based on bearer traffic and SLAs.
- C. IGAR is multiple gateways used in multi-server systems over dedicated network segments
- D. IGAR is used in single-server systems with unusually high latency LAN
- E. IGAR provides an alternate PSTN connection when the IP WAN is incapable of carrying the bearer traffic.

Correct Answer: AE

Reference Page 10 Administering Network Connectivity on Avaya Aura™ Communication Manager

QUESTION 11

A subscriber is not able to receive new messages. The voice messaging administrator checks the system and notices a large number of threshold exceptions for the subscriber. The administrator needs to resolve the threshold warnings and enable the subscriber's mailbox to receive new message without affecting existing messages.

What would you recommend to the voice messaging administrator?

- A. Log into the system using Profile 18 and increase the mailbox space on the Subscriber or COS.
- B. Log into the system using Profile 18 and decrease the message retention time on the Subscribers or COS screens.
- C. Log into the system using Profile 19 and increase the message retention time on the Subscribers or COS screens.
- D. Log into the system using profile 19 and decrease the message retention time on the Subscriber or COS screens.

Correct Answer: A

QUESTION 12

A subscriber is connected to the server through a LAN session and accesses the subscriber mailbox using an email client but is not able to download message on

the client computer.

(Choose Two)

- A. Trusted Server Access = yes
- B. Trusted Server Access = no

C. MAPI Message Transfer = yes

D. MAPI Message Transfer - no

E. MAPI Access = yes

Correct Answer: AC

QUESTION 13

You are calling a station and it continues to ring but does not go to voicemail. The Communication Manager Messaging hunt group number can be called and It works fine.

What can the problem be?

A. Send all calls Is not activated at the Station

B. Voicemail is currently down

C. The station does not have the correct coverage option set.

D. A portion of the voice channels show a state of MANOOS.

Correct Answer: C

QUESTION 14

Which command can you use to troubleshoot port network routing/tracing problems to devices greater than six hops away?

A. tracer

B. trace-rout

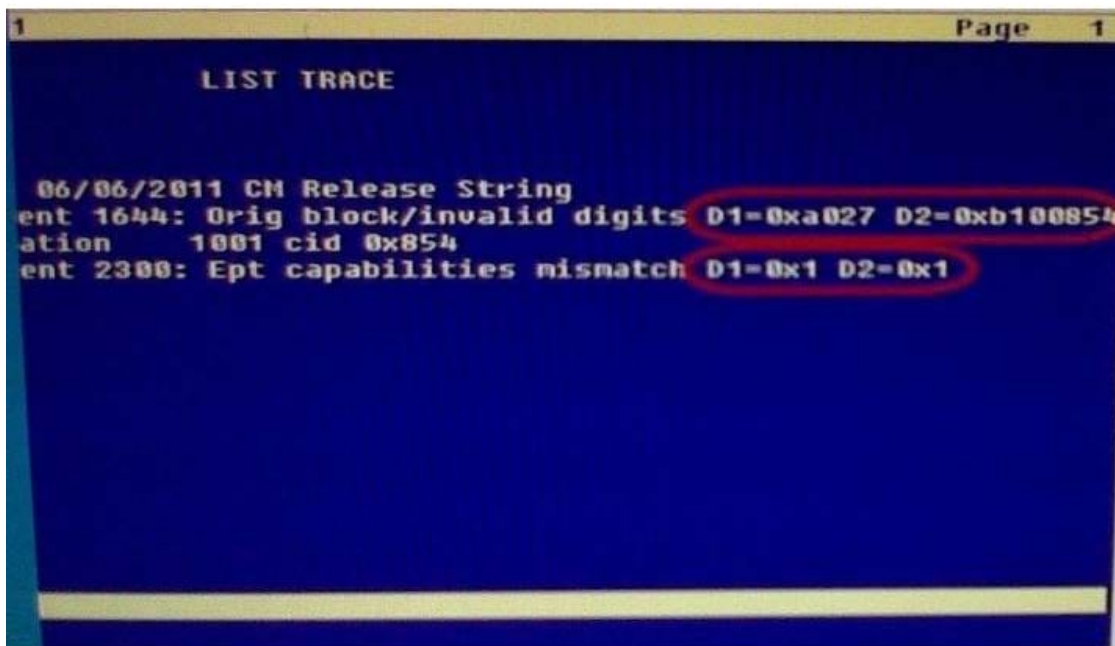
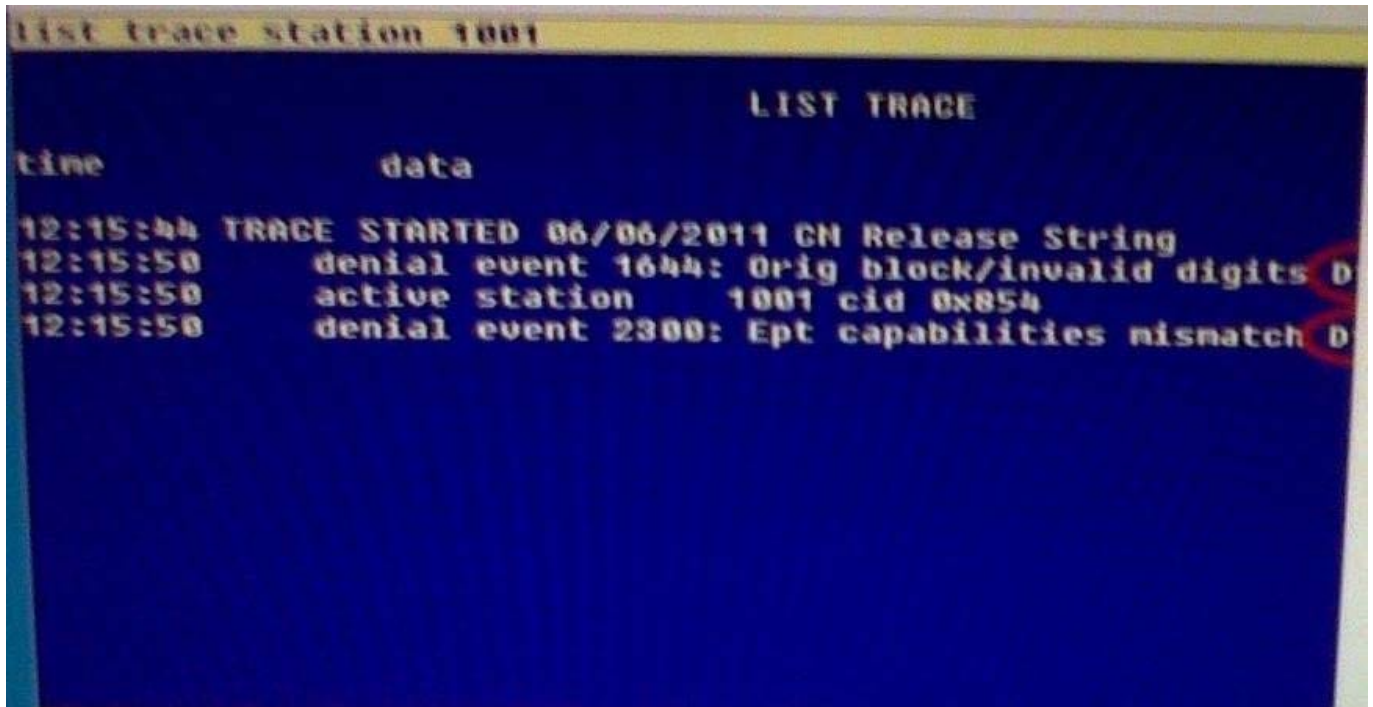
C. List trace

D. /user/sbin/tracepath6

Correct Answer: B

QUESTION 15

Exhibit displays a list trace report on a station.



What are the D1 and D2 values for the denial events in the list trace report?

- A. Hexadecimal destination codes that are listed in the Denial Event documentation
- B. Hexadecimal data that must be converted to binary then interpreted in the Denial events document
- C. Binary destination codes that are listed in the Denial Events documentation
- D. Binary data listed in the Communication Manager Denial Events

Correct Answer: B

[Latest 3101 Dumps](#)

[3101 VCE Dumps](#)

[3101 Practice Test](#)