

300-620^{Q&As}

Implementing Cisco Application Centric Infrastructure (DCACI)

Pass Cisco 300-620 Exam with 100% Guarantee

Free Download Real Questions & Answers **PDF** and **VCE** file from:

<https://www.leads4pass.com/300-620.html>

100% Passing Guarantee
100% Money Back Assurance

Following Questions and Answers are all new published by Cisco
Official Exam Center

-  **Instant Download** After Purchase
-  **100% Money Back** Guarantee
-  **365 Days** Free Update
-  **800,000+** Satisfied Customers



QUESTION 1

Refer to the exhibit.

```
Fault Code: F0955
Severity: warning
Last Transition: 2021-02-07T17:57:59.115+00:00
Lifecycle: Raised
Affected Object: uni/tn-Raccoon_City/ap-App-1/epg-EPG-3/rsbd
Description: Failed to form relation to MO BD-BD-3 of class fvBD in context
Type: Config
Cause: resolution-failed
Change Set: state (Old: formed, New: missing-target), tDn (Old: uni/tn-Raccoon_City/BD-BD-3, New: )
Created: 2021-02-07T17:57:59.115+00:00
Code: F0955
Number of Occurrences: 1
Original Severity: warning
Previous Severity: warning
Highest Severity: warning
```

A Cisco APIC raises this fault when connectivity for EPG-3 is configured. Which action clears the fault?

- A. Associate BD-3 to VRF-1.
- B. Implement a domain for EPG-3.
- C. Configure a subnet on BD-3.
- D. Create BD-3 for EPG-3.

Correct Answer: D

QUESTION 2

A customer is deploying a new application across two ACI pods that is sensitive to latency and jitter. The application sets the DSCP values of packets to AF31 and CS6, respectively. Which configuration changes must be made on the APIC to support the new application and prevent packets from being delayed or dropped between pods?

- A. disable DSCP mapping on the IPN devices
- B. disable DSCP translation policy
- C. align the ACI QoS levels and IPN QoS policies
- D. align the custom QoS policy on the EPG site in the customer tenant

Correct Answer: C

In order to preserve the proper QoS Level of the packet and avoid high priority packets from being delayed or dropped, you can use a DSCP translation policy for traffic that goes between multiple PODs connected by an IPN.

Also Note For traffic passing through the IPN, do not map any DSCP values to CS6. Which leaves only C as viable answer. As you have to align QoS. as per

ref:https://www.cisco.com/c/en/us/td/docs/switches/datacenter/aci/apic/sw/kb/Cisco-APIC-and-QoS.html#id_34903

QUESTION 3

Which action sets Layer 2 loop migration in an ACI Fabric with a Layer 2 Out configured?

- A. Enable MCP on the ACI fabric.
- B. Disable STP in the external network.
- C. Disable STP on the ACI fabric.
- D. Enable STP on the ACI fabric.

Correct Answer: A

QUESTION 4

An organization deploys active-active data centers and active-standby firewalls in each data center. Which action should be taken in a Cisco ACI Multi-Pod to maintain traffic symmetry through the firewalls?

- A. Disable Resilient Hashing.
- B. Disable service node Health Tracking.
- C. Enable Pod ID Aware Redirection.
- D. Enable Endpoint Dataplane Learning.

Correct Answer: B

QUESTION 5

An engineer configures a Cisco ACI Multi-Pod for disaster recovery. Which action should be taken for the new nodes to be discoverable by the existing Cisco APICs?

- A. Configure IGMPv3 on the interfaces of IPN routers that face the Cisco ACI spine.
- B. Enable subinterfaces with dot1q tagging on all links between the IPN routers.
- C. Enable DHCP relay on all links that are connected to Cisco ACI spines on IPN devices.

D. Configure BGP as the underlay protocol in IPN.

Correct Answer: A

DHCP relay support: One of the nice functionalities offered by the ACI Multi-Pod solution is the capability of allowing auto-provisioning of configuration for all the ACI devices deployed in remote Pods. This allows those remote Pods to join the Multi-Pod fabric with zero-touch configuration, as it normally happens to ACI nodes part of the same fabric (Pod).

QUESTION 6

An engineer must configure a service graph for the policy-based redirect to redirect traffic to a transparent firewall. The policy must be vendor-agnostic to support any firewall appliance. Which two actions accomplish these goals? (Choose two.)

- A. Set Context Aware to Single.
- B. Set the Service Type to Other.
- C. Set Promiscuous Mode to True.
- D. Set Function Type to L2.
- E. Set Managed to True.

Correct Answer: BD

QUESTION 7

An engineer must adjust the time on a Cisco ACI fabric. The implementation must use a single external time server and the APIC management interfaces for the communication. Which action accomplishes this goal?

- A. Enable the Date and Time offset state in the system settings.
- B. Set the NTP provider minimum polling interval to 1.
- C. Set the NTP provider in default Date and Time policy.
- D. Create a contract in the management tenant to allow UDP port 123.

Correct Answer: C

QUESTION 8

A customer requested the creation of a VLAN POOL for VMM integration. The pool must support the creation of 999 dynamic and 10 static VLANs. Which VLAN pool implementation meets the customer requirements?

Ⓐ

Name: VMM-VLP
Description: [empty]

Allocation Mode: **Dynamic Allocation** | Static Allocation

Encap Blocks: [trash] +

VLAN Range	Allocation Mode	Role
[1000-1999]	Inherit allocMode from par...	External or On the wire en...
[2000-2009]	Static Allocation	External or On the wire en...

Ⓑ

Name: VMM-VLP
Description: [empty]

Allocation Mode: **Dynamic Allocation** | Static Allocation

Encap Blocks: [trash] +

+ VLAN Range	Allocation Mode	Role
[1000-1999]	Static Allocation	External or On the wire encapsula...
[2000-2009]	Inherit allocMode from parent	External or On the wire encapsula...

Ⓒ

Name: VMM-VLP
Description: [empty]

Allocation Mode: Dynamic Allocation | **Static Allocation**

Encap Blocks: [trash] +

+ VLAN Range	Allocation Mode	Role
[1000-1999]	Static Allocation	External or On the wire encapsula...
[2000-2009]	Inherit allocMode from parent	External or On the wire encapsula...

Ⓓ

Name: VMM-VLP
Description: [empty]

Allocation Mode: Dynamic Allocation | **Static Allocation**

Encap Blocks: [trash] +

+ VLAN Range	Allocation Mode	Role
[1000-1999]	Inherit allocMode from parent	External or On the wire encapsula...
[2000-2009]	Inherit allocMode from parent	External or On the wire encapsula...

A. Option A

B. Option B

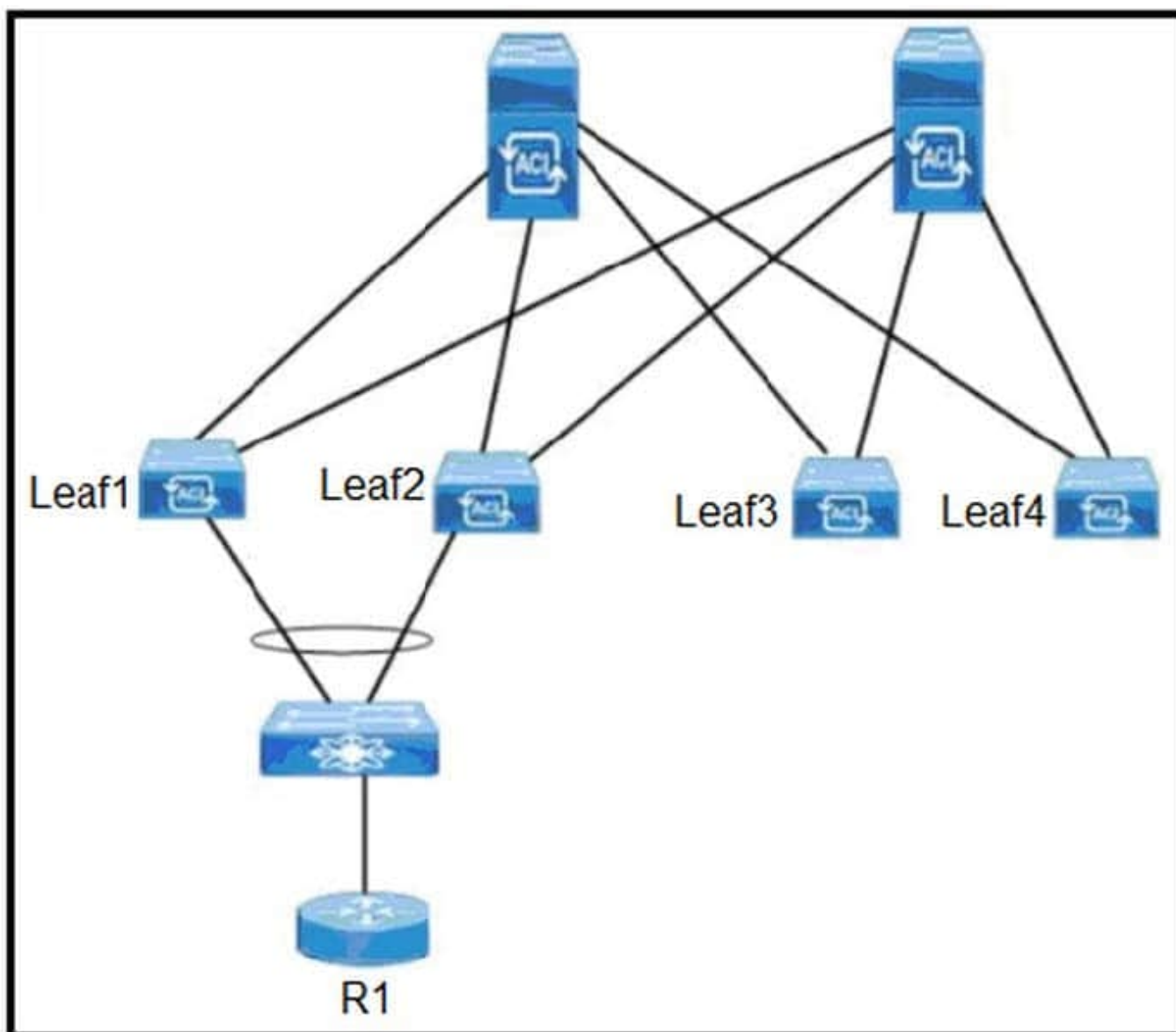
C. Option C

D. Option D

Correct Answer: A

QUESTION 9

Refer to the exhibit.



An engineer plans to upgrade the Cisco ACI fabric. Leaf1 and Leaf2 are deployed in a VPC. The fabric is peering with

R1 using BGP protocol.

Which two actions upgrade the fabric nondisruptively? (Choose two.)

- A. Configure the Graceful upgrade option.
- B. Disable the BGP neighborship between Cisco ACI fabric and R1.
- C. Enable the Graceful Insertion and Removal option.
- D. Configure one maintenance group for every leaf.
- E. Create one update group for all spines.

Correct Answer: AC

QUESTION 10

An engineer has set the VMM resolution immediacy to pre-provision in a Cisco ACI environment. No Cisco Discovery Protocol neighborship has been formed between the hypervisors and the ACI fabric leaf nodes.

How does this affect the download policies to the leaf switches?

- A. No policies are downloaded because LLDP is the only supported discovery protocol.
- B. Policies are downloaded when the hypervisor host is connected to the VMM VDS.
- C. Policies are downloaded to the ACI leaf switch regardless of Cisco Discovery Protocol neighborship.
- D. No policies are downloaded because there is no discovery protocol neighborship.

Correct Answer: C

Pre-provision—Specifies that a policy (for example, VLAN, VXLAN binding, contracts, or filters) is downloaded to a leaf switch even before a VM controller is attached to the virtual switch (for example, VMware VDS). This pre-provisions the configuration on the switch.

https://www.cisco.com/c/en/us/td/docs/switches/datacenter/aci/apic/sw/1-x/aci-fundamentals/b_ACI-Fundamentals/b_ACI-Fundamentals_chapter_01011.html

QUESTION 11

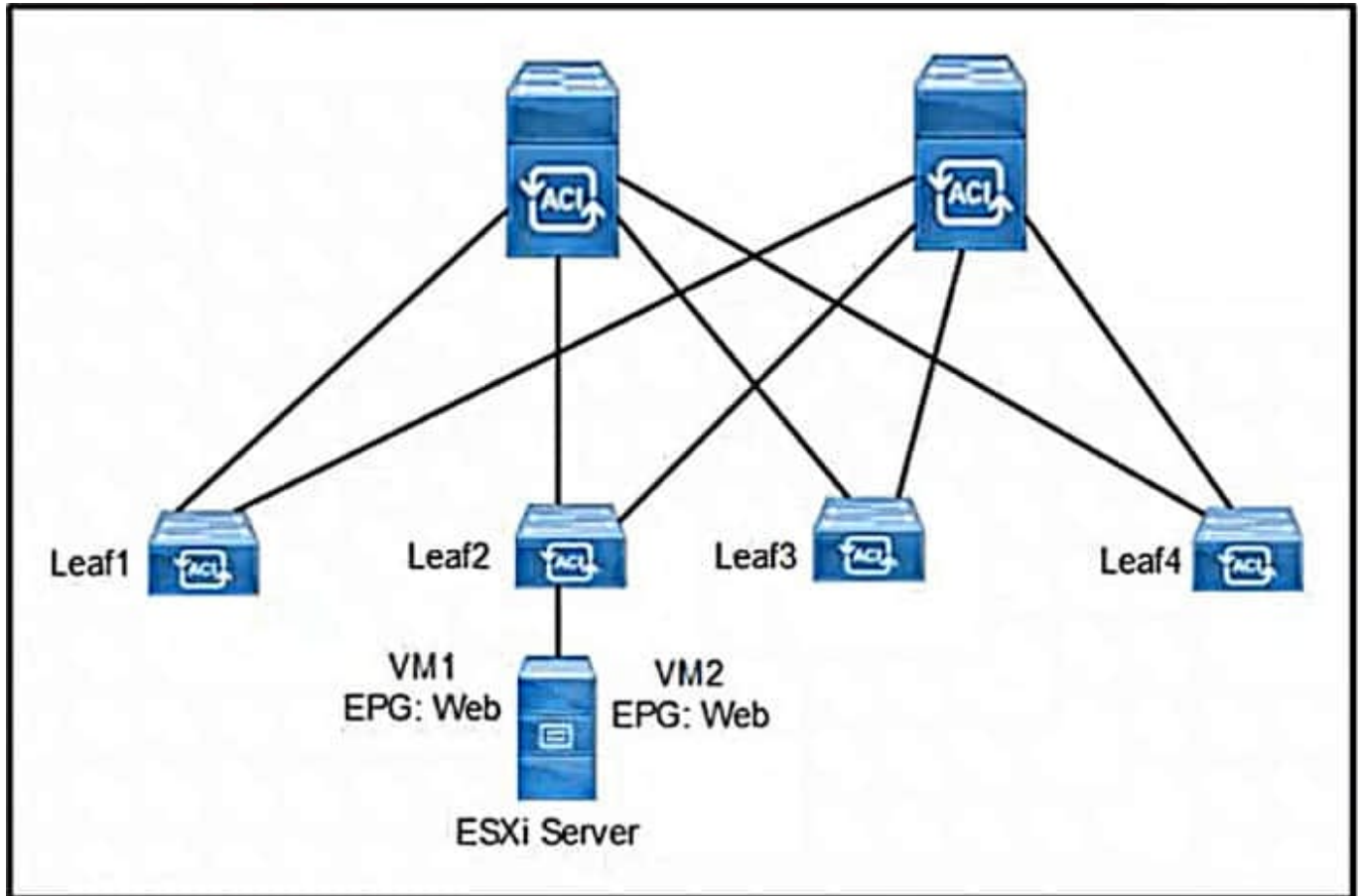
An engineer must implement management policy and data plane separation in the Cisco ACI fabric. Which ACI object must be created in Cisco APIC to accomplish this goal?

- A. Application profile
- B. Tenant
- C. Contract
- D. Bridge domain

Correct Answer: B

QUESTION 12

Refer to the exhibit.



The VMs called VM1 and VM2 are deployed on the ESXi Server in a Cisco ACI environment. VM1 has MAC address A and an IP address 192.168.1.1/24, and VM2 has MAC address B. VM1 has been shut down. Which set of actions must be taken to detect the movement of IP address 192.168.1.1/24 to MAC address B?

- A. Enable ARP flooding. Disable unicast routing. Enable GARP-based detection.
- B. Disable ARP flooding. Disable unicast routing. Disable GARP-based detection.
- C. Disable ARP flooding. Enable unicast routing. Disable GARP-based detection.
- D. Enable ARP flooding. Enable unicast routing. Enable GARP-based detection.

Correct Answer: D

GARP is used to update IP to MAC relation on upstream network devices. It is most relevant in case of vmotions or VMs/servers moving from one host to another, and the MAC address changes, but the IP remains the same.

In the context of ACI, the leaf switches can detect MAC and IP address movement between leaf switch ports, leaf switches, bridge domains, and EPGs, but it does not detect the movement of an IP address to a new MAC address if

the new MAC address is from the same interface and same EPG as the old MAC address.

When the GARP based detection option is enabled (configuration available under the BD), Cisco ACI will trigger an endpoint move based on GARP packets if the move occurs on the same interface and same EPG. If a GARP packet comes from the same interface and same EPG, then endpoint learning is triggered only when Unicast Routing, ARP Flooding, and “GARP based detection” are all enabled for the bridge domain.

QUESTION 13

A network engineer must configure a Cisco ACI system to detect network loops for untagged and tagged traffic. The loop must be detected and stopped by disabling an interface within 4 seconds. Which configuration must be used?

A.

Name:

Description:

Format:

Start Now:

Target DN:

Snapshot:

Scheduler:

Export Destination:

Modify Global AES Encryption Settings: **Enabled**

B.

Name:

Description:

Format:

Start Now:

Target DN:

Snapshot:

Scheduler:

Export Destination:

Modify Global AES Encryption Settings: **Enabled**

C.

Name:

Description:

Format:

Start Now:

Target DN:

Snapshot:

Scheduler:

Modify Global AES Encryption Settings: **Enabled**

D.

Name:

Description:

Format:

Start Now:

Target DN:

Snapshot:

Scheduler:

Modify Global AES Encryption Settings: **Enabled**

A. Option A

B. Option B

C. Option C

D. Option D

Correct Answer: B

QUESTION 14

A Cisco APIC is configured with RADIUS authentication as the default. The network administrator must ensure that users can access the APIC GUI with a local account if the RADIUS server is unreachable. Which action must be taken to accomplish this goal?

A. Associate console authentication with the "RADIUS" realm

B. Reference the "local" realm in the fallback domain

C. Create an additional login domain that references local accounts

D. Enable the fallback check with the default authentication domain

Correct Answer: B

QUESTION 15

What is the result of the pcEnPref flag configured on the epg-App_EPG?

```
admin@apic1:-->moquery -d uni/tn-Sales/ap-eCommerce_AP/epg-App_EPG
Total Objects shown: 1
# fv.AEPg
name: App_EPG
annotation:
<... output omitted...>
modTs: 2019-10-07T09:09:56.780+00:00
monPolDn: uni/tn-common/monepg-default
nameAlias
pcEnfPref: enforced
pcTag: 49154
prefGrMemb: exclude
prior: unspecified
rn: epg-App_EPG
triggerSt: triggerable
txld: 7493589085947634498
uid: 15374
```

- A. Any configuration changes to the private network are validated.
- B. Access control rules for the L3Out network are applied.
- C. Access control rules for the private network are applied.
- D. Any changes to the underlying EPG objects are forbidden.

Correct Answer: C

[300-620 PDF Dumps](#)

[300-620 Practice Test](#)

[300-620 Study Guide](#)