

300-420^{Q&As}

Designing Cisco Enterprise Networks (ENSLD)

Pass Cisco 300-420 Exam with 100% Guarantee

Free Download Real Questions & Answers **PDF** and **VCE** file from:

<https://www.leads4pass.com/300-420.html>

100% Passing Guarantee
100% Money Back Assurance

Following Questions and Answers are all new published by Cisco
Official Exam Center

-  **Instant Download** After Purchase
-  **100% Money Back** Guarantee
-  **365 Days** Free Update
-  **800,000+** Satisfied Customers



QUESTION 1

Which two steps can be taken to improve convergence in an OSPF network? (Choose two.)

- A. Use Bidirectional Forwarding Detection
- B. Merge all the areas into one backbone area
- C. Tune OSPF parameters
- D. Make all non-backbone areas stub areas
- E. Span the same IP network across multiple areas.

Correct Answer: AC

QUESTION 2

A network engineer is redesigning a company's QoS solution. The company is currently using IP Precedence, but the engineer plans to move to DiffServ. It is important that the new solution provide backward compatibility with the current solution. Which technology should the design include?

- A. expedited forwarding
- B. assured forwarding
- C. class selector code points
- D. default per hop behavior

Correct Answer: C

QUESTION 3

When IPsec VPNs are designed, what is a unique requirement if support for IP Multicast is required?

- A. encapsulation of traffic with GRE or VTI
- B. IPsec forwarding using transport mode
- C. additional bandwidth for headend
- D. IPsec forwarding using tunnel mode

Correct Answer: A

QUESTION 4

A network engineer must design an MSDP multicast solution to provide RP resilience in a network with two separate

domains. Also, multicast sources and receivers must register with the local RP. Which solution must the engineer choose?

- A. Configure the RP has value to 0, and traffic will route to the closest RP
- B. Configure the RP loopback interface with the same IP address/32, and traffic will route to the closest RP
- C. Configure the RP group ranges to split the multicast traffic, and traffic will route to the longest match
- D. Configure the RP priority with the same value, and traffic will route to the closest RP

Correct Answer: B

QUESTION 5

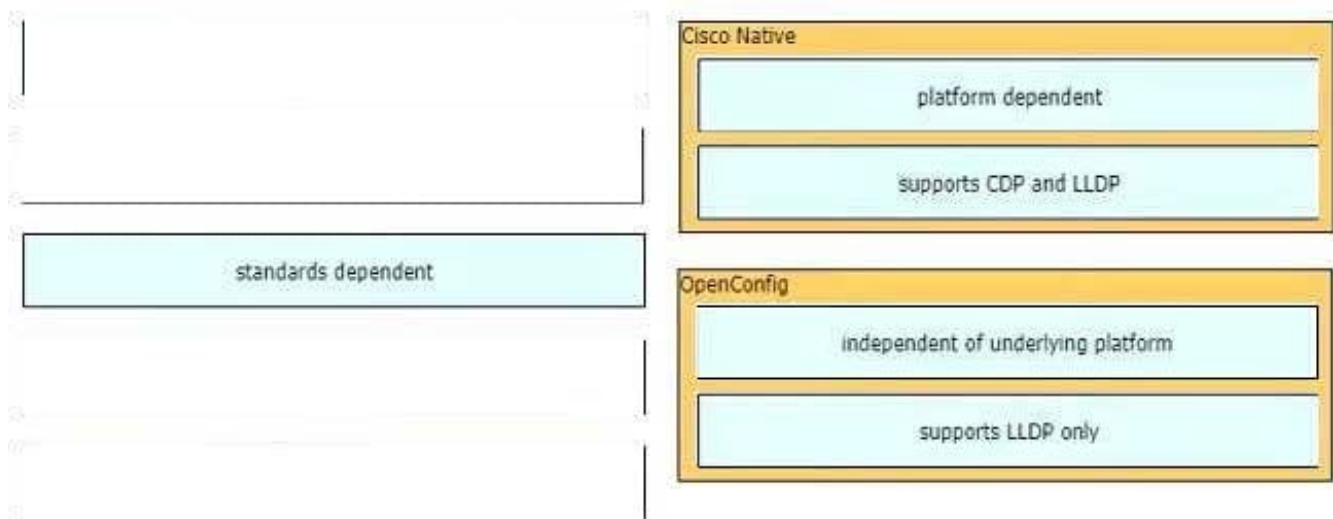
DRAG DROP

Drag and drop the characteristics from the left onto the YANG modules they describe on the right. Not all options are used.

Select and Place:

independent of underlying platform	Cisco Native
platform dependent	
standards dependent	OpenConfig
supports LLDP only	
supports CDP and LLDP	

Correct Answer:

**QUESTION 6**

Company A recently acquired another company. Users of the newly acquired company must be able to access a server that exists on Company A's network, both companies use overlapping IP address ranges. Which action conserves IP address space and provides access to the server?

- A. Use a single IP address to create overload NAT
- B. Use a single IP address to create a static NAT entry
- C. Build one-to-one NAT translation for every user that needs access
- D. Re-IP overlapping address space in the acquired company

Correct Answer: A

QUESTION 7

Which feature must be incorporated into the campus LAN design to enable Wake on LAN?

- A. dynamic ARP Inspection Snooping on layer 2 devices
- B. directed broadcasts on layer 3 devices
- C. proxy ARP on layer 3 devices
- D. DHCP Snooping on layer 2 devices

Correct Answer: B

QUESTION 8

An engineer is tasked with designing a dual BGP peering solution with a service provider. The design must meet these conditions:

1.

The routers will not learn any prefix with a subnet mask greater than /24.

2.

The routers will determine the routes to include in the routing table based on the length of the mask alone.

3.

The routers will make this selection regardless of the service provider configuration.

Which solution should the engineer include in the design?

A. Use a route map and access list to block the desired networks, and apply the route map to BGP neighbors inbound.

B. Use a route map and prefix list to block the desired networks, and apply the route map to BGP neighbors outbound.

C. Use an IP prefix list to block the desired networks and apply the IP prefix list to BGP neighbors outbound.

D. Use an IP prefix list to block the desired networks and apply the IP prefix list to BGP neighbors inbound.

Correct Answer: D

QUESTION 9

DRAG DROP

Drag and drop the characteristics from the left onto the YANG models they describe on the right. Not all options are used.

Select and Place:

- independent of underlying platform
- platform dependent
- standards dependent
- supports LLDP only
- supports CDP and LLDP

Cisco Native

-
-

OpenConfig

-
-

Correct Answer:

-
-
- standards dependent
-
-

Cisco Native

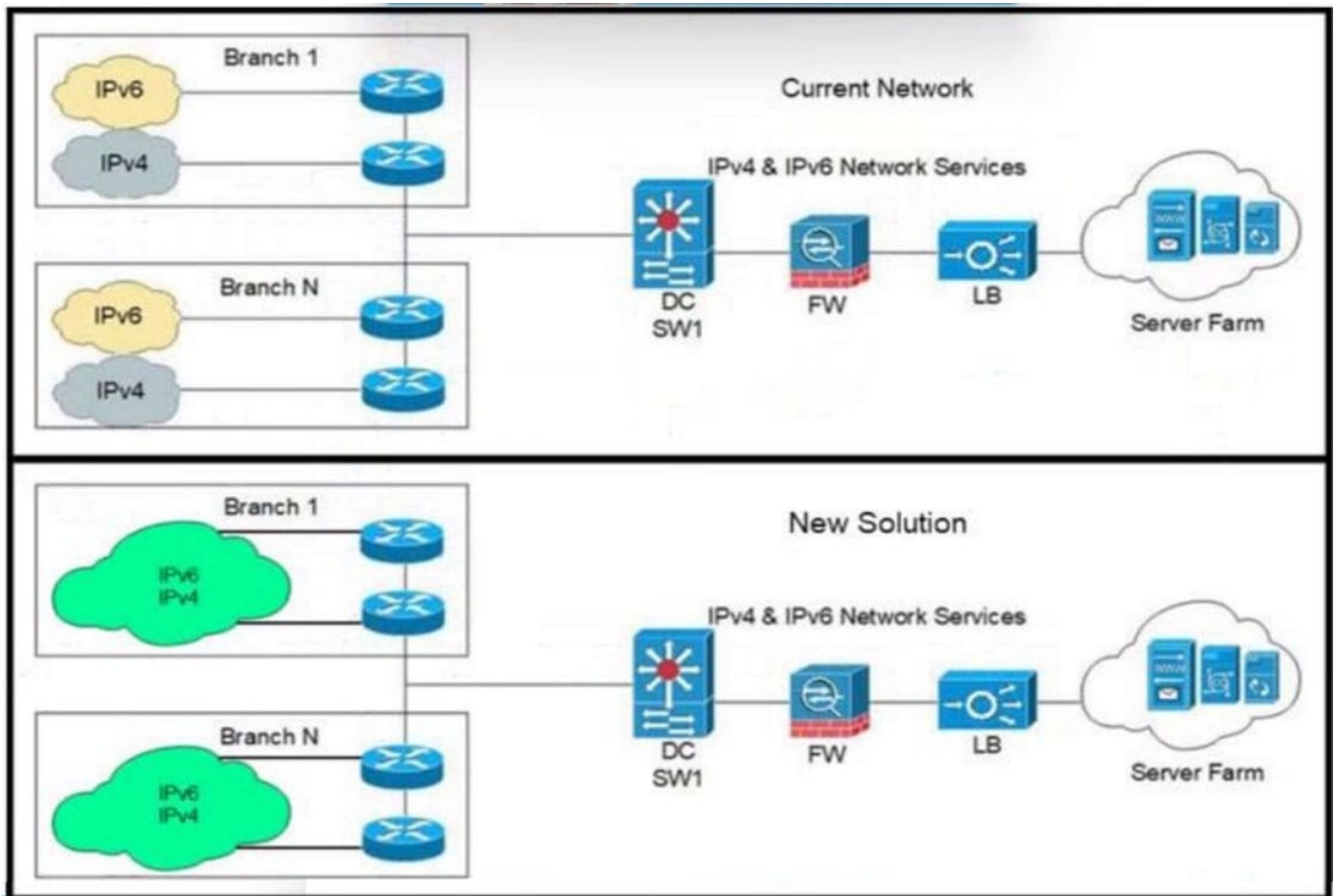
- platform dependent
- supports CDP and LLDP

OpenConfig

- independent of underlying platform
- supports LLDP only

QUESTION 10

Refer to the exhibit.



An architect is designing a network for a customer supporting a Wake-on-LAN application. Which solution must the architect choose?

- A. IP directed-broadcasts on R1
- B. spanning-tree uplinkfast on SW1
- C. spanning-tree uplinkfast on SW2
- D. IP directed-broadcasts on R2

Correct Answer: D

Explanation: "IP directed broadcast" must be supported on the last router to the destination subnet. Since the sleeping PC's dont have IP addresses, the machines must be calles awake by broadcast that behaves like an unicast untill they reach the destination network. There the directed broadcast is handled like a proper broadcast to wake all WOL machines. <https://www.cisco.com/c/en/us/support/docs/switches/catalyst-3750-series-switches/91672-cat3-wol-vlans.html>

QUESTION 11

An engineer must propose a QoS architecture model that allows an application to inform the network of its traffic profile and to request a particular type of service to support its bandwidth and delay requirements. The application requires consistent and dedicated bandwidth end to end. Which QoS architecture model meets these requirements?

- A. DiffServ
- B. LLQ
- C. WRED
- D. IntServ

Correct Answer: D

QUESTION 12

Which OSPF area blocks LSA Type 3, 4 and 5, but allows a default summary route?

- A. normal
- B. stub
- C. NSSA
- D. totally stubby

Correct Answer: D

QUESTION 13

An organization plans to deploy multicast across two different autonomous systems. Their solution must allow RPs to:

1.
discover active sources outside their domain
2.
use the underlying routing information for connectivity with other RPs
3.
announce sources joining the group

Which solution supports these requirements?

- A. SSM
- B. MSDP
- C. PIM-DM
- D. PIM-SM

Correct Answer: B

Reference: https://www.cisco.com/c/en/us/td/docs/switches/lan/catalyst9500/software/release/16-10/configuration_guide/ip_mcast_rtng/b_1610_ip_mcast_rtng_9500_cg/b_1610_ip_mcast_rtng_9500_cg_chapter_010001.pdf

QUESTION 14

In the SD-WAN underlay network, which WAN Edge VPN ID is defined as the transport VPN and is used to carry control traffic?

- A. VPN 0
- B. VPN 512
- C. VPN 128
- D. VPN 256

Correct Answer: A

QUESTION 15

How is redundancy achieved among Cisco vBond Orchestrators in a Cisco SD-WAN deployment?

- A. The IP addresses of all Orchestrators are mapped to a single DNS name.
- B. The closest Orchestrator to each Cisco WAN Edge router is selected.
- C. Cisco WAN Edge routers are configured with all Orchestrators using their IP addresses and priority.
- D. A single Cisco Orchestrator is deployed in each network.

Correct Answer: A

Reference: <https://www.cisco.com/c/dam/en/us/solutions/collateral/enterprise-networks/sd-wan/nb-06-cisco-sd-wan-ebook-cte-en.pdf> page 25

[300-420 PDF Dumps](#)

[300-420 VCE Dumps](#)

[300-420 Braindumps](#)