

## 2V0-620<sup>Q&As</sup>

vSphere 6 Foundations Beta

### Pass VMware 2V0-620 Exam with 100% Guarantee

Free Download Real Questions & Answers **PDF** and **VCE** file from:

<https://www.leads4pass.com/2v0-620.html>

100% Passing Guarantee  
100% Money Back Assurance

Following Questions and Answers are all new published by VMware  
Official Exam Center

-  **Instant Download** After Purchase
-  **100% Money Back** Guarantee
-  **365 Days** Free Update
-  **800,000+** Satisfied Customers



## QUESTION 1

vMotion can be performed between which three physical boundaries? (Choose three.)

- A. Between two vCenter Server Systems
- B. Between two vSphere Distributed Virtual Switches
- C. Between two vCenter Server Datacenter objects
- D. Between two VMware NSX Layer 4 segments
- E. Between two NFS datastores

Correct Answer: ABC

vMotion can be performed between two vCenter servers, two vSphere distributed virtual switches and between two vCenter server datacenter objects.

Reference: <https://www.vmware.com/products/vsphere/features/vmotion>

---

## QUESTION 2

Which two Fibre Channel zoning options are supported with vSphere 6.x? (Choose two.)

- A. Single-Initiator
- B. Single-Initiator-Single-Target
- C. Multiple-Initiators-Single-Target
- D. Multiple-Initiators-Multiple-Targets

Correct Answer: AB

Use single-initiator-single-target zoning when zoning ESXi hosts to Fibre Channel arrays. With this type of configuration, fabric related events that occur on one array do not impact other arrays

Reference: <https://pubs.vmware.com/vsphere-60/topic/com.vmware.ICbase/PDF/vsphere-esxi-vcenter-server-60-storage-guide.pdf>

---

## QUESTION 3

What may be a cause for failure to unmount an NFS datastore?

- A. It has active snapshot files.
- B. It is being used for High Availability (HA) heartbeat.
- C. It is part of a Cluster.

D. It is managed by Distributed Resource Scheduler (DRS).

Correct Answer: B

vSphere HA heartbeating does not prevent you from unmounting the datastore. If a datastore is used for heartbeating, unmounting it might cause the host to fail and restart any active virtual machine. If the heartbeating check fails, the vSphere Client displays a warning. Reference: [https://pubs.vmware.com/vsphere-50/index.jsp?topic=%2Fcom.vmware.vsphere.storage.doc\\_50%2FGUID-1B56EF97-F60E-4F21-82A7-8F2A7294604D.html](https://pubs.vmware.com/vsphere-50/index.jsp?topic=%2Fcom.vmware.vsphere.storage.doc_50%2FGUID-1B56EF97-F60E-4F21-82A7-8F2A7294604D.html)

---

#### QUESTION 4

What is true about resource pools created on a Distributed Resource Scheduler (DRS) cluster?

- A. A root resource pool is created with the specified values.
- B. A root resource pool is automatically created using the aggregate total of the ESXi host resources in the cluster.
- C. A root resource pool is automatically created using the aggregate total of all resources in the datacenter.
- D. A root resource pool is not needed when creating resource pools on a DRS cluster.

Correct Answer: B

A root resource pool is automatically created using the aggregate total of the ESXi host resources in the cluster. Reference: [https://www.vmware.com/pdf/vmware\\_drs\\_wp.pdf](https://www.vmware.com/pdf/vmware_drs_wp.pdf)

---

#### QUESTION 5

What is the effective vSphere licensing level during the 60 day evaluation period?

- A. vSphere Foundation Essentials Plus
- B. vSphere Standard
- C. vSphere Enterprise
- D. vSphere Enterprise Plus

Correct Answer: D

The evaluation mode provides the set of features equal to a vSphere Enterprise Plus license. Before the evaluation mode expires, you must assign to your hosts a license that supports all the features in use.

Reference: <https://pubs.vmware.com/vsphere-55/index.jsp?topic=%2Fcom.vmware.vsphere.upgrade.doc%2FGUID-17862A54-C1D4-47A9-88AA-2A1A32602BC6.html>

---

#### QUESTION 6

You are editing the management network configuration of an ESXi 6.x Host from the vSphere Web Client. You mistakenly put the incorrect VLAN in place for the management network.

What action do you need to take to correct this?

- A. You need to manually edit the configuration on the host with command line utilities.
- B. No action is required. By default ESXi rolls back configuration changes that disconnect the host.
- C. The ESXi host system configuration will need to be restored to the factory configuration to fix the issue.
- D. The change can be reverted in the vSphere Web Client by simply editing the switch again.

Correct Answer: B

Host networking rollbacks occur when an invalid change is made to the host networking configuration.

Every network change that disconnects a host also triggers a rollback.

Reference: [https://kb.vmware.com/selfservice/microsites/search.do?](https://kb.vmware.com/selfservice/microsites/search.do?language=en_US&cmd=displayKc&externalId=2032908)

[language=en\\_US&cmd=displayKc&externalId=2032908](https://kb.vmware.com/selfservice/microsites/search.do?language=en_US&cmd=displayKc&externalId=2032908)

---

#### QUESTION 7

What are three goals of resource management within a cluster? (Choose three.)

- A. To prevent virtual machines from monopolizing resources and to guarantee predictable service rates.
- B. To exploit undercommitted resources and overcommit with graceful degradation.
- C. To provide solutions to potential problems that you might encounter when using vCenter Server.
- D. To control the relative importance of virtual machines and provide flexible dynamic partitioning.
- E. To provide additional network administration capabilities.

Correct Answer: ABD

When managing your resources, you should be aware of what your goals are.

In addition to resolving resource overcommitment, resource management can help you accomplish the following:

Performance Isolation--prevent virtual machines from monopolizing resources and guarantee predictable service rates.

Efficient Utilization--exploit undercommitted resources and overcommit with graceful degradation.

Easy Administration--control the relative importance of virtual machines, provide flexible dynamic partitioning, and meet absolute service-level agreements.

Reference: <https://pubs.vmware.com/vsphere-60/topic/com.vmware.ICbase/PDF/vsphere-esxi-vcenterserver-60-resource-management-guide.pdf>

---

**QUESTION 8**

What are three valid disk configurations for the vSphere Data Protection 6.x Appliance? (Choose three.)

- A. 500GB
- B. 1TB
- C. 1.5TB
- D. 2TB
- E. 4TB

Correct Answer: ABC

VDP supports these specifications:

Each vCenter Server can support up to 10 VDP appliances.

Each VDP appliance supports backup for up to 100 virtual machines.

Only 1 VDP appliance can exist per ESXi/ESX host.

Support for 0.5 TB, 1 TB, or 2 TB of deduplicated backup data.

Reference: [https://kb.vmware.com/selfservice/microsites/search.do?language=en\\_US&cmd=displayKCa&externalId=2016565](https://kb.vmware.com/selfservice/microsites/search.do?language=en_US&cmd=displayKCa&externalId=2016565)

---

**QUESTION 9**

An administrator is installing a new network card in an ESXi 6.x host that is part of a vSphere cluster. When the host is placed into maintenance mode, the vSphere Web Client displays the progress bar at 2% for over 30 minutes.

Which two are likely reasons for this occurrence? (Choose two.)

- A. Maintenance mode is unable to migrate all virtual machines from the host.
- B. There is a large number of virtual machines that must be migrated from the host.
- C. VMware High Availability is in the process of reconfiguring the cluster.
- D. Each virtual machine on the ESXi host must be reconfigured to recognize the new adapter.

Correct Answer: AB

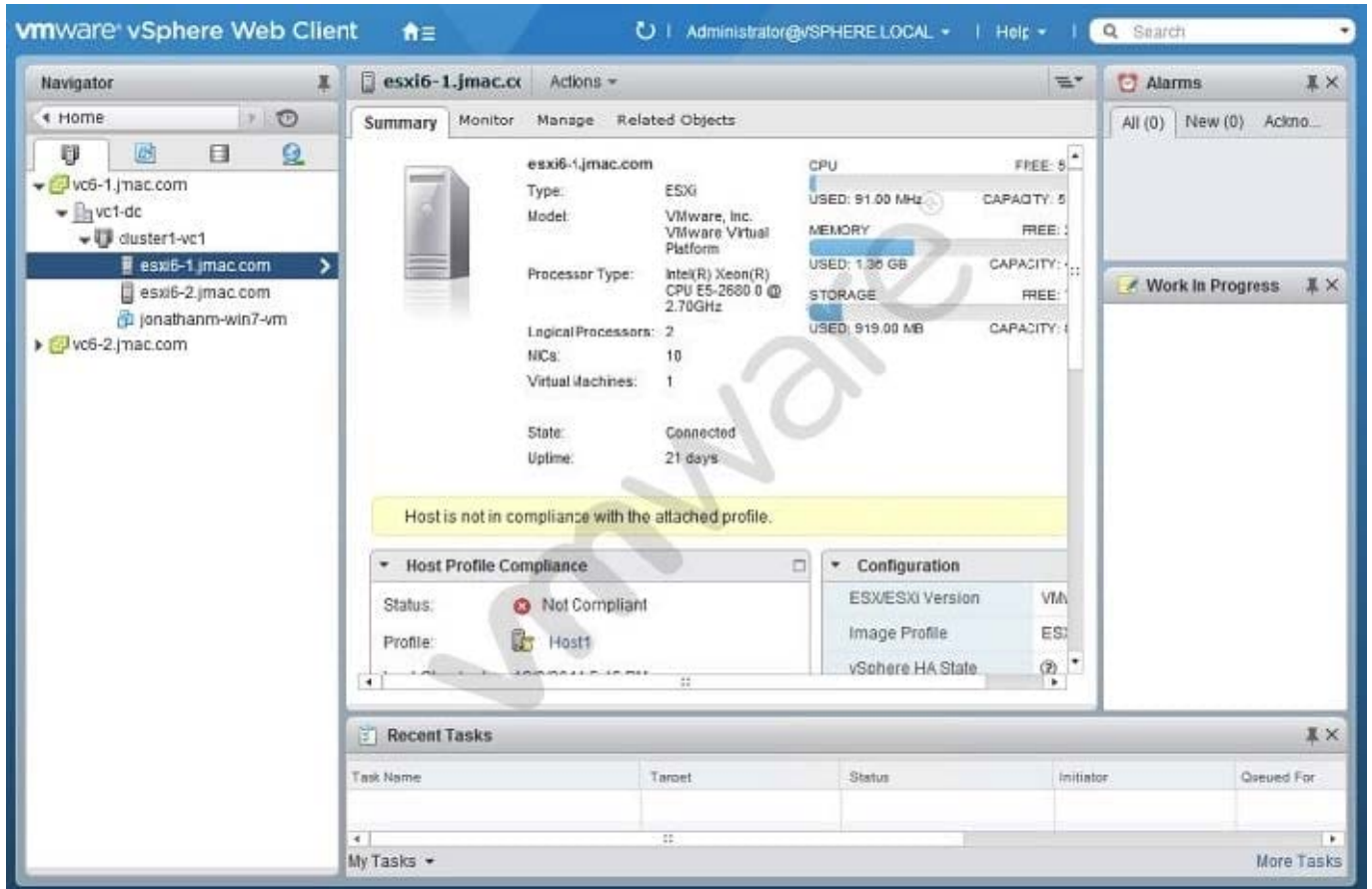
The maintenance mode is unable to migrate all virtual machines from the host. There is a large number of VM s that must be migrated first.

Reference: [https://kb.vmware.com/selfservice/microsites/search.do?language=en\\_US&cmd=displayKCa&externalId=1005241](https://kb.vmware.com/selfservice/microsites/search.do?language=en_US&cmd=displayKCa&externalId=1005241)

---

**QUESTION 10**

Refer to the Exhibit.



An administrator logs into the vSphere Web Client and sees the warning shown in the Exhibit. During a change control window, the warning was addressed.

What should be done to verify that the host is no longer showing the warning?

- A. Run a Remediate host operation.
- B. Recheck the compliance of the host.
- C. Restart the host to get rid of the warning.
- D. Install VMware tools to clear the warning.

Correct Answer: B

To make sure the host is no longer showing the warning, recheck the compliance of the host.

**QUESTION 11**

When is it possible to place a VMFS5 datastore in maintenance mode?

- A. When it is a member of a Storage DRS cluster
- B. When it is a member of Virtual SAN cluster
- C. When it is a member of a multi-extent datastore
- D. When it is a member of a Virtual Volume

Correct Answer: A

Storage DRS introduced the feature Datastore Maintenance mode and this new feature can be compared to Host Maintenance Mode. When a datastore is placed in Maintenance Mode all registered virtual machines on that datastore, are migrated to the other datastores in the datastore cluster. Datastore maintenance mode can be used to safely migrate virtual machines out of the datastore for storage array related maintenance operations such as migrating a LUN to another RAID group, however it is also an excellent feature that can help you during a storage migration project migrating virtual machines from standalone VMFS3 datastores to VMFS5 datastores aggregated in a Storage DRS datastore cluster.

Reference: <https://blogs.vmware.com/vsphere/2012/04/using-datastore-maintenance-mode-for-migrationvirtual-machines-to-datastore-clusters.html>

---

## QUESTION 12

An administrator is tasked with setting up an iSCSI solution on an ESXI 6.x host. To provide multiple paths to the iSCSI array, the administrator chooses to setup iSCSI Port Binding.

Which three statements are true in regard to setting up iSCSI Port Binding? (Choose three.)

- A. Port binding works across multiple routers as long as the network mask is the same.
- B. iSCSI target array ports must reside in the same broadcast domain as the VMkernel adapters.
- C. iSCSI VMkernel adapters must be on different virtual switches.
- D. All VMkernel adapters used for iSCSI connectivity must reside in the same virtual switch.
- E. Port binding cannot be used in conjunction with network routing.

Correct Answer: BDE

Port binding is used in iSCSI when multiple VMkernel ports for iSCSI reside in the same broadcast domain and IP subnet to allow multiple paths to an iSCSI array that broadcasts a single IP address. When using port binding, you must remember that:

Array Target iSCSI ports must reside in the same broadcast domain and IP subnet as the VMkernel port.

All VMkernel ports used for iSCSI connectivity must reside in the same broadcast domain and IP subnet.

All VMkernel ports used for iSCSI connectivity must reside in the same vSwitch.

Currently, port binding does not support network routing.

Reference: <https://kb.vmware.com/s/article/2038869>

## QUESTION 13

A mission-critical virtual machine built on vSphere 4.1 needs to be moved to an ESXi 6.x host.

Which virtual hardware version is needed to move the virtual machine without upgrading?

- A. 6
- B. 7
- C. 10
- D. 11

Correct Answer: B

You need version 7 to upgrade a VM on vSphere 4.1 to ESXi 6.x host Reference:

[https://kb.vmware.com/selfservice/microsites/search.do?language=en\\_US&cmd=displayKc&externalId=1003746](https://kb.vmware.com/selfservice/microsites/search.do?language=en_US&cmd=displayKc&externalId=1003746)

---

## QUESTION 14

An administrator has recently installed a new ESXi 6.x Host, and during the configuration notices sporadic network problems. To check whether the issue occurred sometime during the configuration, the administrator would like to reset the system.

How can this be accomplished in the shortest amount of time?

- A. Run the ESXi installer again and reinstall the host.
- B. Select the Reset System Configuration option from the vSphere Client when connected directly to the host.
- C. From the Direct Console User Interface, select Reset System Configuration.
- D. Use a host profile to reset the configuration to a default state.

Correct Answer: C

This DCUI interface offers the following: Configure Root password Configure Lockdown mode Configure Management network Restart Management Network Test or disable Management Configure Keyboard View Support Information View System Logs Restart Management Network Reset System Configuration Remove Custom Extensions Shutdown or Restart /Reboot the ESXi Server

Reference: <http://www.virtualizationadmin.com/articles-tutorials/vmware-esx-and-vsphere-articles/installation-and-deployment/understanding-vmware-esxi-direct-console-user-interface-dcui.html>

---

## QUESTION 15

A vApp template recently added to a Content Library is not displayed.

Which two actions could correct this problem? (Choose two.)



- A. Manually synchronize the library
- B. Select the Download all library content immediately option
- C. Select the Sync subscribed library option
- D. Manually download the vApp template

Correct Answer: AB

If the vApp template is not displayed in the content library, select the download all library content immediately option and manually synchronize the library.

Reference: [https://pubs.vmware.com/vsphere-60/index.jsp?topic=%2Fcom.vmware.vsphere.vm\\_admin.doc%2FGUID-F7BF0E6B-7C4F-4E46-8BBF-76229AEA7220.html](https://pubs.vmware.com/vsphere-60/index.jsp?topic=%2Fcom.vmware.vsphere.vm_admin.doc%2FGUID-F7BF0E6B-7C4F-4E46-8BBF-76229AEA7220.html)

[2V0-620 PDF Dumps](#)

[2V0-620 VCE Dumps](#)

[2V0-620 Study Guide](#)