

2V0-602^{Q&As}

VMware vSphere 6.5 Foundations

Pass VMware 2V0-602 Exam with 100% Guarantee

Free Download Real Questions & Answers **PDF** and **VCE** file from:

<https://www.leads4pass.com/2v0-602.html>

100% Passing Guarantee
100% Money Back Assurance

Following Questions and Answers are all new published by VMware
Official Exam Center

- ⚙ **Instant Download** After Purchase
- ⚙ **100% Money Back** Guarantee
- ⚙ **365 Days** Free Update
- ⚙ **800,000+** Satisfied Customers



QUESTION 1

Which Distributed Switch Load Balancing option requires configuration of the physical Ethernet switch to operate properly?

- A. Route based on originating virtual port
- B. Use explicit failover
- C. Route based on IP hash
- D. Route based on physical NIC load
- E. Route based on source MAC hash

Correct Answer: C

QUESTION 2

Which two events happen when Distributed Resource Scheduler (DRS) is disabled? (Choose two.)

- A. The cluster's resource pool hierarchy and affinity rules are re-established when DRS is turned back on.
- B. The cluster's resource pool hierarchy and affinity rules are not re-established when DRS is turned back on.
- C. The cluster's resource pools are removed from the cluster.
- D. The cluster's resource pools are removed from the cluster and assigned to the hosts.

Correct Answer: BC

QUESTION 3

What condition would prevent an administrator from creating a new VMFS3 datastore on an ESXi 6.x host using the vSphere Web Client?

- A. A VMFS3 datastore cannot be created on an ESXi 6.x host.
- B. The VMFS3 kernel module is not loaded.
- C. A VMFS3 datastore cannot be mounted on an ESXi 6.x host.
- D. VMFS3 datastores are not compatible with virtual machines created on an ESXi 6.x host.

Correct Answer: A

QUESTION 4

An attempt to enable vSphere Fault Tolerance for a powered-on virtual machine fails. Which two scenarios would result

in this failure? (Choose two.)

- A. The virtual machine has three vCPUs configured.
- B. The host on which the virtual machine is running has insufficient memory resources.
- C. The virtual machine has insufficient resources to accommodate full reservation plus the overhead memory.
- D. VMware High Availability is enabled on the cluster of which this host is a member.

Correct Answer: BC

QUESTION 5

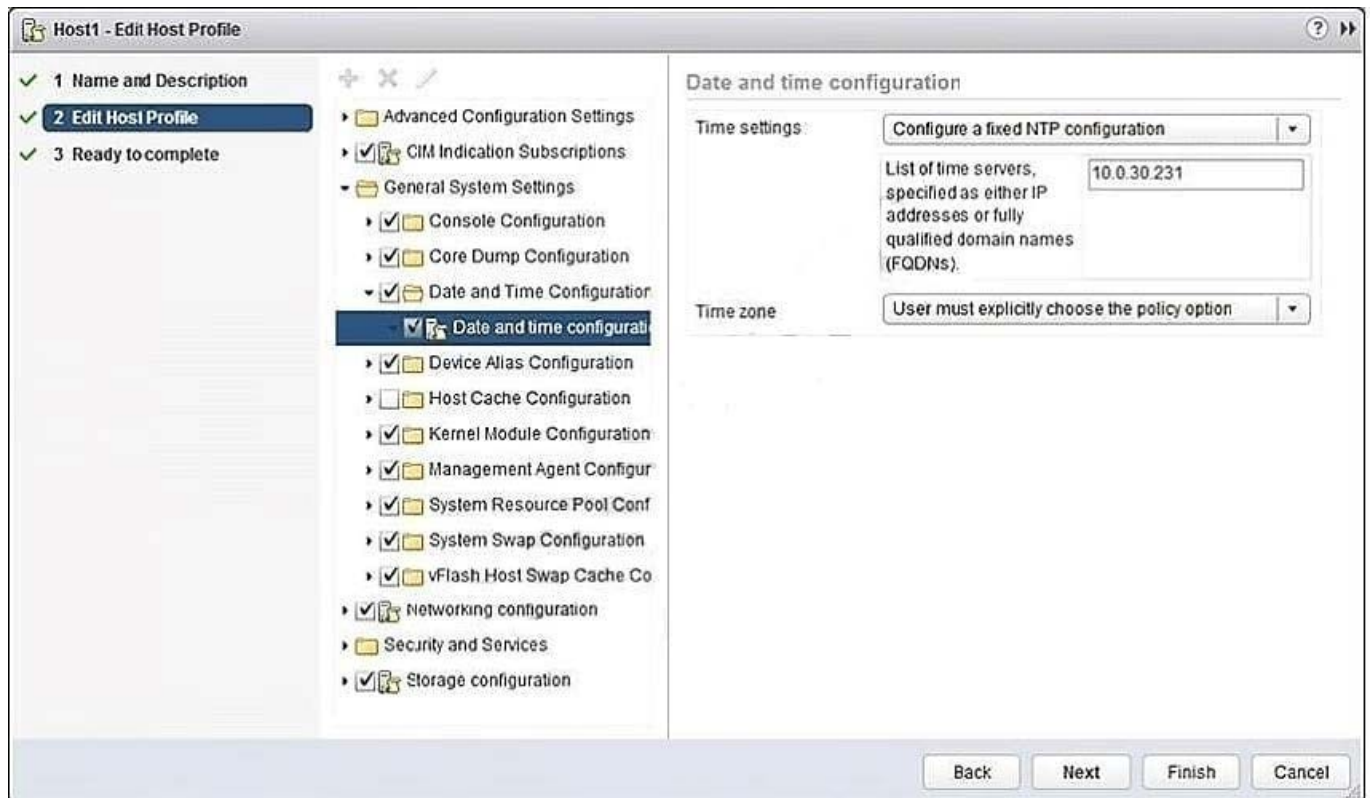
What three steps are necessary to enable Jumbo Frames for use with an iSCSI storage array? (Choose three.)

- A. Configure the MTU on the physical switch.
- B. Configure the MTU on the virtual switch.
- C. Configure the MTU on the VTEP.
- D. Configure the MTU on the LAG group.
- E. Configure the MTU on the VMKernel port.

Correct Answer: ABE

QUESTION 6

Refer to the Exhibit. An administrator has configured a host profile so that ESXi 6.x hosts will point to the corporate NTP server for time synchronization. The NTP server is located at 10.0.30.213, but time has not been synchronized properly across the ESXi hosts.



The administrator reviews Host Profile settings as shown in the Exhibit. Which two steps are required to resolve the issue? (Choose two.)

- A. Correct the NTP server IP address.
- B. Check the host for host profile compliance.
- C. Remediate the host based on the updated host profile.
- D. Change the NTP server to the FQDN as IP Addresses are not supported.

Correct Answer: AC

QUESTION 7

A vSphere Administrator wants to migrate a virtual machine from a host with an AMD Opteron CPU to an intel Xeon CPU.

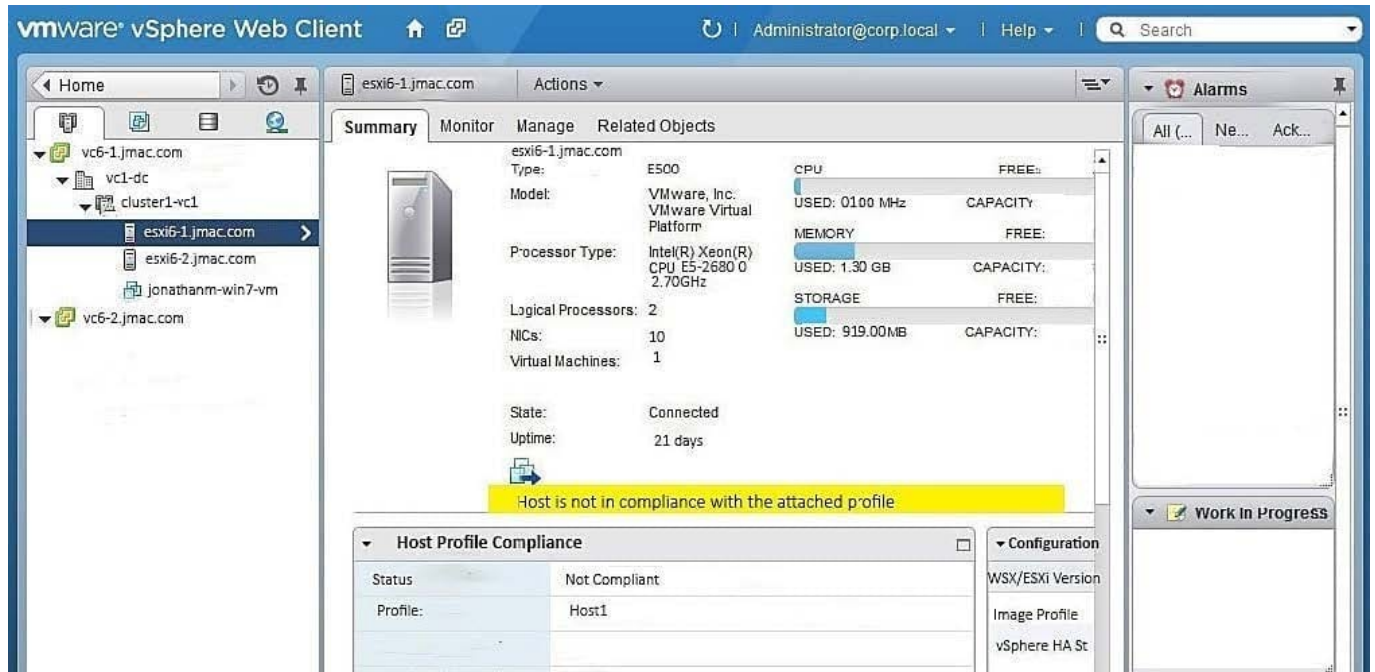
Which method should be used?

- A. Storage vMotion
- B. vMotion
- C. Cold Migration
- D. Hot Migration

Correct Answer: C

QUESTION 8

Refer to the Exhibit. An administrator logs into the vSphere Web Client and sees the warning shown in the Exhibit.



During a change control window, the warning was addressed. What should be done to verify that the host is no longer showing the warning?

- A. Run a Remediate host operation.
- B. Recheck the compliance of the host.
- C. Restart the host to get rid of the warning.
- D. Install VMware tools to clear the warning.

Correct Answer: B

QUESTION 9

A vSphere Administrator sees the alarm:

vSphere HA virtual machine failed to failover

This occurred for a number of virtual machines on a particular ESXi host in a cluster with vSphere High Availability (HA) enabled. The virtual machines guest operating systems never reported a power event.

What happened?

- A. The virtual machines were vMotioned off of the ESXi host.
- B. The ESXi host is still running but has disconnected from the network.
- C. The ESXi host failed and vSphere HA successfully failed over the virtual machines.
- D. The previous virtual machine cloning operations failed to complete.

Correct Answer: C

QUESTION 10

In a vSphere environment, a VM is configured as follows: What is the default size of the VM swap file once the VM is powered on?

```
1 vCPU
4 GB RAM
10 GB HDD1
```

- A. 1 GB
- B. 128 MB
- C. 4 GB
- D. 2 GB

Correct Answer: C

QUESTION 11

By using vSphere Standard Switch, what is the maximum number of port groups allowed per host?

- A. 1000
- B. 2000
- C. 1024
- D. 900
- E. 512

Correct Answer: E

QUESTION 12

Which scenario shows a reason for VMware Tools failing to install?

- A. Virtual machine has a CD-ROM configured.
- B. Guest OS Antivirus is blocking the VMware Tools installation.
- C. Guest OS has 64-bit ldd (list dynamic dependencies) utility installed.
- D. Virtual machine is powered on.

Correct Answer: B

QUESTION 13

An administrator has unsuccessfully attempted several times to install an Operating System inside a virtual machine. The administrator finds that the installation fails at random intervals. Which two actions can be taken to resolve this issue? (Choose two.)

- A. Verify the md5sum and if invalid, download the installation files again.
- B. Attempt the installation an additional time.
- C. Attempt to use a different installation media or installation method.
- D. Create a new virtual machine and attempt the installation with the existing media;

Correct Answer: AC

QUESTION 14

Which two networking connection types can be configured on a virtual switch? (Choose two.)

- A. Virtual machine portgroups
- B. VMkernel services (such as NFS, iSCSI, or vMotion) to the physical network
- C. Web services over the Management Network
- D. NFS and FCoE storage services

Correct Answer: AB

QUESTION 15

An administrator is attempting to migrate a large Hadoop virtual machine using vMotion. The administrator notices a delay when the machine is quiesced. The Hadoop virtual machine is processing many transactions a second to an in-memory database. Which two actions would help reduce the amount of time needed to perform a vMotion on this virtual machine? (Choose two.)

- A. Use multiple NICs for the vMotion vmkernel port.
- B. Use a 10Gbps Network card for the vMotion vmkernel port.
- C. Add an additional management network to help transmit the data quicker.

D. Disable Fault Tolerance before performing the vMotion.

Correct Answer: AB

[2V0-602 VCE Dumps](#)

[2V0-602 Study Guide](#)

[2V0-602 Exam Questions](#)